



# 5TH WHEEL HITCHES

Scan  
for more  
information



CURT offers a full line of 5th wheel products including rollers and hitches in 16K, 20K and 24K capacities. CURT's flagship Q-Series 5th wheel hitch is the quietest on the market. Dual jaws wrap around the trailer's king pin to eliminate clanking. Various rubber inserts in the hitch body also dampen noise.

The Q-series hitch head is mounted to the hitch body using a bearing, allowing the head to move in all directions rather than in only four directions like a standard 5th wheel hitch. The result of this additional movement is further reduced noise and easier coupling. To ensure hassle-free coupling, the Q-series hitch features an extra wide head opening and a coupling indicator that is visible from inside the truck cab.



**24K**  
GTW

## Q24 5TH WHEEL



16245

- 24,000 lbs. towing capacity
- Spherical axial bearing ensures smooth, quiet towing
- Dual jaws provide 360° pin contact
- Coupling indicators visible from vehicle cab
- Self-aligning head
- Short throw, single handle operation
- Lockable
- Mounts to industry standard rails
- Three grease fittings for easy lubrication
- Includes polyethylene lube plate
- Meets or exceeds current and proposed industry standards
- Durable carbide powder coat finish
- For replacement parts, visit [curtmfg.com](http://curtmfg.com)
- Install kits available on page 150
- **Ten year warranty**

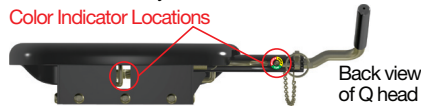
Pkg#	Description	Capacity	Height
16245	Q24 5th wheel	24,000 lbs.	13" - 17"
16246	Q24 5th wheel with base rails (16200)	24,000 lbs.	13" - 17"
16545	Q24 5th wheel head unit (for use with the 16570 R24 roller)	24,000 lbs.	--
16546	Q24 5th wheel (16545) with R24 roller (16570)	24,000 lbs.	17 1/2" - 21 1/2"
16646	Q24 5th wheel (16545) with R24 roller (16570) and base rails (16200)	24,000 lbs.	17 1/2" - 21 1/2"



### THREE POINT INDICATOR SYSTEM

Visible from inside your truck.

Color Indicator Locations



Back view of Q head



#### RED • UNCOUPLE

Jaws locked open. Indicates it is safe to pull your truck away from the trailer. *Do not couple!*



#### YELLOW • COUPLER

Jaws ready to Couple. Indicates it is safe to back your truck in for coupling to your trailer.

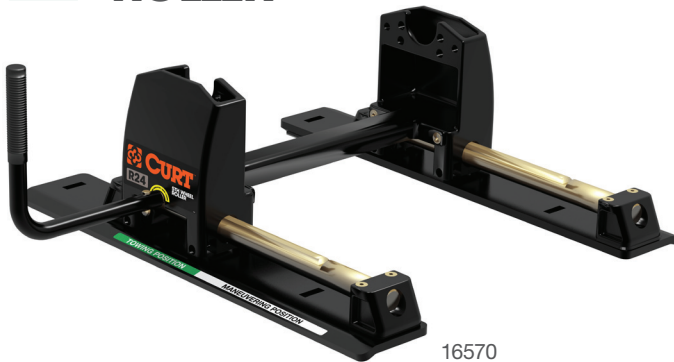


#### GREEN • TOW

Jaws locked closed. Two locations that indicate it is safe to tow your trailer. (Visibly inspect hitch to make sure proper coupling has been engaged)

**24K**  
GTW

## R24 ROLLER



16570

- 24,000 lbs. towing capacity
- 12" travel
- Non-binding rods
- True rolling unit - not just a slider
- Mounts to industry standard rails
- Meets or exceeds current and proposed industry standards
- Durable carbide powder coat finish
- **Ten year warranty**

Pkg#	Capacity	Description
16570	24,000 lbs.	R24 5th wheel roller

**20K**  
GTW

# Q20 5TH WHEEL



16130

- 20,000 lbs. towing capacity
- Spherical axial bearing ensures smooth, quiet towing
- Dual jaws provide 360° pin contact
- Coupling indicators visible from vehicle cab
- Self-aligning head
- Short throw, single handle operation
- Lockable
- Mounts to industry standard rails
- Includes polyethylene lube plate
- Three grease fittings for easy lubrication
- Meets or exceeds current and proposed industry standards
- Durable carbide powder coat finish
- For replacement parts, visit [curtmfg.com](http://curtmfg.com)
- Install kits available on page 150
- **Ten year warranty**

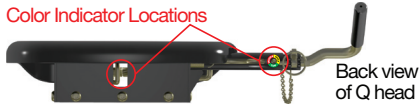
Pkg#	Description	Capacity	Height
16130	Q20 5th wheel	20,000 lbs.	13" - 17"
16131	Q20 5th wheel with base rails (16200)	20,000 lbs.	13" - 17"
16530	Q20 5th wheel head unit (for use with the 16550 R20 roller)	20,000 lbs.	--
16536	Q20 5th wheel (16530) with R20 roller (16550)	20,000 lbs.	17 1/2" - 21 1/2"
16636	Q20 5th wheel (16530) with R20 roller (16550) and base rails (16200)	20,000 lbs.	17 1/2" - 21 1/2"



### THREE POINT INDICATOR SYSTEM

Visible from inside your truck.

Color Indicator Locations



Back view of Q head



#### RED • UNCOUPLE

Jaws locked open. Indicates it is safe to pull your truck away from the trailer. *Do not couple!*



#### YELLOW • COUPLE

Jaws ready to Couple. Indicates it is safe to back your truck in for coupling to your trailer.



#### GREEN • TOW

Jaws locked closed. Two locations that indicate it is safe to tow your trailer. (Visibly inspect hitch to make sure proper coupling has been engaged)

**20K**  
GTW

# R20 ROLLER



16550

- 20,000 lbs. towing capacity
- 12" travel
- Non-binding rods
- True rolling unit - not just a slider
- Mounts to industry standard rails
- Meets or exceeds current and proposed industry standards
- Durable carbide powder coat finish
- **Ten year warranty**

Pkg#	Capacity	Description
16550	20,000 lbs.	R20 5th wheel roller

**16K**  
GTW

## E16 5TH WHEEL



16115

- 16,000 lbs. towing capacity
- Single handle operation
- Auto locking mechanism
- Dual pivot head
- Four position height adjustment
- 10° lateral movement
- Anti-rattle skid plate
- Mounts to industry standard rails
- Meets or exceeds current and proposed industry standards
- Durable carbide powder coat finish
- For replacement parts, visit [curtmfg.com](http://curtmfg.com)
- Install kits available on page 150
- **Five year warranty**

Pkg#	Description	Capacity	Height
16115	E16 5th wheel	16,000 lbs.	13" - 17"
16116	E16 5th wheel with base rails (16200)	16,000 lbs.	13" - 17"
16515	E16 5th wheel head unit (for use with the 16560 R16 roller)	16,000 lbs.	--
16516	E16 5th wheel (16515) with R16 roller (16560)	16,000 lbs.	14" - 17"
16616	E16 5th wheel (16515) with R16 roller (16560) and base rails (16200)	16,000 lbs.	14" - 17"

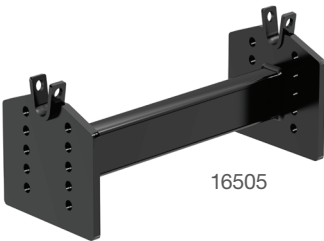
**16K**  
GTW

## R16 ROLLER



16560

- 16,000 lbs. towing capacity
- 12" travel
- Non-binding rods
- True rolling unit - not just a slider
- Mounts to industry standard rails
- Meets or exceeds current and proposed industry standards
- Durable carbide powder coat finish
- **Five year warranty**

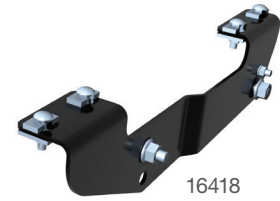
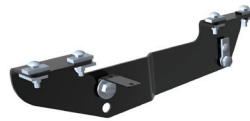


16505

Pkg#	Capacity	Description
16560	16,000 lbs.	R16 5th wheel roller
16505	--	Adapts the 16115 or 16116 head to CURT rollers. (Included in 16515, 16516, and 16616 kits.)

# CUSTOM 5TH WHEEL BRACKET KITS

- Cuts install time by up to half
- Reduces or eliminates drilling
- To be used in combination with 16104/16204 rails
- Rail mounting hardware included
- No need for universal brackets and hardware



Make/Model	Style	Years	Bracket Kit#	Notes	Base Rails Needed	
					Carbide	Black
<b>CHEVROLET/GMC</b>						
1500/2500LD Silverado/Sierra	New Body Only	07-11	16412	⊗	16204	16104
	Classic Body Only	99-07	16418	Drill	16204	16104
2500HD/3500 Silverado/Sierra	New & Classic Body	2011	16413	⊗	16204	16104
		01-10	16418	Drill	16204	16104
<b>DODGE</b>						
Ram 1500	Including Mega & Crew Cabs	09-10	16422	Drill	16204	16104
	Except Mega & Crew Cabs	2009	16421*	Drill	16204	16104
	6' & 8' Beds, Including Mega Cab	06-08	16420	⊗	16204	16104
	All, except Mega Cab	02-08	16419	⊗	16204	16104
Ram 2500 & 3500	6' & 8' Beds, Including Mega Cab & 3500 4x4 w/ Overload Springs	03-12	16420	⊗	16204	16104
<b>FORD</b>						
F-150 & F-250 Limited Duty	6' 5" & 8' Beds Only	04-11	16441	⊗	16204	16104
	All	97-03	16437	⊗	16204	16104
F-150 Heritage Edition	Heritage Edition Only	2004	16437	⊗	16204	16104
F-250 & F-350 Super Duty	All	05-12	16448	Drill	16204	16104
		99-04	16443	Drill	16204	16104
F-450 Super Duty	All, Except Cab & Chassis	08-12	16448	Drill	16204	16104
<b>NISSAN</b>						
Titan	All, Including King & Crew Cabs	04-11	16470	Drill	16204	16104
<b>TOYOTA</b>						
Tundra	6' 5" Bed Only. Will not fit Crew Max	07-11	16468	Drill	16204	16104
	Standard Cab, Long Box Only	00-06	16465	⊗	16204	16104

\* Continued while supplies last

# SEMI-CUSTOM 5TH WHEEL BRACKET KITS

- Required for these vehicles if not using the custom bracket kits shown above
- To be used in combination with universal brackets on page 151
- 16300 & 16305 do not require universal brackets



Make/Model	Style	Years	Bracket Kit#	Notes	Base Rails Needed	
					Carbide	Black
<b>DODGE</b>						
Ram 1500	Including Mega Cab	09-11	16305*	Drill	16204	16104
	With or Without Overload Springs	02-08	16303	Drill	16200	16100
Ram 2500 & 3500	With or Without Overload Springs	03-11	16301	Drill	16200	16100
<b>FORD</b>						
F-150	All, Except Heritage Edition	04-11	16300*	Drill	16204	16104
<b>TOYOTA</b>						
Tundra	6'5" & 8' Beds. Will not fit Crew Max	07-08	16304	Drill	16200	16100
	Standard Cab, Long Box Only	00-06	16302	Drill	16200	16100



16302



16303

16304



16301

\* Use with 16104/16204 rails, universal brackets not required

# UNIVERSAL 5TH WHEEL BASE RAILS

- Can be used with all CURT and competitive 5th wheels, rollers, bent plate goosenecks, and Spyder goosenecks
- Some vehicles require semi-custom brackets, see page 150



Gloss#	Carbide#	Zinc #	Multi-Pack#	Description
16100	16200	--	--	Two 5th wheel base rails (with 18101 universal brackets)
16104	16204	--	--	Two 5th wheel base rails only (without 18101 universal brackets)
16101	--	--	--	Universal installation brackets and hardware
--	--	16103	16103010	Replacement rail bolts, needed when reinstalling used rails; 16103 contains 8 bolts, 16103010 contains 10 sets of 8 bolts

## 20K GTW X5 5TH WHEEL ADAPTER PLATE

- Adapts Double Lock goosenecks to 5th wheel rails
- For use with CURT & competitive 5th wheels up to 20,000 lbs.



Bulk#	Ball Style
16210	Round shank (for CURT Double Lock goosenecks)
16310	Square shank (competitive products)



## 25K GTW 5TH WHEEL RAIL SPYDER GOOSENECK

- Includes 2 5/16" welded ball, chain hook-ups, & pins & clips
- Four pin install and removal for access to truck bed
- Mounts to all industry standard 5th wheel rails



Pkg#	GTW	Finish
16085	25,000 lbs.	Carbide powder coat

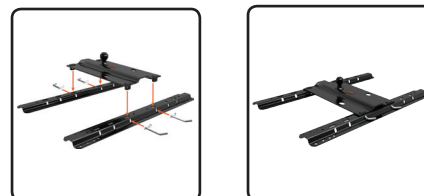


## 25K GTW 5TH WHEEL RAIL BENT PLATE GOOSENECK

- Four pin install and removal for access to truck bed
- Welded 2 5/16" trailer ball with 3" offset
- Mounts to all industry standard 5th wheel rails
- Pins & clips included



Pkg#	GTW	Finish
16055	25,000 lbs.	Carbide powder coat



# 5TH WHEEL LUBE PLATE

- Eliminates messy grease deposits
- Reduces normal wear & tear when towing

Bulk#	25-Pack Tray#	Description
16721	16721025	10" 5th wheel lube plate



16721



16721025



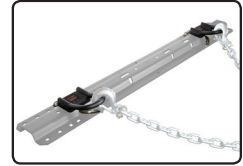
# 5TH WHEEL SAFETY CHAIN LOOPS

- Pins into 5th wheel rails

Pkg#	Description
16000	Safety chain loops with pins and clips



16000



# SOUND DAMPENING PADS

- Place between rails and 5th wheel to eliminate rattling

Bulk#	Pkg#	Description
16900	16901	5th wheel dampening pad kit



16900



16901

# BRAKE CONTROLS

- See pages 184-185 for full listing



51110



51120



51130

MADE IN THE USA



51140

## CURT BRAKE CONTROLS QUICK REFERENCE

Pkg#	Bulk# (6-pack)	Axles				Activation	Display	Mount Angles	Level Adjust	Warranty
		1	2	3	4					
51110 Venture	--	X	X	X		Time	LED	Any	Auto	Limited lifetime
51120 Discovery	51122	X	X	X	X	Time	Digital	Any	Auto	Limited lifetime
51130 Reflex	51132	X	X	X	X	Inertia accelerometer	Digital	Various	Auto	Limited lifetime
51140 TriFlex	51142	X	X	X	X	Inertia accelerometer	Digital	Various	Auto	Limited lifetime

# 5TH WHEEL/GOOSE OEM EXTENSION

- Routes a 7-way RV blade socket into truck bed while retaining use of 7-way RV blade at rear of vehicle
- Plug (T's) into existing OEM harness

7 Foot Pkg#	10 Foot Pkg#	Make/Model	Years
56070	56000	<b>CHEVROLET/GMC</b>	
		Silverado/Sierra, classic & new body	99-11
		<b>DODGE</b>	
		Ram 1500	09-11
		Ram 2500/3500	10-11
		<b>FORD</b>	
		F-150 & F-250 Light Duty	97-03
		F-150, new body, including Heritage Edition	04-10
		F-250/F-350 Super Duty	99-10
		F-450/F-550 Super Duty	99-10
56071	56001	<b>DODGE</b>	
		Dakota	95-10
		Ram 1500	95-08
		Ram 2500/3500	95-09



56000



56001



56000  
Packaged



56001  
Packaged

# 5TH WHEEL/GOOSE UNIVERSAL EXTENSION

- Universal 7-way extension
- Fits any 7-way RV blade socket
- Seven foot length



56080

Pkg#	Description
56080	Routes existing 7-way plug at rear of vehicle into truck bed

# TOWING LIGHTS

- 20 foot cord with 4-way flat plug allows for plug-and-go convenience
- Non-scratch magnetic base
- Patent# D355,270

Pkg#	Description
53200	Auxiliary magnetic towing lights
53204	Auxiliary magnetic towing light kit (includes heavy duty storage case)



53204