



# 5TH WHEEL HITCHES

CURT offers a full line of 5th wheel products, including rollers and hitches in 16K, 20K and 24K capacities. CURT's flagship Q-Series 5th wheel hitch is the quietest on the market. Our dual jaws wrap around the trailer's king pin to eliminate clanking, and numerous rubber inserts in the hitch body also dampen noise.

The Q-Series hitch head is mounted to the hitch body using a spherical bearing, allowing the head to move in all directions, rather than in only four directions like a standard 5th wheel hitch. The results of this additional movement are further reduced noise and easier coupling. To ensure hassle-free coupling, the Q-Series hitch features an extra wide head opening and a coupling indicator that is visible from inside the truck cab.



Scan for live  
mobile version



**24K**  
GTW

# Q24 5TH WHEEL



16245

- 24,000 lbs. towing capacity
- Spherical axial bearing ensures smooth, quiet towing and allows for unimpeded head movement
- Dual jaws provide 360° pin contact
- Coupling indicators visible from vehicle cab
- Self-aligning head
- Short throw, single handle operation
- Wide head opening creates easier coupling
- Lockable
- Mounts to industry standard rails
- Three grease fittings for easy lubrication
- Includes polyethylene lube plate
- Meets or exceeds current and proposed industry standards
- Durable carbide powder coat finish
- For replacement parts, visit [curtmfg.com](http://curtmfg.com)
- Installation kits available on page 178
- **Ten year warranty**

Pkg#	Description	Capacity	Height
16245	Q24 5th wheel	24,000 lbs.	13" - 17"
16246	Q24 5th wheel with base rails (16200)	24,000 lbs.	13" - 17"
16545	Q24 5th wheel head unit (for use with the 16570 R24 roller)	24,000 lbs.	--
16546	Q24 5th wheel (16545) with R24 roller (16570)	24,000 lbs.	17 1/2" - 21 1/2"
16646	Q24 5th wheel (16545) with R24 roller (16570) and base rails (16200)	24,000 lbs.	17 1/2" - 21 1/2"

### THREE POINT INDICATOR SYSTEM



Visible from inside your truck

Color Indicator Locations



Back view of Q head



**UNCOUPLE**

Jaws locked open. Indicates it is safe to pull your truck away from the trailer. *Do not couple!*



**COUPLE**

Jaws ready to Couple. Indicates it is safe to back your truck in for coupling to your trailer.

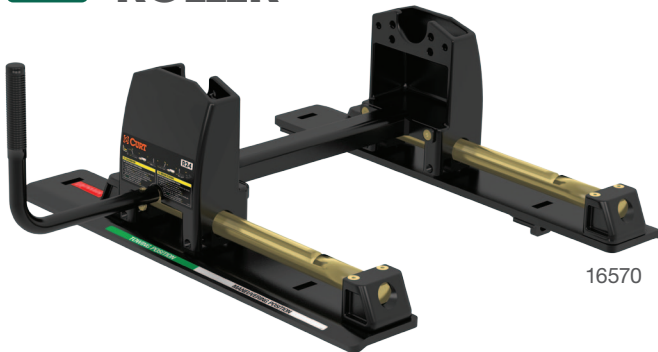


**TOW**

Jaws locked closed. Two locations that indicate it is safe to tow your trailer. (Visibly inspect hitch to make sure proper coupling has been engaged)

**24K**  
GTW

# R24 ROLLER



16570

- 24,000 lbs. towing capacity
- Non-binding rods
- True rolling unit - not just a slider
- 12" travel - most competitive models only offer 10"
- Wheels bear the weight, not the rods - Many competitive models rely on hollow rods to bear the weight
- Mounts to industry standard rails
- Meets or exceeds current and proposed industry standards
- Durable carbide powder coat finish
- **Five year warranty**

Pkg#	Capacity	Description
16570	24,000 lbs.	R24 5th wheel roller

**20K**  
GTW

# Q20 5TH WHEEL

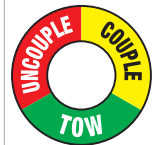


16130

- 20,000 lbs. towing capacity
- Spherical axial bearing ensures smooth, quiet towing and allows for unimpeded head movement
- Dual jaws provide 360° pin contact
- Coupling indicators visible from vehicle cab
- Self-aligning head
- Short throw, single handle operation
- Wide head opening creates easier coupling
- Lockable
- Mounts to industry standard rails
- Three grease fittings for easy lubrication
- Includes polyethylene lube plate
- Meets or exceeds current and proposed industry standards
- Durable carbide powder coat finish
- For replacement parts, visit [curtmfg.com](http://curtmfg.com)
- Installation kits available on page 178
- **Ten year warranty**

Pkg#	Description	Capacity	Height
16130	Q20 5th wheel	20,000 lbs.	13" - 17"
16131	Q20 5th wheel with base rails (16200)	20,000 lbs.	13" - 17"
16530	Q20 5th wheel head unit (for use with the 16550 R20 roller)	20,000 lbs.	--
16536	Q20 5th wheel (16530) with R20 roller (16550)	20,000 lbs.	17 1/2" - 21 1/2"
16636	Q20 5th wheel (16530) with R20 roller (16550) and base rails (16200)	20,000 lbs.	17 1/2" - 21 1/2"

## THREE POINT INDICATOR SYSTEM



Visible from inside your truck

Color Indicator Locations



**UNCOUPLE**

Jaws locked open. Indicates it is safe to pull your truck away from the trailer. *Do not couple!*



**COUPLE**

Jaws ready to Couple. Indicates it is safe to back your truck in for coupling to your trailer.



**TOW**

Jaws locked closed. Two locations that indicate it is safe to tow your trailer. (Visibly inspect hitch to make sure proper coupling has been engaged)

**20K**  
GTW

# R20 ROLLER



16550

- 20,000 lbs. towing capacity
- Non-binding rods
- True rolling unit - not just a slider
- 12" travel - most competitive models only offer 10"
- Wheels bear the weight, not the rods - Many competitive models rely on hollow rods to bear the weight
- Mounts to industry standard rails
- Meets or exceeds current and proposed industry standards
- Durable carbide powder coat finish
- **Ten year warranty**

Pkg#	Capacity	Description
16550	20,000 lbs.	R20 5th wheel roller

16k  
GTW

# E16 5TH WHEEL



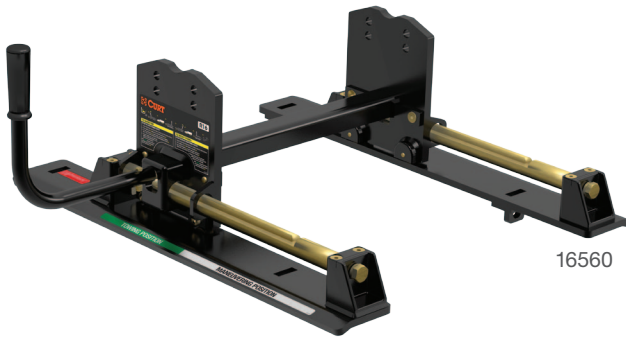
16115

- 16,000 lbs. towing capacity
- Single handle operation
- Auto locking mechanism
- Dual-pivot head
- Four position height adjustment
- 10° lateral movement
- Anti-rattle skid plate
- Mounts to industry standard rails
- Meets or exceeds current and proposed industry standards
- Durable carbide powder coat finish
- For replacement parts, visit [curtmfg.com](http://curtmfg.com)
- Install kits available on page 178
- **Five year warranty**

Pkg#	Description	Capacity	Height
16115	E16 5th wheel	16,000 lbs.	13" - 17"
16116	E16 5th wheel with base rails (16200)	16,000 lbs.	13" - 17"
16515	E16 5th wheel head unit (for use with the 16560 R16 roller)	16,000 lbs.	--
16516	E16 5th wheel (16515) with R16 roller (16560)	16,000 lbs.	14" - 17"
16616	E16 5th wheel (16515) with R16 roller (16560) and base rails (16200)	16,000 lbs.	14" - 17"

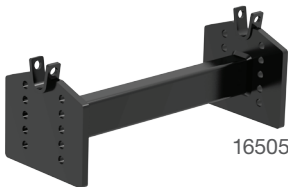
16k  
GTW

# R16 ROLLER



16560

- 16,000 lbs. towing capacity
- Non-binding rods
- True rolling unit - not just a slider
- 12" travel - most competitive models only offer 10"
- Wheels bear the weight, not the rods - Many competitive models rely on hollow rods to bear the weight
- Mounts to industry standard rails
- Meets or exceeds current and proposed industry standards
- Durable carbide powder coat finish
- **Five year warranty**



16505

Pkg#	Capacity	Description
16560	16,000 lbs.	R16 5th wheel roller
16505	--	Included in 16515, 16516 and 16616 kits. Adapts the 16115 or 16116 head to CURT rollers

# CUSTOM 5TH WHEEL BRACKET KITS



16424

- Reduces or eliminates drilling, which can cut installation times in half
- Use in combination with 16104/16204 rails
- No need for universal brackets and hardware

Make/Model	Style	Years	Bracket Kit#	Notes	Base Rails Needed	
					Carbide	Black
<b>Chevrolet/GMC</b>						
1500/2500LD Silverado/Sierra	New body	07-13	16412	∅	16204	16104
	Classic body	99-07	16418	--	16204	16104
2500HD/3500 Silverado/Sierra	--	11-13	16413	∅	16204	16104
		01-10	16418	--	16204	16104
<b>Dodge</b>						
Ram 1500	--	09-10	16422	--	16204	16104
	Excluding Mega and Crew Cabs	2009	16421*	--	16204	16104
	6' and 8' beds, Mega Cab	06-08	16420	∅	16204	16104
	Excluding Mega Cab	02-08	16419	∅	16204	16104
Ram 2500 & 3500	--	03-12	16420	∅	16204	16104
<b>Ford</b>						
F-150 & F-250LD	6' 5" and 8' beds	04-12	16441	∅	16204	16104
	--	97-03	16437	∅	16204	16104
F-150 Heritage Edition	Heritage Edition	2004	16437	∅	16204	16104
F-250 & F-350 Super Duty	--	11-12	16424	∅	16204	16104
		05-10	16448	--	16204	16104
		99-04	16443	--	16204	16104
F-450 Super Duty	Excluding Cab & Chassis	11-12	16424	∅	16204	16104
		08-10	16448	--	16204	16104
<b>Nissan</b>						
Titan	--	04-12	16470	--	16204	16104
<b>Toyota</b>						
Tundra	6' 5" bed, excluding Crew Max	07-12	16468	--	16204	16104
	Standard cab, long box	00-06	16465	∅	16204	16104

∅ = No drill

\* Continued while supplies last

# SEMI-CUSTOM 5TH WHEEL BRACKET KITS

- Required for these vehicles if not using the custom bracket kits shown above
- Use in combination with 16104/16204 rails
- 16300 and 16305 do not require universal brackets



16300



16305

Make/Model	Style	Years	Bracket Kit#	Notes	Base Rails Needed	
					Carbide	Black
<b>Dodge</b>						
Ram 1500	--	09-12	16305*	Drill	16204	16104
		02-08	16303	Drill	16200	16100
Ram 2500 & 3500	--	03-12	16301	Drill	16200	16100
<b>Ford</b>						
F-150	Excluding Heritage Edition	04-11	16300*	Drill	16204	16104
<b>Toyota</b>						
Tundra	6' 5" and 8' beds, excluding Crew Max	07-08	16304	Drill	16200	16100
	Standard cab, long box	00-06	16302	Drill	16200	16100

\* Use with 16104/16204 rails, universal brackets not required

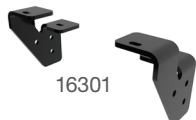


16302



16303

16304



16301

# UNIVERSAL 5TH WHEEL BASE RAILS

- Can be used with all CURT and competitive 5th wheels, rollers, bent plate goosenecks and Spyder goosenecks
- Some vehicles require semi-custom brackets, see page 178



Gloss#	Carbide#	Zinc #	Multi-Pack#	Description
16100	16200	--	--	Two 5th wheel base rails (with 16101 universal brackets)
16104	16204	--	--	Two 5th wheel base rails only (without 16101 universal brackets)
16101	--	--	--	Universal installation brackets and hardware
--	--	16103	16103010	Replacement rail bolts, needed when reinstalling used rails; 16103 contains 8 bolts, 16103010 contains 10 sets of 8 bolts



## 20K GTW X5 GOOSENECK HITCH TO 5TH WHEEL HITCH ADAPTER PLATE

- Adapts popular gooseneck hitches to 5th wheel rails
- For use with CURT and competitive 5th wheels up to 20,000 lbs.



Bulk#	Ball Shank Style
16210	Round shank (for CURT Double Lock goosenecks)
16310	Square shank (competitive products)

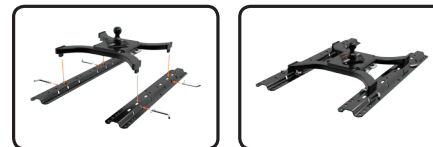


## 25K GTW 5TH WHEEL RAIL SPYDER GOOSENECK HITCH

- Includes 2 5/16" welded ball, chain hook-ups and pins & clips
- Four pin installation and removal for easy access to truck bed
- Mounts to all industry standard 5th wheel rails



Pkg#	GTW	Finish
16085	25,000 lbs.	Carbide powder coat

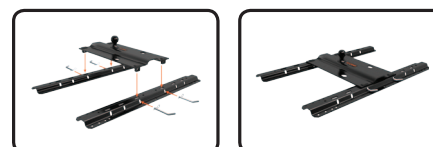


## 25K GTW 5TH WHEEL RAIL BENT PLATE GOOSENECK HITCH

- Four pin installation and removal for easy access to truck bed
- Welded 2 5/16" trailer ball with 3" offset from front to rear
- Mounts to all industry standard 5th wheel rails
- Pins & clips included



Pkg#	GTW	Finish
16055	25,000 lbs.	Carbide powder coat



# 5TH WHEEL LUBE PLATE

- Eliminates messy grease deposits
- Reduces normal wear and tear when towing

Bulk#	25-Pack Tray#	Description
16721	16721025	10" 5th wheel lube plate



# 5TH WHEEL SAFETY CHAIN LOOPS

- Pins into 5th wheel rails

Pkg#	Description
16000	Safety chain loops with pins & clips



# SOUND DAMPENING PADS

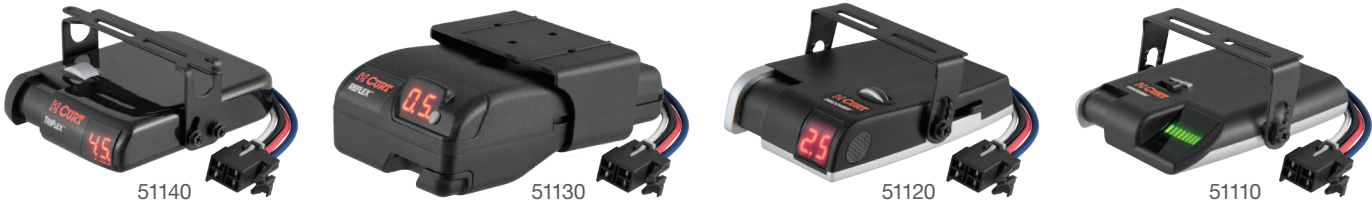
- Place between rails and 5th wheel to eliminate rattling

Bulk#	Pkg#	Description
16900	16901	5th wheel dampening pad kit



# BRAKE CONTROLS

- See page 138 for our full listing



## CURT Brake Controls Quick Reference

Pkg#	Model Name	6-pack Bulk#	Axles				Activation	Display	Mount Angles	Level Adjust	Warranty
			1	2	3	4					
51140	TriFlex	51142	X	X	X	X	Inertia tri-axis accelerometer	Digital	Various	Auto	Limited lifetime
51130	Reflex	51132	X	X	X	X	Inertia dual-axis accelerometer	Digital	Various	Auto	Limited lifetime
51120	Discovery	51122	X	X	X	X	Time	Digital	Any	Auto	Limited lifetime
51110	Venturer	--	X	X	X	-	Time	LED	Any	Auto	Limited lifetime

# 5TH WHEEL/GOOSE FACTORY EXTENSION

- Routes a 7-way RV blade socket into truck bed while retaining use of 7-way RV blade at rear of vehicle
- Plugs, or T's, into factory harness



56070



56071

Make & Model	Years	7' Pkg#	10' Pkg#
<b>Chevrolet/GMC</b>			
Silverado/Sierra	99-13	56070	56000
<b>Dodge</b>			
Dakota	95-10	56071	56001
Ram 1500	09-12	56070	56000
	95-08	56071	56001
Ram 2500/3500	10-12	56070	56000
	95-09	56071	56001
<b>Ford</b>			
F-150 & F-250 Light Duty	97-03	56070	56000
F-150, including Heritage Edition	04-12	56070	56000
F-250/F-350 Super Duty	99-12	56070	56000
F-450/F-550 Super Duty	99-12	56070	56000
<b>Nissan</b>			
Titan	04-10	56070	56000
<b>Toyota</b>			
Tundra	10-12	56070	56000



56001  
Packaged



56000  
Packaged

# 5TH WHEEL/GOOSE UNIVERSAL EXTENSION

- Universal 7-way extension
- Fits any 7-way RV blade socket
- Seven foot length



56080



Packaged

Pkg#	Description
56080	Routes existing 7-way plug at rear of vehicle into truck bed

# TOWING LIGHTS

- 20 foot cord with 4-way flat plug allows for plug-and-go convenience
- Non-scratch magnetic base
- Patent# D355,270

Pkg#	Description
53200	Auxiliary magnetic towing lights
53204	Auxiliary magnetic towing light kit (includes heavy duty storage case)



53204