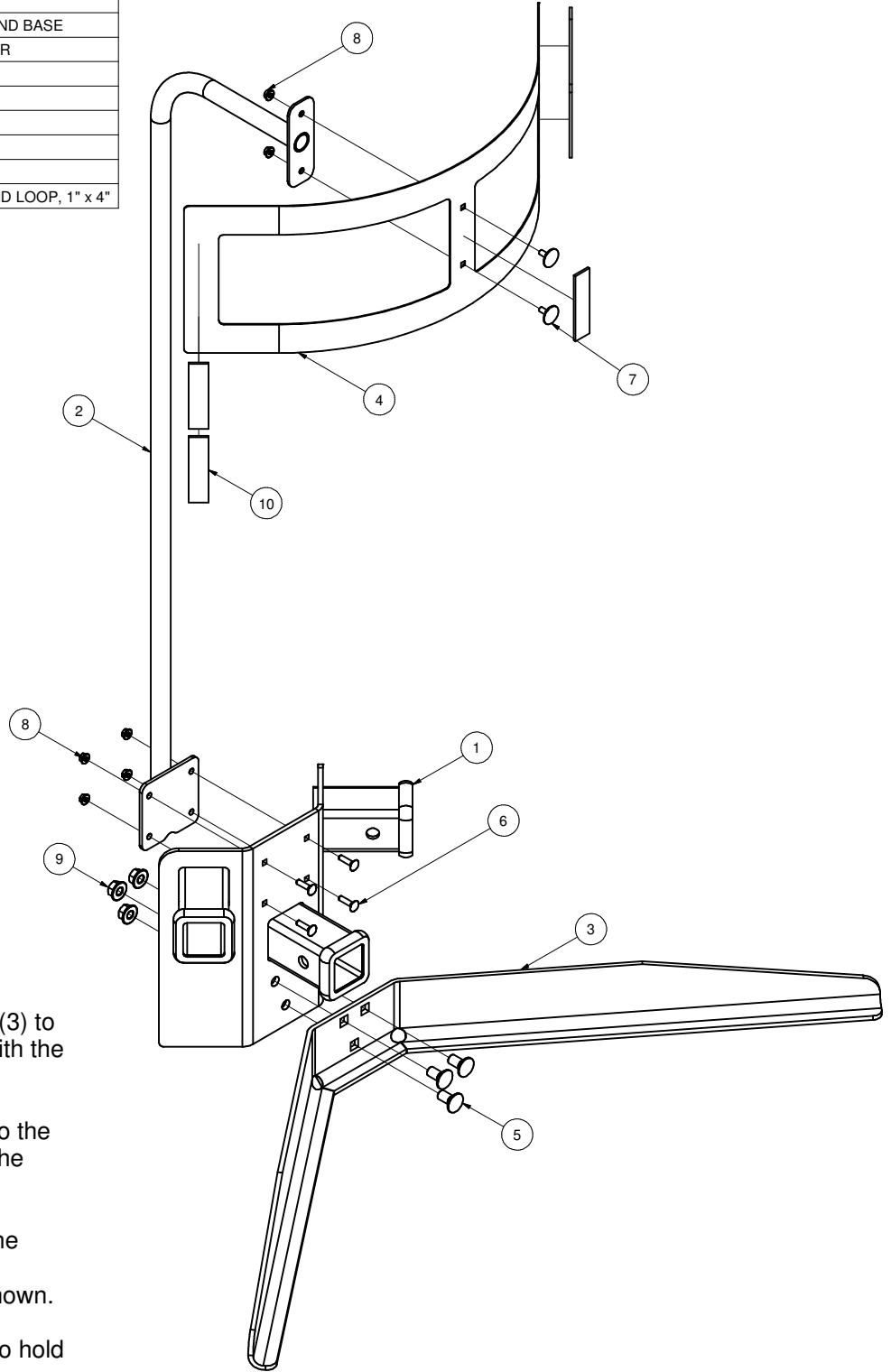


99039**3 - BIKE RACK DISPLAY STAND**

1/3/13

Parts List			
ITEM	QTY	PART NUMBER	DESCRIPTION
1	1	CM-99039-008	MAIN BODY WELDMENT
2	1	CM-99039-007	POST WELDMENT
3	1	CM-99039-002	.250" DISPLAY STAND BASE
4	1	CM-99039-005	16GA. SIGN BACKER
5	3	1/2-13 x 1	CARRIAGE BOLT
6	4	1_4 - 20 x 1	CARRIAGE BOLT
7	2	1/4 - 20 x 3/4	ELEVATOR BOLT
8	6	1/4-20	HEX FLANGE NUT
9	3	HFN 1213	HEX FLANGE NUT
10	5	CM-VEL-001	VELCRO, HOOK AND LOOP, 1" x 4"

**ASSEMBLY INSTRUCTIONS:**

1. Attach the display stand base (3) to the main body weldment (1) with the 1/2" hardware as shown.
2. Attach the post weldment (2) to the main body weldment (1) with the 1/4" hardware as shown.
3. Attach the sign backer (4) to the post weldment (2) with the remaining 1/4" hardware as shown.
4. Apply Velcro strips as shown to hold the printed sign.

PERIODICALLY CHECK THIS DISPLAY STAND TO ENSURE THAT ALL FASTENERS ARE TIGHT AND THAT ALL STRUCTURAL COMPONENTS ARE SOUND.

Curt Manufacturing LLC., warrants this product to be free of defects in material and/or workmanship at the time of retail purchase by the original purchaser. If the product is found to be defective, Curt Manufacturing LLC., may repair or replace the product, at their option, when the product is returned, prepaid, with proof of purchase. Alteration to, misuse of, or improper installation of this product voids the warranty. Curt Manufacturing LLC.'s liability is limited to repair or replacement of products found to be defective, and specifically excludes liability for incidental or consequential loss or damage.