



INSTALLATION MANUAL

70152

Level of Difficulty

Difficult

Installation difficulty levels are based on time and effort involved and may vary depending on the installer level of expertise, condition of the vehicle and proper tools and equipment.

Installed Attachment Tabs

Height	18-1/4"
Width	22"

Parts List

Qty	Description
2	10mm x 35mm Flange Bolt (Existing)
1	Baseplate Weldment Assembly
2	Side Plate Spacer
1	Electrical Flat Bracket
2	Base Plate T-Bolt Pin Assembly Long
8	Bolt, Car, 1/2-13 UNC, 1-1/2, GRD8, YZ
2	HHCS, M10x1.5,50,CL 10.9, YZ
2	SDSHW, 12-14, 1, ZP
8	Nut, SER-Flange, 1/2-13 UNC, GRD8, YZ
2	Washer, S-CON, 3/8, YZ
8	.250 x 1.00 x 2.00" Square Hole Spacer
8	Fish Wire 1/2" x 20"
2	Caplugs # DOP-1375
2	.500" Quick Link
2	7500 lb Safety Cable

Tools Required

Flat screwdriver	Reciprocating saw
Phillips screwdriver	Hole saw, 1-1/4
Drill	Utility knife
Drill bit, 1/2	Torque wrench
Ratchet, 1/2	Torx bit®, T-40
Ratchet, 3/8	Loctite® RED
Socket, 3/4	Large vise grips
Socket, 8mm	Grinder
Socket, 10mm	Trim removal tools
Socket, 16mm	Tape measure
Socket, 17mm	

⚠ WARNING

Never exceed the vehicle manufacturer's recommended towing capacity.

Product Photo



NOTICE

Visit www.curtmfg.com for a full-color copy of this instruction manual, as well as helpful videos, guides and much more!

Before you begin installation, read all instructions thoroughly.

Proper tools will improve the quality of installation and reduce the time required.

This installation requires:

- Removal of bumper fascia (temporarily)
- Removal of the bumper (permanent)
- Removal of the skid shield (temporarily)
- Removal of fenders (temporarily)
- Removal of the wheel well (temporarily)
- Trimming and drilling is required
- Fishwiring required

Periodic inspection of the trailer hitch should be performed to ensure all mounting hardware remains tight and structural components are secure.

To help prevent damage to the product or vehicle, refer to the specified torque specifications when securing hardware during the installation process.

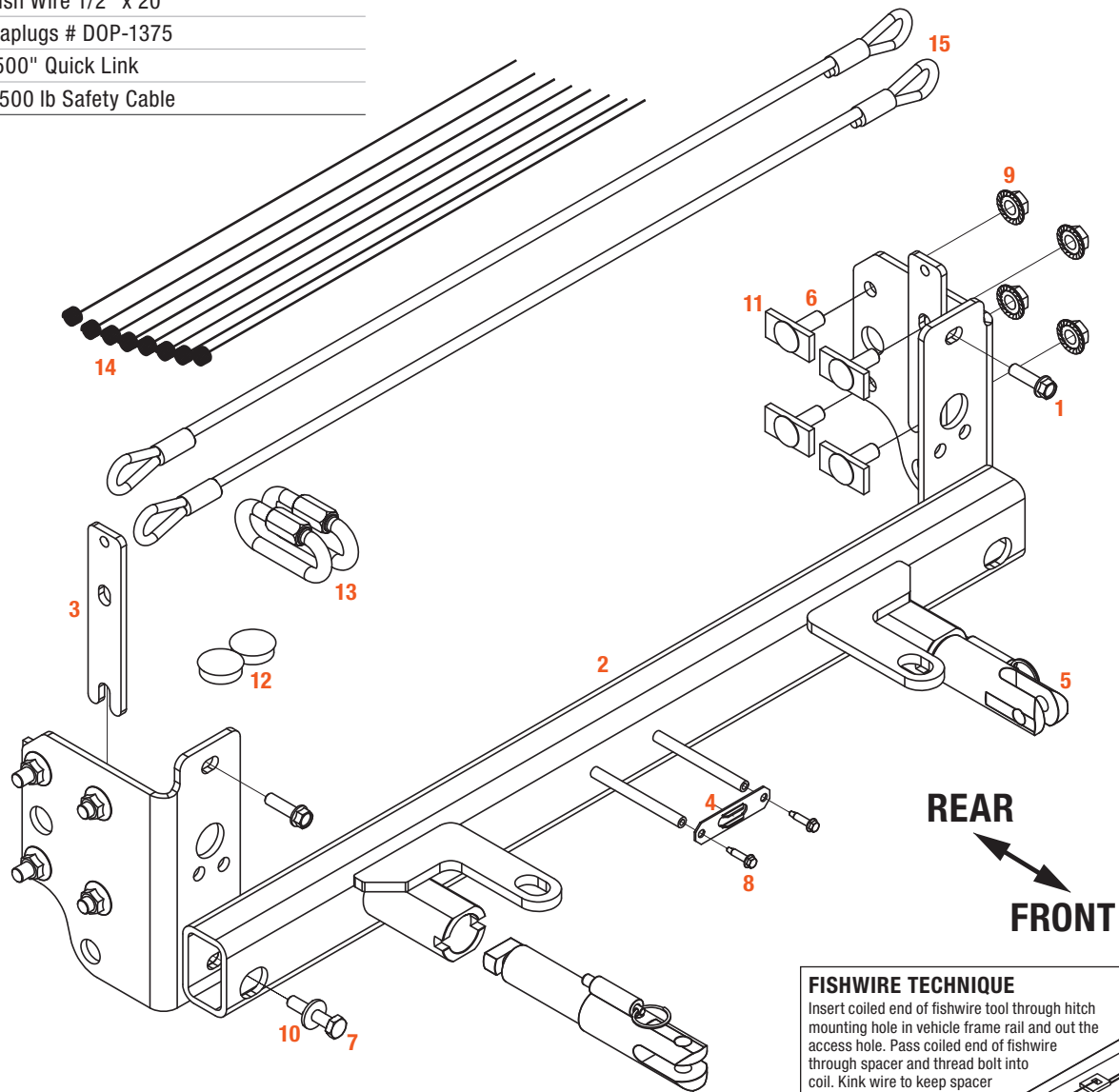
Product Registration and Warranty

CURT stands behind our products with industry-leading warranties. To get copies of the product warranties, register your purchase or provide feedback, visit: warranty.curtgroup.com/surveys

ASSEMBLY

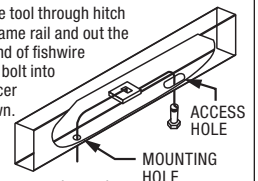
Parts List

Item	Qty	Description
1	2	10mm x 35mm Flange Bolt (Existing)
2	1	Baseplate Weldment Assembly
3	2	Side Plate Spacer
4	1	Electrical Flat Bracket
5	2	Base Plate T-Bolt Pin Assembly Long
6	8	Bolt, Car, 1/2-13 UNC, 1-1/2, GRD8, YZ
7	2	HHCS, M10x1.5,50,CL 10.9, YZ
8	2	SDSHW, 12-14, 1, ZP
9	8	Nut, SER-Flange, 1/2-13 UNC, GRD8, YZ
10	2	Washer, S-CON, 3/8, YZ
11	8	.250 x 1.00 x 2.00" Square Hole Spacer
12	8	Fish Wire 1/2" x 20"
13	2	Caplugs # DOP-1375
14	2	.500" Quick Link
15	2	7500 lb Safety Cable



FISHWIRE TECHNIQUE

Insert coiled end of fishwire tool through hitch mounting hole in vehicle frame rail and out the access hole. Pass coiled end of fishwire through spacer and thread bolt into coil. Kink wire to keep spacer separate from bolt as shown. Pull fishwire, spacer and bolt through frame and out mounting hole. Use fishwire to guide hitch during mounting and prevent loss of bolt or spacer inside frame rail.



Step 1

Remove the ten push pins from the top fascia cover.

Remove fascia cover and set aside to be reinstalled later.



Step 2

Using a T-40 torx, remove the six bolts from the top of the grille.



Step 3

Using a 10mm socket, remove the one bolt from the top of the grille.

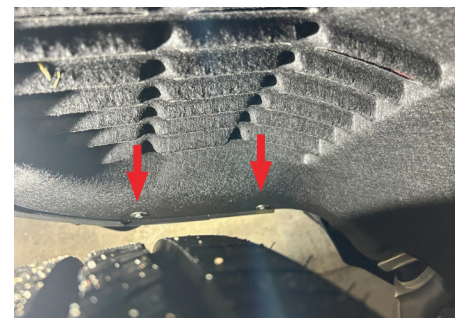
Repeat this process on both sides of the vehicle.



Step 4

Using an 8mm socket, remove the five bolts from along the edge of wheel well.

Repeat this process on both sides of the vehicle.



Step 5

Pull back the wheel well liner. Then using a 10mm socket, remove the one bolt from the fascia joint.

Repeat this process on both sides of the vehicle.



Step 6

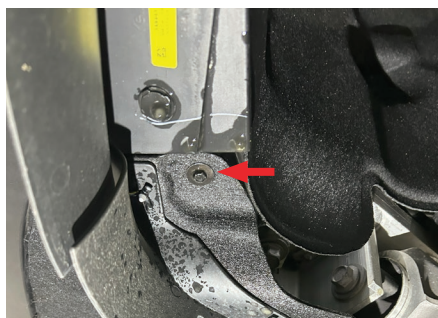
Using an 8mm socket, remove the five bolts from the belly pan.



Step 7

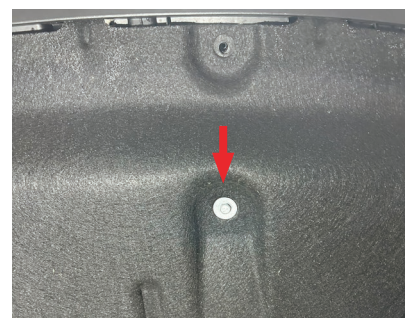
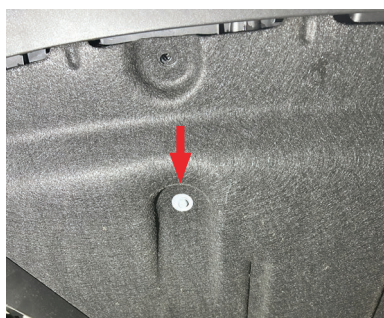
Using an 8mm socket, remove the one bolt from the underside of the fascia in front of the tire.

Repeat this process on both sides of the vehicle.



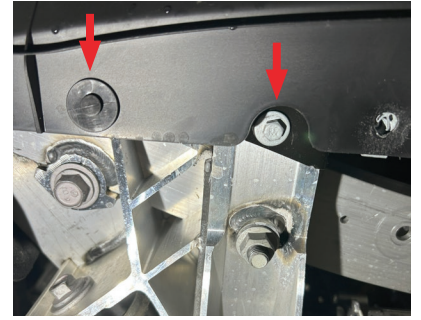
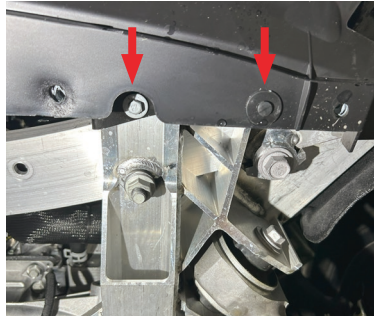
Step 8

Using a 10mm socket, remove the two bolts, one on each side, from the belly pan.



Step 9

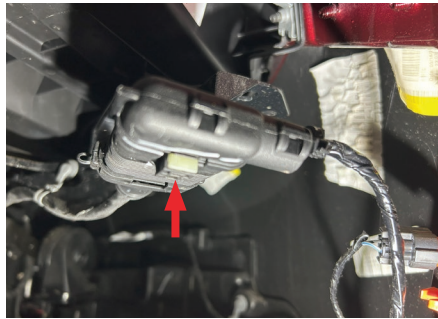
Let the belly pan hang. Using a 10mm socket, remove the two bolts from the underside of the fascia. Then remove the two push pins.



Step 10

Unplug one electrical connection on the passenger side of the vehicle. If present, disconnect washer fluid lines going to the front of the fascia.

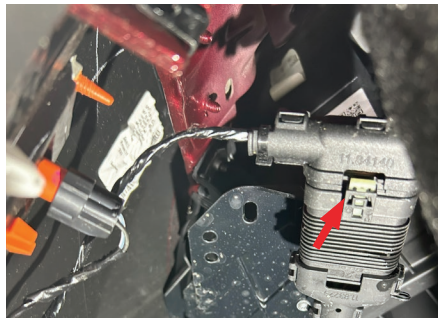
Note: The number of plugs/lines to disconnect will vary depending on the trim level of the vehicle.



Step 11

Unplug one electrical connection on the driver side of the vehicle. If present, disconnect washer fluid lines going to the front of the fascia.

Note: The number of plugs/lines to disconnect will vary depending on the trim level of the vehicle.



Step 12

Starting from the front of the fender, gently start pulling outward away from the vehicle to gain access to the fascia joint.

Repeat this process on both sides of the vehicle.

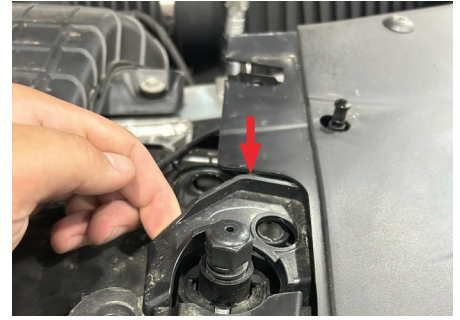


Step 13

Starting from the edge of the fascia, gently pull outwards away from the vehicle to release the clips holding the fascia.

Repeat this process on both sides of the vehicle.

Once the clips have been released, lift the locating tabs on the top of the grille on each side of the vehicle. Remove the Fascia and set it aside to be reinstalled later.



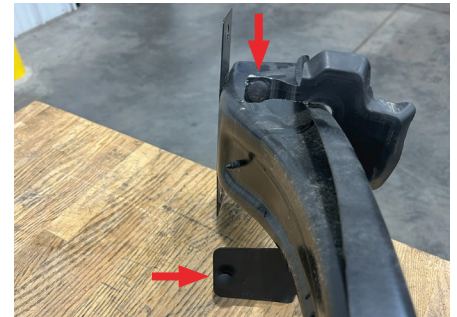
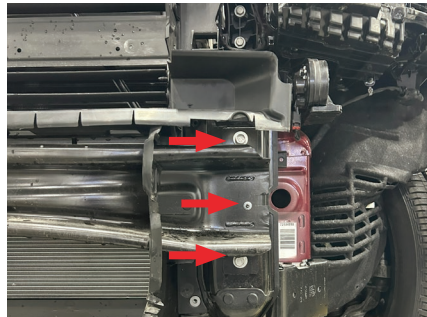
Step 14

Using a 16mm socket, remove the two bolts from the bumper. Then using a 10mm socket, remove the one nut.

Perform this process on both sides of the vehicle.

Remove the bumper and set aside. It will not be reinstalled later.

As the bumper is removed, remove two push pins from shroud piece around bumper. Remove shroud piece.



Step 15

Using a reciprocating saw, trim the frame as shown.

Perform this process on both sides of the vehicle.

Note: Additional trimming may be required, trim as needed for fitment.



Step 16

Create a mark on the frame that is 3" down from the center of the top bolt hole and centered horizontally from the center of the top bolt hole.

Then using a 1-1/4" hole saw drill a new hole.

Perform this process on both sides of the vehicle as needed.

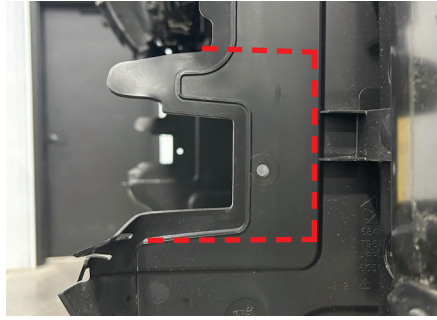


Step 17

Using a reciprocating saw, trim the plastic shroud as shown.

Do this on both sides of the vehicle.

Note: Additional trimming may be required, trim as needed for fitment.



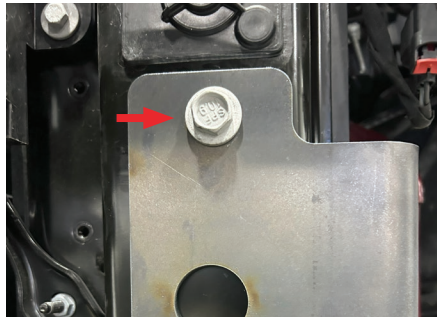
Step 18

Hold base plate into place on the vehicle frame and start the existing 10mm x 35mm bolt (1) in the top hole.

Do this on both sides of the vehicle.

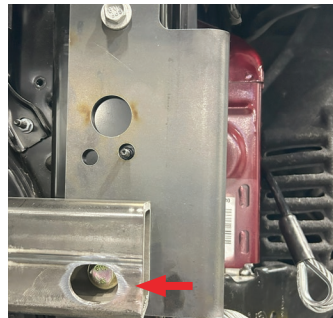
Use Loctite® RED and Torque to 45 ft-lb.

Note: Ensure all hole's line up before tightening bolts.



Step 19

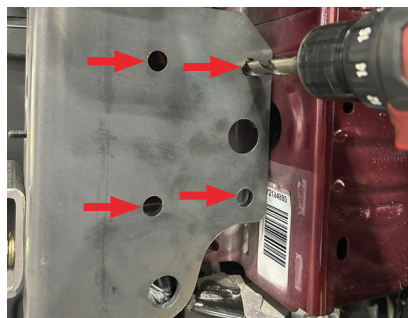
Install a 10mm x 1.5", 50 bolt (7) with a 3/8" conical tooth washer (10) into bottom hole on each side of the vehicle. Use Loctite® RED and Torque to 45 ft-lb.



Step 20

Using 1/2" drill bit, drill the four holes on the side of the frame using the base plate as a template.

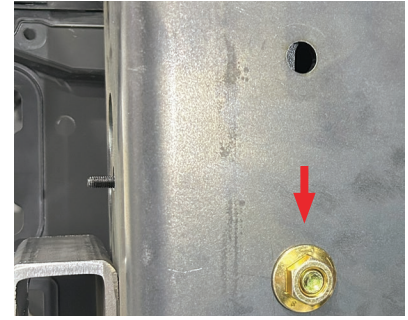
Perform this process on both sides of the vehicle.



Step 21

Using the provided fish wire (12), start a 1/2" x 1-1/2" carriage bolt (6) with spacer (11) and Loctite® RED in the bottom front hole and start a 1/2" serrated nut (9). Leave loose at this time.

Perform this process on both sides of the vehicle.

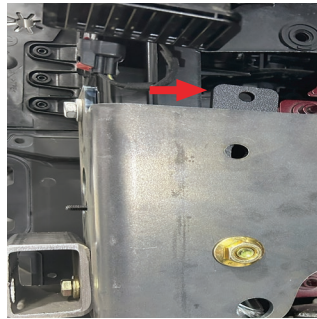


Step 22

Insert the spacer plate (3) at top of base plate between the frame and base plate with the slotted end facing downward.

Once spacer plate is in position, using provided fish wire insert 1/2" x 1-1/2" carriage bolt with spacer and Loctite® RED into top front hole and start a 1/2" serrated nut.

Perform this process on both sides of the vehicle.

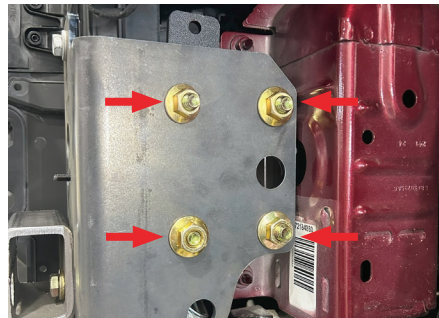


Step 23

Using provided fish wire, install two 1/2" x 1-1/2" carriage bolts with spacer and Loctite® RED into the top and bottom holes and use 1/2" serrated nuts.

Perform this process on both sides of the vehicle.

Torque all eight bolts four on each side to 110 ft-lb.



Step 24

Attach the permanent baseplate safety cables (15) to the provided hole with the provided .500" Quick Link (14) on the baseplate. Install the cables to the frame of the vehicle.

Additional options may interfere with the suggested mounting locations.

For this mounting make sure the cable is secured around a solid piece of frame and is not rubbing on any hoses, wires, or moving parts.



Step 25

Hold the fascia as close to its original position as possible. Mark and trim the fascia around the electrical mounting rods, convenience links, attachment tabs and electrical mounting rods as needed for fitment.

Reinstall the fascia, fascia cover, wheel well liner, fender trim, and belly pan. Make sure all electrical connectors are reconnected properly and any other connectors/ lines depending on vehicle trim.

NOTICE

When the fascia is removed and reinstalled during baseplate installation, it may cause the radar system to malfunction. This can trigger the AEB (Automatic Electronic Braking) and ACC (Adaptive Cruise Control) sensors on 2023 and newer Jeep Grand Cherokee models to malfunction.

To address this issue, we recommend having the system recalibrated by a certified Jeep dealership.



TOWING BASICS & SAFETY INFORMATION

For information on safely towing your trailer, visit curtmfg.com/understanding-towing.

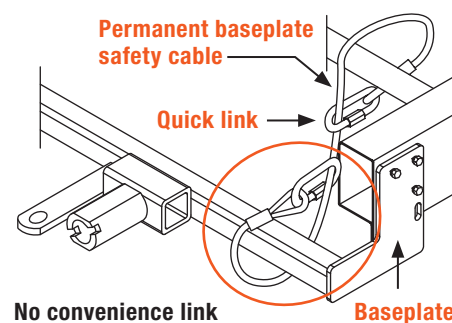
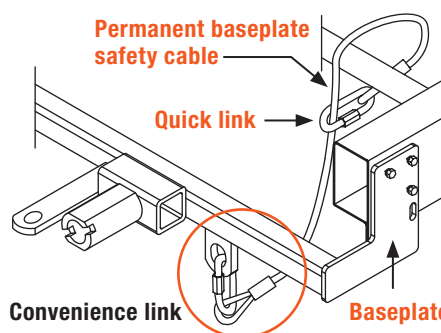
SAFETY CABLE INSTALLATION

Installing the Permanent Base Plate Safety Cables

When dinghy towing a vehicle with a tow bar, base plate safety cables should be used at all times. In the event of a disconnect, the safety cables are designed to help prevent complete vehicle separation. When installing the safety cables, use the illustrations below as a guide.

Installation guidelines

1. The cables must be connected to the base plate and the vehicle frame.
2. Two cables must be installed.
3. Each cable must meet or exceed the gross weight of the towed vehicle.
4. Make sure cables do not pinch or interfere with hoses, wiring or other components.



Note: Base plate safety cables are not a replacement for safety chains connecting the tow vehicle to the towed vehicle.

ADDITIONAL INFORMATION

Towing Tips

Check your equipment

Periodically check the condition of all towing equipment. Ensure all fasteners are tight and that all structural components are sound. Do not tow with worn or damaged parts.

Vehicle manufacturer's recommendations

Review the owner's manual for your towed vehicle and towing vehicle for specific recommendations, capacities and requirements.