



INSTALLATION MANUAL

70151

Level of Difficulty

Difficult

Installation difficulty levels are based on time and effort involved and may vary depending on the installer level of expertise, condition of the vehicle and proper tools and equipment.

Installed Attachment Tabs

Height	15"
Width	30-3/8"

Parts List

Qty	Description
1	70151-DSWA
1	70151-PSWA
2	Base Plate T-Bolt Long
2	Safety cable, 7500 lbs
4	1/2-13 x 3-1/2", Hex Head Bolt, GRD8
2	CAPPLUGS # DOP-1375
4	WASHER, FLAT, 1/2
4	NUT, NYL LOCK, 1/2-13 UNC, GRD8
2	.500" QUICK LINK
1	Elictrical flat bracket
6	10MM x 35MM Flanged Bolt (EXISTING)

Tools Required

Ratchet	Flathead screwdriver
Drill	Loctite® RED
Torx bit, T-15	Socket, 7mm
Torx bit, T-20	Socket, 11mm
Torx bit, T-40	Socket, 13mm
Wrench, 11mm	Socket, 15mm
Wrench, 18mm	Socket, 18mm
Wrench, 19mm	Socket, 19mm
Ratchet, 3/8"	Trim panel pry tool
Ratchet, 1/2"	

Product Registration and Warranty

CURT stands behind our products with industry-leading warranties. To get copies of the product warranties, register your purchase or provide feedback, visit: warranty.curtgroup.com/surveys

⚠ WARNING

Never exceed the vehicle manufacturer's recommended towing capacity.

Product Photo



⚠ CAUTION

Take care when cutting any plastic or metal as injury may occur if done improperly.

NOTICE

Visit www.curtmfg.com for a full-color copy of this instruction manual, as well as helpful videos, guides and much more!

Before you begin installation, read all instructions thoroughly.

Proper tools will improve the quality of installation and reduce the time required.

This installation requires:

- Removal of recovery loops / D-rings (permanent)
- Removal of bumper (temporarily)
- Removal of skid shield (temporarily)
- Possible trimming (permanent)
- No fishwiring required

Periodic inspection of your product should be performed to ensure all hardware and / or components remain secure.

To help prevent damage to the product or vehicle, refer to the specified torque specifications when securing hardware during the installation process.

SAFETY INSTRUCTIONS

Safety glasses should be worn at all times while installing this product.

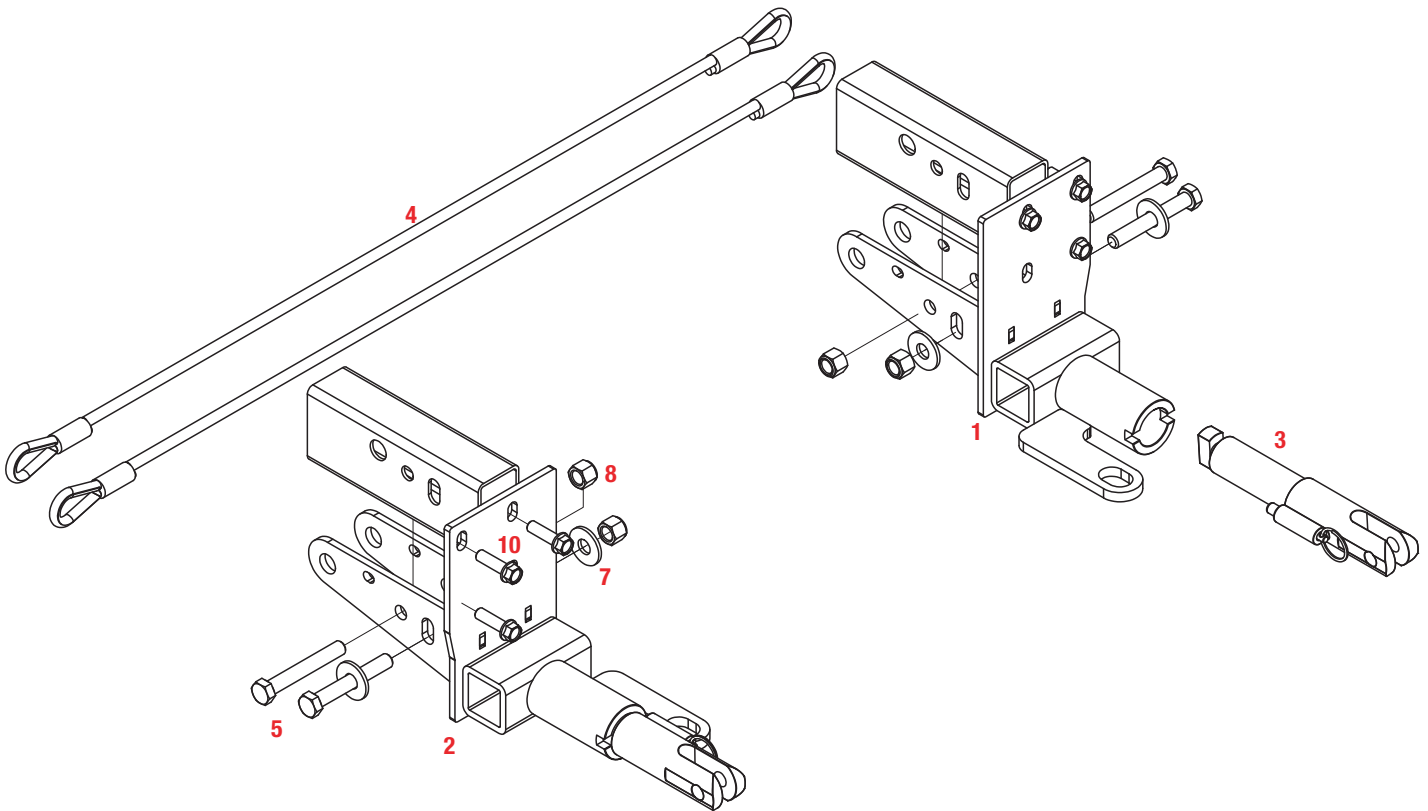
Maintenance

Mild automotive detergent may be used to clean the product. Do not use dish detergent, abrasive cleaners, abrasive pads, wire brushes or other similar products that may damage the finish.

ASSEMBLY

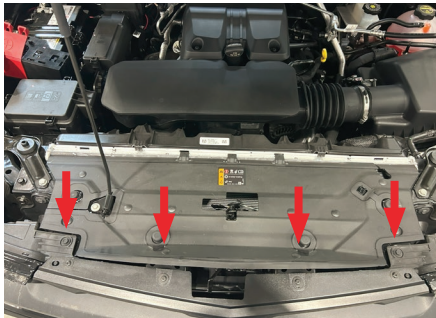
Parts List

Item	Qty	Description
1	1	70151-DSWA
2	1	70151-PSWA
3	2	Base Plate T-Bolt Long
4	2	Safety cable, 7500 lbs
5	4	1/2-13 x 3-1/2", Hex Head Bolt, GRD8
6	2	CAPPLUGS # DOP-1375 (Not Shown)
7	4	WASHER, FLAT, 1/2
8	4	NUT, NYL LOCK, 1/2-13 UNC, GRD8
9	2	.500" QUICK LINK (Not Shown)
10	6	10MM x 35MM Flanged Bolt (EXISTING)



Chevy Colorado Fascia Removal: Step 1

Use a T15 Torx to remove the four (4) bolts from the top edge of the fascia.



Step 2a

If your vehicle is equipped with fender flares, remove them by pulling outward away from the vehicle.

Note: Plastic trim tools are recommended.



Step 2b

Using a T15 Torx, remove the seven (7) Torx head bolts from along the edge and the underside of the wheel well.

Remove one (1) plastic clip on the underside of the wheel well.

Do this on both sides of the vehicle.

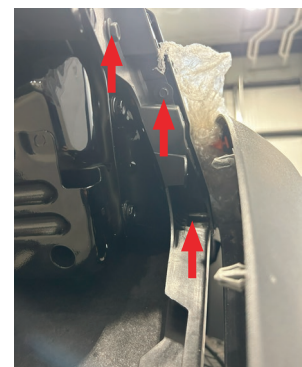


Step 3

Pull back the wheel well liner.

Using a 7MM socket and a 10MM wrench, remove the two (2) bolts from in the wheel well and loosen the one (1) 10MM bolt. This will allow the fascia to separate from the fender.

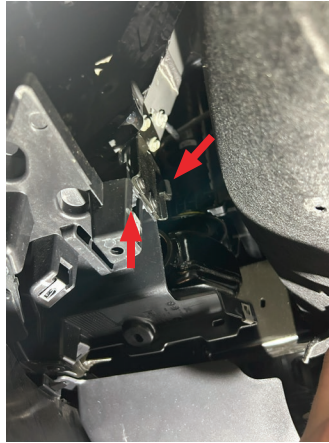
Do this on both sides of the vehicle.



Step 4

With the fender liner pulled back, use a T15 Torx to remove the two (2) bolts in the wheel well.

Do this on both sides of the vehicle.



Step 5

Using pliers, remove the two (2) clips that hold the lower plastic fascia to the upper fascia.

Do this on both sides.



Step 6

Using a 13MM socket, remove the five (5) Hex head bolts from the skid plate on the underside of the vehicle.

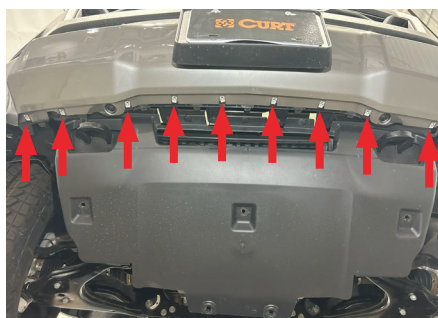
Remove skid plate and set it aside to be reinstalled later.



Step 7

Using a T15 Torx, remove the ten (10) Torx head bolts from the bottom of the lower fascia.

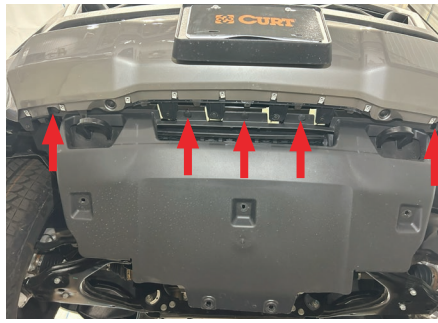
Set the lower fascia aside to be reinstalled later.



Step 8a

Using plastic trim tool, remove the five (5) plastic snap pins.

Remove skid plate and set aside for reinstall later.



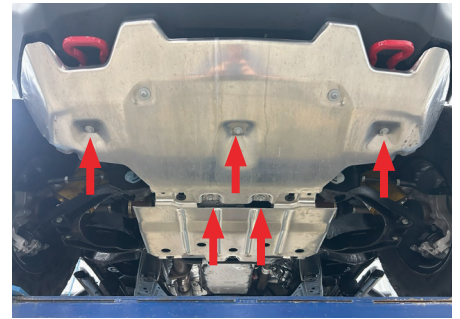
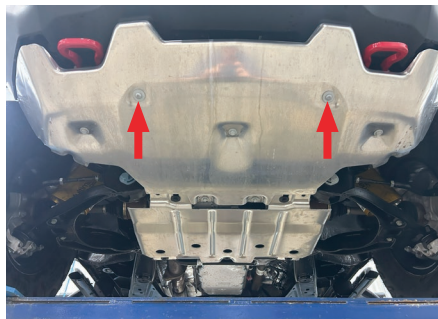
Step 8b - METAL SKID PACKAGE ONLY

Using a T40 Torx, remove the two (2) Torx head bolts.

Next using a 13MM socket, remove the five (5) Hex head bolts.

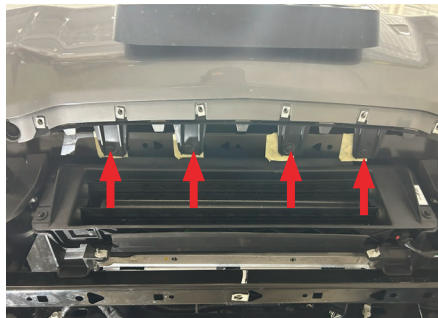
Remove skid plate and set it aside for reinstall later.

Note: The hex head bolt lengths are different. Make sure they are reinstalled in the proper location.



Step 9

Using a T15 Torx, remove the four (4) Torx head bolts from the bottom of the fascia.



Step 10 - METAL SKID PACKAGE ONLY

Using a 13MM socket, remove the four (4) hex head bolts from the belly pan.

Remove the belly pan and set it aside to be reinstalled later.

Note: For the upper belly pan bolts, the front fascia may have to be removed before reaching these bolts. Depending on trim level.



Step 11

Start removing the fascia.

Note: Keep track of all fascia clips.

On the passenger side, unplug the connector by sliding the red tab back towards the wires then squeeze and pull and the connector will release.

Remove fascia and set it aside to be reinstalled later.



GMC Canyon Fascia Removal: Step 1

Use a T15 Torx, remove the four (4) bolts from the top edge of the fascia.



Step 2

Using a T15 Torx, remove the eight (8) Torx head bolts from along the edge of the wheel well and in front of the tire.

Note: The tire may need to be turned to gain access to bolts.

Do this on both sides of the vehicle.



Step 3

Gently remove the plastic fender trim starting from the front, to gain access to the fascia joint.

Using a T15 Torx, remove the one (1) bolt from the fascia joint.

Do this on both sides of the vehicle

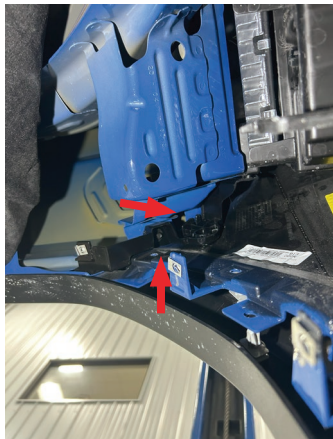


Step 4

Pull back the wheel well liner.

Using a 7MM socket, remove the two (2) bolts from the wheel well. This will allow the fascia to separate from the fender.

Do this on both sides of the vehicle.



Step 5

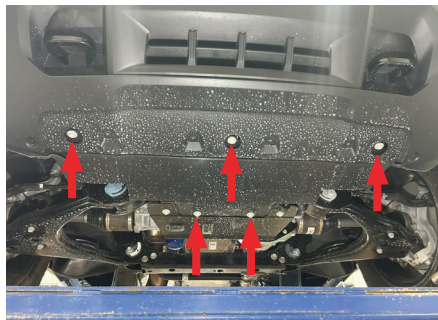
With the fender liner pulled back, use a T15 Torx to remove the two (2) bolts in the wheel well.

Do this on both sides of the vehicle.



Step 6

Using a T15 Torx, remove the six Torx head bolts.



Step 7

Start removing the fascia.

Note: Keep track of all fascia clips.

On the passenger side, unplug the connector by sliding the red tab back towards the wires then squeeze and pull and the connector will release.

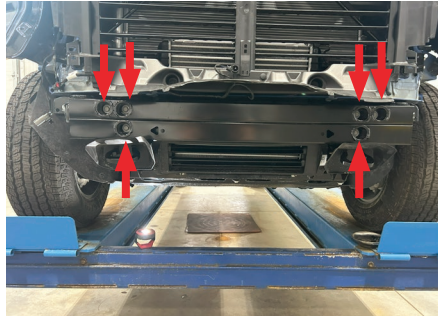
Remove fascia and set it aside to be reinstalled later.



Baseplate Installation

Step 1

Using a 15MM socket, remove the six (6) bolts from the bumper.



Step 2

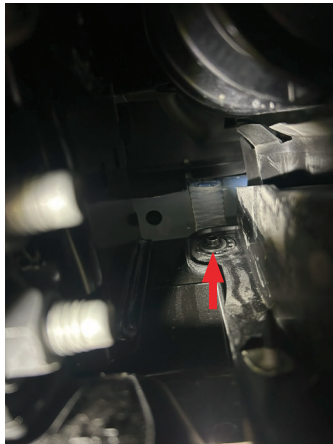
Using a 7MM socket, remove the one (1) bolt from behind the bumper.

Do this on both sides of the vehicle.

CAUTION

ONCE BOTH BOLTS ARE REMOVED THE BUMPER IS NOT SECURED ANYMORE AND MAY FALL.

Remove bumper and set it aside to be reinstalled later.



Step 3

Using an 18MM socket and an 18MM wrench, remove the two (2) bolts from the tow hook.

Remove the tow hook. It will not be reinstalled.

Do this on both sides of the vehicle.



Step 4

After the driver side tow hook is set aside remove the one push pin from the driver side.



Step 5a - Chevy Colorado Models

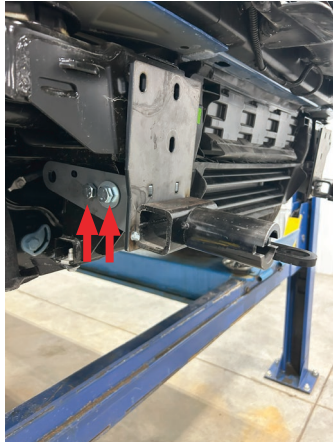
Slide the baseplate onto the tow hook housing of the vehicle.

Start two (2) 1/2" x 3-1/2" bolts with washers on both sides of only the front bolt.

Loosely put nylon locking nuts on both bolts.

Do not tighten the bolts. Leave the baseplate loose.

Do this on both sides of the vehicle.



Step 5b - GMC Canyon Models

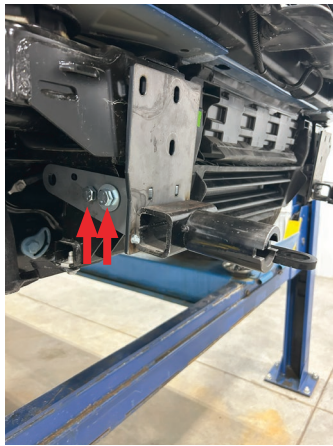
Slide the baseplate onto the tow hook housing of the vehicle.

Start two (2) 1/2" x 3-1/2" bolts with washers on both sides of only the front bolt.

Loosely put nylon locking nuts on both bolts.

Do not tighten the bolts. Leave the baseplate loose.

Do this on both sides of the vehicle.

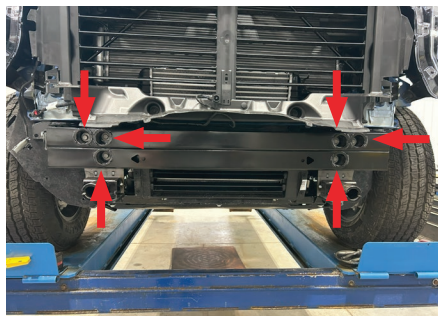


Step 6

Reinstall bumper on top of the baseplate using the six (6) existing bolts that were taken out from Step 1 of the Baseplate Installation. Torque to 35 ft-lbs.

Note: Holes may need to be reamed out to line up properly with the baseplate.

* Loctite® Red on all bolt threads and tighten to proper torque specifications.*

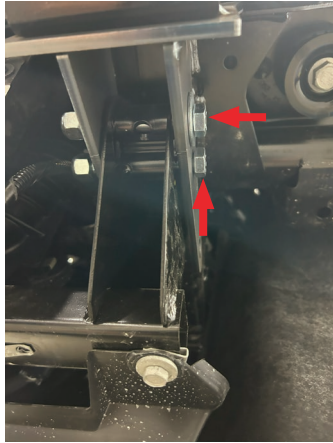


Step 7

Tighten the two (2) 1/2" bolts on the side of the baseplate to remove any frame gap. Torque to 110 ft-lbs.

Do this on both sides of the vehicle.

* Loctite® Red on all bolt threads and tighten to proper torque specifications. *



Step 8

Attach the permanent baseplate safety cables to the provided hole with the provided .500" Quick Link on the baseplate.

The photo shows the recommended installation of the cables to the frame of the vehicle. Additional options may interfere with the suggested mounting.

⚠ CAUTION

Be sure the safety cables do not rub against any hoses or moving parts. If the cables are rubbing against any hoses or moving parts, this could cause severe damage to the vehicle .

Do this on BOTH sides of the vehicle.



Step 9a - GMC Canyon Models

Reinstall the belly pan, skid plate, fascia, and reconnect all electrical connectors to proper torque specs and locations.



Step 9b - Chevy Colorado Models

Reinstall the belly pan, skid plate, fascia, and reconnect all electrical connectors to proper torque specs and locations.



Electrical Bracket

If electrical bracket is wanted, purchase Curt PN #58300 and mount to the bracket as desired.



TOWING BASICS & SAFETY INFORMATION

For information on safely towing your trailer, visit curtmfg.com/understanding-towing.

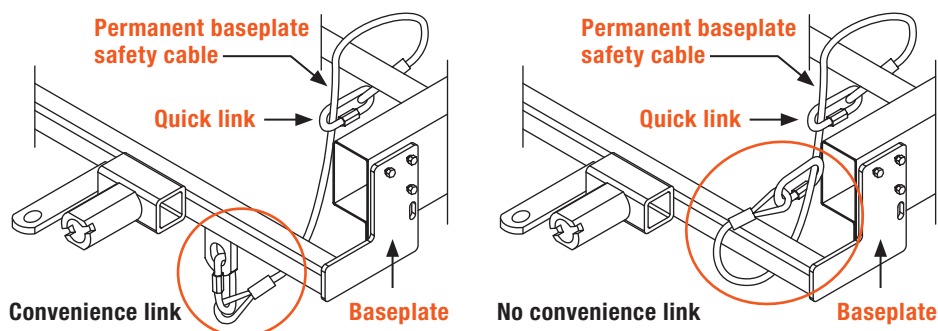
SAFETY CABLE INSTALLATION

Installing the Permanent Base Plate Safety Cables

When dinghy towing a vehicle with a tow bar, base plate safety cables should be used at all times. In the event of a disconnect, the safety cables are designed to help prevent complete vehicle separation. When installing the safety cables, use the illustrations below as a guide.

Installation guidelines

1. The cables must be connected to the base plate and the vehicle frame.
2. Two cables must be installed.
3. Each cable must meet or exceed the gross weight of the towed vehicle.
4. Make sure cables do not pinch or interfere with hoses, wiring or other components.



Note: Base plate safety cables are not a replacement for safety chains connecting the tow vehicle to the towed vehicle.

ADDITIONAL INFORMATION

Towing Tips

Check your equipment

Periodically check the condition of all towing equipment. Ensure all fasteners are tight and that all structural components are sound. Do not tow with worn or damaged parts.

Vehicle manufacturer's recommendations

Review the owner's manual for your towed vehicle and towing vehicle for specific recommendations, capacities and requirements.