

INSTALLATION MANUAL

70135

Level of Difficulty

Difficult

Installation difficulty levels are based on time and effort involved and may vary depending on the installer level of expertise, condition of the vehicle and proper tools and equipment.

Installed Attachment Tabs

| | |
|--------|-----|
| Height | 15" |
| Width | 20" |

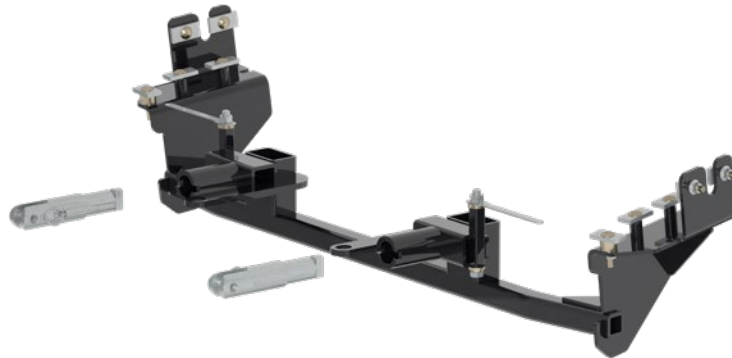
Parts List

| Item | Qty | Description |
|------|-----|--|
| 1 | 1 | Tow bar base plate, driver |
| 2 | 1 | Tow bar base plate, passenger |
| 3 | 1 | Tow bar mounting tab |
| 4 | 2 | Adaptive cruise control bracket |
| 5 | 2 | Safety cable, 7,500 lbs. |
| 6 | 2 | Quick link, 1/2" |
| 7 | 2 | Caplugs |
| 8 | 6 | Flat washer, 1/2" |
| 9 | 2 | Lock washer, 1/2" |
| 10 | 2 | Hex head cap screw, 1/2"-13, grade 5 |
| 11 | 10 | Fishwire, 3/8" |
| 12 | 10 | Square hole spacer, 1/4" x 1" x 2" |
| 13 | 4 | Carriage bolt, 3/8"-16, 2-1/2", grade 8 |
| 14 | 4 | Carriage bolt, 3/8"-16, 1-1/4", grade 8 |
| 15 | 10 | Serrated flange nut, 3/8"-16, grade 8 |
| 16 | 2 | Hex head cap screw, 1/4"-20, 3/4", grade 8 |
| 17 | 2 | Serrated flange nut, 1/4"-20, grade 8 |
| 18 | 12 | Flat washer, 3/8" |
| 19 | 7 | Flat washer, 1/4" |
| 20 | 2 | Carriage bolt, 3/8"-16, 2", grade 8 |
| 21 | 2 | Handle nut, 1/2"-13, grade 8 |

⚠ WARNING

Never exceed the vehicle manufacturer's recommended gross vehicle weight rating (GVWR).

Product Photo



⚠ CAUTION

Take care when cutting any plastic or metal as injury may occur if done improperly.

NOTICE

Visit www.curtmfg.com for a full-color copy of this instruction manual, as well as helpful videos, guides and much more!

Before you begin installation, read all instructions thoroughly.

Proper tools will improve the quality of installation and reduce the time required.

This installation requires:

- Temporary removal of bumper cover, horn, washer reservoir & temperature sensor
- Trimming required
- Fishwiring to install hardware

To help prevent damage to the product or vehicle, refer to the specified torque specifications when securing hardware during the installation process.

If equipped, we recommend removing the base plate attachment tabs when not in use.

SAFETY INSTRUCTIONS

Safety glasses should be worn at all times while installing this product.

Product Registration and Warranty

CURT stands behind our products with industry-leading warranties. To get copies of the product warranties, register your purchase or provide feedback, visit: warranty.curtgroup.com/surveys

Tools Required

| | |
|---------------|---------------|
| Torque wrench | Utility knife |
| Socket, 5.5mm | Large clamp |
| Socket, 8mm | Tape measure |
| Socket, 10mm | Hammer |

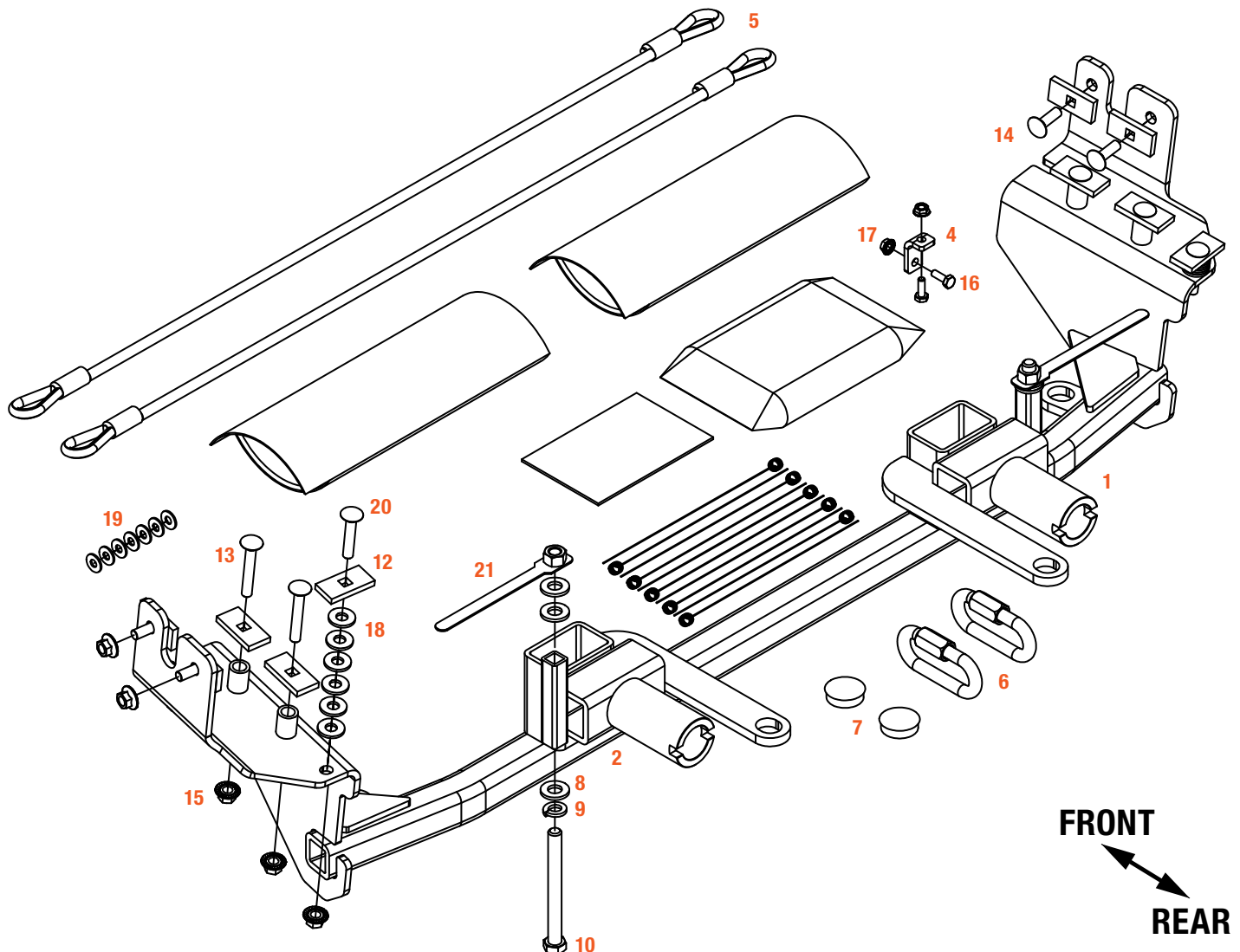
Tools Required

| | |
|----------------------|-------------------|
| Socket, 9/16" | Drill |
| Flat screwdriver | Drill bit, 1/4" |
| Phillips screwdriver | Drill bit, 13/32" |
| Reciprocating saw | Drill bit, 17/32" |

ASSEMBLY

| Parts List | | |
|------------|-----|--------------------------------------|
| Item | Qty | Description |
| 1 | 1 | Tow bar base plate, driver |
| 2 | 1 | Tow bar base plate, passenger |
| 3 | 1 | Tow bar mounting tab |
| 4 | 2 | Adaptive cruise control bracket |
| 5 | 2 | Safety cable, 7,500 lbs. |
| 6 | 2 | Quick link, 1/2" |
| 7 | 2 | Caplugs |
| 8 | 6 | Flat washer, 1/2" |
| 9 | 2 | Lock washer, 1/2" |
| 10 | 2 | Hex head cap screw, 1/2"-13, grade 5 |
| 11 | 10 | Fishwire, 3/8" |
| 12 | 10 | Square hole spacer, 1/4" x 1" x 2" |

| Parts List | | |
|------------|-----|--|
| Item | Qty | Description |
| 13 | 4 | Carriage bolt, 3/8"-16, 2-1/2", grade 8 |
| 14 | 4 | Carriage bolt, 3/8"-16, 1-1/4", grade 8 |
| 15 | 10 | Serrated flange nut, 3/8"-16, grade 8 |
| 16 | 2 | Hex head cap screw, 1/4"-20, 3/4", grade 8 |
| 17 | 2 | Serrated flange nut, 1/4"-20, grade 8 |
| 18 | 12 | Flat washer, 3/8" |
| 19 | 7 | Flat washer, 1/4" |
| 20 | 2 | Carriage bolt, 3/8"-16, 2", grade 8 |
| 21 | 2 | Handle nut, 1/2"-13, grade 8 |



BUMPER REMOVAL

LINCOLN MKS

Step 1

Use a 10mm socket to remove the six screws from the top edge of the bumper cover / grill, three on each side. Remove the two push pins from the center of the cover by the hood latch.

Step 2

Use a 5.5mm socket to remove the three screws from both wheel well liners.

Step 3

Use an 8mm socket to remove the seven screws from the bottom of the bumper cover, three on each side with one in the center.

Step 4

Pry the wheel well liner back and use a 10mm socket to remove three nuts attaching the bumper cover from inside the fender. Pop the corner of the bumper cover outward on both sides of the vehicle working it towards the center. Unplug all electrical connections and set the bumper cover aside.

Proceed to step 7 for base plate installation.

LINCOLN MKT

Step 1

Use a 10mm socket to remove one bolt from the top of the bumper cover / grill. Remove the push pins using a phillips screwdriver from the center of the cover by the hood latch.

Step 2

Use a 5.5mm socket to remove the three screws from the edge of both wheel well liners.

Step 3

Remove the three push pins from the bottom side of the bumper cover.

Step 4

Use a 5.5mm socket to remove the seven screws from the bottom of the bumper cover. Pull the bumper cover forward working from the sides, unplug all electrical connections, and set the bumper cover aside.

Proceed to step 7 for base plate installation.

FORD FLEX

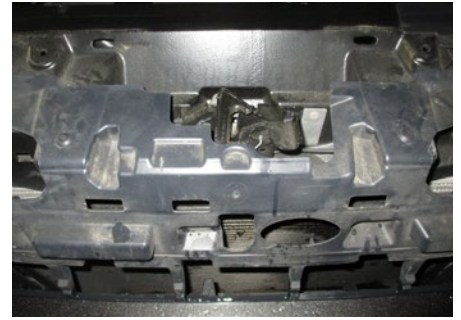
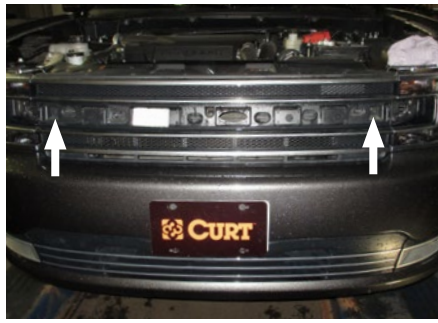
Step 1

Use a 10mm socket to remove the two screws from the top of the bumper cover / grille. Remove the two phillips-head push pins from the center of cover by the hood latch. Use a straight screwdriver to pop out the center chrome insert straight out from the grill.



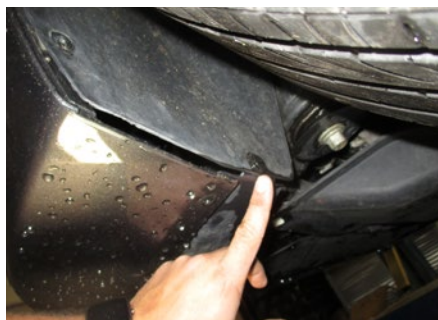
Step 2

Use a 10mm socket to remove the two screws from the grill housing. Remove the grill and set aside. From under the grill, remove the two push pins from around the hood latch.



Step 3

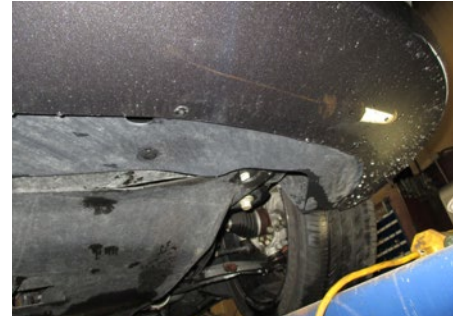
Use a 5.5mm socket to remove the three screws from the edge of both wheel well liners. On the lower edge of the wheel well liner, remove one push pin from each side of the vehicle.



Step 4

Use a 5.5mm socket to remove the screws from the bottom of the bumper cover. Pull the bumper cover outward working from the sides, unplug all electrical connections, and set the bumper cover aside.

Note: 2013 and older models will have eight screws while 2014 to present models will have seven screws.



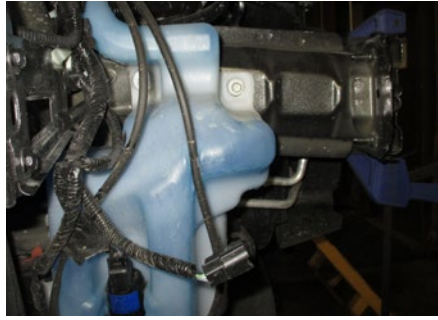
Step 5

On the driver side, use an 8mm socket to remove one bolt from the horn mount and set aside.



Step 6

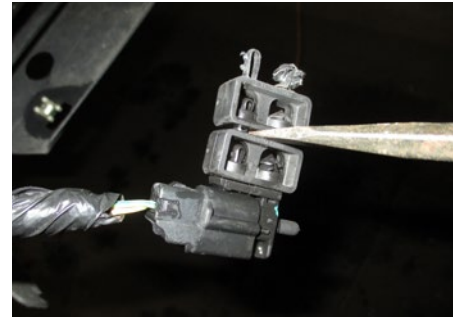
On the passenger side, use a 10mm socket to remove the three screws from the washer reservoir. There are two screws on the front and one on the back. Unhook the electrical lines and drain the fluid into a clean bucket. Pull the reservoir to the side.



TOW BAR BASE PLATE INSTALLATION

Step 7

Unclip the air temperature sensor from the bottom of the bumper. Remove the top spacer and reattach the sensor to the bumper with one spacer.



Step 8

Non-Active Shutters: Trim the plastic shrouding off below the bumper beam as needed for clearance on both sides of the vehicle.

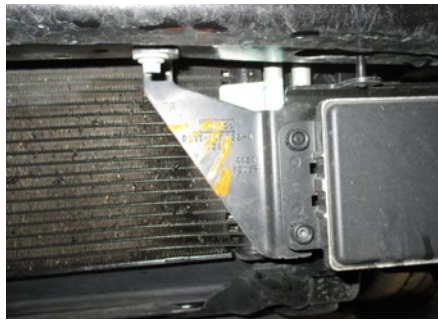
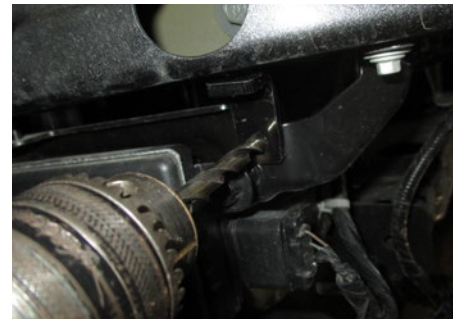
Active Shutters: Trim the plastic shrouding off below the bumper beam, along the face of the shutter, then back out to the front at the base as needed for clearance. Trim both sides of the vehicle. Trim off the center tab flush to the shutter face.



Step 9

Adaptive Cruise Control Models: On the driver side, place the 70135-ACCB bracket onto the bumper beam and ACC sensor bracket as shown. Mark and drill the holes with a 1/4" drill bit. Attach the bracket with supplied 1/4" hex bolts and flange nuts. Once installed, cut off the outer edge of the ACC bracket with a reciprocating saw.

Position the baseplate onto the frame as close to its installed position and mark the inward side of the ACC. bracket for trimming. Be mindful of the radiator if trimming the bracket on the vehicle.



Step 10

On the driver side, use a chisel or flat screwdriver, remove the weldnut inside of the bumper beam for handle nut clearance on step #13.

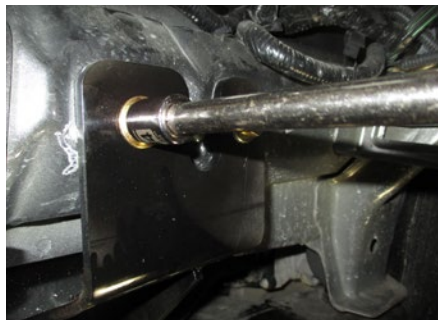
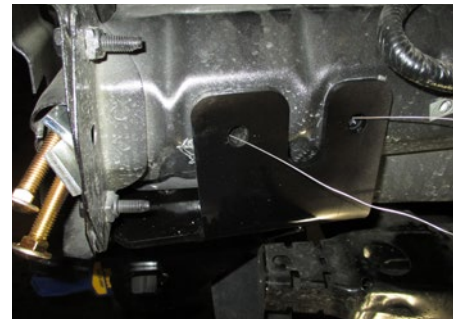
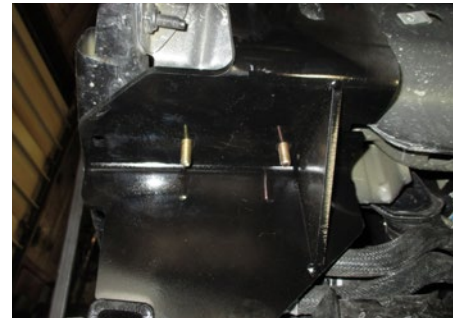
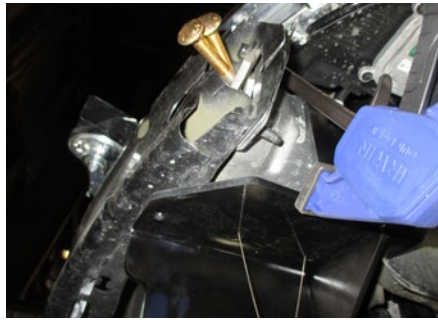


Step 11

Raise the baseplate onto the frame, level and clamp in position. Using a 13/32" drill bit, drill the rearward bottom four holes on the baseplate into the frame, two on each side.

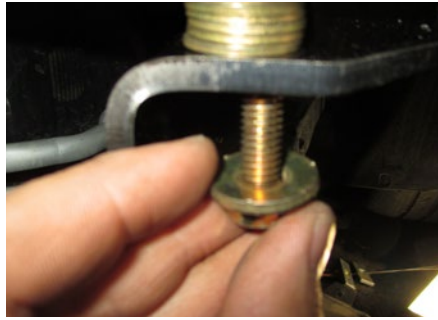
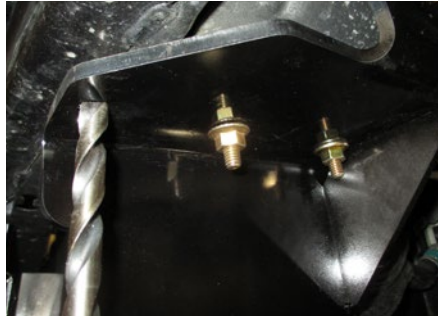
Fishwire 3/8" x 2-1/2" carriage bolts with spacers into the frame and install 3/8" flange nuts. Torque the 3/8" fasteners to 37 lb-ft.

Drill the holes on the vertical side of the side plate and install carriage bolts spacers and nuts in the same fashion as the other fasteners in this step and torque to 37 lb-ft.



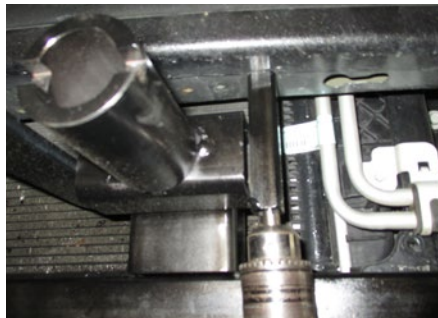
Step 12

Use a 13/32" drill bit to drill the bottom front hole on both sides of the vehicle. Install 3/8" x 2" bolts with lock washers into the holes using flat washers in between the baseplate and frame as spacers (approximately six per side) and 3/8" nut plates in the bumper



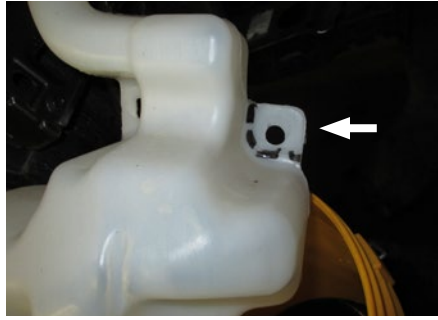
Step 13

With a 17/32" drill bit, drill a hole into the bumper using the small tubes as a guide. Install the long 1/2" bolts with flat and lock washers into the tube and 1/2" handle nut through the end of the bumper. Use 1/2" flat washers as need between the bumper and baseplate.



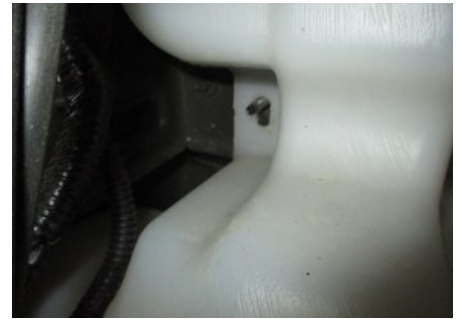
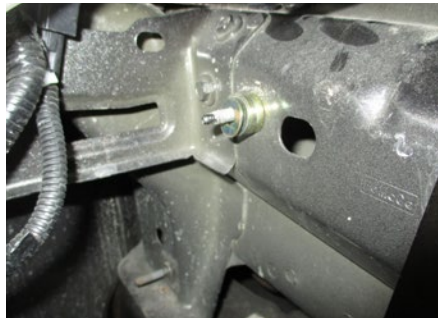
Step 14

Prior to reinstalling the washer reservoir, trim the front mounting tab off as needed.



Step 15

Reinstall the reservoir using seven 1/4" flat washers as needed on the upper rear hole to keep the baseplate from rubbing on the reservoir.



Step 16

Install the permanent safety cables, looping them around the vehicle frame and linking them to the tow bar base plate. There must be one cable on each side of the vehicle. Make sure the cables do not pinch or interfere with any hoses, wiring or other components (see Installing the Permanent Base Plate Safety Cables for additional information).



Step 17

To reinstall the horn, some slight bending may be necessary to clear baseplate. Hold the bumper cover as close to its original position, mark and trim the bumper cover as needed for baseplate clearance.

Note: Be sure nothing is installed in front of the ACC sensor as obstructions will affect accuracy of the sensor. Reinstall the bumper cover.



Final Installed Image



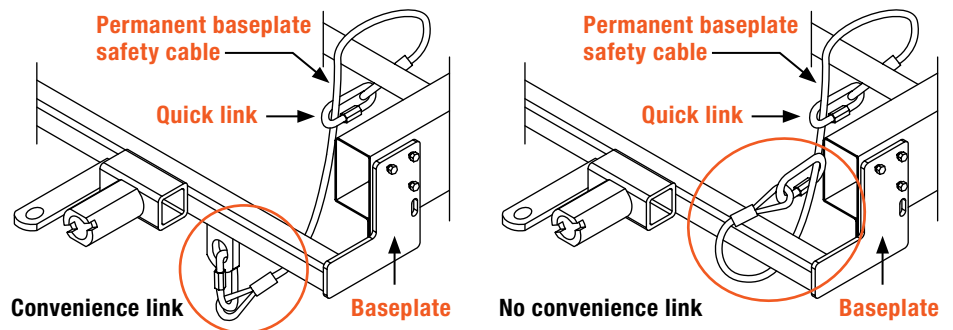
SAFETY CABLE INSTALLATION

Installing the Permanent Base Plate Safety Cables

When dinghy towing a vehicle with a tow bar, base plate safety cables should be used at all times. In the event of a disconnect, the safety cables are designed to help prevent complete vehicle separation. When installing the safety cables, use the illustrations below as a guide.

Installation guidelines

1. The cables must be connected to the base plate and the vehicle frame.
2. Two cables must be installed.
3. Each cable must meet or exceed the gross weight of the towed vehicle.
4. Make sure cables do not pinch or interfere with hoses, wiring or other components.



Note: Base plate safety cables are not a replacement for safety chains connecting the tow vehicle to the towed vehicle.

ADDITIONAL INFORMATION

Towing Tips

Check your equipment

Periodically check the condition of all towing equipment. Ensure all fasteners are tight and that all structural components are sound. Do not tow with worn or damaged parts.

Towing vehicle and trailer manufacturer's recommendations

Review the owner's manual for your towing vehicle and trailer for specific recommendations, capacities and requirements.