

INSTALLATION MANUAL

60698

Level of Difficulty

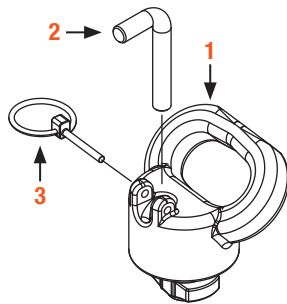
Easy

Weight Capacity

Gross trailer weight (GTW)	38,000 lbs.
Vertical load	9,500 lbs.

Parts List

Item	Qty	Description
1	2	Safety chain anchor
2	2	Pin, 12mm
3	2	Lynch pin, 5mm



Tools Required

None

Maintenance

When the anchors are not in use, remove them and store in a dry, clean area.

Keep the safety chain anchor pins and towing system lubricated regularly. Use silicone spray or equivalent to prevent wear and rust.

Place the puck system anchor hole covers (supplied by the truck manufacturer) into the puck system holes when the anchors are removed to keep dirt and debris out.

Failure to maintain the towing system could result in poor performance and / or failure.

⚠ WARNING

Never exceed the vehicle manufacturer's recommended towing capacity.

Vehicle performance (braking, handling, acceleration, turning radius) can be drastically affected by a trailer. Allow additional time and space for stopping, changing lanes, passing and turning.

Product Photo



⚠ CAUTION

Severe bumps can damage the towing system. Avoid or drive slowly over rough terrain. Do not tow more than one trailer at a time. This may cause loss of control.

NOTICE

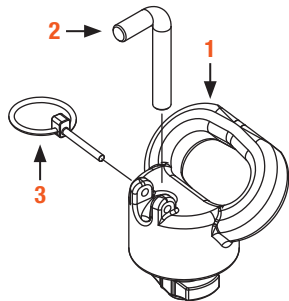
Before you begin installation, read all instructions thoroughly.

Product Registration and Warranty

CURT Group stands behind our products with industry-leading warranties. Provide feedback and help us to improve our products by registering your purchase at: warranty.curtgroup.com/surveys

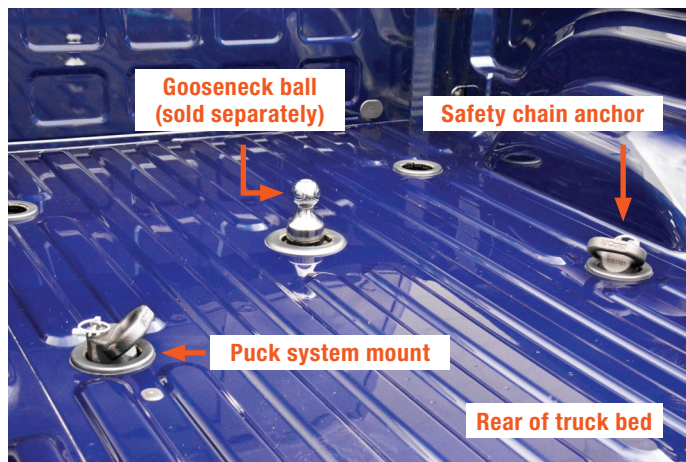
Parts List

Item	Qty	Description
1	2	Safety chain anchor
2	2	Pin, 12mm
3	2	Lynch pin, 5mm



Properly Installed System

Always install both safety chain loops in the rear-most puck system mounts.



Installation

Insert both safety chain anchors (#1) into the rear-most truck bed puck system mounts.

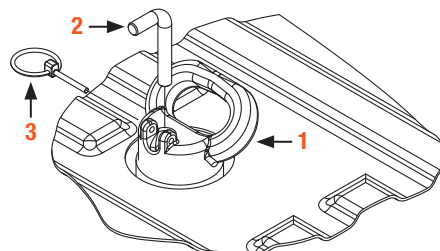
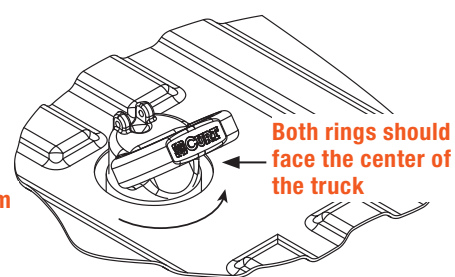
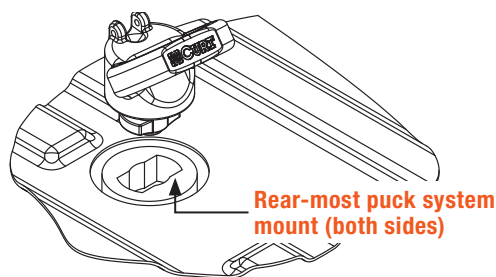
Note: Always install in the rear-most mounts.

Once inserted, rotate the anchors 90° toward the center of the truck.

Insert a 12mm pin (#2) into the top of each safety chain anchor and secure using the provided 5mm lynch pins (#3).

Note: The 12mm pins and 5mm lynch pins must be fully inserted and engaged.

When the safety chain anchors are not in use, remove them from the truck bed mounts and store in a dry, clean area.



Towing Tips

Driving a tow vehicle

Verify adequate turning clearance between the truck cab / box corners and trailer(s).

Verify the trailer safety chain length. Too much slack in the chain may prevent maintaining control in the event of separation. Leave only enough slack to allow full turning without interference.

Check your equipment

Periodically check the condition of all towing equipment. Ensure all fasteners are tight and that all structural components are sound. Do not tow a trailer with worn or damaged parts.

Verify all anchors are properly installed, secured with lynch pins, and the trailer attachments to the safety chain anchors are secure (cannot be shaken free during towing).

Check truck box clearance. There should be a minimum clearance of 6" between the bottom of the trailer's overhang and the top of the box sides.

Ensure the safety chains and hooks are rated to the load capacity of the trailer.

Trailer loading

Proper trailer loading is very important.

Heavy items should be placed close to the floor near the trailer axle center line. The load should be balanced side to side and firmly secured in the trailer to prevent shifting. Tongue weight should be 10-15% or the gross trailer weight for most trailers. Too low of a tongue weight often produces tendency to sway.

Never load the trailer heavier behind the trailer axle(s).