

RV TOW Harness Wiring Kit

INSTALLATION INSTRUCTIONS

Fits: Chevrolet Colorado
GMC Canyon

Kit Includes:

- (1) Wiring Harness with 4-Flat Connector
- (1) 48" 4-Flat Extension
- (20) 15" Cable Tie
- (1) 4-Flat Bracket
- (3) #8 Self-Tapping Ground Screw

RV TOW HARNESS INSTALLATION INSTRUCTIONS

1. Read instructions thoroughly before beginning.

2. Locate vehicle's factory wire harness connectors underneath vehicle mounted on the rear frame rail. Driver side will have 6-pin connectors, shown in **Figure 1**, and Passenger side will have 5-pin connectors, shown in **Figure 2**, identical to those on RV Harness. Unplug connectors and inspect for dirt and debris and clean if necessary.



Figure 1



Figure 2

3. Starting on driver's side, position RV harness with connectors containing Yellow wires between separated vehicle harness connectors shown in **Figure 1**. Press connectors firmly into vehicle connectors until they lock into place. Pull on connectors to ensure the locks are engaged.

4. Locate a clean and accessible mounting location on the vehicle near the RV harness ends within reach of white wire and ring terminal. Remove any debris or undercoating to expose a clean metal surface and drill a 3/32" hole.

Caution: Take care not to drill through the body or any exposed surface.

5. Attach ring terminal on the White wire using the ground screw provided.

6. Route the portion of harness with the T-Connector ends containing Green wire to the Passenger side along factory wire harness that routes along rear frame rail and secure with the cable ties provided. Repeat Step 3 for connector plugging.

7. Cut the cable ties on 4-Flat portion of harness. Starting at rear of vehicle route along the factory wire harness shown in **Figure 3** until you reach the front driver's side wheel well.

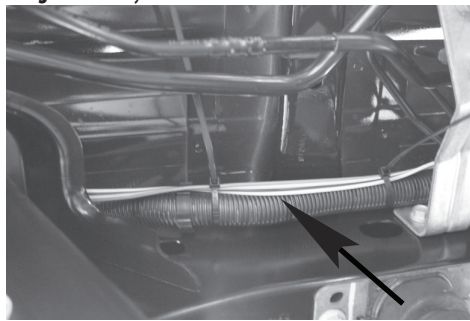


Figure 3

Caution: Make sure to avoid areas that contain moving parts or could cut, pinch or burn the wires when routing the 4-flat harness towards the front of the vehicle. Also avoid routing harness near the fuel lines as it may cause the fuel to ignite.

Failure to follow these warnings may cause property damage, personal injury or loss of life.

8. Remove clips on the driver's side wheel cover shown in **Figure 4**. Starting at the left side of front driver's side wheel well route a fish tape up and over to the right side. Secure the 4-Flat connector to it and pull through the wheel well cover.

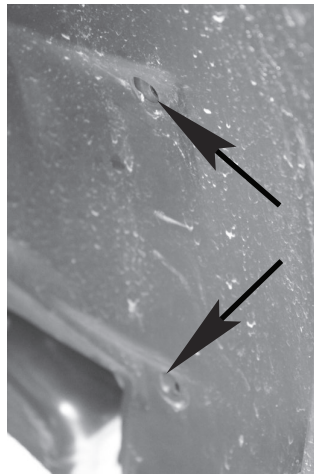


Figure 4

9. Route the 4-Flat from the driver's side wheel well area into the engine compartment along driver's side wall and find a suitable location to mount 4-Flat bracket shown in **Figure 5**. Using bracket as a template mark the two holes and drill two 3/32" holes and attach the bracket using two remaining screws.

Caution: Take care not to drill through the body or any exposed surface.

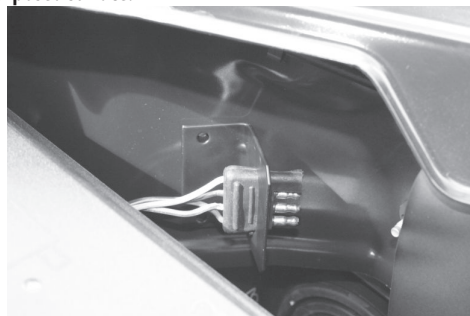


Figure 5

10. With the 4-flat extension plugged into the RV harness on one end and the motorhome on the other, test that the functions work on the Chevrolet Colorado/GMC Canyon. These functions will only work on the brake/tail combination lamp.

4-Flat Harness Color Code:

White - Ground
Brown - Tail Lights
Green - Right Turn and Brake Signal
Yellow - Left Turn and Brake Signal

When not in use store the 4-flat extension in the vehicles glove box.

11. At the rear of the vehicle secure any loose wires to the vehicle's crossmember using cable ties provided.

NOTE: THIS RV HARNESS ALSO INCLUDES A CONNECTION POINT LABELED "FOR TRAILER TOW USE ONLY: 4-FLAT HARNESS REQUIRED." IF YOU DECIDE TO LEAVE YOUR RV HARNESS ON THE VEHICLE AT ALL TIMES AND WANT TO TOW A TRAILER SIMPLY PLUG IN CONVERTER AND 4-FLAT HARNESS PART NUMBER 58919 AND YOU'RE READY TO TOW.