

INSTALLATION MANUAL

Level of Difficulty

Easy

Installation difficulty levels are based on time and effort involved and may vary depending on the installer level of expertise, condition of the vehicle and proper tools and equipment.

Tools Required

Ratchet	Wire cutters
Socket, 10mm	Test light

⚠ WARNING

Do not exceed product rating or tow vehicle lamp load rating, whichever is lower.

The battery connection must be fuse-protected. Exceeding the product rating can cause loss of warranty, overheating and potential damage.

Product Photo



NOTICE

Before you begin installation, read all instructions thoroughly.

Proper tools will improve the quality of installation and reduce the time required.

All steps must be followed to ensure the product will function properly. Once installed, test for proper function by using a test light or connecting a properly wired trailer.

Maintenance

Periodic inspection of all wires and connections should be performed to ensure there is no visible damage or loose connections.

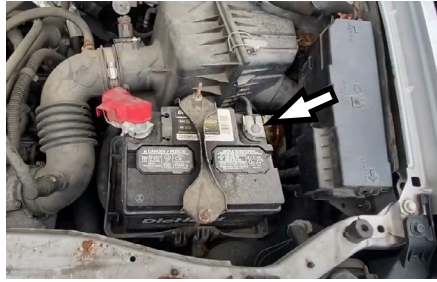
Step 1

Open the hood and locate the negative battery post.

Using a 10mm socket, remove the negative battery terminal and isolate it to prevent the terminal making contact with a metal object creating a ground.

CAUTION

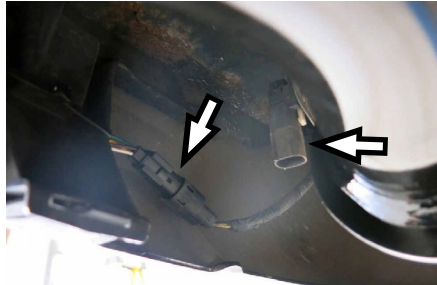
Grounding of the negative cable to a metal item could cause damage to the vehicles electrical system.



Step 2

On the driver side, underneath the vehicle, locate the factory trailer tow harness connector.

Remove the protective plug, being careful to not damage connector mounting tabs, and set it aside.



Step 3

Insert the trailer tow harness into the mating vehicle connector, being careful to not break or damage the connector tabs.

Step 4

Route the 4-way flat connector along the rear bumper fascia and over to the center of the vehicle. Secure 4-way connector into a bracket (not included). Secure any loose wires with the provided cable ties.

Step 5

Reconnect the negative battery terminal. Install the provided 4-flat dust cover to help prevent corrosion. Reinstall all removed items in the reverse order of disassembly to complete install.

NOTICE

Once the T-Connector harness has been installed, verify that the harness is functioning by attaching the battery and testing with a test light, 4-flat tester, multimeter, or a functioning trailer.