

# INSTALLATION MANUAL

## Level of Difficulty

Easy

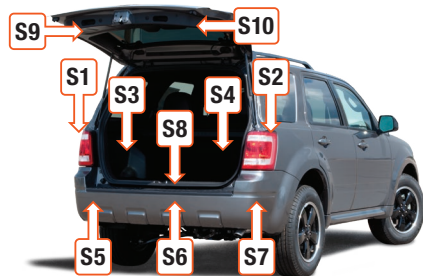
Installation difficulty levels are based on time and effort involved and may vary depending on the installer level of expertise, condition of the vehicle and proper tools and equipment.

## Wiring Location(s)

S5

## Wiring Location Guide\* for SUVs and Vans (S)

S1	Behind driver side taillight housing
S2	Behind passenger side taillight housing
S3	Behind driver side rear access panel
S4	Behind passenger side rear access panel
S5	Behind driver side rear bumper
S6	Behind center of rear bumper
S7	Behind passenger side rear bumper
S8	Under rear floor panel
S9	Behind driver side rear access panel
S10	Behind passenger side rear access panel



\* Representative vehicle shown

## Tools Required

Ratchet	Socket, 15mm
Utility knife	Panel trim removal tool

## WARNING

Do not exceed product rating or tow vehicle lamp load rating, whichever is lower.

Be sure not to lay tools across the positive (typically noted with red covers or a red '+' symbol). This can cause a ground to short causing sparks and / or electrical shocks.

## Product Photo



## Hardware Photo



## NOTICE

Before you begin installation, read all instructions thoroughly.

Proper tools will improve the quality of installation and reduce the time required.

All steps must be followed to ensure the product will function properly. Once installed, test for proper function by using a test light or connecting a properly wired trailer.

## Maintenance

Periodic inspection of all wires and connections should be performed to ensure there is no visible damage or loose connections.

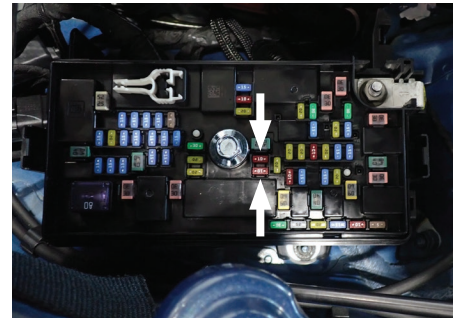
### Step 1

Locate the vehicle battery in the engine compartment on the driver side and disconnect the negative battery terminal. Be sure to fasten this wire down and away from the battery while completing the installation process.



### Step 2

Locate the vehicle fuse panel on the driver side under the hood. Press the four (4) release tabs to release the cover and lift it straight up. Verify that the two (2) red 10-amp fuses are installed in the fuse box. If they are missing, install the fuses provided in the custom wiring harness kit.

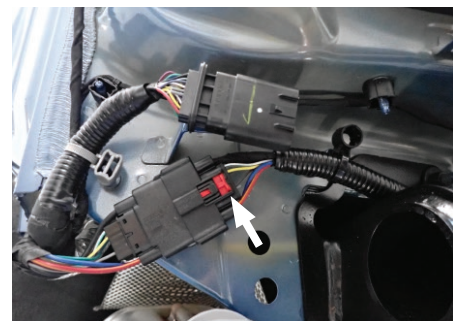
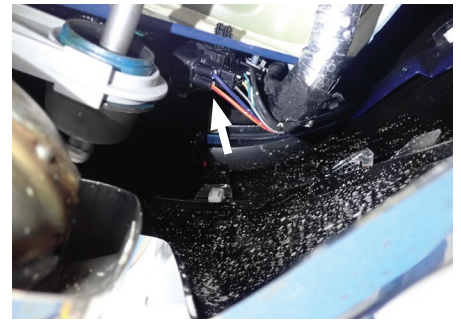


### Step 3A (With rear bumper in place)

Starting at the rear of the vehicle on the driver side, remove the panel that conceals the hitch and electrical harness. Locate the harness above the exhaust hanger.

If it is not possible to access the harness connector from below the bumper with the exhaust hanger in place, use a 15mm socket to remove the two (2) mounting bolts on the exhaust hanger to access the connector.

Remove the dust cover and disconnect the old harness if necessary by pressing the red locking tab to the rear of the housing until it clicks. Press down on the housing lock and pull it away from mating connector.



### Step 3B (With bumper removed)

If the rear bumper was removed to install the harness and hitch, locate the harness and remove the dust cover (release the red locking tab to the rear of the housing feel a click). Press down on the housing lock and pull away from the mating connector.



### Step 4

Route the custom harness from the driver side along the hitch to the center of the vehicle and mount it near the receiver hitch.



### Step 5

If it was disconnected at the beginning of the installation, reconnect the negative battery terminal.

#### **NOTICE**

Once 12 volt power wire is connected to the harness verify that the harness is functioning by attaching the battery and testing with a test light or a functioning trailer.

Use cable ties as needed to keep the custom harness mounted in place.

Reinstall all items removed during install. Install the provided dust cover to help prevent corrosion.