

INSTALLATION MANUAL

Level of Difficulty

Difficult

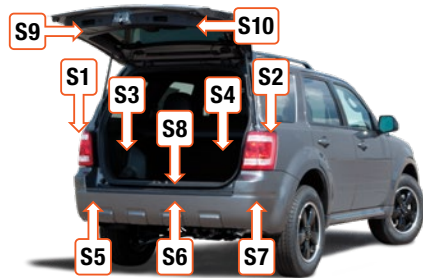
Installation difficulty levels are based on time and effort involved and may vary depending on the installer level of expertise, condition of the vehicle and proper tools and equipment.

Wiring Location(s)

S5

Wiring Location Guide* for SUVs and Vans (S)

S1	Behind driver side taillight housing
S2	Behind passenger side taillight housing
S3	Behind driver side rear access panel
S4	Behind passenger side rear access panel
S5	Behind driver side rear bumper
S6	Behind center of rear bumper
S7	Behind passenger side rear bumper
S8	Under rear floor panel
S9	Behind driver side rear access panel
S10	Behind passenger side rear access panel



* Representative vehicle shown

Tools Required

Ratchet	Panel trim removal tool
Socket, 10mm	Insulating gloves
Wrench, 10mm	Flathead screwdriver
Torx bit, T-25	--

⚠ WARNING

Do not exceed product rating or tow vehicle lamp load rating, whichever is lower.

Be sure not to lay tools across the positive (typically noted with red covers or a red '+' symbol). This can cause a ground to short causing sparks and / or electrical shocks.

Product Photo



Hardware Photo



NOTICE

Before you begin installation, read all instructions thoroughly.

Proper tools will improve the quality of installation and reduce the time required.

For ease of installation, it is recommended to install the wiring harness the same time as the trailer hitch installation.

All steps must be followed to ensure the product will function properly. Once installed, test for proper function by using a test light or connecting a properly wired trailer.

Insulating gloves help protect from shock and electrocution when working on live circuitry.

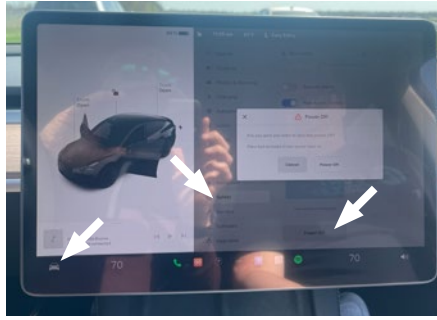
Maintenance

Periodic inspection of all wires and connections should be performed to ensure there is no visible damage or loose connections.

Step 1

Open the driver door and the vehicle hood. Leave the door and hood open to force recalibration for the windows and doors. On the front touchscreen inside the vehicle, select the small car icon in the lower left corner. Select 'Safety and Security' then 'Power Off'. Confirm power off on the pop-up dialog.

This powers off the MCU (Main Computer Unit).



Step 2

From under the hood, remove the upper hood cover. Locate the large red wire with the orange and black tag attached. Locate the black housing and release the lock by pulling the red tab on the secondary lock on the back of the housing. **Note:** The red secondary lock can be brittle and break the tab.

Press the primary locking tab to separate the housing.



Step 3

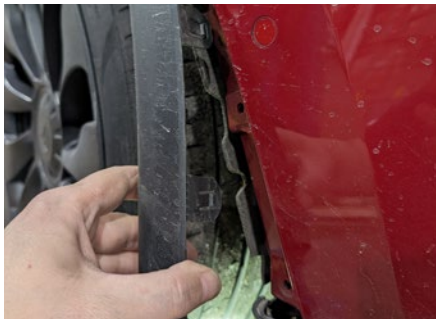
Remove the large, rearmost underbody panel by removing eleven screws using a 10mm socket and a T-25 Torx bit. Use a screwdriver or trim tool to remove the three plastic push fasteners along the outer edges of the panel and the four push fasteners along the lower edge of the wheel well liner securing it to the underbody panel.



Step 4

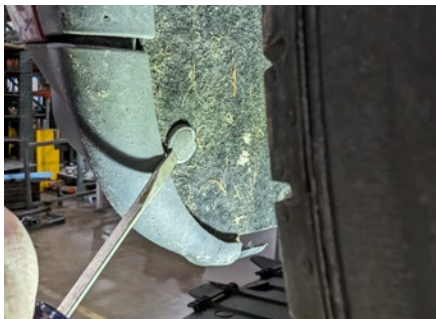
Begin to loosen the wheel well trim by using a plastic trim pry tool to remove two clips from the lower end and four along the side.

Repeat on the other side of the vehicle.



Step 5

To loosen the wheel well liners, remove the plastic fastener in the middle of the liner by hand.



Step 6

Remove one bolt per side behind the wheel well liner with a 10mm socket.



Step 7

Open the rear hatch of the vehicle and remove the carpet panel. Carefully pry between the trunk panel and rubber trim to remove the trunk panels and gain access to the taillight wiring connector and fasteners. Once accessed, remove the two nuts with a 10mm socket and unclip the taillight wiring for each taillight.



Step 8

Remove the one bolt under each taillight opening securing it to the bumper cover.

Working from the wheel well towards the center of the bumper, carefully unclip the edge of the bumper cover using a plastic pry tool if necessary. Once unclipped, reach behind the passenger side of the cover and unclip any wiring for sensors that may be present. Place the bumper cover in a location so as not to be damaged during the rest of the installation.



Step 9

Locate the custom wiring harness on the driver side of the vehicle attached to the sensor bar. This connector will mate to the T-connector harness. Insert the connector and lock into place.

Note: Protective cap on the connector may need to be removed before insertion of T-Connector harness.



Step 10

Route the harness to the hitch area along the rear bumper using the provided cable ties to secure the harness under the vehicle next to the receiver hitch.



Step 11

Reinstall the battery loop disconnected from step 2. Verify that the harness is functioning by attaching the battery and testing with a test light, 4-flat tester or a functioning trailer.

Reinstall all items removed during install. If it was disconnected at the beginning of the installation, reconnect the negative battery terminal. Install the provided 4-flat dust cover to help prevent corrosion.



Step 12

Complete the trailer hitch installation steps or reassemble the vehicle in the reverse of the disassembly, making sure to check that all wiring is assembled and functioning properly.