

INSTALLATION MANUAL

Level of Difficulty

Easy

Installation difficulty levels are based on time and effort involved and may vary depending on the installer level of expertise, condition of the vehicle and proper tools and equipment.

Electrical Ratings

Signal circuits	3.0-amps per side
Tail / Running Circuits	6.0-amps total

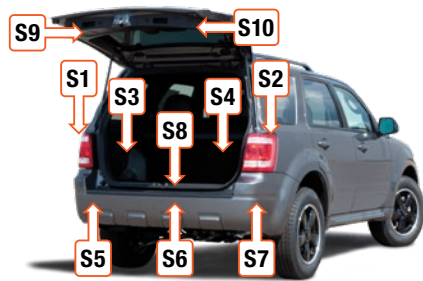
Check vehicle owner's manual or contact the vehicle manufacturer for more information.

Wiring Location(s)

S1, S5, S7

Wiring Location Guide* for SUVs and Vans (S)

S1	Behind driver side taillight housing
S2	Behind passenger side taillight housing
S3	Behind driver side rear access panel
S4	Behind passenger side rear access panel
S5	Behind driver side rear bumper
S6	Behind center of rear bumper
S7	Behind passenger side rear bumper
S8	Under rear floor panel
S9	Behind driver side rear access panel
S10	Behind passenger side rear access panel



* Representative vehicle shown

Tools Required

Ratchet	Crimping tool
Socket, 10mm	Wire strippers
Panel trim removal tool	Wire cutters
Cutting tool	--

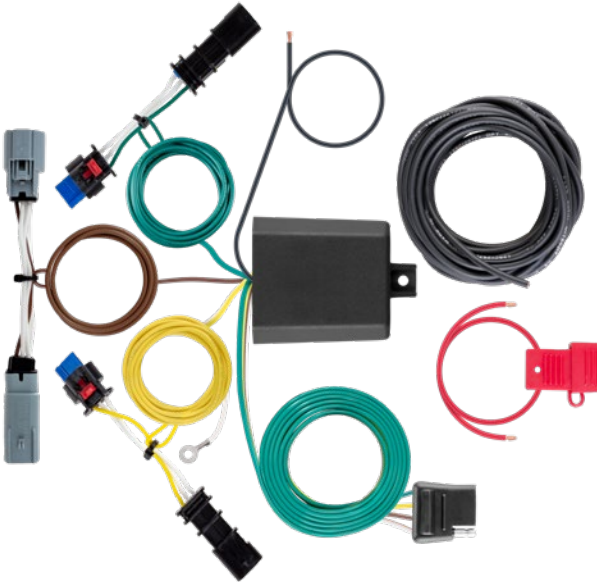
⚠ WARNING

Do not exceed product rating or tow vehicle lamp load rating, whichever is lower.

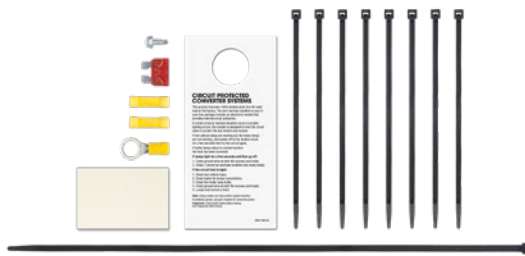
Be sure not to lay tools across the positive (typically noted with red covers or a red '+' symbol). This can cause a ground to short causing sparks and / or electrical shocks.

The battery connection must be fuse-protected, 10-amp max. Exceeding the product rating can cause loss of warranty, overheating and potential fire.

Product Photo



Hardware Photo



NOTICE

Before you begin installation, read all instructions thoroughly.

Proper tools will improve the quality of installation and reduce the time required.

All steps must be followed to ensure the product will function properly. Once installed, test for proper function by using a test light or connecting a properly wired trailer.

Maintenance

Periodic inspection of all wires and connections should be performed to ensure there is no visible damage or loose connections.

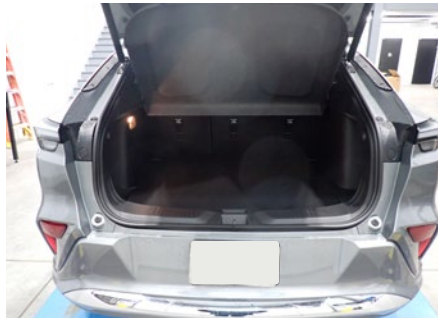
Step 1

Locate the vehicle battery on the driver side under the hood. Disconnect the negative battery terminal. Be sure to fasten this wire down and away from the battery when completing the installation process.



Step 2

Remove the floor board, exposing the spare tire. Use a panel trim removal tool to loosen the threshold and remove straight up.



Step 3

Use a 10mm socket to remove the cargo hold-downs. Use a trim tool to loosen the side wall trim on both sides of the vehicle.



Step 4

Starting on the driver side in between the body and the wall panel, locate the taillight housing secured with push fasteners to the side wall.

Locate and separate the connectors. The connectors will be similar to those on your new custom wiring product. Separate the connectors from the taillight housing taking care not to damage the locking tabs. Release the external red lock on the connectors by moving the red tab towards the housing wire. The internal lock needs to be pressed in to unlock the housings.

Note: The housings tend to release easier if you push the housings together, and press the lock release until it clicks and pull the housing apart.

Install the yellow wire in between the disconnected factory wiring.



Step 5

Route the green, brown and 4-flat wire along the back wall of the vehicle under the threshold. Route to the center of the vehicle with only the green wire continuing to the passenger side wall and. Repeat step 4 with the green wire, locating the taillight housing and installing it between the factory wiring.



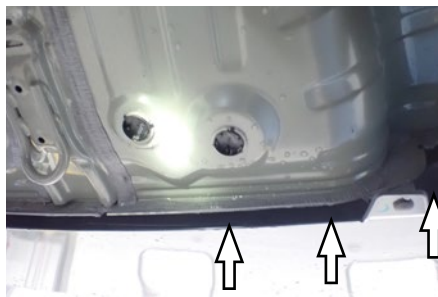
Step 6

Locate the rubber grommet in the rear of the trunk hatch on the driver side. Remove the grommet and route the brown and 4-flat wire outside the vehicle.



Step 7

From under the vehicle, locate the brown and 4-flat wire fed through the grommet opening. Route the brown wire to the driver side. Locate the housing to the taillight and install the brown wire in between the factory wiring.



Step 8

Route the 4-flat to the center of the vehicle near the receiver hitch.

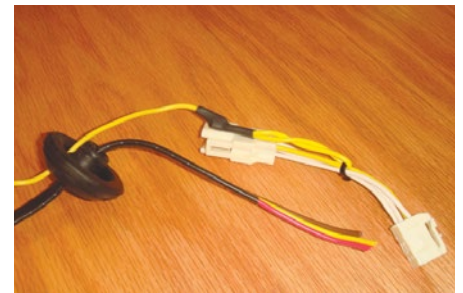


Step 9

Locate the grommet behind the taillight where the vehicle taillight wiring passes through from inside the cabin to the taillight. Remove the grommet and cut a slit large enough to route the new custom wiring end through.

Insert the custom wiring end with brown and red wires between the separated connectors. Make sure the connectors are fully inserted with locking tabs in place.

Reseat the grommet. Use the provided sealant to seal the cut in the grommet and around all the wires.



Step 10

Mount the converter with double-sided tape, on the driver's side trunk area behind the side wall panel.

Locate a grounding point such as an existing screw or bolt in the frame of the vehicle or drill a 3/32" pilot hole. The area should be free from rust, dirt, and paint (abrasive pad/paper to remove rust and paint). Secure the white ground wire with the ring terminal on the existing fastener or with the provided ground screw.

CAUTION

Check for miscellaneous items that may be hidden behind or under any surface before drilling to avoid damage and/or personal injury.



Step 11

Route the black power wire from the vehicle battery as shown on the provided 'Powered Converter Lead Instruction Sheet' on the last page of this manual.

NOTICE

Once 12 volt power wire is connected to the harness verify that the harness is functioning by attaching the battery and testing with a test light, 4-flat tester or a functioning trailer.

Secure the green, brown, and 4-flat wires with provided cable ties. Reinstall all items removed during install. If it was disconnected at the beginning of the installation, reconnect the negative battery terminal. Install the provided 4-flat dust cover to help prevent corrosion.

POWERED CONVERTER LEAD INSTRUCTION SHEET

FICHE DE CONSIGNES DU CONVERTISSEUR D'ALIMENTATION

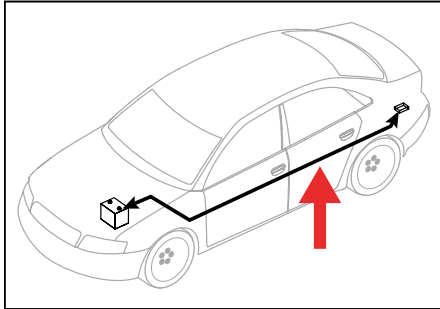
HOJA DE INSTRUCCIONES DEL CONDUCTOR DEL ADAPTADOR ALIMENTADO POR BATERÍA

NOTICE AVIS / AVISO

Illustrations are for reference only. Battery location may differ depending on the vehicle.

Les images ne sont fournies qu'à des fins de référence. L'emplacement de la batterie peut varier en fonction du véhicule.

Las ilustraciones son solo para referencia. La ubicación de la batería puede variar según el vehículo.



WARNING AVERTISSEMENT / ADVERTENCIA

Route 12 GA wire to vehicle battery location, taking care to avoid any pinch points and hot or rotating components.

Acheminer le câble de calibre 12 à la batterie du véhicule en prenant soin d'éviter les points de pincement et les éléments chauds ou pivotants.

Pase el cable calibre 12 hacia la ubicación de la batería del vehículo, con cuidado de evitar atascos y componentes calientes o giratorios.

WARNING AVERTISSEMENT / ADVERTENCIA

To avoid personal injury or property damage, check for miscellaneous items that may be behind or under any surface before drilling.

Pour éviter les blessures et les dommages matériels, vérifier les divers articles qui peuvent se trouver derrière ou sous la surface avant de percer.

Para evitar lesiones personales o daños materiales, verifique que no haya ningún elemento detrás o debajo de la superficie antes de perforar.

NOTICE AVIS / AVISO

1. This converter system is to be used only on 12 volt negative ground systems.
2. Secure power wire to vehicle chassis using cable ties provided.
3. When passing the power wire through sheet metal, use an existing grommet, add a grommet or use silicone to protect the power wire from sharp edges.
4. Overall T-connector design may differ from illustration. The illustration should be used for power lead instruction only. Illustration is not to scale.

1. Ce système de convertisseur ne doit être utilisé qu'avec une prise de masse de polarité négative de 12 volts.
2. Fixer le câble d'alimentation au châssis du véhicule à l'aide des courroies d'attache de câble fournies.
3. Utiliser un œillet existant, ajouter un œillet ou appliquer du silicone pour protéger le câble d'alimentation des rebords tranchants au moment de le passer à travers la tôle.
4. La disposition générale du connecteur en T peut différer de l'illustration. Celle-ci ne doit être utilisée que pour le convertisseur d'alimentation. L'illustration n'est pas à l'échelle.

1. Este sistema de adaptadores solo se debe utilizar con sistemas con polo negativo a masa de 12 voltios.
2. Sujete el cable de alimentación al chasis del vehículo utilizando los sujetacables suministrados.
3. Al pasar el cable de alimentación por la lámina de metal, utilice la arandela pasacable existente, agregue una arandela pasacable o utilice silicona para proteger el cable de alimentación de los bordes filosos.
4. El diseño general del conector T puede ser distinto de la ilustración. La ilustración solo se debe utilizar para la instrucción del conductor de alimentación. La ilustración no está a escala.

