

INSTALLATION MANUAL

Level of Difficulty

Easy

Installation difficulty levels are based on time and effort involved and may vary depending on the installer level of expertise, condition of the vehicle and proper tools and equipment.

Electrical Ratings

| | |
|-------------------------|-------------------|
| Signal circuits | 3.0-amps per side |
| Tail / Running Circuits | 6.0-amps total |

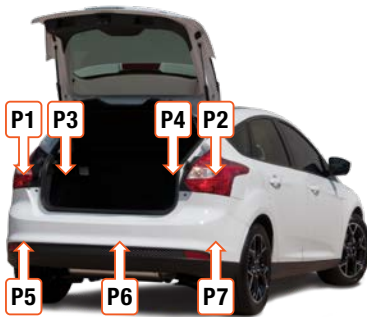
Check vehicle owner's manual or contact the vehicle manufacturer for more information.

Wiring Location(s)

P1 and P2

Wiring Location Guide* for Passenger Cars (P)

| | |
|----|---|
| P1 | Behind driver side taillight housing, outside of trunk |
| P2 | Behind passenger side taillight housing, outside of trunk |
| P3 | Behind driver side taillight housing, inside of trunk |
| P4 | Behind passenger side taillight housing, inside of trunk |
| P5 | Behind driver side rear bumper |
| P6 | Behind center of rear bumper |
| P7 | Behind passenger side rear bumper |



* Representative vehicle shown

Tools Required

| | |
|----------------------------|-------------------------|
| Ratchet | Wire cutter |
| Socket, Torx T-27 | Wire stripper |
| Small flathead screwdriver | Panel trim removal tool |
| Fish wire | Crimp tool |

⚠ WARNING

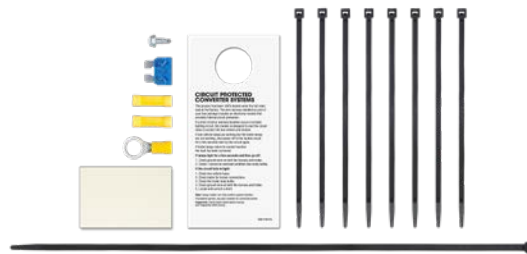
Do not exceed product rating or tow vehicle lamp load rating, whichever is lower.

The battery connection must be fuse-protected, 15-amp max. Exceeding the product rating can cause loss of warranty, overheating and potential fire.

Product Photo



Hardware Photo



NOTICE

Before you begin installation, read all instructions thoroughly.

Proper tools will improve the quality of installation and reduce the time required.

All steps must be followed to ensure the product will function properly. Once installed, test for proper function by using a test light or connecting a properly wired trailer.

Maintenance

Periodic inspection of all wires and connections should be performed to ensure there is no visible damage or loose connections.

Step 1

Locate the vehicle battery. Look up the battery location in the owner's manual of your vehicle. Disconnect the negative battery terminal. Be sure to fasten this wire down and away from the battery when completing the installation process.



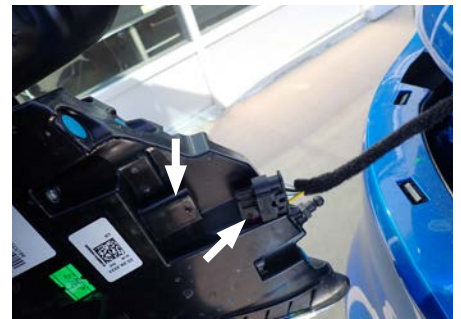
Step 2

Open the vehicle hatch. Using a small flathead screwdriver, open the taillight fastener covers. Use a T-27 torx tool to remove the two fasteners from both taillights.



Step 3

Remove the taillight by pulling straight back from the taillight cavity. Once removed from the vehicle, flip the light over and separate the connectors from the taillight housing taking care not to damage the locking tabs. Set the taillight off to the side and repeat on the other side of the vehicle.



How to Fishwire

A) Fish wire is a way to push or pull an electrical wire through a blind hole. Make sure the wire is long enough to stick out on the other side.

Insert the fish wire through the blind hole and locate it on the other side.

B) Use tape to secure the harness to the fish wire and pull back up.

The fish wire or harness may get hung up on something, if this happens you may have to push back down, wiggle it around or twist the wire to loosen it from what it's hung up on.

Fish wire could be anything from a cut-up wire hanger, stiff wire, rope or string depending on what is needed for the installation.



Step 4

Starting on the driver side, use a fish wire run it down in the cavity until the end of the fish wire is located. Attach the side of the harness with the yellow wire to the fish wire and carefully pull up and attach to the factory side of the harness.



Step 5

Route the green wire over to the passenger side, securing with cable ties as needed.

Repeats 4 with the green wire.



Step 6

Attach the taillights to the custom harness and set in place.

Step 7

On the driver side, locate a flat spot up in the bumper cover. Adhere the black converter box using the provided double-sided tape and/or cable tie.

Step 8

Route the black power wire from the vehicle battery as shown on the provided 'Powered Converter Lead Instruction Sheet' on the last page of this manual.

NOTICE

Once 12 volt power wire is connected to the harness verify that the harness is functioning by attaching the battery and testing with a test light, 4-flat tester or a functioning trailer.

Route the 4-flat to the center of the vehicle next to the hitch. Secure any loose wires with the provided cable ties.

Reinstall all items removed during install. If it was disconnected at the beginning of the installation, reconnect the negative battery terminal. Install the provided 4-flat dust cover to help prevent corrosion.

POWERED CONVERTER LEAD INSTRUCTION SHEET

FICHE DE CONSIGNES DU CONVERTISSEUR D'ALIMENTATION

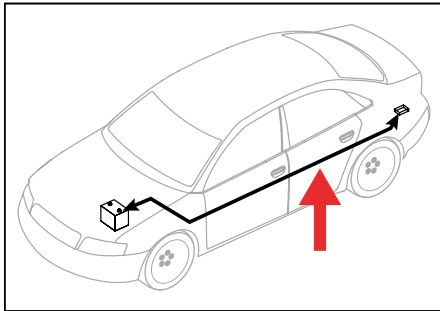
HOJA DE INSTRUCCIONES DEL CONDUCTOR DEL ADAPTADOR ALIMENTADO POR BATERÍA

NOTICE AVIS / AVISO

Illustrations are for reference only. Battery location may differ depending on the vehicle.

Les images ne sont fournies qu'à des fins de référence. L'emplacement de la batterie peut varier en fonction du véhicule.

Las ilustraciones son solo para referencia. La ubicación de la batería puede variar según el vehículo.



WARNING AVERTISSEMENT / ADVERTENCIA

Route 12 GA wire to vehicle battery location, taking care to avoid any pinch points and hot or rotating components.

Acheminer le câble de calibre 12 à la batterie du véhicule en prenant soin d'éviter les points de pincement et les éléments chauds ou pivotants.

Pase el cable calibre 12 hacia la ubicación de la batería del vehículo, con cuidado de evitar atascos y componentes calientes o giratorios.

WARNING AVERTISSEMENT / ADVERTENCIA

To avoid personal injury or property damage, check for miscellaneous items that may be behind or under any surface before drilling.

Pour éviter les blessures et les dommages matériels, vérifier les divers articles qui peuvent se trouver derrière ou sous la surface avant de percer.

Para evitar lesiones personales o daños materiales, verifique que no haya ningún elemento detrás o debajo de la superficie antes de perforar.

NOTICE AVIS / AVISO

1. This converter system is to be used only on 12 volt negative ground systems.
2. Secure power wire to vehicle chassis using cable ties provided.
3. When passing the power wire through sheet metal, use an existing grommet, add a grommet or use silicone to protect the power wire from sharp edges.
4. Overall T-connector design may differ from illustration. The illustration should be used for power lead instruction only. Illustration is not to scale.

1. Ce système de convertisseur ne doit être utilisé qu'avec une prise de masse de polarité négative de 12 volts.
2. Fixer le câble d'alimentation au châssis du véhicule à l'aide des courroies d'attache de câble fournies.
3. Utiliser un œillet existant, ajouter un œillet ou appliquer du silicone pour protéger le câble d'alimentation des rebords tranchants au moment de le passer à travers la tôle.
4. La disposition générale du connecteur en T peut différer de l'illustration. Celle-ci ne doit être utilisée que pour le convertisseur d'alimentation. L'illustration n'est pas à l'échelle.

1. Este sistema de adaptadores solo se debe utilizar con sistemas con polo negativo a masa de 12 voltios.
2. Sujete el cable de alimentación al chasis del vehículo utilizando los sujetacables suministrados.
3. Al pasar el cable de alimentación por la lámina de metal, utilice la arandela pasacable existente, agregue una arandela pasacable o utilice silicona para proteger el cable de alimentación de los bordes filosos.
4. El diseño general del conector T puede ser distinto de la ilustración. La ilustración solo se debe utilizar para la instrucción del conductor de alimentación. La ilustración no está a escala.

