

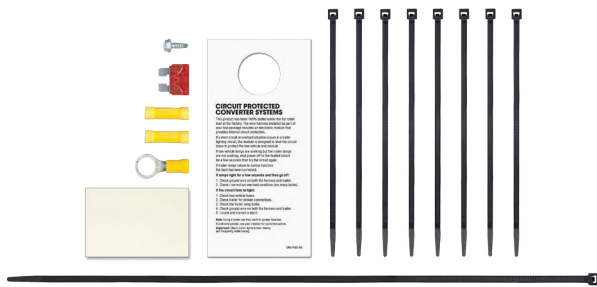
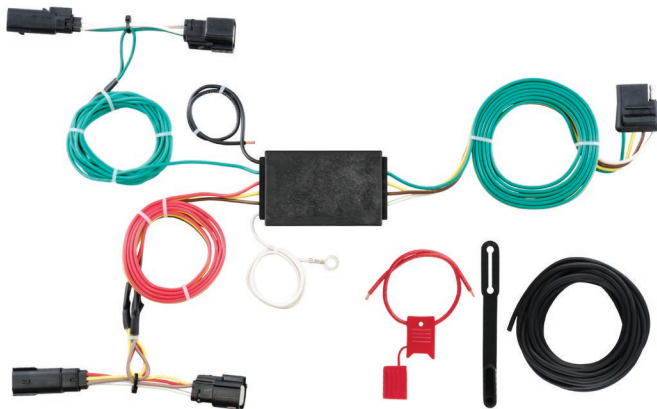
# INSTALLATION INSTRUCTIONS

**⚠ WARNING: DO NOT EXCEED PRODUCT RATING OR TOW VEHICLE LAMP LOAD RATING, WHICHEVER IS LOWER**

## APPLICATIONS

Make	Model
Ford	Edge Titanium and Sport

## CUSTOM WIRING HARNESS



## WIRING LOCATION GUIDE

### SUVs, MINI & FULL-SIZED VANS (S)

Representative vehicle shown below

S1 - Behind driver side taillight housing

S2 - Behind passenger side taillight housing



## NOTICE

All steps must be followed to ensure the wiring harness will function properly. Once installed, test for proper function by using a test light or connecting a properly wired trailer.

## TOOLS NEEDED

- 7mm socket
- 10mm socket
- 1/4" socket
- T-25 Torx bit
- Ratchet
- Ratchet extension
- Panel trim removal tool
- Wire stripper
- Crimping tool
- Side cutter
- Cutting tool

## ⚠ WARNING

The battery connection must be fuse-protected, 10-amp max. Exceeding the product rating can cause loss of warranty, overheating and potential fire. Do not exceed product rating or tow vehicle lamp load rating, whichever is lower.

Signal Circuits - 3.0 amps per side

Tail / Running Circuits - 6.0 amps total

Check vehicle owner's manual or contact the vehicle manufacturer for more information.

# INSTALLATION / SAFETY INSTRUCTIONS

## Step 1

Locate vehicle battery on the driver side under the hood and disconnect the negative battery terminal (A).

## Step 2

Open the vehicle tailgate. Remove all trunk floor coverings and storage trays (B).

## Step 3

Remove the two fasteners securing the rear scuff panel. Remove the scuff panel by pulling out on the bottom and then up (C). Take care not to damage the alignment tabs on the back.

## Step 4

Underneath the vehicle, locate a panel behind each rear tire. Remove the fasteners securing the panels in place. Remove the panels to gain access for routing the custom wiring harness (D).

## Step 5

Starting in the trunk on the driver side, pull back on the side trim panel to locate the grommet in the floor pan. Remove the grommet from the floor pan and route all the wiring harness wires, excluding the 4-flat and white ground wire, through the exposed hole (E).

## Step 6

Continuing on the driver side, remove the plastic cover and fastener securing the taillight (F). Loosen the taillight assembly by gently pulling rearward and out.

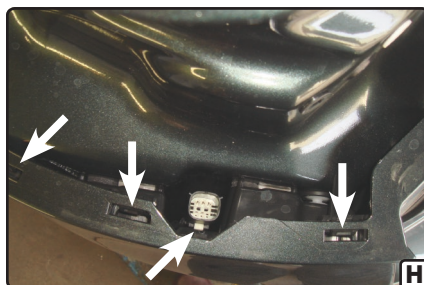
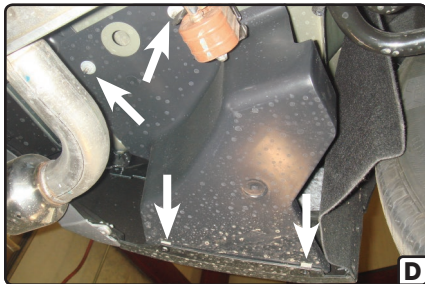
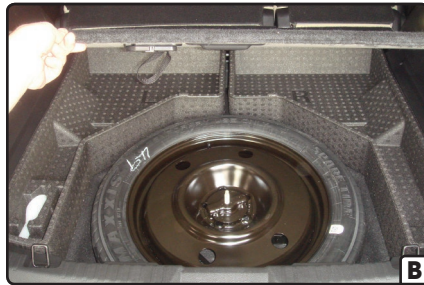
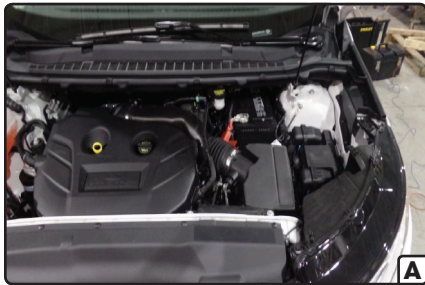
## Step 7

Behind the taillight, locate the vehicle taillight wiring harness connectors. The connectors will be similar to those on the custom wiring harness. Separate the connectors from the taillight housing taking care not to damage the locking tabs (G).

## Step 8

Remove the fastener holding the taillight connector into place (H). Do not let the taillight connector fall behind the fascia. Pull back on the outer cover of the fascia and release the fasteners holding it in place to allow for routing the wiring harness (I).

Instructions continued on page 3



# INSTALLATION / SAFETY INSTRUCTIONS

## Step 9

Using a piece of wire (not included) route the wiring harness ends with the yellow wire behind the fascia to the taillight (J).

## Step 10

Remove the white push fastener from the taillight connector and place it onto the wiring harness housing. Insert the custom wiring harness end with yellow wire between the separated connectors. Make sure the connectors are fully inserted with locking tabs in place (K).

## Step 11


Reinstall the connector with the white push fastener back into place (L).

## Step 12

Taking the removed grommet from the vehicles floor pan (M). Make a small slit in the grommet from center out to allow the harness wires to pass through. Seat the grommet with the harness wires passing through. Use the provided sealant to seal grommet where the wires pass through and where grommet was cut (N).

## Step 13

Locate a suitable grounding point near the connector such as an existing screw with nut in the vehicle frame or drill a 3/32" pilot hole for the provided screw. The area should be free of rust, dirt and paint. Secure the white ground wire using the ring terminal and provided screw.

 **WARNING:** Check for miscellaneous items that may be hidden behind or under any surface before drilling to avoid damage and / or personal injury.

## Step 14

Locate a flat spot inside the vehicle, near the taillight. Adhere the black converter box using the provided double-sided tape (N).

## Step 15

Route the custom wiring harness end with the green wire to the passenger side along the back bumper. Repeat steps 6-11 on the passenger side using the harness end with the green wire.

## Step 16

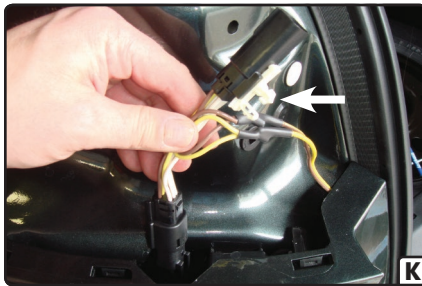
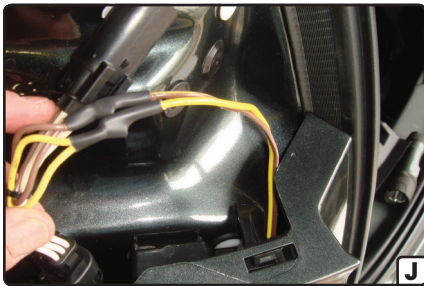
Route the black power wire from the vehicle battery as shown on the included CME-PCL-INS sheet.

## Step 12

When in use, route the 4-flat to the center of the vehicle. When not in use, roll up and store in a convenient, out of the way location. Secure any loose wires with the provided cable ties.

## Step 13

Reinstall all items removed during install and reconnect negative battery terminal. Install the provided 4-flat dust cover to help prevent corrosion.



# POWERED CONVERTER LEAD INSTRUCTION SHEET

## FICHE DE CONSIGNES DU CONVERTISSEUR D'ALIMENTATION

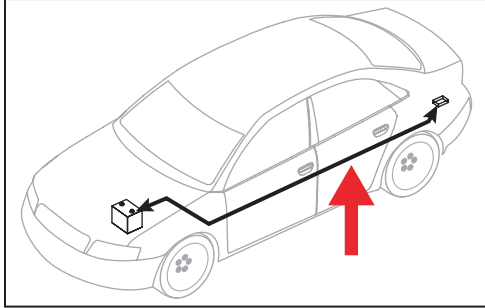
### HOJA DE INSTRUCCIONES DEL CONDUCTOR DEL ADAPTADOR ALIMENTADO POR BATERÍA

#### NOTICE AVIS / AVISO

Illustrations are for reference only. Battery location may differ depending on the vehicle.

Les images ne sont fournies qu'à des fins de référence. L'emplacement de la batterie peut varier en fonction du véhicule.

Las ilustraciones son solo para referencia. La ubicación de la batería puede variar según el vehículo.



#### WARNING AVERTISSEMENT / ADVERTENCIA

Route 12 GA wire to vehicle battery location, taking care to avoid any pinch points and hot or rotating components.

Acheminer le câble de calibre 12 à la batterie du véhicule en prenant soin d'éviter les points de pincement et les éléments chauds ou pivotants.

Pase el cable calibre 12 hacia la ubicación de la batería del vehículo, con cuidado de evitar atascos y componentes calientes o giratorios.

#### WARNING AVERTISSEMENT / ADVERTENCIA

To avoid personal injury or property damage, check for miscellaneous items that may be behind or under any surface before drilling.

Pour éviter les blessures et les dommages matériels, vérifier les divers articles qui peuvent se trouver derrière ou sous la surface avant de percer.

Para evitar lesiones personales o daños materiales, verifique que no haya ningún elemento detrás o debajo de la superficie antes de perforar.

#### NOTICE AVIS / AVISO

1. This converter system is to be used only on 12 volt negative ground systems.
2. Secure power wire to vehicle chassis using cable ties provided.
3. When passing the power wire through sheet metal, use an existing grommet, add a grommet or use silicone to protect the power wire from sharp edges.
4. Overall T-connector design may differ from illustration. The illustration should be used for power lead instruction only. Illustration is not to scale.

1. Ce système de convertisseur ne doit être utilisé qu'avec une prise de masse de polarité négative de 12 volts.
2. Fixer le câble d'alimentation au châssis du véhicule à l'aide des courroies d'attache de câble fournies.
3. Utiliser un œillet existant, ajouter un œillet ou appliquer du silicone pour protéger le câble d'alimentation des rebords tranchants au moment de le passer à travers la tôle.
4. La disposition générale du connecteur en T peut différer de l'illustration. Celle-ci ne doit être utilisée que pour le convertisseur d'alimentation. L'illustration n'est pas à l'échelle.

1. Este sistema de adaptadores solo se debe utilizar con sistemas con polo negativo a masa de 12 voltios.
2. Sujete el cable de alimentación al chasis del vehículo utilizando los sujetacables suministrados.
3. Al pasar el cable de alimentación por la lámina de metal, utilice la arandela pasacable existente, agregue una arandela pasacable o utilice silicona para proteger el cable de alimentación de los bordes filosos.
4. El diseño general del conector T puede ser distinto de la ilustración. La ilustración solo se debe utilizar para la instrucción del conductor de alimentación. La ilustración no está a escala.

