

# INSTALLATION MANUAL

# 18320

## Level of Difficulty

Easy

## Parts List

Qty	Description	#
2	Kayak holder	1
2	Tie-down strap	2
4	Carriage bolt	3
4	Flat washer	4
4	Hand wheel	5
2	Bracket	6

## Weight Capacities

Holder capacity	75 lbs.	34 kg
Holder weight	7.5 lbs.	3.4 kg

## Product Registration

CURT Group stands behind our products with industry leading warranties. You can help us continue to improve our product line and help us understand your needs by registering your purchase by visiting:

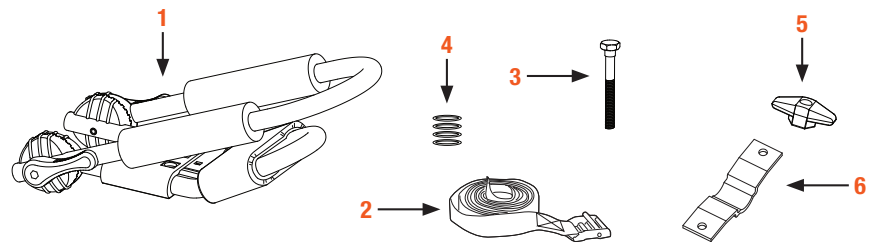
[warranty.curtgroup.com/surveys](http://warranty.curtgroup.com/surveys)

At CURT Group, customer is king. We value your feedback and we use that information to make improvements on our products. Please, take a minute and let us know how we are doing.

## Product Photo



## Brackets and Hardware



## Notes and Maintenance

Before you begin installation, read all instructions thoroughly.

Proper tools will improve the quality of installation and reduce the time required.

Mild automotive detergent may be used to clean the product. Do not use dish detergent, abrasive cleaners, abrasive pads, wire brushes or other similar products that may damage the finish.

Make sure the kayak holders are secured before every trip.

The kayak holders must be periodically inspected for signs of wear, corrosion and fatigue.

Check at each stop to ensure the load is secure.

Remove your kayak holders when not in use and before entering automatic car washes.

Do not use the kayak holders for purposes other than those for which they were designed.

Check local and state laws governing projection of objects beyond the perimeter of a vehicle.

Be aware of the width and height of your cargo in low clearance areas.

Do not exceed 80 mph (130 km/h).

Do not attempt to modify the cross bars or any of the system components.

## Step 1

Rotate the locking handle 90° to the right or left to release the lock.

Rotate the backrest to the desired position. To lock, return the locking handle to be parallel with the backrest, as shown.

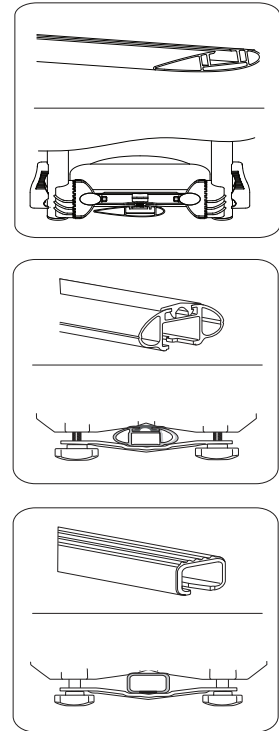
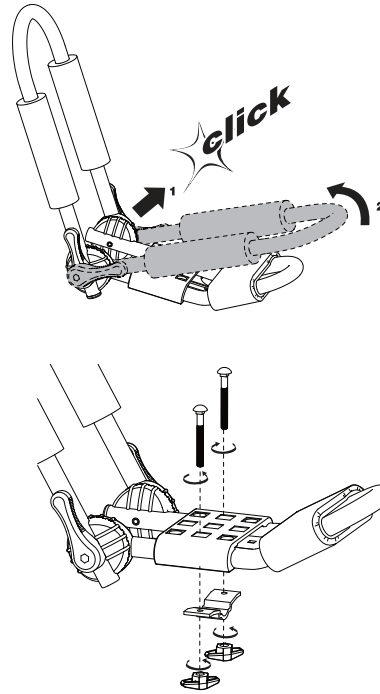
**CAUTION:** Pinch hazard.

Place the kayak holder (#1) onto the vehicle cross bar in the desired position. Insert two carriage bolts (#3) through the kayak holder frame, as shown.

Slide the mounting bracket (#6) onto the bolts, followed by a flat washer (#4) on each bolt. Tighten firmly with the provided hand wheels (#5).

**Note:** Do not overtighten to prevent damage to your kayak and / or kayak holders.

Repeat this step for other kayak holder.



## Step 2

Position the vehicle cross bars appropriately to fit the kayak being transported, maintaining a minimum spacing of 23-5/8".

Place a tie-down strap buckle (#2) on the outer side of the kayak. Pass the other end of the strap over and through the kayak holder backrest and over the kayak, passing beneath the buckle. Continue passing the strap downward through the kayak holder frame, around the vehicle crossbar and then upward through the kayak holder frame, as shown. Pass the strap through the slot in the leather pad.

While pressing the buckle handle open, pass the strap through the buckle from the bottom side. Release the buckle handle and pull the strap to be snug. Tie the loose end of the strap to the kayak holder frame or vehicle crossbar.

When not in use, remove the tie-down straps and fold the backrest down by rotating the locking handle 90° to the right or left to release the lock. Rotate the backrest to the desired position. To lock, return the locking handle to be parallel with the frame, as shown.

**CAUTION:** Pinch hazard.

