

14258

## RAM 2500 / 3500 SHORT BED

10/06/2020

GROSS LOAD CAPACITY WHEN USED AS A WEIGHT CARRYING HITCH: 10,000 LBS. TRAILER WEIGHT & 1,000 LBS. TONGUE WEIGHT.  
GROSS LOAD CAPACITY WHEN USED AS A WEIGHT DISTRIBUTION HITCH: 12,000 LBS. TRAILER WEIGHT & 1,200 LBS. TONGUE WEIGHT



**WARNING: \*\*\* DO NOT EXCEED VEHICLE MANUFACTURER'S RECOMMENDED TOWING CAPACITY. \*\*\***

FOR MORE INFORMATION LOG ONTO [WWW.CURTMFG.COM](http://WWW.CURTMFG.COM) & FOR HELPFUL TOWING TIPS LOG ONTO [WWW.HITCHINFO.COM](http://WWW.HITCHINFO.COM)  
HAVING INSTALLATION QUESTIONS? CALL TECHNICAL SUPPORT AT 877-287-8634



Parts List			
ITEM	QTY	PART NUMBER	DESCRIPTION
1	4	10-10288	BOLT,CAR,1/2-13 UNC,2,GRD8,YZ
2	2	10-10530	HHCS,1/2-13 UNC,2-1/4,GRD8,YZ
3	2	CM-SP4	.250 x 1.50 x 3.00" SQUARE HOLE SPACER
4	2	CM-SP32	.188 x 1.50 x 2.00" ROUND HOLE SPACER
5	4	CM-SP34	.188 x 1.50 x 3.00" ROUND HOLE SPACER
6	2	CM-SP48	.250 x 2.13 x 2.13" SQUARE HOLE SPACER
7	2	30-00133	WASHER,FLAT,1/2,YZ
8	6	20-00062	NUT, SER-FLANGE,1/2-13 UNC,GRD8,YZ
9	2	1_2 FISHWIRE	1/2" FISHWIRE

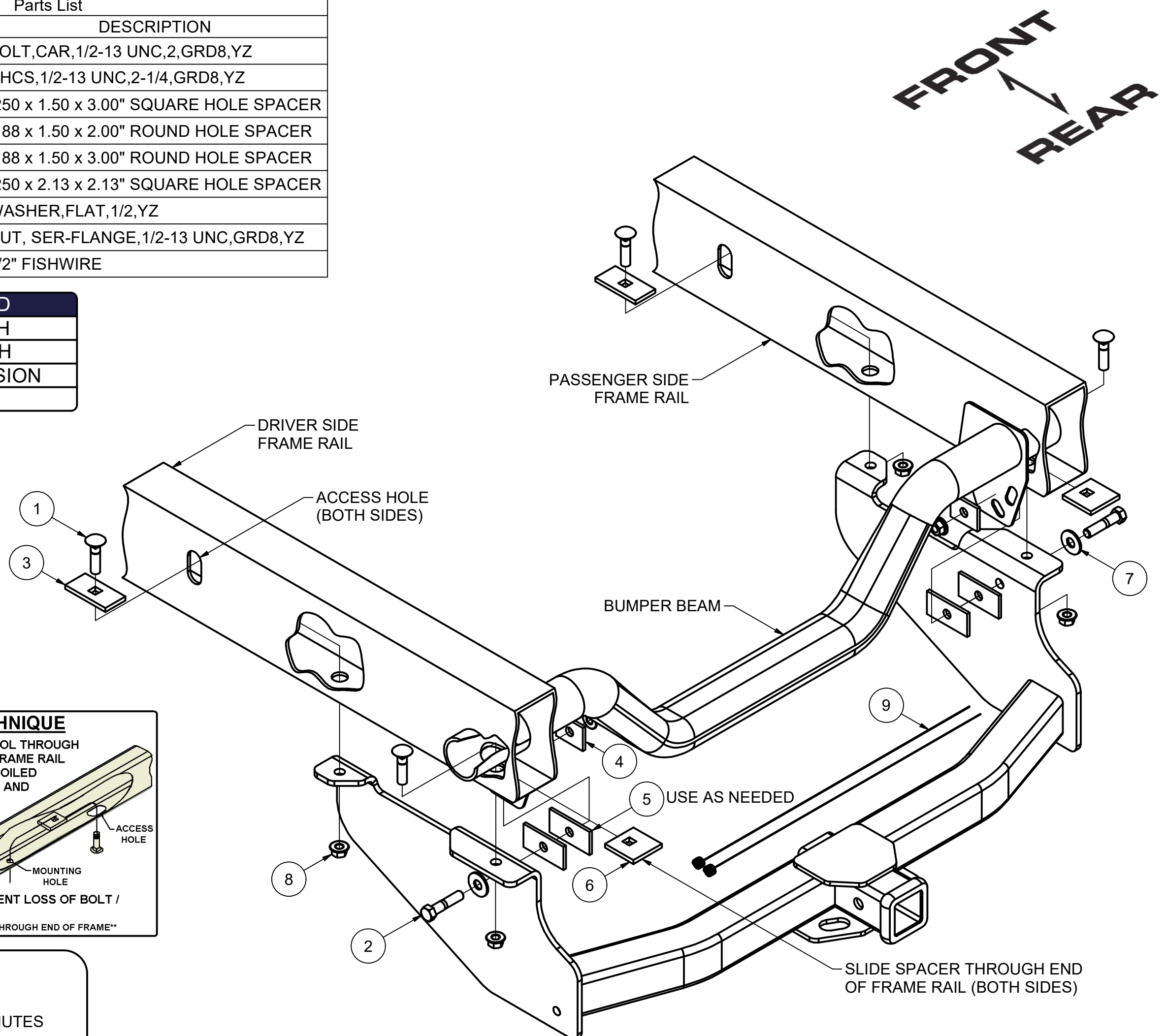
## TOOLS REQUIRED

SOCKET WRENCH

TORQUE WRENCH

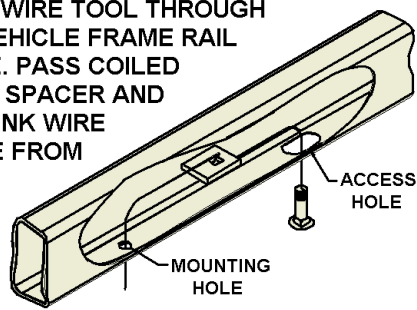
8in. SOCKET EXTENSION

3/4" SOCKET



## FISHWIRE TECHNIQUE

INSERT COILED END OF FISHWIRE TOOL THROUGH HITCH MOUNTING HOLE IN VEHICLE FRAME RAIL AND OUT THE ACCESS HOLE. PASS COILED END OF FISHWIRE THROUGH SPACER AND THREAD BOLT INTO COIL. KINK WIRE TO KEEP SPACER SEPARATE FROM BOLT AS SHOWN. PULL FISHWIRE, SPACER, AND BOLT THROUGH FRAME AND OUT MOUNTING HOLE. USE FISHWIRE TO GUIDE HITCH DURING MOUNTING AND PREVENT LOSS OF BOLT / SPACER INSIDE FRAME RAIL.



\*\*NOTE: SOME VEHICLES MAY FISHWIRE THROUGH END OF FRAME\*\*

HITCH WEIGHT: 51 LBS.

## INSTALL TIME

PROFESSIONAL: 30 MINUTES

NOVICE (DIY): 60 MINUTES

## INSTALL NOTES:

- NO DRILLING REQUIRED
- FISHWIRE REQUIRED

## INSTALLATION STEPS

1. Raise hitch into position by aligning holes in hitch side plates with holes in frame rails.
2. Slide CM-SP48 through ends of frame rails and align holes in spacers with rear mounting holes.
3. Fishwire 1/2" carriage bolts and CM-SP4 spacers through access holes in side of frame rails into position. (See FISHWIRE TECHNIQUE diagram.)
4. Fishwire 1/2" carriage bolts through bumper beam and through CM-SP48 spacers from Step 2.
5. Align slots in hitch with slots in vehicle tow loops and secure hitch with 1/2" hex flange nuts onto carriage bolts.
6. Install 1/2" hex bolts and flat washers with enough CM-SP34 spacers between tow loops and hitch side plates to prevent the tow loops from pulling into hitch when the hex bolts are tightened.
7. Secure hex bolts with CM-SP32 spacers and 1/2" hex flange nuts.
8. Torque all 1/2" hardware to 110 lb-ft.

**PERIODICALLY CHECK THIS RECEIVER HITCH TO ENSURE THAT ALL FASTENERS ARE TIGHT AND THAT ALL STRUCTURAL COMPONENTS ARE SOUND.**



Scan for more information

CURT Manufacturing LLC., warrants this product to be free of defects in material and/or workmanship at the time of retail purchase by the original purchaser. If the product is found to be defective, CURT Manufacturing LLC., may repair or replace the product, at their option, when the product is returned, prepaid, with proof of purchase. Alteration to, misuse of, or improper installation of this product voids the warranty. CURT Manufacturing LLC.'s liability is limited to repair or replacement of products found to be defective, and specifically excludes liability for incidental or consequential loss or damage.

This product complies with safety specifications and requirements for connecting devices and towing systems of the state of New York, V.E.S.C.Regulation V-5 and SAE J684.