

# INSTALLATION MANUAL

13646

## Level of Difficulty

Difficult

Installation difficulty levels are based on time and effort involved and may vary depending on the installer level of expertise, condition of the vehicle and proper tools and equipment.

## Weight Carrying Capacity

Gross trailer weight (GTW)	5,000 lbs.
Tongue weight (TW)	500 lbs.

## Parts List

Item	Qty	Description
1	1	Trailer Hitch
2	8	Hex bolt, M10-1.5 x 45mm
3	8	Conical-toothed washer, 3/8"

## Tools Required

Ratchet	Torque wrench
Socket, 10mm	Socket, 16mm
Socket, 17mm	Socket extension, 6"
Torx bit, T-20	Torx bit, T-25
Trim panel pry tool	Pliers

\* For a tools reference guide visit [curtmfg.com/trailer-hitch-installation](http://curtmfg.com/trailer-hitch-installation)

## ⚠ WARNING

Never exceed the vehicle manufacturer's recommended towing capacity.

## Product Photo



## NOTICE

Visit [www.curtmfg.com](http://www.curtmfg.com) for a full-color copy of this instruction manual, as well as helpful videos, guides and much more!

Before you begin installation, read all instructions thoroughly.

Proper tools will improve the quality of installation and reduce the time required.

This installation requires:

- Temporary part removal.
- Bend/trim heat shield.
- No drilling required.
- Temporary removal of rear fascia and bumper beam.

Periodic inspection of the trailer hitch should be performed to ensure all mounting hardware remains tight and structural components are secure.

To help prevent damage to the product or vehicle, refer to the specified torque specifications when securing hardware during the installation process.

## SAFETY INSTRUCTIONS

Safety glasses should be worn at all times while installing this product.

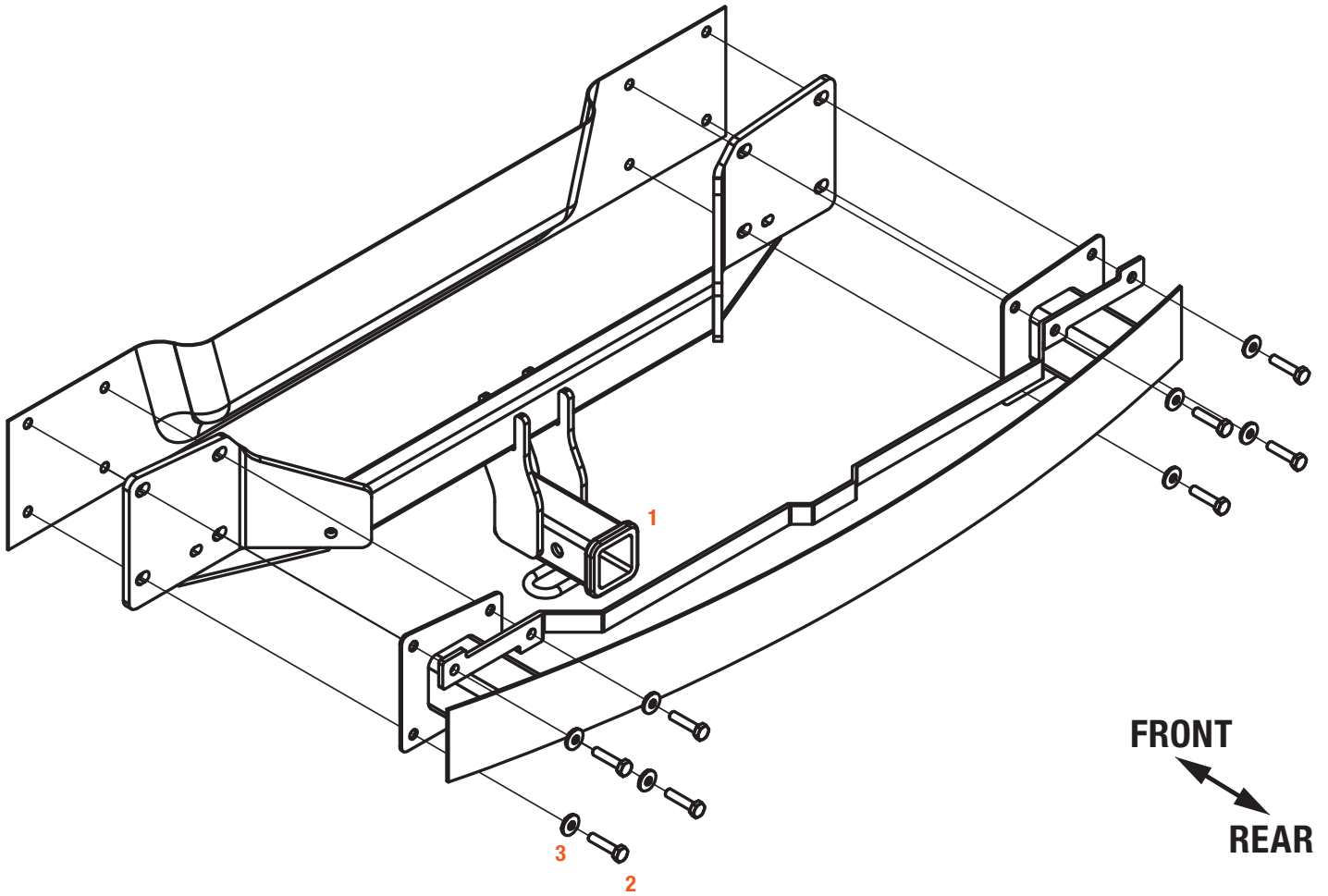
## Product Registration and Warranty

CURT stands behind our products with industry-leading warranties. To get copies of the product warranties, register your purchase or provide feedback, visit: [warranty.curtgroup.com/surveys](http://warranty.curtgroup.com/surveys)

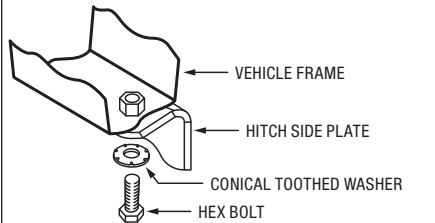
# ASSEMBLY

## Parts List

Item	Qty	Description
1	1	Trailer Hitch
2	8	Hex bolt, M10-1.5 x 45mm
3	8	Conical-toothed washer, 3/8"



## CONICAL TOOTHED WASHER ORIENTATION



## Step 1

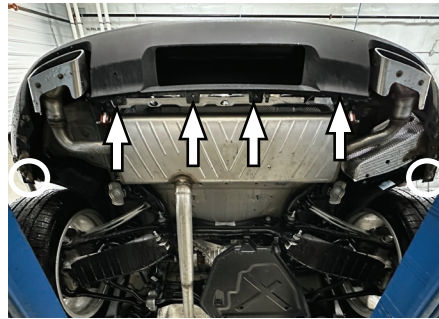
Identify if the vehicle is early 2018-2025 or late 2025+ body style.



## Step 2

Remove the four screws (arrows) from the bottom of the rear fascia using a T-25 torx bit socket.

**For 2025+:** Remove two additional screws (circled) from the bottom of the rear fascia near the wheel wells.



## Step 3

Using a T-25 torx bit socket, remove the screws securing the wheel well liner on both sides.

**For 2018-2025:** One screw (circled) per side securing the bottom corner of the liner.

**For 2025+:** Three screws (arrows) per side securing the liner.



## Step 4

Gently pull away the wheel well trim to reveal screws securing the rear fascia. Use a trim panel pry tool as needed. Remove screws using a T-25 torx bit socket.

**For 2018-2025:** One screw per side

**For 2025+:** Two screws per side. Note: the lower screw is longer.



## Step 5

Pull away the wheel well liner to reveal screws securing the rear fascia and remove using a T-25 torx bit socket.

**For 2018-2025:** Three screws per side

**For 2025+:** Two screws per side.

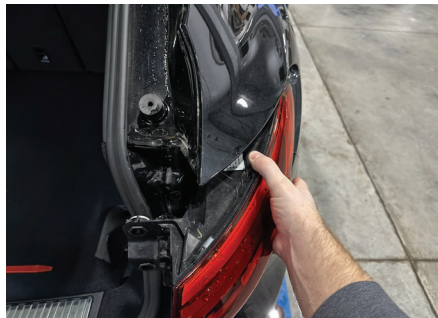
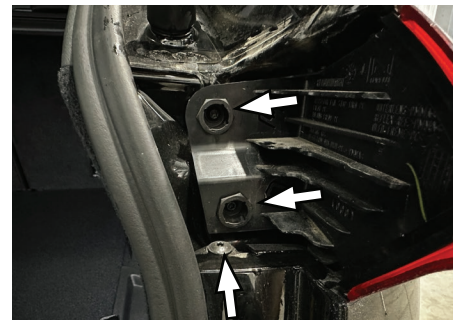
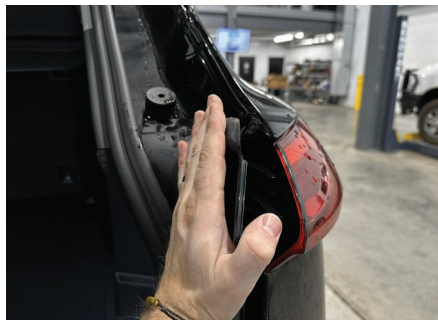


## Step 6

**For 2018-2025:** Open the rear liftgate. Use a T20 torx bit socket to remove the two screws located at the bottom corners of the hatch opening.

**For 2025+:** Open the liftgate and remove the plastic cover next to each taillight by pressing on the cover while prying the outer edge inward away from the taillight.

Remove two screws from the taillight and one screw securing the rear fascia with a T25 torx bit socket on both sides. Pull the taillight rearward to remove and disconnect the electrical connector. Set aside for reinstallation.



### Step 7

If equipped, remove all cargo anchor screws securing the trunk floor using a T-25 torx bit socket.

Lift up and remove the trunk floor.



### Step 8

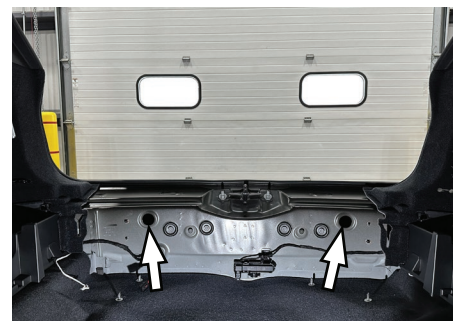
Starting from the side using a trim panel pry tool, pull up and remove the scuff plate.

If equipped with a rear speaker, use a 10mm socket to remove the four nuts securing the speaker. Unplug the electrical connector and set the speaker aside.



### Step 9

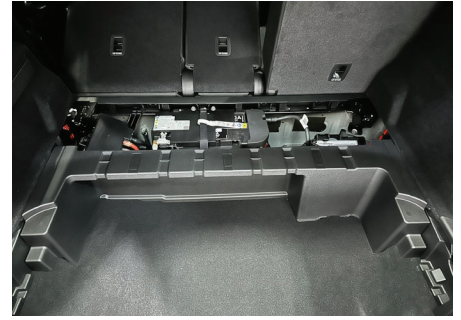
Locate the two outermost rubber plugs under the scuff plate. Remove the plugs to gain access to two nuts securing the rear fascia. Remove the nuts with a 10mm socket.



## Step 10

**For 2018-2025:** Remove the access panel on both sides of the trunk.

**For 2025+:** Remove the access panel on the passenger side of the trunk. Lift and remove the trunk floor support.



## Step 11

**For 2025+:** On the driver side panel, pull the rear seat release. Using a T25 torx bit socket, remove the screw behind the release handle.

Remove the corner trim piece from the driver side panel.



## Step 12

**For 2025+:** Gently pull away the driver side panel to gain access behind it.

Disconnect the two electrical connectors to gain full access behind the panel.



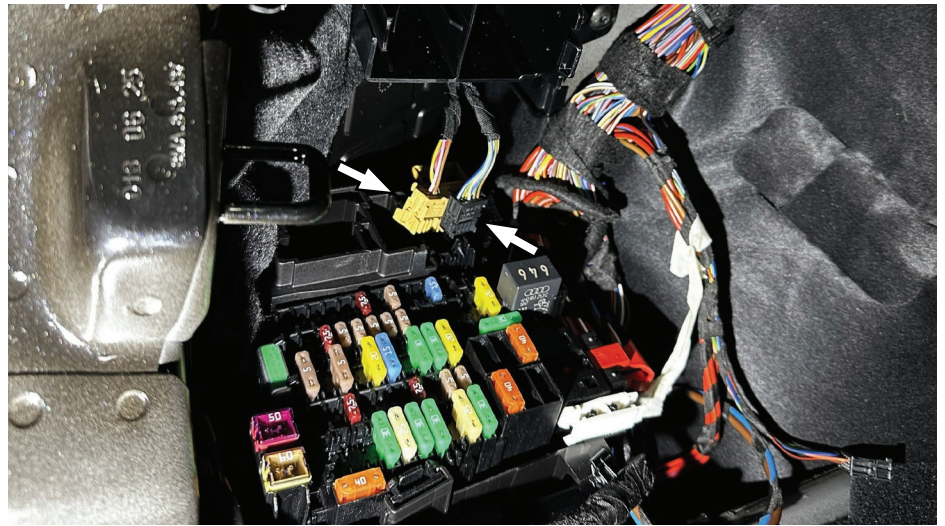
### Step 13

On the driver side, locate the harness leading out of the vehicle and connecting to the rear fascia. Disconnect the two electrical connectors (tan and black plugs) from the fuse block.

#### **⚠ WARNING**

Do not start the vehicle while fuse block connectors are disconnected. Doing so may require vehicle reprogramming by a dealership.

Locate the two nuts, one per side, found inside the access/side panel area. Remove the nuts using a 10mm socket.



### Step 14

Gently remove the rear fascia starting from the sides and working towards the rear of the vehicle.

Remove the electrical harness grommet from the vehicle and feed the electrical connectors out of the vehicle body.

Set the rear fascia aside for later reinstallation.



### Step 15

Using a 16mm socket, remove the eight bolts securing the bumper beam and bracket. Set the bumper beam and bracket aside for later reinstallation.

Return the removed mounting hardware to the customer.

**Note:** 2025+ is not equipped with a bumper bracket.



### Step 16

Raise the hitch into position and check for contact with the exhaust heatshield.

Bend or cut the heatshield as needed to avoid contact.

Raise the bumper beam and bracket into position over the hitch and secure with the supplied M10 bolts (#2) and conical toothed washers (#3).

Torque all M10 hardware to 45 ft-lbs.



### Step 17

Reinstall the rear fascia and all removed components following steps 1-15 in reverse order.

Stretch the bottom of the rear fascia over the hitch receiver, placing it into the existing access opening.



## Final Installed Image



## TOWING BASICS & SAFETY INFORMATION

For information on safely towing your trailer, visit [curtmfg.com/understanding-towing](https://curtmfg.com/understanding-towing).