



INSTALLATION MANUAL

13642

Level of Difficulty

Easy

Installation difficulty levels are based on time and effort involved and may vary depending on the installer level of expertise, condition of the vehicle and proper tools and equipment.

Weight Carrying Capacity

Gross trailer weight (GTW) 5,000 lbs.

Tongue weight (TW) 750 lbs.

Parts List

| Item | Qty | Description |
|------|-----|-----------------------------------|
| 1 | 1 | Trailer hitch |
| 2 | 8 | Hex bolt, M12 - 1.25 x 40, CL 8.8 |
| 3 | 8 | Conical-toothed washer, 1/2" |

Tools Required

| | |
|----------------------|----------------------|
| Ratchet | Torque wrench |
| Socket, 9mm | Socket, 19mm |
| Socket extension, 6" | Exhaust Removal Tool |

* For a tools reference guide visit curtmfg.com/trailer-hitch-installation

⚠ WARNING

Never exceed the vehicle manufacturer's recommended towing capacity.

Product Photo



NOTICE

Visit www.curtmfg.com for a full-color copy of this instruction manual, as well as helpful videos, guides and much more!

Before you begin installation, read all instructions thoroughly.

Proper tools will improve the quality of installation and reduce the time required.

This installation requires:

- Temporary lowering of exhaust
- Temporary removal of spare tire
- No drilling required

Periodic inspection of the trailer hitch should be performed to ensure all mounting hardware remains tight and structural components are secure.

To help prevent damage to the product or vehicle, refer to the specified torque specifications when securing hardware during the installation process.

SAFETY INSTRUCTIONS

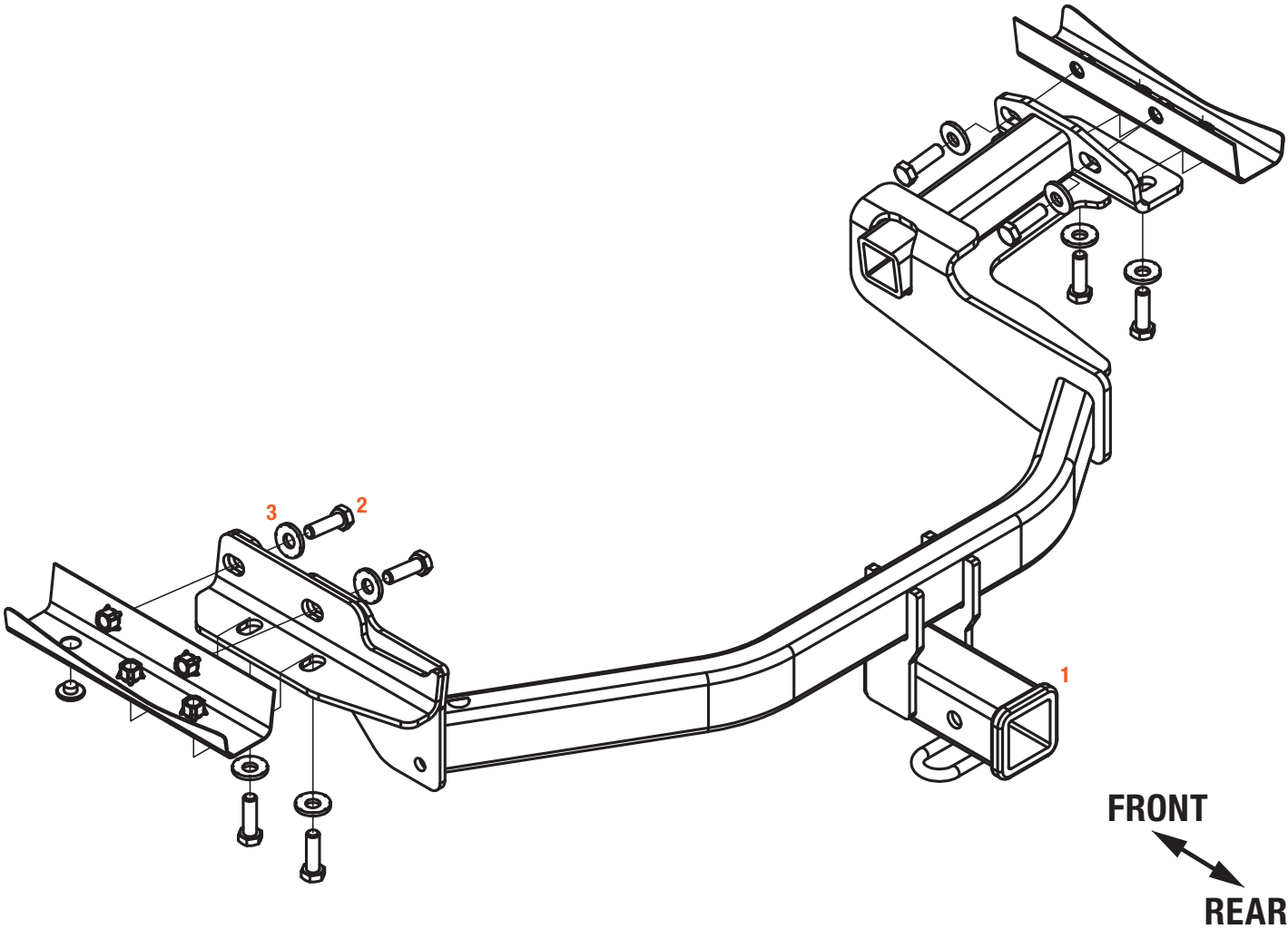
Safety glasses should be worn at all times while installing this product.

Product Registration and Warranty

CURT stands behind our products with industry-leading warranties. To get copies of the product warranties, register your purchase or provide feedback, visit: warranty.curtgroup.com/surveys

ASSEMBLY

| Parts List | | |
|------------|-----|-----------------------------------|
| Item | Qty | Description |
| 1 | 1 | Trailer hitch |
| 2 | 8 | Hex bolt, M12 - 1.25 x 40, CL 8.8 |
| 3 | 8 | Conical-toothed washer, 1/2" |



WELDNUT CLEANING

To remove debris from weldnuts in frame, spray lubricant or compressed air into the hole. For heavy debris, use a wire brush. Take care not to damage threads.

CONICAL TOOTHED WASHER ORIENTATION

VEHICLE FRAME

HITCH SIDE PLATE

CONICAL TOOTHED WASHER

HEX BOLT

RUBBER ISOLATOR REMOVAL DIAGRAM

This technique can be used if exhaust hanger removal pliers are not available. Using a 5/8" open end wrench, slide the wrench up to the rubber isolator, cradling the hanger rod as shown. Place the flat edge of a pry bar between the wrench and the hanger stop or hanger rod. Then simply rotate the pry bar toward the wrench to remove the rubber isolator.

Note: Using a lubricant or soapy water on the hanger rod and the rubber isolator helps removal.

Step 1

Loosen the spare tire carrier nut using a 9mm socket.

Lower the spare tire and set it aside for reinstallation in step 5.



Step 2

Lower the exhaust by removing the three rearmost exhaust hanger rods from the three rubber isolators.

Support the exhaust with a stand to prevent any damage.

The exhaust will be reinstalled in step 5.



Step 3

Remove one rubber plug from the bottom of the frame rail on both sides.

Return these plugs to the owner.



Step 4

Raise the trailer hitch into position by sliding the passenger side of the hitch over the exhaust first.

Align the four holes on both sides of the hitch with the four weld nuts in the frame rails on both sides of the vehicle.

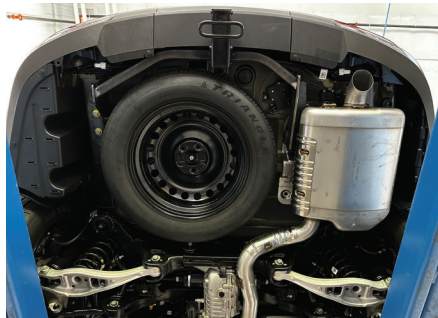
Loosely install four hex bolts (#2) and four conical washers (#3) into the hitch holes and weld nuts on both sides.

Torque all M12 fasteners to 68 ft-lbs.



Step 5

Reinstall the spare tire and exhaust removed in steps 1 and 2.



Final Installed Image



TOWING BASICS & SAFETY INFORMATION

For information on safely towing your trailer, visit curtmfg.com/understanding-towing.