



INSTALLATION MANUAL

13635

Level of Difficulty

Difficult

Installation difficulty levels are based on time and effort involved and may vary depending on the installer level of expertise, condition of the vehicle and proper tools and equipment.

Weight Carrying Capacity

Gross trailer weight (GTW)	3,500 lbs.
Tongue weight (TW)	525 lbs.

Parts List

Item	Qty	Description
1	1	Trailer hitch
2	4	Hex bolt, M10 – 1.5 x 35mm
3	4	Conical-toothed washer, 3/8"

Tools Required

Ratchet	Torque wrench
Socket, 7mm	Socket, 8mm
Socket, 10mm	Socket, 15mm
Socket extension, 6"	Tape measure
Flathead screwdriver	Tape
Cut-off wheel	--

* For a tools reference guide visit curtmfg.com/trailer-hitch-installation

Product Registration and Warranty

CURT stands behind our products with industry-leading warranties. To get copies of the product warranties, register your purchase or provide feedback, visit: warranty.curtgroup.com/surveys

⚠ WARNING

Never exceed the vehicle manufacturer's recommended towing capacity.

SAFETY INSTRUCTIONS

Safety glasses should be worn at all times while installing this product.

Product Photo



NOTICE

Visit www.curtmfg.com for a full-color copy of this instruction manual, as well as helpful videos, guides and much more!

Before you begin installation, read all instructions thoroughly.

Proper tools will improve the quality of installation and reduce the time required.

This installation requires:

- Part removal

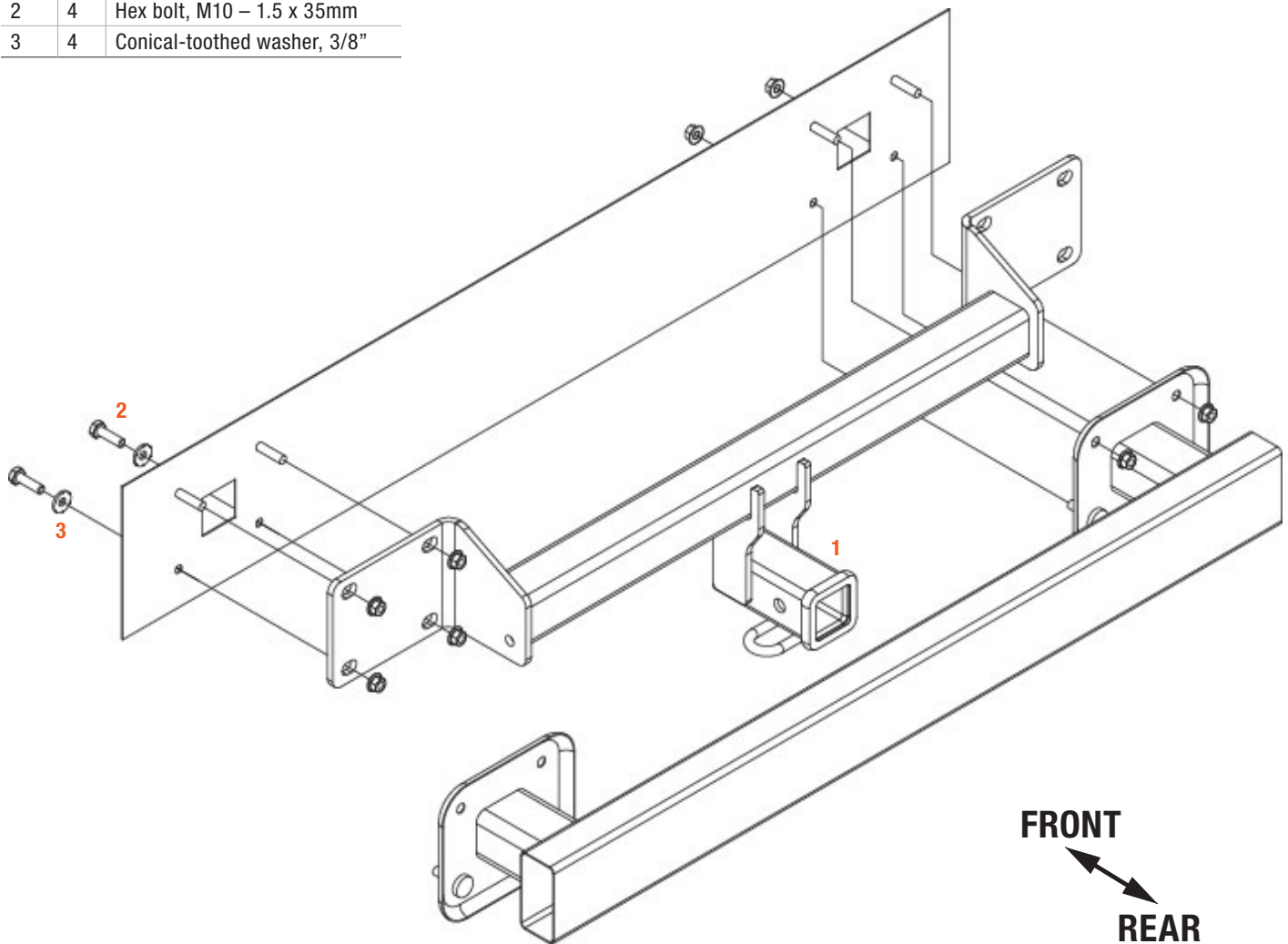
Periodic inspection of the trailer hitch should be performed to ensure all mounting hardware remains tight and structural components are secure.

To help prevent damage to the product or vehicle, refer to the specified torque specifications when securing hardware during the installation process.

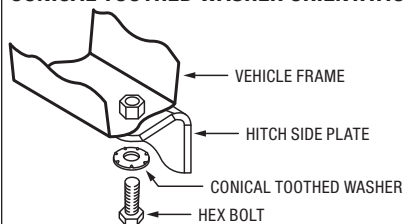
ASSEMBLY

Parts List

Item	Qty	Description
1	1	Trailer hitch
2	4	Hex bolt, M10 – 1.5 x 35mm
3	4	Conical-toothed washer, 3/8"



CONICAL TOOTHED WASHER ORIENTATION

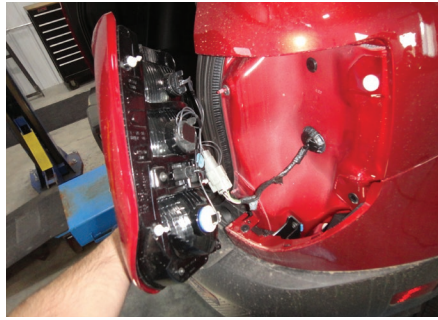


Step 1

Remove the taillights by opening the liftgate and removing the plastic cover next to each taillight.

Remove two (2) nuts from the taillight with a 10mm socket. Pull the taillight rearward to remove and disconnect the electrical connector.

Set aside for reinstallation in step 11.



Step 2

Remove the newly exposed push fastener from the top of the bumper cover.



Step 3

Use a 7mm socket to remove eight (8) screws from the bottom of the bumper cover.



Step 4

Remove the five (5) push fasteners from each wheel well.

Gently pull back the outer wheel well trim and remove the bolt using an 8mm socket.



Step 5

Remove the bumper cover by carefully pulling it away from the vehicle, starting near the wheels and working rearward.



Step 6

Disconnect the electrical connector and set the bumper cover aside for reinstallation in step 11.



Step 7

Remove the plastic support from the bumper by removing six (6) screws with an 8mm socket and set aside for reinstallation in step 11.



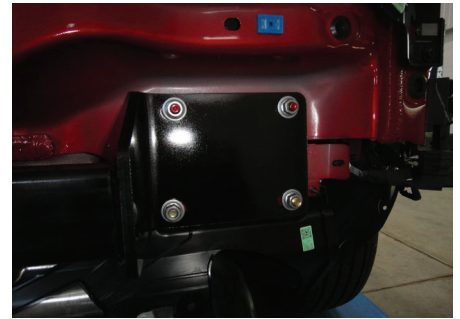
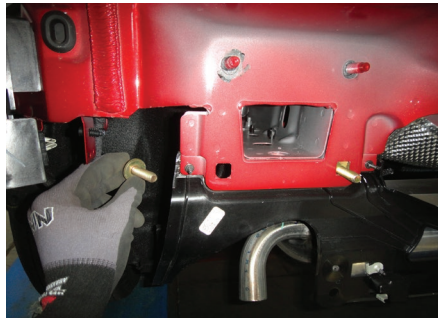
Step 8

Remove the bumper beam by removing eight (8) bolts using a 15mm socket. Return bumper beam to the vehicle owner.



Step 9

Raise hitch into position and secure with the factory nuts and the supplied M10 bolts and conical toothed washers.



Step 10

Torque all M10 fasteners to 45 ft-lbs.



Step 11

Trim the bumper cover using the trim diagram for reference.

Reinstall the bumper cover by following steps 1-7 in reverse order.



TOWING BASICS & SAFETY INFORMATION

For information on safely towing your trailer, visit curtmfg.com/understanding-towing.