

INSTALLATION MANUAL

13616

Level of Difficulty

Easy

Installation difficulty levels are based on time and effort involved and may vary depending on the installer level of expertise, condition of the vehicle and proper tools and equipment.

Weight Carrying Capacity

Gross trailer weight (GTW)	3,500 lbs.
Tongue weight (TW)	525 lbs.

Parts List

Item	Qty	Description
1	2	Hex bolt, M10-1.25 x 35
2	4	Hex bolt, 1/2"-13 x 4-1/2"
3	4	Serrated-flange nut, 1/2"-13
4	4	Flat washer, 1/2"
5	2	Conical-toothed washer, 3/8"

Tools Required

Ratchet	Socket, 14mm
Wrench, 3/4"	Socket, 17mm
Torque wrench	Socket, 3/4"

* For a tools reference guide visit curtmfg.com/trailer-hitch-installation

⚠ WARNING

Never exceed the vehicle manufacturer's recommended towing capacity.

Product Photo



NOTICE

Visit www.curtmfg.com for a full-color copy of this instruction manual, as well as helpful videos, guides and much more!

Before you begin installation, read all instructions thoroughly.

Proper tools will improve the quality of installation and reduce the time required.

This installation requires:

- Part removal

Periodic inspection of the trailer hitch should be performed to ensure all mounting hardware remains tight and structural components are secure.

To help prevent damage to the product or vehicle, refer to the specified torque specifications when securing hardware during the installation process.

SAFETY INSTRUCTIONS

Safety glasses should be worn at all times while installing this product.

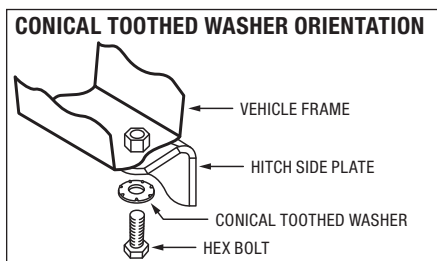
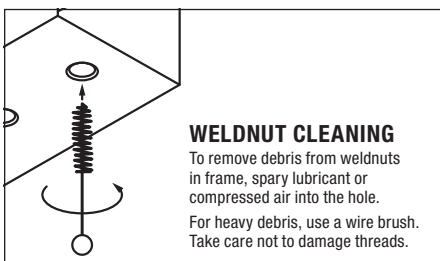
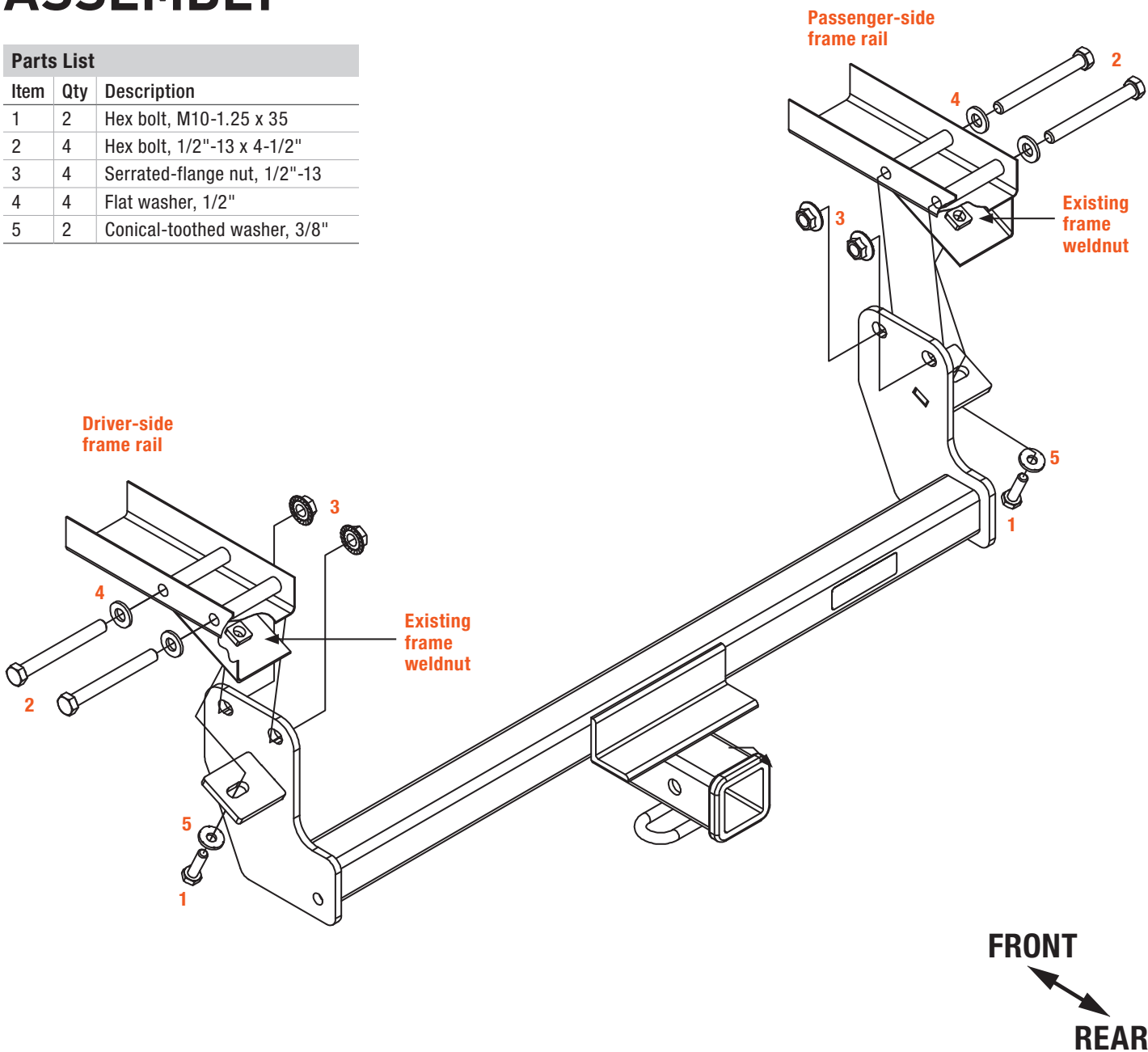
Product Registration and Warranty

CURT stands behind our products with industry-leading warranties. To get copies of the product warranties, register your purchase or provide feedback, visit: warranty.curtgroup.com/surveys

ASSEMBLY

Parts List

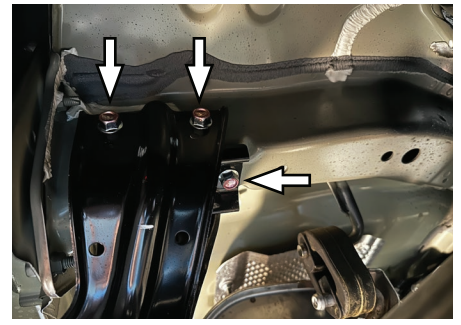
Item	Qty	Description
1	2	Hex bolt, M10-1.25 x 35
2	4	Hex bolt, 1/2"-13 x 4-1/2"
3	4	Serrated-flange nut, 1/2"-13
4	4	Flat washer, 1/2"
5	2	Conical-toothed washer, 3/8"



Step 1

Using a 14mm socket, remove the tie down bracket located on the passenger-side frame rail by removing three (3) bolts.

Return the bracket and bolts to the owner.



Step 2

Raise the hitch into position. Loosely secure with 1/2" (#2, #3, #4) hardware using a 3/4" socket and wrench. Loosely secure the M10 fasteners (#1) with the 3/8" conical washers (#5) using a 17mm socket.



Step 3

Torque the 1/2" fasteners to 90 ft-lbs.

Torque the M10 fasteners to 45 ft-lbs.



Final Installed Image



TOWING BASICS & SAFETY INFORMATION

For information on safely towing your trailer, visit [curtmfg.com/understanding-towing](https://www.curtmfg.com/understanding-towing).