

INSTALLATION MANUAL

13610

Level of Difficulty

Moderate

Installation difficulty levels are based on time and effort involved and may vary depending on the installer level of expertise, condition of the vehicle and proper tools and equipment.

Weight Carrying Capacity

| | |
|----------------------------|------------|
| Gross trailer weight (GTW) | 2,000 lbs. |
| Tongue weight (TW) | 200 lbs. |

Parts List

| Item | Qty | Description |
|------|-----|--|
| 1 | 6 | Carriage bolt, 7/16"- 14 x 1-1/4" |
| 2 | 6 | Serrated-flange nut, 7/16"- 14 |
| 3 | 6 | Square-hole spacer, 1.75" x .875" x .25" |

Tools Required

| | |
|-------------------------------------|----------------------------|
| Ratchet | Socket, 11/16" |
| Torque wrench | Socket extension, 6" |
| Fishwire, 7/16" (includes 6 qty) | Flathead screwdriver -- |

* For a tools reference guide visit curtmfg.com/trailer-hitch-installation

Product Registration and Warranty

CURT stands behind our products with industry-leading warranties. To get copies of the product warranties, register your purchase or provide feedback, visit: warranty.curtgroup.com/surveys

⚠ WARNING

Never exceed the vehicle manufacturer's recommended towing capacity.

Product Photo



NOTICE

Visit www.curtmfg.com for a full-color copy of this instruction manual, as well as helpful videos, guides and much more!

Before you begin installation, read all instructions thoroughly.

Proper tools will improve the quality of installation and reduce the time required.

This installation requires:

- For N-Line, all-wheel drive Limited, SE, and SEL models: Lowering of the exhaust
- For Kona EV models: Trimming of plastic cover and plastic cover support tab

Periodic inspection of the trailer hitch should be performed to ensure all mounting hardware remains tight and structural components are secure.

To help prevent damage to the product or vehicle, refer to the specified torque specifications when securing hardware during the installation process.

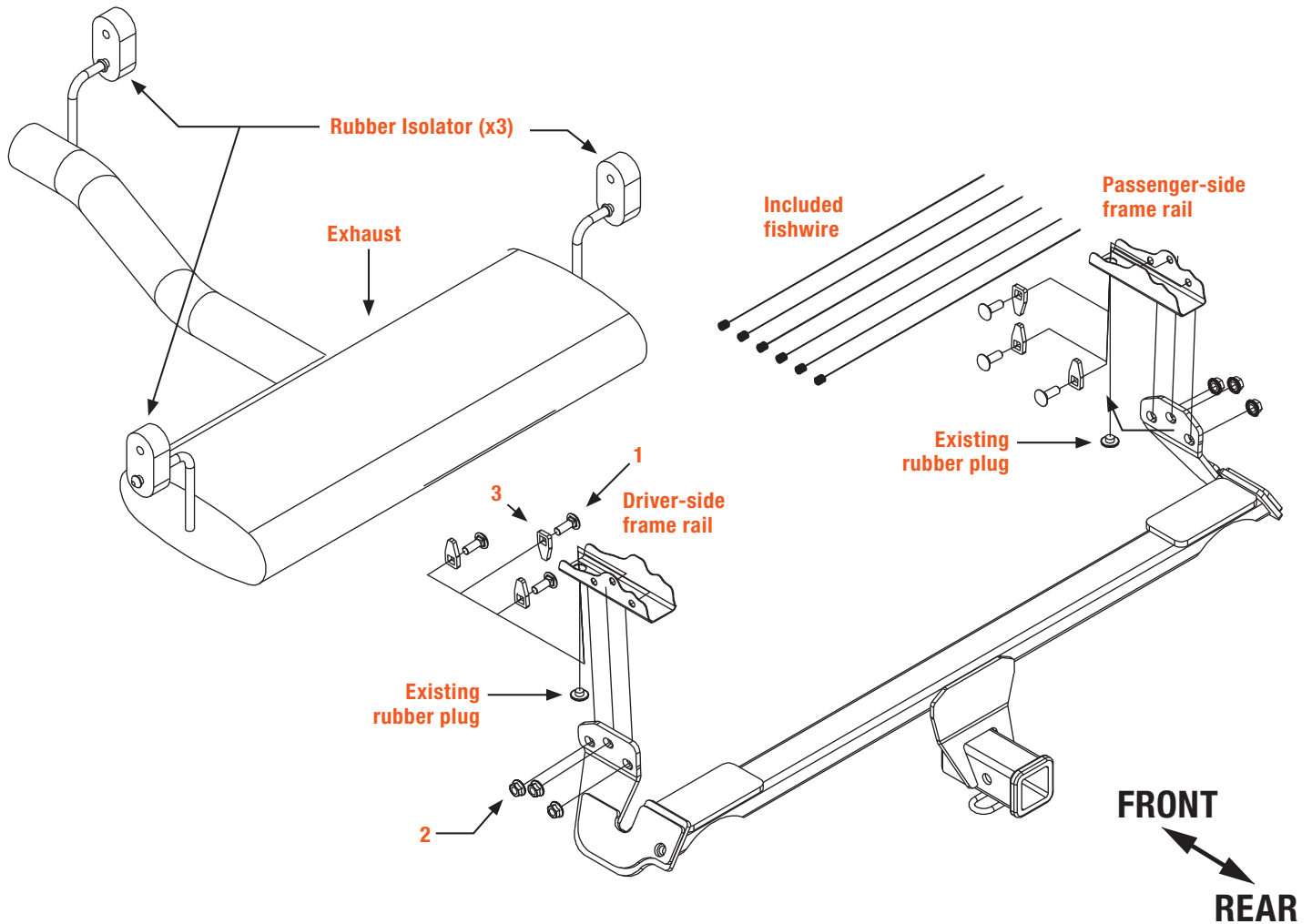
SAFETY INSTRUCTIONS

Safety glasses should be worn at all times while installing this product.

ASSEMBLY

Parts List

| Item | Qty | Description |
|------|-----|--|
| 1 | 6 | Carriage bolt, 7/16"- 14 x 1-1/4" |
| 2 | 6 | Serrated-flange nut, 7/16"- 14 |
| 3 | 6 | Square-hole spacer, 1.75" x .875" x .25" |



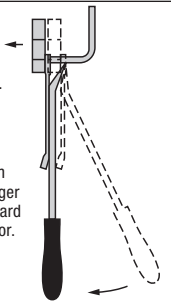
RUBBER ISOLATOR REMOVAL DIAGRAM

This technique can be used if exhaust hanger removal pliers are not available.

Using a 5/8" open end wrench, slide the wrench up to the rubber isolator, cradling the hanger rod as shown.

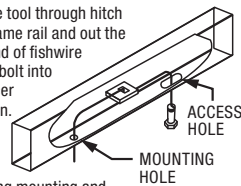
Place the flat edge of a pry bar between the wrench and the hanger stop or hanger rod. Then simply rotate the pry bar toward the wrench to remove the rubber isolator.

Note: Using a lubricant or soapy water on the hanger rod and the rubber isolator helps removal.



FISHWIRE TECHNIQUE

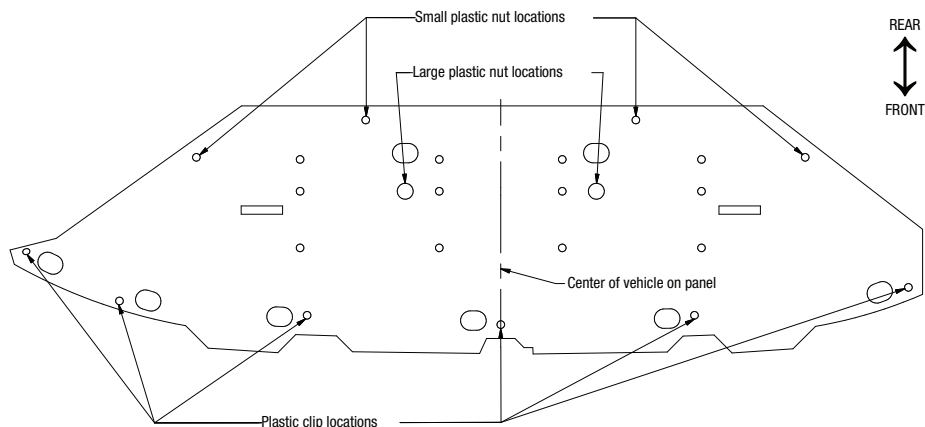
Insert coiled end of fishwire tool through hitch mounting hole in vehicle frame rail and out the access hole. Pass coiled end of fishwire through spacer and thread bolt into coil. Kink wire to keep spacer separate from bolt as shown. Pull fishwire, spacer and bolt through frame and out mounting hole. Use fishwire to guide hitch during mounting and prevent loss of bolt or spacer inside frame rail.



Step 1 (For Kona models with an exhaust, skip to step 3; for all other models with an exhaust, skip to step 4)

For Kona EV Models: Remove the six plastic clips and four small plastic nuts securing the lower cover in place. Gently pull the plastic cover straight down.

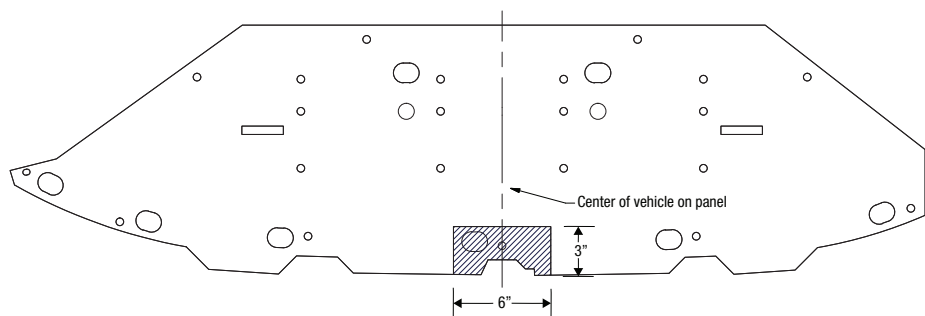
Note: If the plastic cover cannot be removed by pulling down, unscrew the two large plastic nuts by hand until plastic cover can be removed.



Step 2

For Kona EV Models: Mark and trim the fascia panel. See the trim diagram for approximate dimensions.

Set the plastic cover aside for reinstallation in step 11.

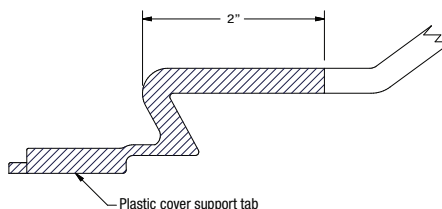


Step 3

For all Kona models: Remove and trim the plastic clip from the middle plastic cover support tab.

See the trim diagram for approximate dimensions.

Skip to step 6.

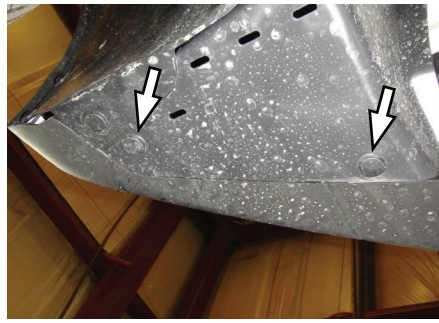


Step 4: (For N line models, skip to step 5)

For Limited, SE, and SEL models:

If there is an underbody panel on the passenger side frame rail, remove the underbody panel by removing two plastic clips and one nut.

Set the plastic cover aside for reinstallation in step 11.



Step 5: (For front-wheel drive Limited, SE, and SEL models, skip to step 6)

For all-wheel drive Limited, SE, and SEL models:

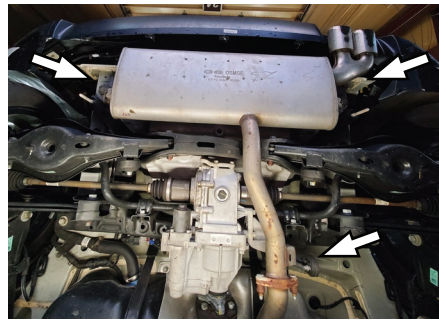
Lower the exhaust by removing the two rearmost exhaust hanger rods on both sides from the two rubber isolators.

For N Line and Kona N models:

Lower the exhaust by removing the three rearmost exhaust hanger rods on both sides from the three rubber isolators

Note: Use a stand to support the exhaust and prevent any damage.

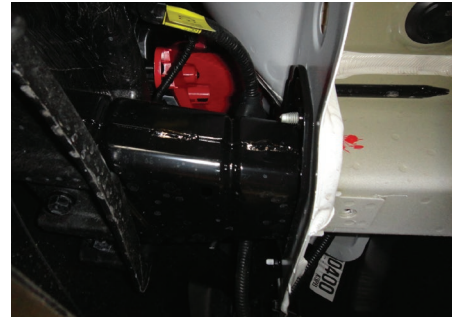
The exhaust will be reinstalled in step 11.



Step 6:

For all models:

Remove the electrical harness from the frame rail. Move the electrical harness from under the bumper beam to above the bumper beam, if applicable.



Step 7:

For all models:

Remove one rubber plug from the bottom of the frame rail on both sides, if applicable. Set aside the rubber plug for reinstallation in step 11.



Step 8:

For all models:

Fishwire three 7/16" carriage bolts (#1) and three square-hole spacers (#3) through the holes in the driver-side frame rail. Repeat on the passenger-side frame rail.

Note: Do not pull the carriage bolts through the frame rail holes in this step.



Step 9:

For all models:

Raise the hitch over the exhaust beginning on the passenger side. Gently pull the bumper fascia rearward, if needed. Feed the fishwires through the holes in the hitch on both sides. Raise the hitch into position and pull the three 7/16" carriage bolts (#1) through the holes in the hitch on both sides. Remove all fishwires and loosely secure with 7/16" serrated-flange nuts (#2).

Note: Be careful not to push the hardware into the frame when removing the fishwire. It may help to secure each nut after removing the fishwire one bolt at a time.



Step 10:

For all models:
Torque 7/16" hardware to 59 lb-ft.



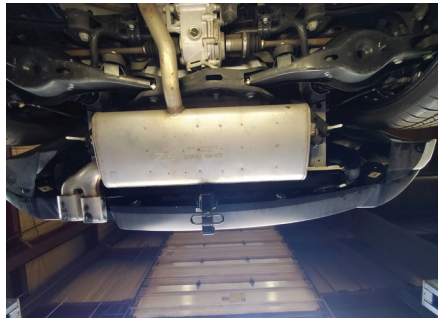
Step 11:

For front-wheel drive Limited, SE, and SEL models: Reinstall underbody panel, rubber plugs, and plastic clips removed in steps 4 and 7.

For all-wheel drive Limited, SE, and SEL models: Reinstall underbody panel, exhaust, rubber plugs, and plastic clips removed in steps 4, 5 and 7.

For N Line and Kona N models: Reinstall exhaust, rubber plugs, and plastic clips removed in steps 5 and 7.

For Kona EV models: Reinstall plastic cover, rubber plugs, and plastic clips removed in steps 1, 3 and 7.



Final Installed Image



TOWING BASICS & SAFETY INFORMATION

For information on safely towing your trailer, visit curtmfg.com/understanding-towing.