

INSTALLATION MANUAL

13582

Level of Difficulty

Moderate

Installation difficulty levels are based on time and effort involved and may vary depending on the installer level of expertise, condition of the vehicle and proper tools and equipment.

Weight Carrying Capacity

Gross trailer weight (GTW)	3,500 lbs.
Tongue weight (TW)	350 lbs.

Parts List

Item	Qty	Description
1	2	Fishwire, 7/16"
2	2	Square hole spacer, .25" x .88 x 2.25"
3	2	Carriage bolts, 7/16"-14 UNC, 1-3/4"
4	2	Serrated-flange nut, 7/16"-14 UNC
5	4	Hex head cap screw, M8 x 1.25"
6	4	Flat washer, 5/16"
7	4	Lock washer, 5/16"

Tools Required

Socket, 10mm	Ratchet
Socket, 12mm	Socket extension, 3"
Socket, 13mm	Exhaust isolator removal tool
Socket, 17mm	Die grinder
Socket, 3/4"	Aviation shears / knife
Torque wrench	--

* For a tools reference guide visit curtmfg.com/trailer-hitch-installation

⚠ WARNING

Never exceed the vehicle manufacturer's recommended towing capacity.

Product Photo



NOTICE

Visit www.curtmfg.com for a full-color copy of this instruction manual, as well as helpful videos, guides and much more!

Before you begin installation, read all instructions thoroughly.

Proper tools will improve the quality of installation and reduce the time required.

This installation requires:

- Temporarily lower exhaust
- No drilling required
- Hole enlargement required
- Fascia trimming required
- Recovery loop removal required

Periodic inspection of the trailer hitch should be performed to ensure all mounting hardware remains tight and structural components are secure.

To help prevent damage to the product or vehicle, refer to the specified torque specifications when securing hardware during the installation process.

SAFETY INSTRUCTIONS

Safety glasses should be worn at all times while installing this product.

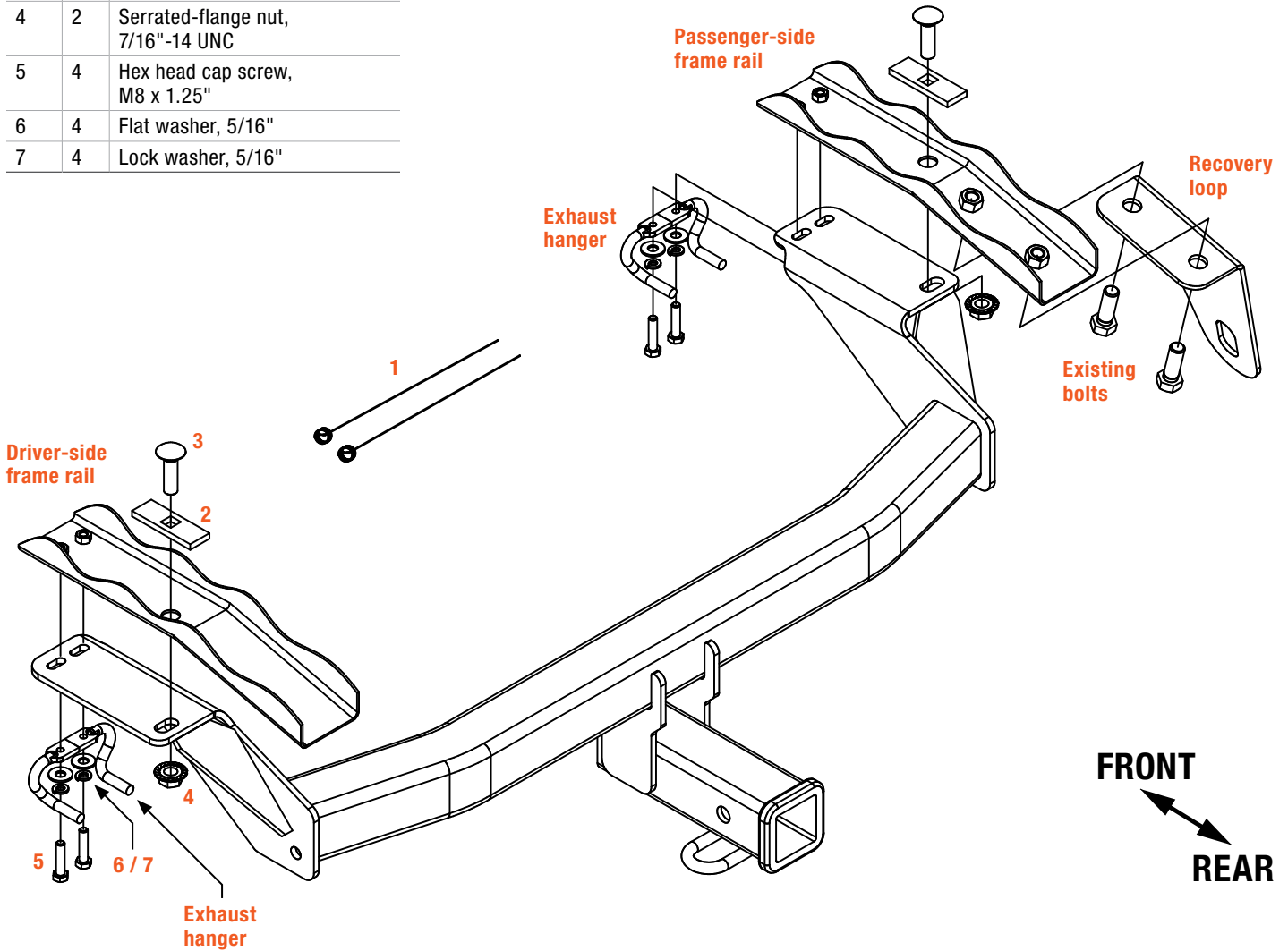
Product Registration and Warranty

CURT stands behind our products with industry-leading warranties. To get copies of the product warranties, register your purchase or provide feedback, visit: warranty.curtgroup.com/surveys

ASSEMBLY

Parts List

Item	Qty	Description
1	2	Fishwire, 7/16"
2	2	Square hole spacer, .25" x .88 x 2.25"
3	2	Carriage bolts, 7/16"-14 UNC, 1-3/4"
4	2	Serrated-flange nut, 7/16"-14 UNC
5	4	Hex head cap screw, M8 x 1.25"
6	4	Flat washer, 5/16"
7	4	Lock washer, 5/16"



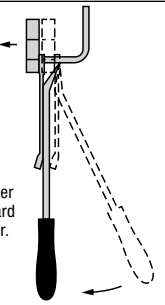
RUBBER ISOLATOR REMOVAL DIAGRAM

This technique can be used if exhaust hanger removal pliers are not available.

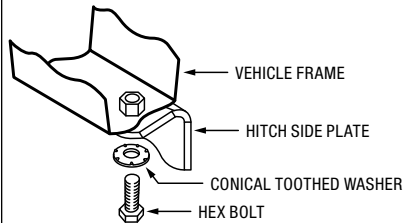
Using a 5/8" open end wrench, slide the wrench up to the rubber isolator, cradling the hanger rod as shown.

Place the flat edge of a pry bar between the wrench and the hanger stop or hanger rod. Then simply rotate the pry bar toward the wrench to remove the rubber isolator.

Note: Using a lubricant or soapy water on the hanger rod and the rubber isolator helps removal.



CONICAL TOOTHED WASHER ORIENTATION

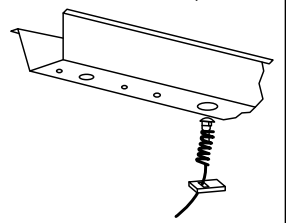


REVERSE PULL FISHWIRE TECHNIQUE

Attach the fishwire to the carriage bolt and slide the spacer onto the fishwire.

Push the bolt through the hole followed by the spacer, as shown.

Pull the bolt back into position, protruding from the frame.



Step 1

Remove the two bolts from the lower bumper cover access doors with a 10mm socket.



Step 2

Remove the two bolts from the recovery loop with a 17mm socket.



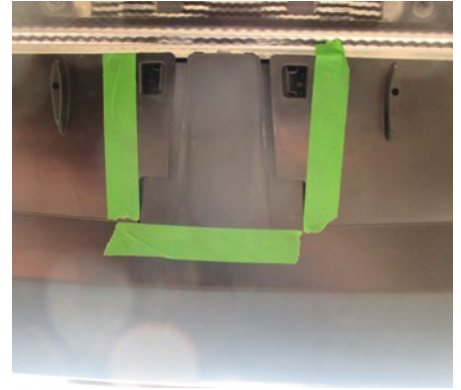
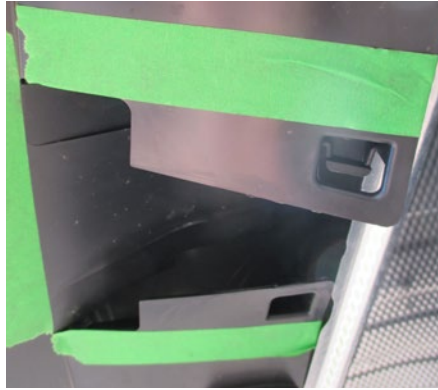
Step 3

Lower the exhaust by unhooking the two rubber isolators from the muffler, one on each side. Remove the rubber isolators from the mounting brackets to gain access to the mounting bracket bolts. Remove the two brackets by removing the two bolts on each bracket with a 12mm socket. Return the bolts to the vehicle owner.



Step 4

Trim the lower bumper cover access doors and center lower bumper tab as shown in the image to the right.



Step 5

Remove the rubber frame plugs from the bottom of the frame rails on both sides. Using the die grinder, enlarge the holes to accept the supplied carriage bolts and square hole spacers.



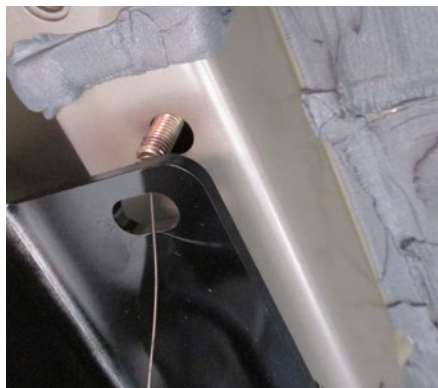
Step 6

Reverse fishwire the carriage bolts (#3) and spacers (#2) into each frame rail, leaving the fishwires attached.



Step 7

Raise the hitch into position by angling the side plates over the exhaust pipes and the main cross member tube over the bumper cover and into the bumper cavity. Make sure to thread the fishwires into the mounting holes while raising the hitch into position.



Step 8

Loosely install the supplied M8 bolts (#5), 5/16" lock and flat washers (#6, #7) with a 13mm socket into the exhaust mounting brackets with the hitch side plate between the frame and the bracket. Remove the 1/2" fishwires and install the supplied hex flange nuts.



Step 9

Torque all M8 bolts to 23 ft-lbs. and all 1/2" fasteners to 110 ft-lbs.



Step 10

Reinstall the exhaust isolators, exhaust and access door bolts.

Optional: If desired, reinstall the recovery loop backwards from its original position into previously used frame weldnuts with original fasteners.



Final Installed Image



TOWING BASICS & SAFETY INFORMATION

For information on safely towing your trailer, visit curtmfg.com/understanding-towing.