

INSTALLATION MANUAL

13578

Level of Difficulty

Difficult

Installation difficulty levels are based on time and effort involved and may vary depending on the installer level of expertise, condition of the vehicle and proper tools and equipment.

Weight Carrying Capacity

Gross trailer weight (GTW)	5,000 lbs.
Tongue weight (TW)	750 lbs.

Parts List

Item	Qty	Description
1	1	Trailer hitch
2	8	Rivet, M6, black

Tools Required

Ratchet	Rotary cutting tool
Socket, 8mm	Small punch
Socket, 10mm	Plastic rivet gun
Socket, 18mm	Tape measure
Torque wrench	Safety glasses
Pry tool	--

* For a tools reference guide visit curtmfg.com/trailer-hitch-installation

⚠ WARNING

Never exceed the vehicle manufacturer's recommended towing capacity.

Product Photo



NOTICE

Visit www.curtmfg.com for a full-color copy of this instruction manual, as well as helpful videos, guides and much more!

Before you begin installation, read all instructions thoroughly.

Proper tools will improve the quality of installation and reduce the time required.

This installation requires:

- Trimming of underbody panel

Periodic inspection of the trailer hitch should be performed to ensure all mounting hardware remains tight and structural components are secure.

To help prevent damage to the product or vehicle, refer to the specified torque specifications when securing hardware during the installation process.

SAFETY INSTRUCTIONS

Safety glasses should be worn at all times while installing this product.

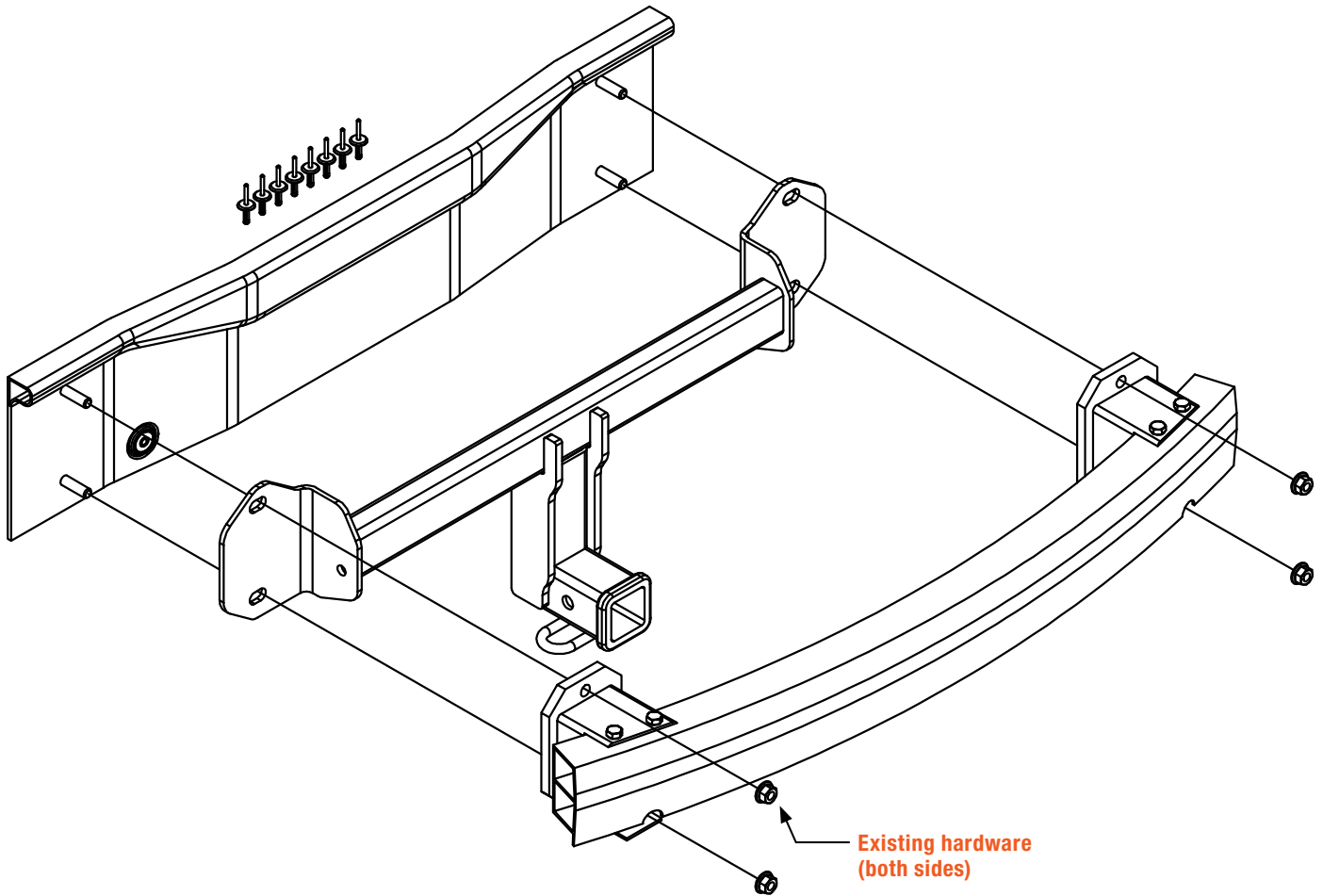
Product Registration and Warranty

CURT stands behind our products with industry-leading warranties. To get copies of the product warranties, register your purchase or provide feedback, visit: warranty.curtgroup.com/surveys

ASSEMBLY

Parts List

Item	Qty	Description
1	1	Trailer hitch
2	8	Rivet, M6, black



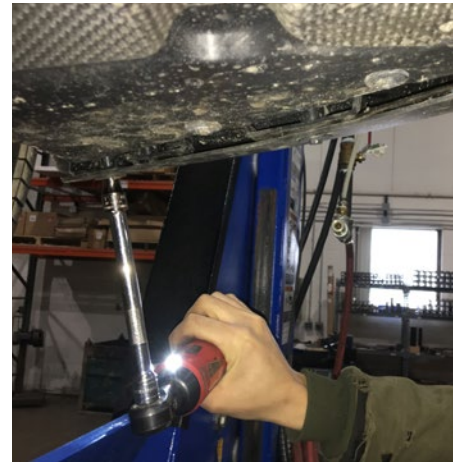
Step 1

Remove underbody panel by removing ten fasteners using an 8mm socket .



Step 2

Located on the bottom of the rear fascia, remove three fasteners on each side using an 8mm socket. Inside the wheel well trim, remove one fastener on each side using an 8mm socket.



Step 3

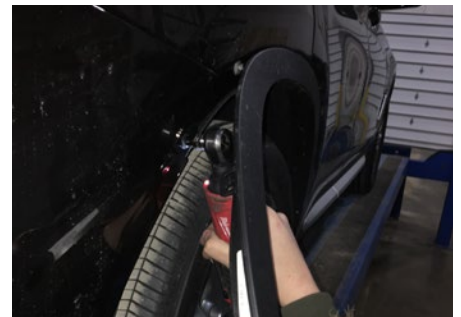
Remove three rivets from the wheel well trim from above each rear tire. To remove the rivets, push small center rod through the rivet with a small punch. Pry rivets from the trim.

Note: Replacement rivets are included.



Step 4

Remove two fasteners from each side of bumper cover an using 8mm socket which are now accessible due to wheel well trim removal.



Step 5

Remove one plastic clip on each side using a pry tool. Gently unclip the plastic covers located on the inside of each taillight.



Step 6

Located in the trunk of vehicle, remove the interior panel to access taillight and remove the exposed fastener using 10mm socket.



Step 7

Remove two nuts from each taillight using a 10mm socket. Unplug the electrical harness and gently remove each taillight.



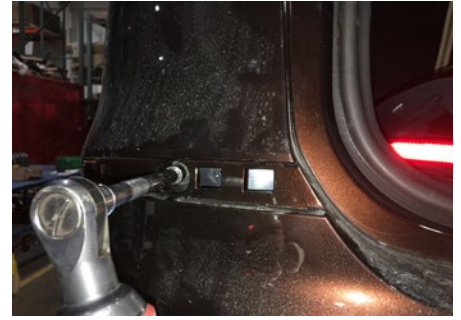
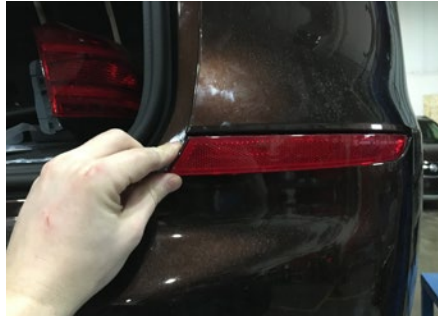
Step 8

Remove one fastener from the rear fascia under each taillight.



Step 9

Gently unclip one reflector on each side of the rear fascia to access and remove one fastener on each side using an 8mm socket.



Step 10

Carefully remove the rear fascia by releasing the press-in tabs along the top portion of the rear fascia. If present, unclip electrical the harness.



Step 11

Remove the bumper beam by removing two nuts on each side using an 18mm socket. Also remove one nut on each side from the exhaust hanger that is attached to the bumper beam using a 13mm socket.

Remove the passenger-side hanger from the isolator and return to owner. If present, unclip the electrical harness.



Step 12

Raise the hitch and bumper beam into position onto the vehicle studs and secure to vehicle using the existing vehicle hardware. Use vehicle hardware to reattach the exhaust hangers.



Step 13

Torque all M12 hardware to 86 ft-lbs.

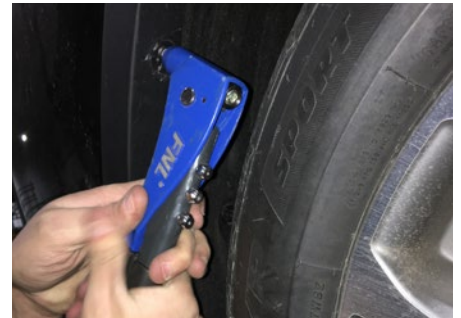
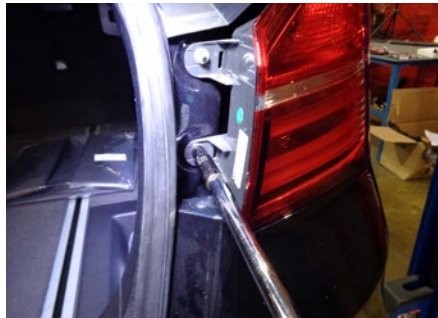
Torque all M8 hardware to 23 ft-lbs.



Step 14

Reinstall the rear fascia and taillights by reassembling components removed in steps 2 through 10 in reverse order.

Note: A plastic rivet gun is required to fasten the supplied rivets when reinstalling the wheel well trim.



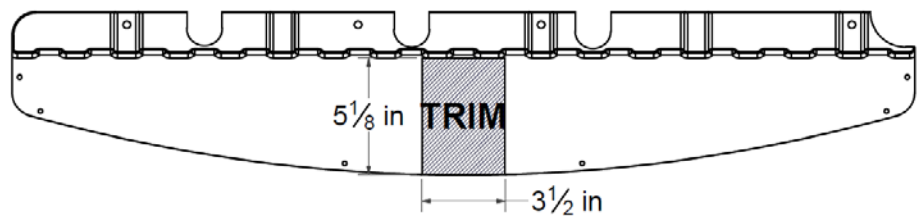
Step 15

Trim the underbody panel. Use the image to the right as a reference.

Reinstall underbody panel as removed in step 1.

Note: All dimensions are approximate, confirm fit prior to trimming.

UNDERBODY PANEL TRIM DIAGRAM



Final Installed Image



TOWING BASICS & SAFETY INFORMATION

For information on safely towing your trailer, visit [curtmfg.com/understanding-towing](https://www.curtmfg.com/understanding-towing).