

INSTALLATION MANUAL

13495

Level of Difficulty

Easy

Installation difficulty levels are based on time and effort involved and may vary depending on the installer level of expertise, condition of the vehicle and proper tools and equipment.

Weight Carrying Capacity

Gross trailer weight (GTW)	2,000 lbs.
Tongue weight (TW)	300 lbs.

Parts List

Item	Qty	Description
1	1	Trailer hitch

Tools Required

Ratchet	Flathead screwdriver
Socket, 7mm	Tape measure
Socket, 15mm	Panel trim removal tool
Socket extension, 6"	Tape
Torque wrench	Reciprocating saw / rotary tool
Torx bit, T-15	--

* For a tools reference guide visit curtmfg.com/trailer-hitch-installation

⚠ WARNING

Never exceed the vehicle manufacturer's recommended towing capacity.

Product Photo



⚠ CAUTION

Use caution when trimming lower fascia

NOTICE

Visit www.curtmfg.com for a full-color copy of this instruction manual, as well as helpful videos, guides and much more!

Before you begin installation, read all instructions thoroughly.

Proper tools will improve the quality of installation and reduce the time required.

This installation requires:

- This installation requires trimming of lower fascia panel

Periodic inspection of the trailer hitch should be performed to ensure all mounting hardware remains tight and structural components are secure.

To help prevent damage to the product or vehicle, refer to the specified torque specifications when securing hardware during the installation process.

SAFETY INSTRUCTIONS

Safety glasses should be worn at all times while installing this product.

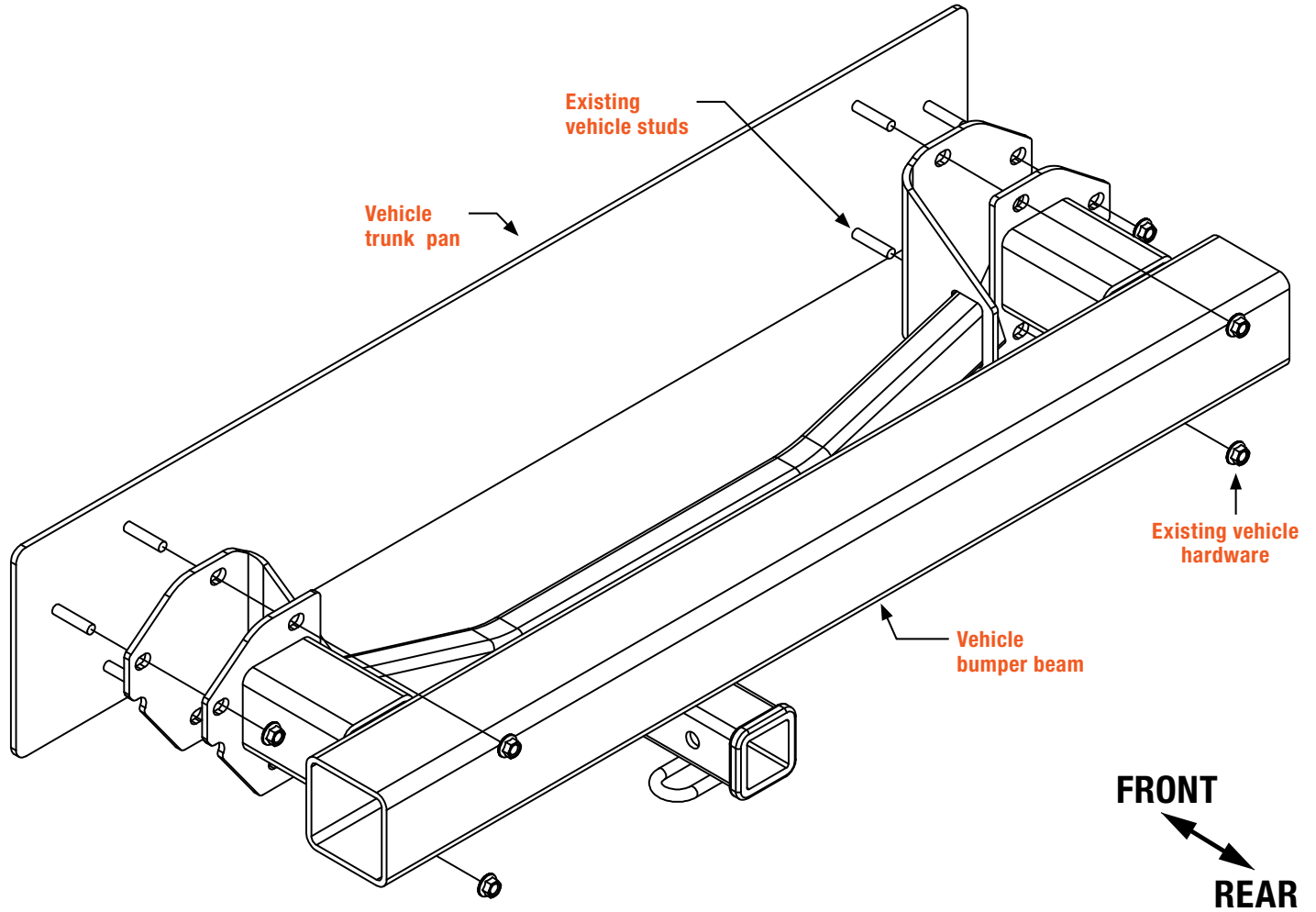
Product Registration and Warranty

CURT stands behind our products with industry-leading warranties. To get copies of the product warranties, register your purchase or provide feedback, visit: warranty.curtgroup.com/surveys

ASSEMBLY

Parts List

Item	Qty	Description
1	1	Trailer hitch



Step 1

Open the rear hatch to expose two taillight trim panels. One is located near each taillight.

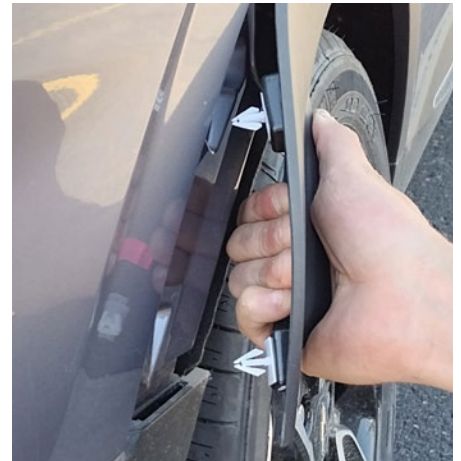
Remove the trim panels by using a trim tool to remove two round plastic covers. Use a T-15 torx bit to remove the two screws from each trim panel.



Step 2

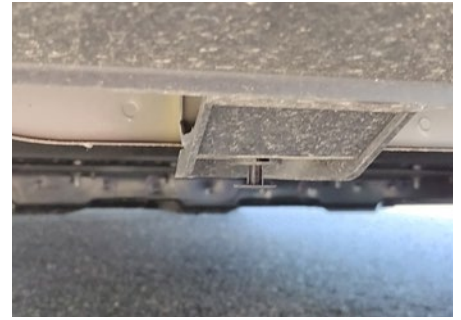
Remove the two screws securing the wheel well liner to the rear bumper fascia using a T-15 torx bit. These fasteners are located on the bottom rear part of each wheel well on the back of the vehicle.

Carefully begin removing the plastic wheel well trim starting from the rear-most part of the trim working forward. Remove until the top edge of the rear fascia is exposed. Remove one bolt from behind the wheel well trim on each side of the vehicle using a 7mm socket.



Step 3

Remove one screw on each side from the bottom of the tailgate / hatch area using a T-15 torx bit. Remove two push fasteners and two screws from the bottom of the fascia using a T-15 Torx bit and flathead screwdriver. Remove the fascia starting at the wheel wells and gently pulling on the fascia working toward the middle of the vehicle. If present, be sure to disconnect the wiring harness located on the driver side.



Step 4

Remove the electrical harness from the bumper beam so that the bumper beam can be removed. Use a 15mm socket to remove the six M10 nuts securing the bumper beam to the vehicle. Remove the bumper beam and metal bracket that supports the wiring harness.

Note: Temporarily secure electrical harness bracket to vehicle using tape as to not damage the harness while hitch is being installed.



Step 5

Raise the hitch and bumper beam into position back onto the existing vehicle studs. Be sure to reinstall the wiring harness bracket that was removed in step 4. Secure the hitch, bumper beam and bracket using the six nuts removed during step 4. Be sure to reconnect the wiring harness to the bumper beam.

Torque M10 hardware to 32 ft lbs.



Step 6

Mark out and trim lower fascia using trim diagram as reference.



Step 7

Reinstall the fascia, making sure to reconnect the wiring harness.

Repeat steps 1 through 3 in reverse order to finish the installation.

Final Installed Image



TOWING BASICS & SAFETY INFORMATION

For information on safely towing your trailer, visit curtmfg.com/understanding-towing.