

# INSTALLATION MANUAL

# 13477

## Level of Difficulty

Difficult

Installation difficulty levels are based on time and effort involved and may vary depending on the installer level of expertise, condition of the vehicle and proper tools and equipment.

## Weight Carrying Capacity

|                            |            |
|----------------------------|------------|
| Gross trailer weight (GTW) | 6,000 lbs. |
| Tongue weight (TW)         | 900 lbs.   |

## Parts List

Uses factory hardware for installation

## Tools Required

|                      |                |
|----------------------|----------------|
| Torque wrench        | Ratchet        |
| Socket, 8mm          | Torx bit, T-40 |
| Socket, 10mm         | Socket, E12    |
| Socket, 18mm         | Screwdriver    |
| Socket extension, 8" | Pry tool       |
| Aviation shears      | Safety glasses |

\* For a tools reference guide visit [curtmfg.com/trailer-hitch-installation](http://curtmfg.com/trailer-hitch-installation)

## WARNING

Never exceed the vehicle manufacturer's recommended towing capacity.

## Product Photo



## NOTICE

Visit [www.curtmfg.com](http://www.curtmfg.com) for a full-color copy of this instruction manual, as well as helpful videos, guides and much more!

Before you begin installation, read all instructions thoroughly.

Proper tools will improve the quality of installation and reduce the time required.

This installation requires:

- Trimming of the heat shield and bumper fascia
- Temporary part removal

Periodic inspection of the trailer hitch should be performed to ensure all mounting hardware remains tight and structural components are secure.

To help prevent damage to the product or vehicle, refer to the specified torque specifications when securing hardware during the installation process.

## SAFETY INSTRUCTIONS

Safety glasses should be worn at all times while installing this product.

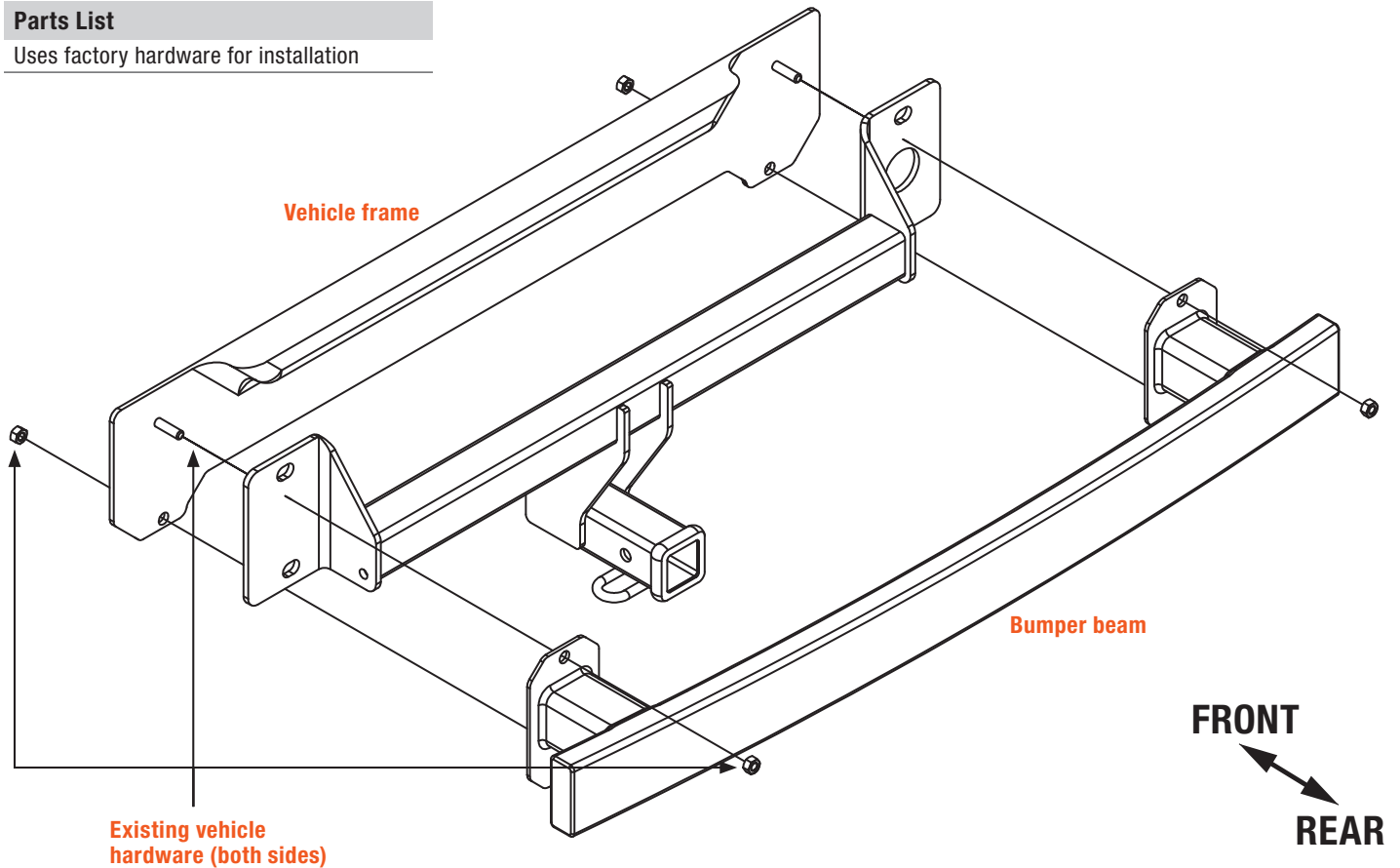
## Product Registration and Warranty

CURT stands behind our products with industry-leading warranties. To get copies of the product warranties, register your purchase or provide feedback, visit: [warranty.curtgroup.com/surveys](http://warranty.curtgroup.com/surveys)

# ASSEMBLY

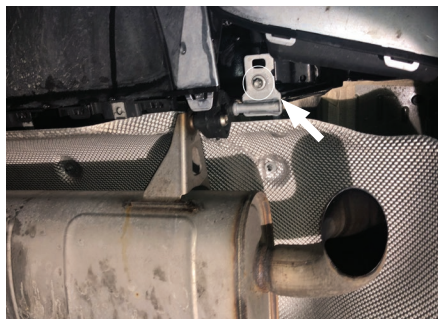
## Parts List

Uses factory hardware for installation



## Step 1

Using a T-40 Torx bit, remove the rear exhaust hangers by removing two screws, one on each side. Lower the muffler by removing the rubber exhaust hanger.



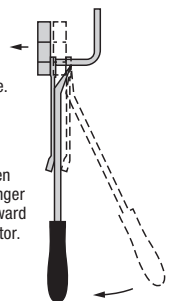
### RUBBER ISOLATOR REMOVAL DIAGRAM

This technique can be used if exhaust hanger removal pliers are not available.

Using a 5/8" open end wrench, slide the wrench up to the rubber isolator, cradling the hanger rod as shown.

Place the flat edge of a pry bar between the wrench and the hanger stop or hanger rod. Then simply rotate the pry bar toward the wrench to remove the rubber isolator.

**Note:** Using a lubricant or soapy water on the hanger rod and the rubber isolator helps removal.



## Step 2

Using a 10mm socket, remove the lower rear fascia by locating and removing six screws, three on each side. Using a pry tool, remove four push pins, two on each side.

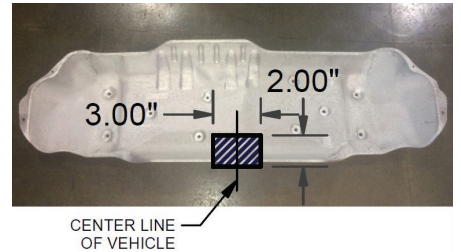
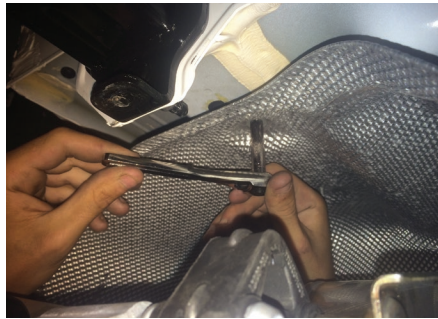
**Note:** To remove the lower rear fascia, start by partially removing the rear wheel trim piece. Gently pull the trim piece away from the vehicle by releasing the press in tabs along the top portion of the fascia.



## Step 3

Using an 8mm socket, remove the heat shield by removing 10 nuts. Trim a 2" x 3" notch using aviation shears, as shown. Set aside for reinstallation.

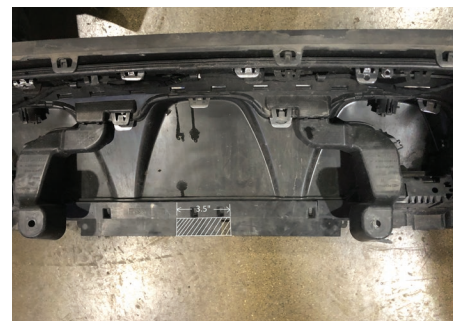
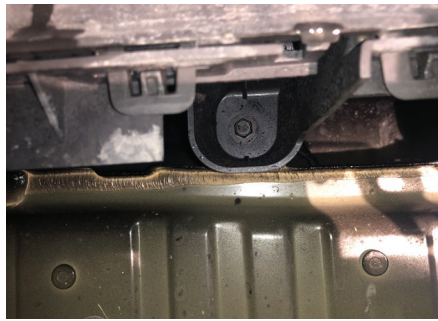
**Note:** All dimension are approximate, confirm fit prior to trimming.



## Step 4

Remove two bolts under the bumper fascia. Unplug the rear bumper sensor harness and remove the bumper fascia by pushing out all clips from inside of the fascia.

Cut a 3-1/2" slot from the opening to the edge.





### Step 5

Using an 18mm socket and extension, remove the bumper beam hardware and set the bumper beam aside for reinstallation.



### Step 6

Place the trailer hitch on the rear of the vehicle frame. Place the bumper beam over the hitch and secure with the removed factory M12 hardware.

Torque all M12 hardware to 55 ft-lbs.

Reinstall bumper fascia, heat shield and exhaust hanger.



### Final Installed Image



### TOWING BASICS & SAFETY INFORMATION

For information on safely towing your trailer, visit [curtmfg.com/understanding-towing](http://curtmfg.com/understanding-towing).