

13290

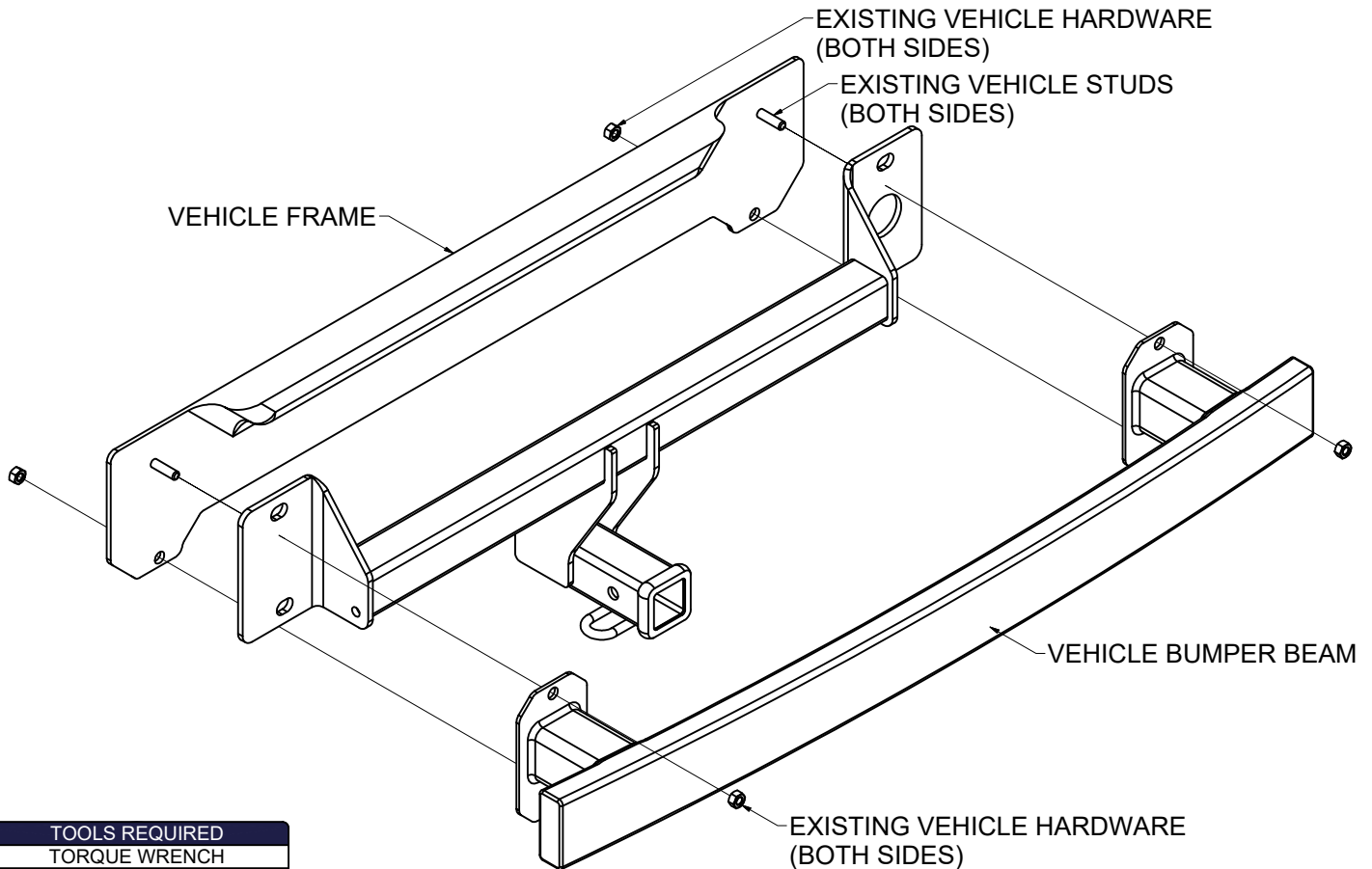
MERCEDES GLC300, GLC43 AMG

7/28/2020

GROSS LOAD CAPACITY WHEN USED AS A WEIGHT CARRYING HITCH: 6,000 LBS. TRAILER WEIGHT & 900 LBS. TONGUE WEIGHT.

WARNING: *** DO NOT EXCEED VEHICLE MANUFACTURER'S RECOMMENDED TOWING CAPACITY. ***

FOR MORE INFORMATION LOG ONTO WWW.CURTMFG.COM & FOR HELPFUL TOWING TIPS LOG ONTO WWW.HITCHINFO.COM
HAVING INSTALLATION QUESTIONS? CALL TECHNICAL SUPPORT AT 1-877-287-8634



TOOLS REQUIRED
TORQUE WRENCH
RATCHET
8" SOCKET EXTENSION
8mm, 10mm, 18mm SOCKETS
T40, E12 TORXBIT SOCKETS
SCREW DRIVER
AVIATION SHEARS

HITCH WEIGHT: 41 LBS.

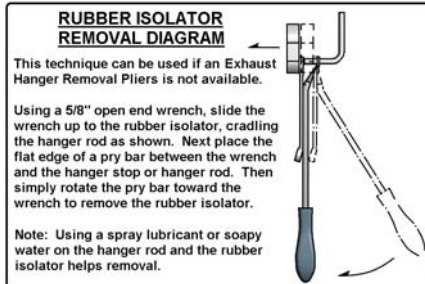
INSTALL TIME

PROFESSIONAL: 45 MINUTES

NOVICE (DIY): 90 MINUTES

INSTALL NOTES:

- TEMPORARILY REMOVE HEAT SHIELD AND LOWER FASCIA
- NO DRILLING REQUIRED
- LOWER EXHAUST
- EXHAUST HEAT SHIELD TRIM REQUIRED



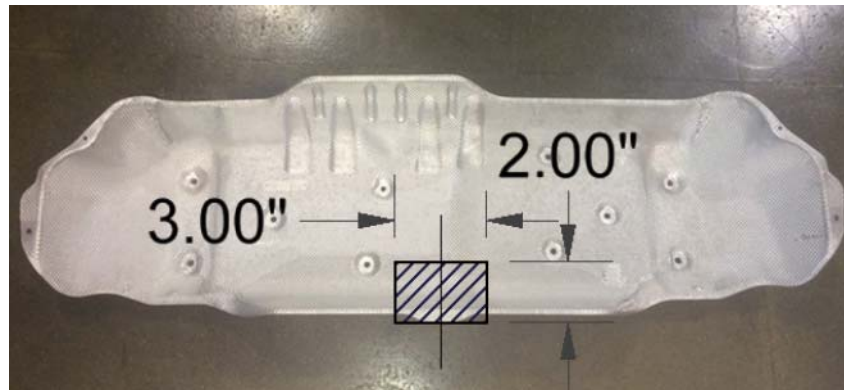
PERIODICALLY CHECK THIS RECEIVER HITCH TO ENSURE THAT ALL FASTENERS ARE TIGHT AND THAT ALL STRUCTURAL COMPONENTS ARE SOUND.



Scan for more information

CURT Manufacturing LLC., warrants this product to be free of defects in material and/or workmanship at the time of retail purchase by the original purchaser. If the product is found to be defective, CURT Manufacturing LLC., may repair or replace the product, at their option, when the product is returned, prepaid, with proof of purchase. Alteration to, misuse of, or improper installation of this product voids the warranty. CURT Manufacturing LLC.'s liability is limited to repair or replacement of products found to be defective, and specifically excludes liability for incidental or consequential loss or damage.

This product complies with safety specifications and requirements for connecting devices and towing systems of the state of New York, V.E.S.C.Regulation V-5 and SAE J684.



HEAT SHIELD TRIM DIAGRAM

INSTALLATION STEPS

1. Remove exhaust tips by removing (4) screws (2) on each side using T-40 Torxbit socket. After screws are removed gently remove exhaust tips and set aside for reinstallation.
2. Lower exhaust by removing (3) rubber isolators. (As shown in the rubber isolator removal diagram)
3. Remove lower rear fascia by locating and removing (6) screws (3) on each side using 10mm socket and (4) push pins (2) on each side using pry tool. Unclip electrical harnesses.
NOTE: To remove lower rear fascia start by partially removing rear wheel trim piece and gently pull away from vehicle by releasing press in tabs along top portion of fascia.
4. Remove heat shield by removing (10) nuts using 8mm socket, and trim 2.00" x 3.00" using aviation shears as shown in the trim diagram. Set aside for reinstallation.
NOTE: All dimensions are approximate, confirm fit prior to trimming.
5. Remove bumper beam by removing M12 hardware using 18mm socket. Set aside for reinstallation.
NOTE: Removing exhaust bracket from bumper beam by removing (2) screws (1) on each side using E-12 inverted torxbit may ease installation.
6. Install hitch on rear of vehicle frame using existing studs. Reinstall bumper beam over hitch. Loosely secure M12 hardware.
7. Torque all M12 hardware to 55 ft-lbs.
8. Reinstall exhaust bracket if removed in step 5. Reinstall trimmed heat shield removed in step 4. Reinstall lower rear fascia removed in step 3. Raise exhaust back in position. Reinstall exhaust tips removed in step 1. Reinstall all hardware removed.

Installation Completed

PERIODICALLY CHECK THIS RECEIVER HITCH TO ENSURE THAT ALL FASTENERS ARE TIGHT AND THAT ALL STRUCTURAL COMPONENTS ARE SOUND.

CURT Manufacturing LLC., warrants this product to be free of defects in material and/or workmanship at the time of retail purchase by the original purchaser. If the product is found to be defective, CURT Manufacturing LLC., may repair or replace the product, at their option, when the product is returned, prepaid, with proof of purchase. Alteration to, misuse of, or improper installation of this product voids the warranty. CURT Manufacturing LLC.'s liability is limited to repair or replacement of products found to be defective, and specifically excludes liability for incidental or consequential loss or damage.

This product complies with safety specifications and requirements for connecting devices and towing systems of the state of New York, V.E.S.C.Regulation V-5 and SAE J684.