



12120

INSTALLATION INSTRUCTIONS



Safety glasses should be worn at all times while installing this product.

YEARS: 2014

MAKE: ACURA

MODEL: RLX

STYLE: SEDAN



WARNING: NEVER EXCEED YOUR VEHICLE MANUFACTURER'S RECOMMENDED TOWING CAPACITY
For more information log onto www.curtmfg.com & for helpful towing tips log onto www.hitchinfo.com

WEIGHT CARRYING:

TRAILER WEIGHT: 3500 LBS.

TONGUE WEIGHT: 350 LBS.

WARNING:

ALL NON-TRAILER (WHEEL-LESS) LOADS APPLIED TO THIS PRODUCT MUST BE SUPPORTED BY 18050 STABILIZING STRAPS. PLEASE SEE THE CURT CATALOG OR VISIT US ONLINE AT WWW.CURTMFG.COM FOR FURTHER INFORMATION.

PRO INSTALL TIME: 30 MIN.

NOVICE INSTALL TIME: 60 MIN.

IF YOU ARE HESITANT TO UNDERTAKE
THIS TASK ON YOUR OWN, CONTACT AN AUTHORIZED
CURT INSTALLER FOR ADDITIONAL ASSISTANCE.

INSTALLATION REQUIRES:

SAFETY
GLASSESSPRAY
LUBRICANT10mm
3/4"
SOCKET

RATCHET

DRILL BIT
17/32"

ROTARY TOOL

TORQUE
WRENCHPOWER
DRILL

PRY BAR

AVIATION
SHEARS

INSTALLATION TIPS:

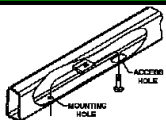
1. BEFORE YOU BEGIN INSTALLATION, READ ALL INSTRUCTIONS THOROUGHLY.
2. TO EASE INSTALLATION, 2 PEOPLE MAY BE REQUIRED.
3. USING PROPER TOOLS WILL GREATLY IMPROVE THE QUALITY OF THE INSTALL AND REDUCE THE TIME REQUIRED.
4. NEED HELP OR HAVE SOME QUESTIONS? CALL TECHNICAL SUPPORT AT 877.287.8634

LEVEL OF DIFFICULTY: MODERATE

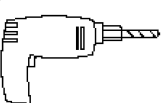
EASY

MODERATE

CHALLENGING



FISHWIRE HARDWARE



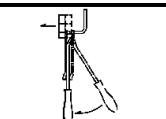
DRILLING REQUIRED



TRIM EXHAUST HEAT SHEILD



FRAME HOLE ENLARGEMENT



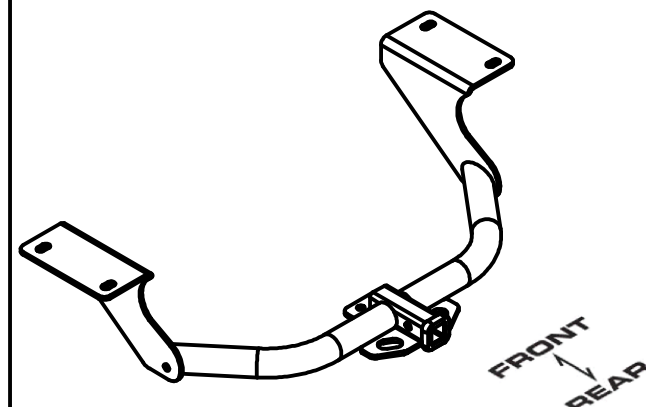
LOWER EXHAUST

VEHICLE PHOTO:



REPRESENTATIVE PHOTO

HITCH ILLUSTRATION:



MAKE SURE YOUR HITCH MATCHES



SCAN FOR
MORE INFO

PERIODICALLY CHECK THIS RECEIVER HITCH TO ENSURE ALL FASTENERS ARE TIGHT AND ALL STRUCTURAL COMPONENTS ARE SOUND

CURT Manufacturing LLC. warrants this product to be free of defects in material and/or workmanship at the time of retail purchase by the original purchaser. If the product is found to be defective, CURT Manufacturing LLC. may repair or replace the product at their option, when the product is returned, prepaid, with proof of purchase. Alteration to, misuse of, or improper installation of this product voids the warranty. CURT Manufacturing LLC.'s liability is limited to repair or replacement of products found to be defective, and specifically excludes liability for incidental or consequential loss or damage.

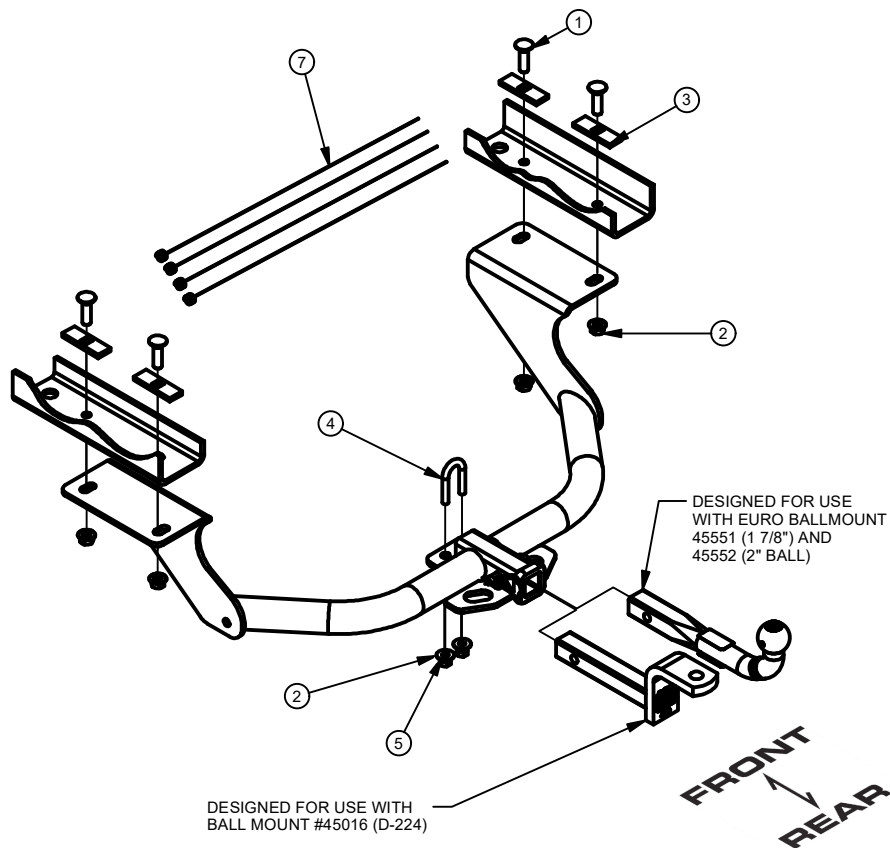
For more information log onto www.curtmfg.com

This product complies with safety specifications and requirements for connecting devices and towing systems of the state of New York, V.E.S.C.Regulation V-5 and SAE J684.

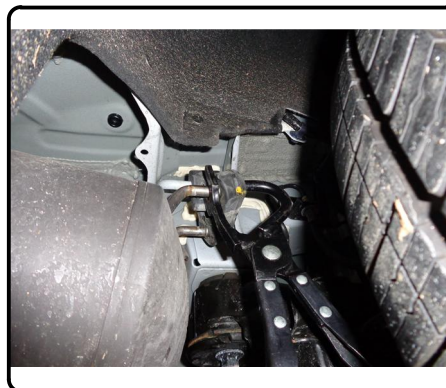
10/07/2020

INSTALLATION WALKTHROUGH:

Parts List			
ITEM	QTY	PART NUMBER	DESCRIPTION
1	4	10-10272	BOLT,CAR,1/2-13 UNC,1-3/4,GRD8,YZ
2	4	20-00062	NUT,SER-FLANGE,1/2-13 UNC,GRD8,YZ
3	4	CM-SP6	.188 x 1.00 x 3.00" SQUARE SPACER
4	1	3_8 - 16 x 1.00 WIDE x 2.25	U-BOLT,3/8-16 UNC,2-1/4,N/A,CZ
5	2	20-00166	NUT,HEX,3/8-16 UNC,GRD8,YZ
6	4	1_2 FISHWIRE	1/2" FISHWIRE
7	2	30-00148	WASHER,S-CON,3/8,YZ

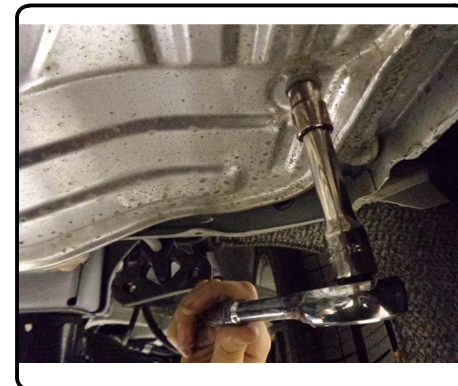
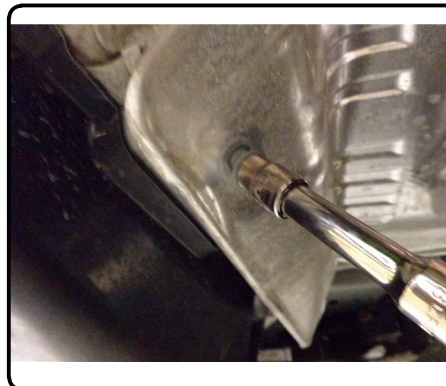


1. Lower exhaust by removing (4) rearmost isolators from the hangers.



2. Remove the heat shields on each side of the car, (8) bolts using the 10mm socket.

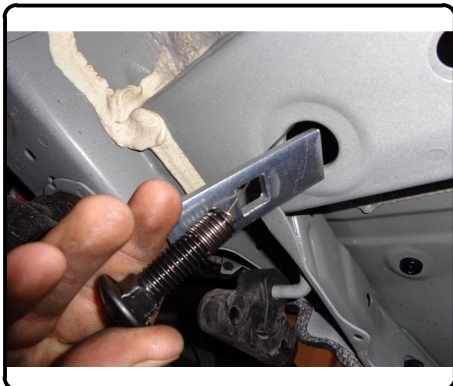
Set heat shields aside for trimming and reassembly.



For more information log onto www.curtmfg.com, & for helpful towing tips log onto www.hitchinfo.com

INSTALLATION WALKTHROUGH:

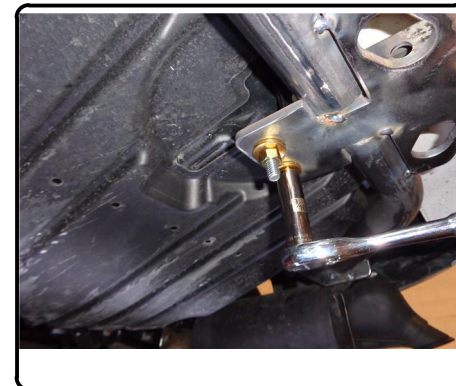
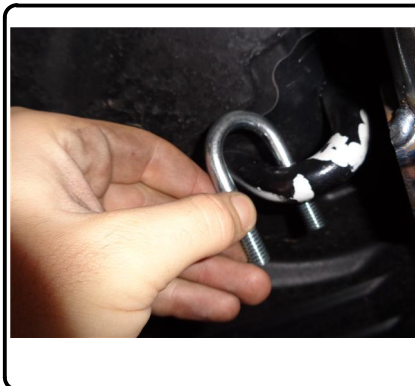
3. Enlarge (1) hole on each frame rail to $\varnothing 1.00$, then using the fishwire install (1) bolt with spacer in each frame rail. Using the fishwire feed, the spacer and 1/2" bolt into location. Raise hitch into position and loosely secure with 1/2" flange nuts.



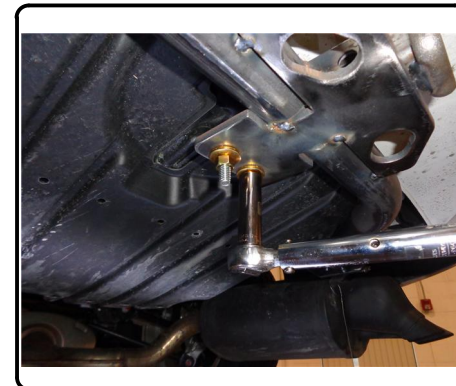
4. Drill (1) hole in each side of the frame rail for the remaining 1/2" fasteners using the hitch front mounting hole as a template. Fish remaining 1/2" bolts and spacers into location using the same technique shown in Step 3.



5. Install the U-bolt through the vehicle tow hook and hitch as shown below, install both washers and nuts evenly.

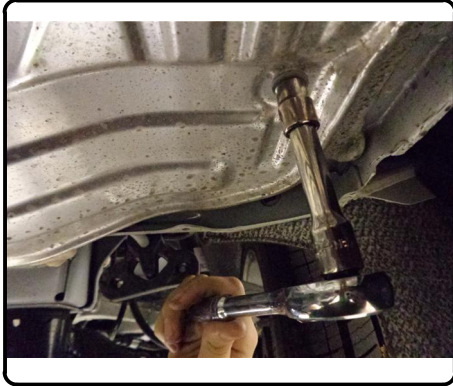


6. Torque all 1/2" fasteners to 110 lb-ft and 3/8" fasteners to 37 lb-ft.



INSTALLATION WALKTHROUGH:

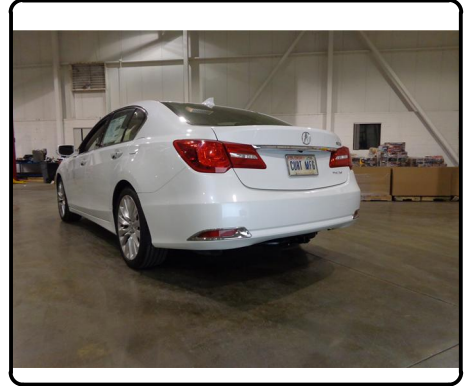
7. Trim each heat shield to clear the hitch and reinstall.



8. Move exhaust back into location, and reinstall rubber exhaust hangers.



9. Installation complete



12120

ACURA RLX

10/07/2020

GROSS LOAD CAPACITY WHEN USED AS A WEIGHT CARRYING HITCH: 3500 LBS. TRAILER WEIGHT & 350 LBS. TONGUE WEIGHT.

DO NOT EXCEED VEHICLE MANUFACTURER'S RECOMMENDED TOWING CAPACITY.

WARNING: ALL NON-TRAILER LOADS APPLIED TO THIS PRODUCT MUST BE SUPPORTED BY 18050 STABILIZING STRAPS.

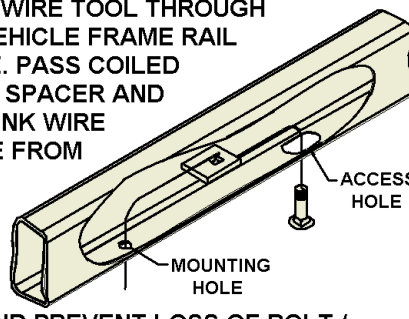
**** FAILURE TO PROPERLY SUPPORT NON-TRAILER LOADS WILL VOID PRODUCT WARRANTY****

HAVING INSTALLATION QUESTIONS? CALL TECHNICAL SUPPORT AT 877-287-8634

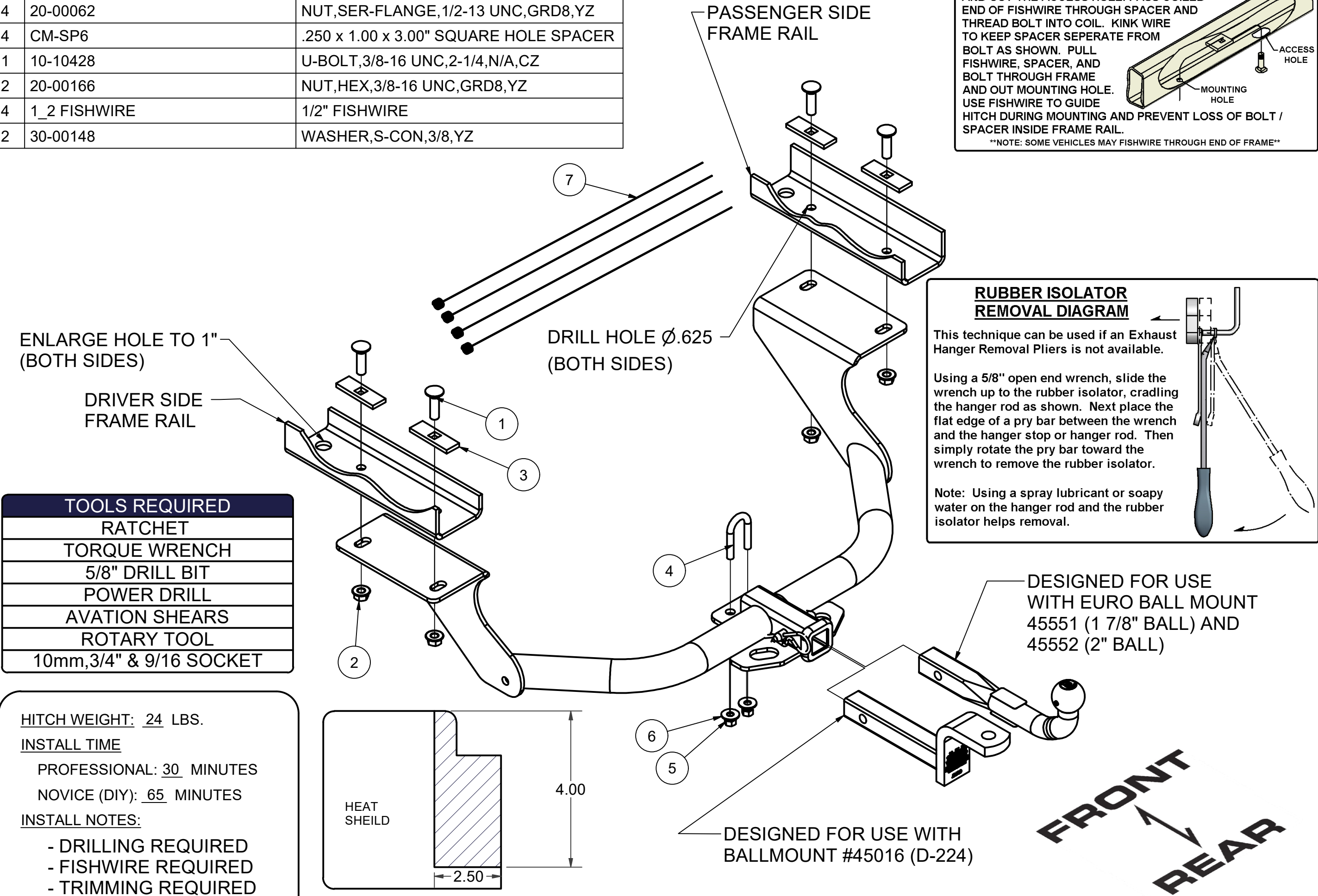
Parts List			
ITEM	QTY	PART NUMBER	DESCRIPTION
1	4	10-10272	BOLT,CAR,1/2-13 UNC,1-3/4,GRD8,YZ
2	4	20-00062	NUT,SER-FLANGE,1/2-13 UNC,GRD8,YZ
3	4	CM-SP6	.250 x 1.00 x 3.00" SQUARE HOLE SPACER
4	1	10-10428	U-BOLT,3/8-16 UNC,2-1/4,N/A,CZ
5	2	20-00166	NUT,HEX,3/8-16 UNC,GRD8,YZ
6	4	1_2 FISHWIRE	1/2" FISHWIRE
7	2	30-00148	WASHER,S-CON,3/8,YZ

FISHWIRE TECHNIQUE

INSERT COILED END OF FISHWIRE TOOL THROUGH HITCH MOUNTING HOLE IN VEHICLE FRAME RAIL AND OUT THE ACCESS HOLE. PASS COILED END OF FISHWIRE THROUGH SPACER AND THREAD BOLT INTO COIL. KINK WIRE TO KEEP SPACER SEPERATE FROM BOLT AS SHOWN. PULL FISHWIRE, SPACER, AND BOLT THROUGH FRAME AND OUT MOUNTING HOLE. USE FISHWIRE TO GUIDE HITCH DURING MOUNTING AND PREVENT LOSS OF BOLT / SPACER INSIDE FRAME RAIL.



NOTE: SOME VEHICLES MAY FISHWIRE THROUGH END OF FRAME



TOOLS REQUIRED
RATCHET
TORQUE WRENCH
5/8" DRILL BIT
POWER DRILL
AVATION SHEARS
ROTARY TOOL
10mm,3/4" & 9/16 SOCKET

HITCH WEIGHT: 24 LBS.

INSTALL TIME

PROFESSIONAL: 30 MINUTES

NOVICE (DIY): 65 MINUTES

INSTALL NOTES:

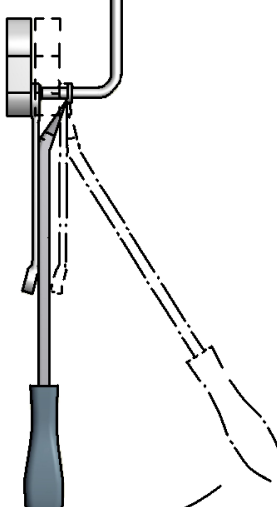
- DRILLING REQUIRED
- FISHWIRE REQUIRED
- TRIMMING REQUIRED

RUBBER ISOLATOR REMOVAL DIAGRAM

This technique can be used if an Exhaust Hanger Removal Pliers is not available.


Using a 5/8" open end wrench, slide the wrench up to the rubber isolator, cradling the hanger rod as shown. Next place the flat edge of a pry bar between the wrench and the hanger stop or hanger rod. Then simply rotate the pry bar toward the wrench to remove the rubber isolator.

Note: Using a spray lubricant or soapy water on the hanger rod and the rubber isolator helps removal.



INSTALLATION STEPS

1. Lower exhaust by removing (4) rearmost isolators from the hangers.
2. Remove the heat shields on each side of the car, (8) bolts using 10mm socket.
- 3.Enlarge (1) hole on each frame rail to Ø1.00, then using the fishwire install (1) bolt with spacer in each frame rail. Using the fishwire feed, the spacer and 1/2" bolt into location. Raise hitch into postion and loosely secure with 1/2" flange nuts.
4. Drill (1) hole in each side of the frame rail for the remaining 1/2" fastners using the hitch front mounting hole as a template. Fish remaining 1/2"bolts and spacers into location using the same technique shown in Step 3.
5. Install the U-bolt through the vehicle tow hook and hitch as shown below, install both washers and nuts evenly.
6. Torque all 1/2" fasteners to 110 lb-ft and 3/8" fasteners to 37 lb-ft.
7. Trim each heat shield to clear the hitch and reinstall.
8. Move exhaust back into location, and reinstall rubber exhaust hangers.



Scan for more information

PERIODICALLY CHECK THIS RECEIVER HITCH TO ENSURE THAT ALL FASTENERS ARE TIGHT AND THAT ALL STRUCTURAL COMPONENTS ARE SOUND.

Curt Manufacturing LLC., warrants this product to be free of defects in material and/or workmanship at the time of retail purchase by the original purchaser. If the product is found to be defective, Curt Manufacturing LLC., may repair or replace the product, at their option, when the product is returned, prepaid, with proof of purchase. Alteration to, misuse of, or improper installation of this product voids the warranty. Curt Manufacturing LLC.'s liability is limited to repair or replacement of products found to be defective, and specifically excludes liability for incidental or consequential loss or damage.