

11809**86-88 SAAB 9000 HATCHBACK**

11/13/2017

GROSS LOAD CAPACITY WHEN USED AS A WEIGHT CARRYING HITCH: 2,000 LBS. TRAILER WEIGHT & 200 LBS. TONGUE WEIGHT.

*****DO NOT EXCEED VEHICLE MANUFACTURER'S RECOMMENDED TOWING CAPACITY.*****

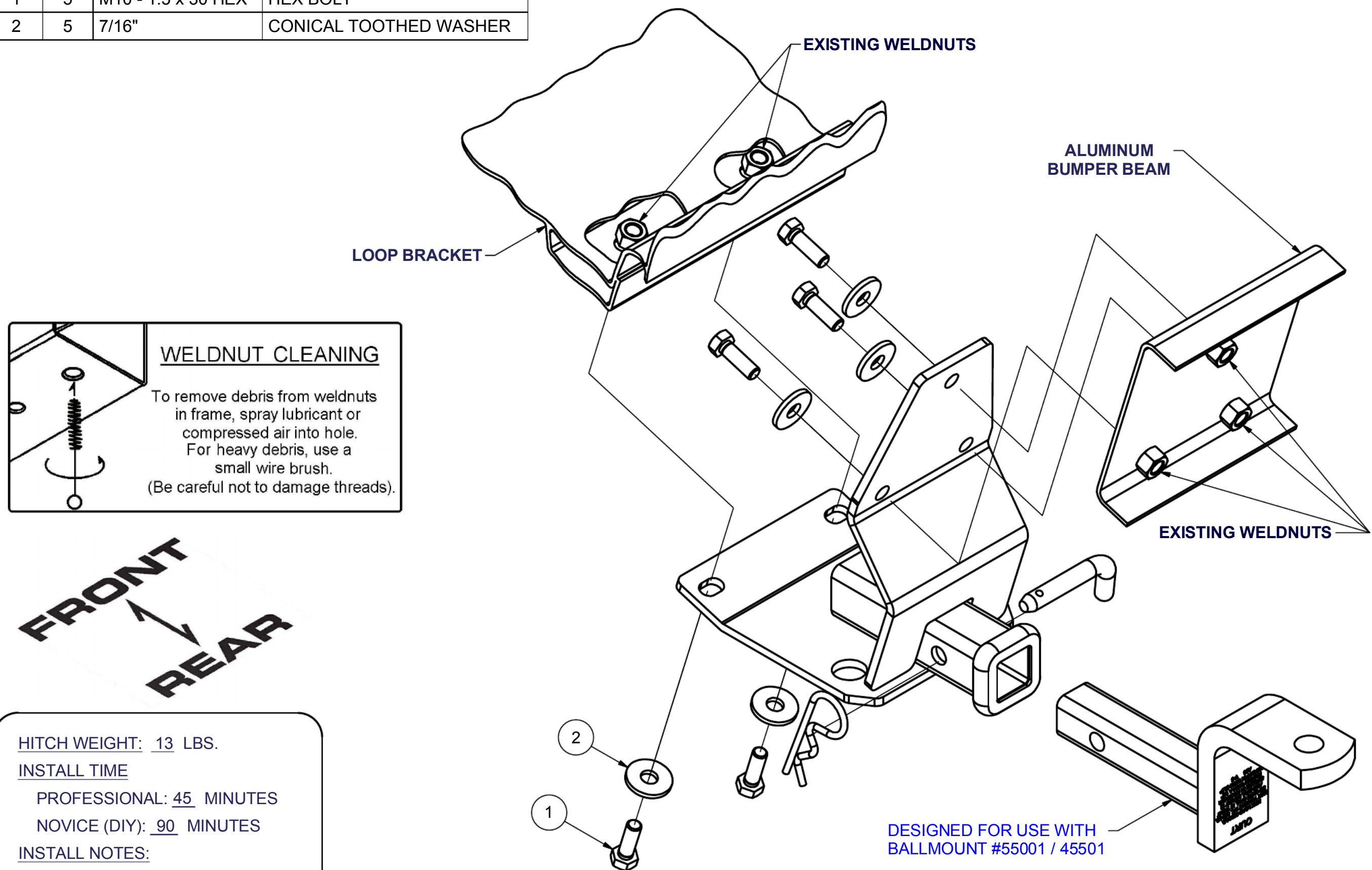
WARNING: ALL NON-TRAILER LOADS APPLIED TO THIS PRODUCT MUST BE SUPPORTED BY 18050 STABILIZING STRAPS.

**** FAILURE TO PROPERLY SUPPORT NON-TRAILER LOADS WILL VOID PRODUCT WARRANTY****

HAVING INSTALLATION QUESTIONS? CALL TECHNICAL SUPPORT AT 1-877-287-8634

Parts List

ITEM	QTY	PART NUMBER	DESCRIPTION
1	5	M10 - 1.5 x 30 HEX	HEX BOLT
2	5	7/16"	CONICAL TOOTHED WASHER



HITCH WEIGHT: 13 LBS.

INSTALL TIME

PROFESSIONAL: 45 MINUTES

NOVICE (DIY): 90 MINUTES

INSTALL NOTES:

- NO DRILLING REQUIRED
- REMOVE REAR BUMPER
- TRIM FASCIA

INSTALLATION STEPS

1. Remove the rear bumper. Fasteners are located inside the trunk at either side against the rear wall. One fastener per side is located under the plastic floor plug. Also remove the small screws joining the bumper fascia (plastic) near the rear wheel wells. Remove the existing tow loop located under the center rear of the vehicle.
2. Remove any existing bolts from the weldnuts in the bumper beam. A "window" must be cut with a knife at the outline existing in the fascia (1988 only). Mount the hitch receiver to the bumper. Torque bolts to bumper beam as there is no access after the bumper is reinstalled.
3. Torque 10mm fasteners to 45 lb-ft.
4. Reinstall the rear bumper but delay final tightening to chassis. Chassis bracket of the hitch should fit to bracket under the center of the vehicle floor with fasteners lining up with existing weldnuts in bracket. Adjust the bumper position to align holes, install fasteners, and tighten. Reinstall rear bumper to vehicle.
5. Torque remaining 10mm fasteners to 45 lb-ft.

PERIODICALLY CHECK THIS RECEIVER HITCH TO ENSURE THAT ALL FASTENERS ARE TIGHT AND THAT ALL STRUCTURAL COMPONENTS ARE SOUND.

Curt Manufacturing Inc., warrants this product to be free of defects in material and/or workmanship at the time of retail purchase by the original purchaser. If the product is found to be defective, Curt Manufacturing Inc., may repair or replace the product, at their option, when the product is returned, prepaid, with proof of purchase. Alteration to, misuse of, or improper installation of this product voids the warranty. Curt Manufacturing Inc.'s liability is limited to repair or replacement of products found to be defective, and specifically excludes liability for incidental or consequential loss or damage.