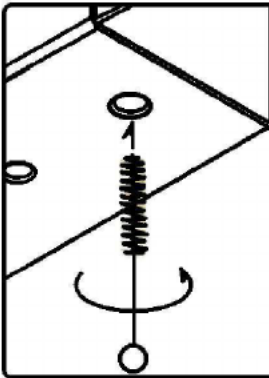


1180886-94 SAAB 900 CONVERTIBLE , 87-93 SEDAN & HATCHBACK (INCL. TURBO)

11/13/2017

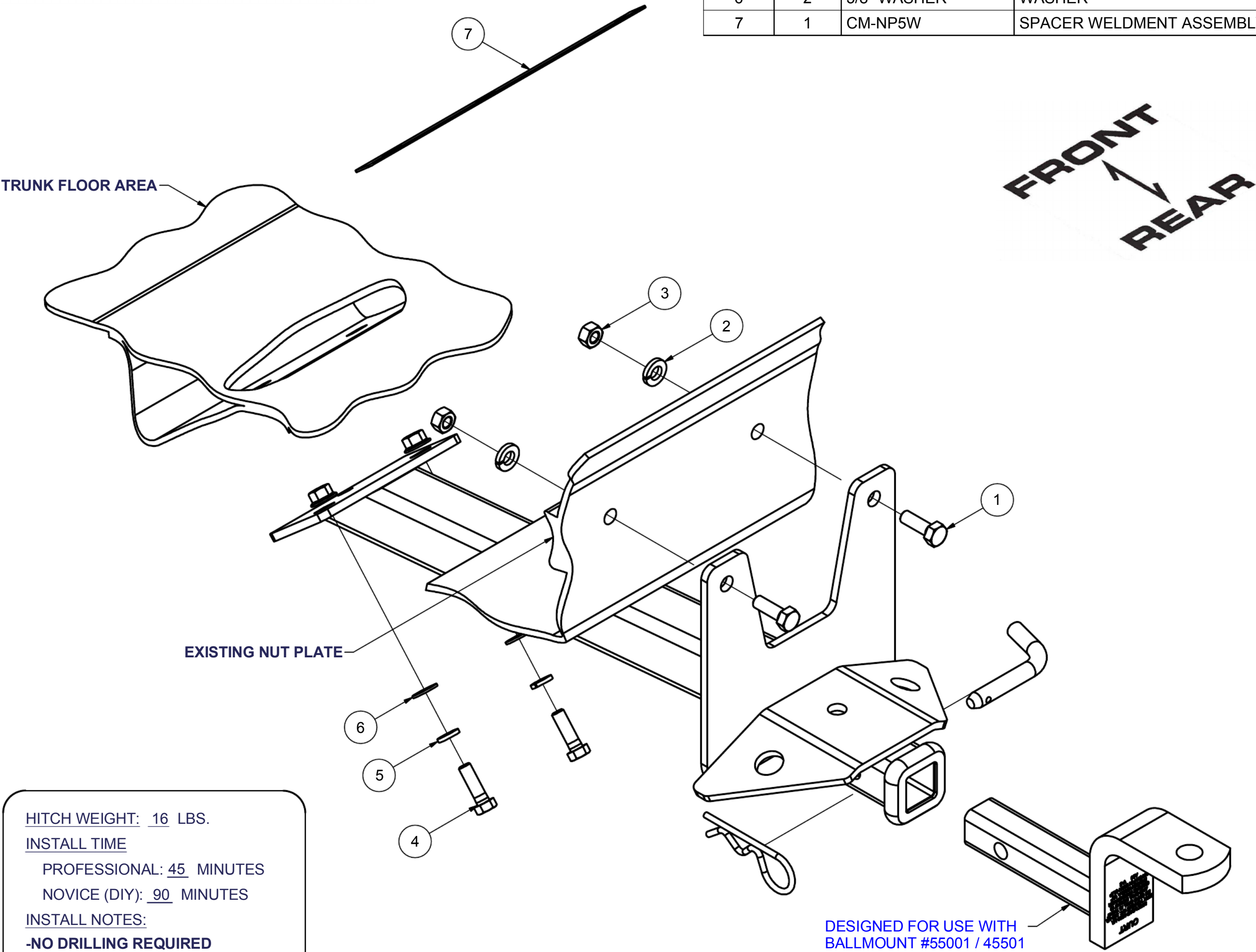
GROSS LOAD CAPACITY WHEN USED AS A WEIGHT CARRYING HITCH: 2,000 LBS. TRAILER WEIGHT & 200 LBS. TONGUE WEIGHT.
DO NOT EXCEED VEHICLE MANUFACTURER'S RECOMMENDED TOWING CAPACITY.
WARNING: ALL NON-TRAILER LOADS APPLIED TO THIS PRODUCT MUST BE SUPPORTED BY AUXILIARY STABILIZING STRAPS.
** FAILURE TO PROPERLY SUPPORT NON-TRAILER LOADS WILL VOID PRODUCT WARRANTY**
HAVING INSTALLATION QUESTIONS? CALL TECHNICAL SUPPORT AT 1-877-287-8634



WELDNUT CLEANING

To remove debris from weldnuts in frame, spray lubricant or compressed air into hole. For heavy debris, use a small wire brush. (Be careful not to damage threads).

Parts List			
ITEM	QTY	PART NUMBER	DESCRIPTION
1	2	M10 - 1.5 x 30 HEX	HEX BOLT
2	2	7/16 LOCK WASHER	HELICAL LOCK WASHER
3	2	M10 - 1.50 HEX-NUT	Hex Nut
4	2	3/8 - 16 x 1 1/4	HEX BOLT
5	2	3/8" LOCK WASHER	LOCK WASHER
6	2	3/8" WASHER	WASHER
7	1	CM-NP5W	SPACER WELDMENT ASSEMBLY



HITCH WEIGHT: 16 LBS.
INSTALL TIME
PROFESSIONAL: 45 MINUTES
NOVICE (DIY): 90 MINUTES
INSTALL NOTES:
-NO DRILLING REQUIRED

INSTALLATION STEPS

1. Remove two existing 10mm screws at either side of the rear bumper bracket at the rear panel. On certain models it will be necessary to remove a bolted on bracket under the floor at the rear center of the car.
2. Using fasteners as shown, mount the hitch to the car at the rear panel. Using fasteners and nut plate provided, mount the hitch at the existng bracket under the floor.
3. Torque all 10mm fasteners to 45 lb-ft, and all 3/8" fasteners to 45 lb-ft.

PERIODICALLY CHECK THIS RECEIVER HITCH TO ENSURE THAT ALL FASTENERS ARE TIGHT AND THAT ALL STRUCTURAL COMPONENTS ARE SOUND.

Curt Manufacturing Inc., warrants this product to be free of defects in material and/or workmanship at the time of retail purchase by the original purchaser. If the product is found to be defective, Curt Manufacturing Inc., may repair or replace the product, at their option, when the product is returned, prepaid, with proof of purchase. Alteration to, misuse of, or improper installation of this product voids the warranty. Curt Manufacturing Inc.'s liability is limited to repair or replacement of products found to be defective, and specifically excludes liability for incidental or consequential loss or damage.