

11742

## 90-02 MERCEDES SL COUPE / ROADSTER

12/5/2012

GROSS LOAD CAPACITY WHEN USED AS A WEIGHT CARRYING HITCH: 2,000 LBS. TRAILER WEIGHT &amp; 200 LBS. TONGUE WEIGHT.

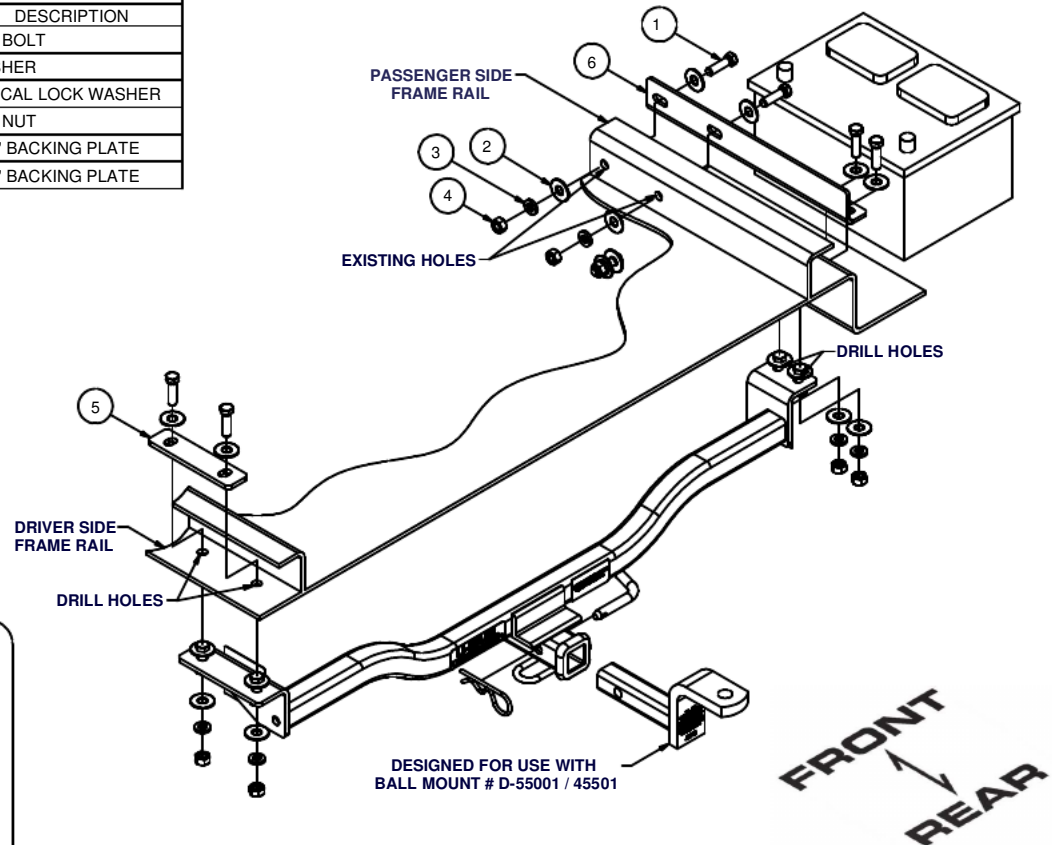
\*\*\*DO NOT EXCEED VEHICLE MANUFACTURER'S RECOMMENDED TOWING CAPACITY.\*\*\*

WARNING: ALL NON-TRAILER LOADS APPLIED TO THIS PRODUCT MUST BE SUPPORTED BY AUXILIARY STABILIZING STRAPS.

\*\* FAILURE TO PROPERLY SUPPORT NON-TRAILER LOADS WILL VOID PRODUCT WARRANTY\*\*

HAVING INSTALLATION QUESTIONS? CALL TECHNICAL SUPPORT AT 1-877-287-8634

Parts List			
ITEM	QTY	PART NUMBER	DESCRIPTION
1	6	7/16-14 x 1 1/2	HEX BOLT
2	12	7/16 WASHER	WASHER
3	6	7/16 LOCK WASHER	HELICAL LOCK WASHER
4	6	7/16-14	HEX NUT
5	1	CM-11742-BP1	.250" BACKING PLATE
6	1	CM-11742-BP	.188" BACKING PLATE



HITCH WEIGHT: 22 LBS.

## INSTALL TIME

PROFESSIONAL: 45 MINUTES

NOVICE (DIY): 90 MINUTES

## INSTALL NOTES:

- DRILLING REQUIRED
- LOOSEN FLOOR PANELS
- MAY REQUIRE BATTERY REMOVE/REINSTALL
- SILICONE SEAL HARDWARE

## INSTALLATION STEPS

1. Clear trunk area and lift panel(s). On certain vehicles it may be necessary to loosen battery mount and shift battery to place CM-11742-BP.
2. Lift hitch into position beneath vehicle into recess locating hitch tight to passenger side of recess. Use hitch as a template to mark bottom side of floor (2) places for hardware.
3. Drill vehicle's floor (2) places for 7/16" diameter fasteners. Mount hitch through floor to CM-11742-BP backing plate using fasteners as shown.
4. Install fasteners joining passenger side backing plate to vehicle's passenger side frame rail.
5. Check hitch to be square with vehicle and use hitch as a template to drill floor on driver side for 7/16" fasteners. Install fasteners into driver side frame rail through CM-11742-BP1 backing plate.
6. Torque all 7/16" fasteners to 70 ft-lbs.
7. Use silicone sealant to seal hardware installed through trunk floor.
8. Resecure battery into place, reinstall floor panels, and replace trunk contents.

**PERIODICALLY CHECK THIS RECEIVER HITCH TO ENSURE THAT ALL FASTENERS ARE TIGHT AND THAT ALL STRUCTURAL COMPONENTS ARE SOUND.**

Curt Manufacturing Inc., warrants this product to be free of defects in material and/or workmanship at the time of retail purchase by the original purchaser. If the product is found to be defective, Curt Manufacturing Inc., may repair or replace the product, at their option, when the product is returned, prepaid, with proof of purchase. Alteration to, misuse of, or improper installation of this product voids the warranty. Curt Manufacturing Inc.'s liability is limited to repair or replacement of products found to be defective, and specifically excludes liability for incidental or consequential loss or damage.