

INSTALLATION MANUAL

11670

Level of Difficulty

Moderate

Installation difficulty levels are based on time and effort involved and may vary depending on the installer level of expertise, condition of the vehicle and proper tools and equipment.

Weight Carrying Capacity

Gross trailer weight (GTW)	2,000 lbs.
Tongue weight (TW)	200 lbs.

Parts List

Item	Qty	Description
1	1	Trailer hitch
2	4	Carriage bolt, 7/16" - 14 x 1.5"
3	4	Spacer, 2.25" x 0.88" x 0.25"
4	4	Serrated-flange nut, 7/16" - 14

Tools Required

Ratchet	Drill
Socket, 10mm	Drill bit, 1/2"
Socket, 11/16"	Marker
Fishwire, 7/16" (includes 4 qty)	Flathead screwdriver Tin snips

* For a tools reference guide visit curtmfg.com/trailer-hitch-installation

Product Registration and Warranty

CURT stands behind our products with industry-leading warranties. To get copies of the product warranties, register your purchase or provide feedback, visit: warranty.curtgroup.com/surveys

⚠ WARNING

Never exceed the vehicle manufacturer's recommended towing capacity.

Product Photo



NOTICE

Visit www.curtmfg.com for a full-color copy of this instruction manual, as well as helpful videos, guides and much more!

Before you begin installation, read all instructions thoroughly.

Proper tools will improve the quality of installation and reduce the time required.

This installation requires:

- Lowering of the exhaust
- Trimming of the underbody panel and heat shield
- Fishwiring to install hardware
- Drilling and hole enlargement

Periodic inspection of the trailer hitch should be performed to ensure all mounting hardware remains tight and structural components are secure.

To help prevent damage to the product or vehicle, refer to the specified torque specifications when securing hardware during the installation process.

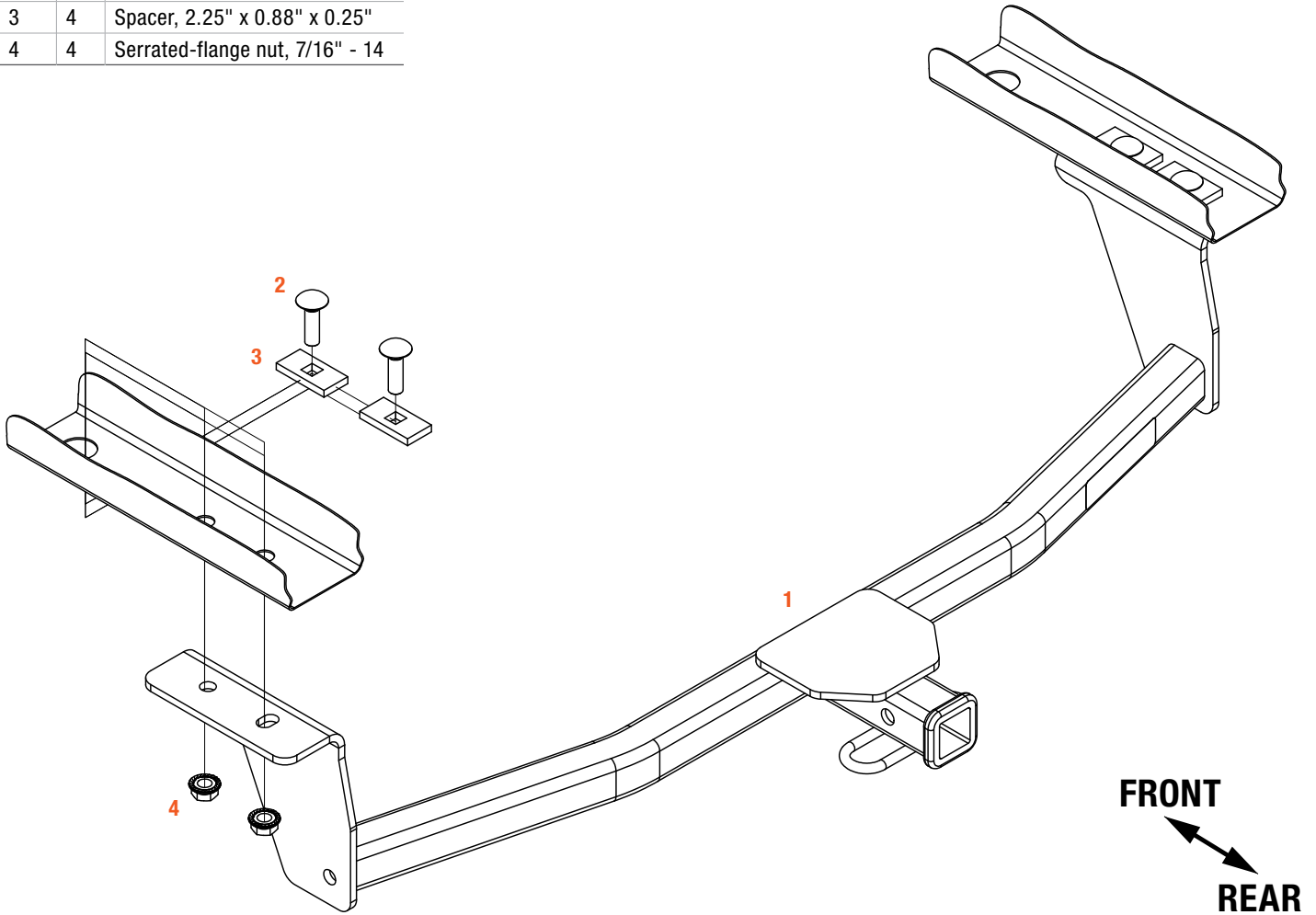
SAFETY INSTRUCTIONS

Safety glasses should be worn at all times while installing this product.

ASSEMBLY

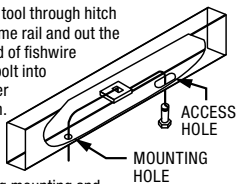
Parts List

Item	Qty	Description
1	1	Trailer hitch
2	4	Carriage bolt, 7/16" - 14 x 1.5"
3	4	Spacer, 2.25" x 0.88" x 0.25"
4	4	Serrated-flange nut, 7/16" - 14



FISHWIRE TECHNIQUE

Insert coiled end of fishwire tool through hitch mounting hole in vehicle frame rail and out the access hole. Pass coiled end of fishwire through spacer and thread bolt into coil. Kink wire to keep spacer separate from bolt as shown. Pull fishwire, spacer and bolt through frame and out mounting hole. Use fishwire to guide hitch during mounting and prevent loss of bolt or spacer inside frame rail.

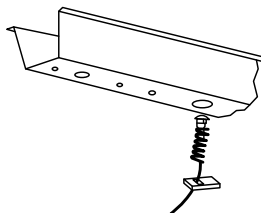


REVERSE PULL FISHWIRE TECHNIQUE

Attach the fishwire to the carriage bolt and slide the spacer onto the fishwire.

Push the bolt through the hole followed by the spacer, as shown.

Pull the bolt back into position, protruding from the frame.



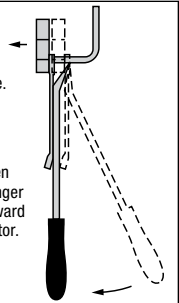
RUBBER ISOLATOR REMOVAL DIAGRAM

This technique can be used if exhaust hanger removal pliers are not available.

Using a 5/8" open end wrench, slide the wrench up to the rubber isolator, cradling the hanger rod as shown.

Place the flat edge of a pry bar between the wrench and the hanger stop or hanger rod. Then simply rotate the pry bar toward the wrench to remove the rubber isolator.

Note: Using a lubricant or soapy water on the hanger rod and the rubber isolator helps removal.



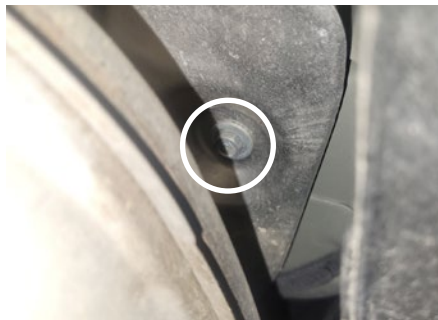
Step 1

Carefully remove the exhaust from the two rubber isolators. Place supports under the exhaust to prevent damage to the vehicle.



Step 2

Remove the four bolts from each heat shield on either side of the exhaust with a 10 mm socket. Remove the heat shields and set aside with their eight bolts for reinstallation in step 8.



Step 3

Raise the hitch into position and align it with the rear attachment holes on both sides of the vehicle frame rails. Use a marker to mark the center of the forward attachment holes of the hitch brackets. Make sure the hitch sits straight while marking the holes.

Step 4

Use a drill and 1/2" bit to drill the forward attachment holes on the marks made in step 3. Enlarge the existing rear attachment holes to 1/2" on both sides as well.



Step 5

Fishwire two 7/16" bolts (#2) through the spacer (#3) into the existing access hole in the frame rail on each side of the vehicle.



Step 6

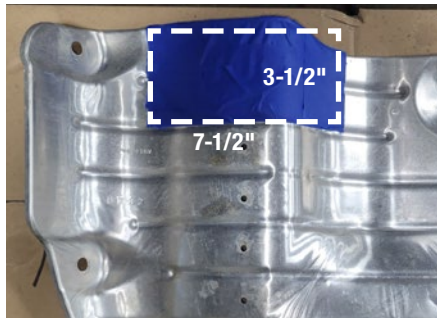
Raise the hitch into position over the bolts. Carefully remove the fishwires and secure the hitch with the 7/16" serrated flange nuts (#4).

Torque the 7/16" hardware to 59 ft-lbs.



Step 7

Using a tape measure, marker and tin snips, measure, mark and trim the area on the heat shields as shown.



Step 8

Reinstall the heat shield removed in step 2 and replace the exhaust onto the rubber isolaters removed in step 1.

TOWING BASICS & SAFETY INFORMATION

For information on safely towing your trailer, visit curtmfg.com/understanding-towing.