

11661**85-93 VOLKSWAGEN RABBIT CABRIOLET**

12/7/2012

GROSS LOAD CAPACITY WHEN USED AS A WEIGHT CARRYING HITCH: 1,500 LBS. TRAILER WEIGHT & 150 LBS. TONGUE WEIGHT.

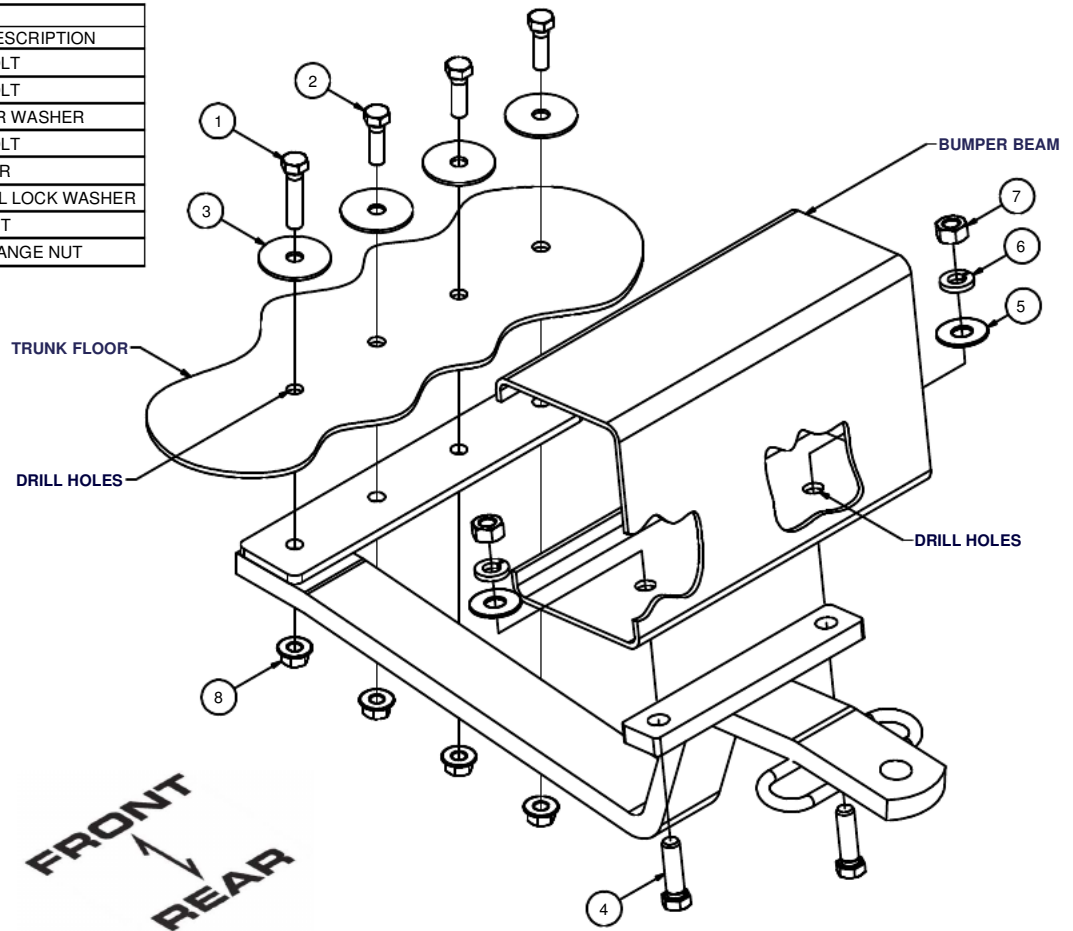
*****DO NOT EXCEED VEHICLE MANUFACTURER'S RECOMMENDED TOWING CAPACITY.*****

WARNING: ALL NON-TRAILER LOADS APPLIED TO THIS PRODUCT MUST BE SUPPORTED BY 18050 STABILIZING STRAPS.

**** FAILURE TO PROPERLY SUPPORT NON-TRAILER LOADS WILL VOID PRODUCT WARRANTY****

HAVING INSTALLATION QUESTIONS? CALL TECHNICAL SUPPORT AT 1-877-287-8634

Parts List			
ITEM	QTY	PART NUMBER	DESCRIPTION
1	1	3/8 - 16 x 1 3/4	HEX BOLT
2	3	3/8 - 16 x 1 1/4	HEX BOLT
3	4	3/8"	FENDER WASHER
4	2	7/16-14 x 1 1/2	HEX BOLT
5	2	7/16	WASHER
6	2	7/16 LOCK WASHER	HELICAL LOCK WASHER
7	2	7/16-14	HEX NUT
8	4	HFN3816	HEX FLANGE NUT



HITCH WEIGHT: 12 LBS.

INSTALL TIME

PROFESSIONAL: 30 MINUTES

NOVICE (DIY): 60 MINUTES

INSTALL NOTES:

- REMOVE SPARE / TRUNK CONTENTS
- MAY REQUIRE FASCIA TRIMMING
- DRILLING REQUIRED
- SILICONE FASTENERS

INSTALLATION STEPS

1. Remove the spare tire and trunk contents from the vehicle.
2. Position the hitch against the vehicle's tire well and bumper as shown. On 1988 and later models, mark plastic bumper fascia for hitch bumper bracket and trim fascia using utility knife. Bumper bracket must fit directly onto metal part of rear bumper. Make certain that the hitch is centered and square with the vehicle. Check for enough clearance between hitch ball and bumper.
3. Using the hitch as a template, mark and drill (4) places in trunk floor for 3/8" hardware and (2) places in the metal bumper for 7/16" hardware.
4. Fasten the hitch to vehicle using fasteners as shown. Be certain to place fender washers opposite the hitch, inside the spare tire well.
5. Torque all 3/8" fasteners to 45 lb-ft, and all 7/16" fasteners to 70 lb-ft.
6. Apply silicone sealant around fasteners installed in trunk to seal out water and exhaust fumes.
7. Reinstall spare tire and trunk contents removed in step 1.

PERIODICALLY CHECK THIS RECEIVER HITCH TO ENSURE THAT ALL FASTENERS ARE TIGHT AND THAT ALL STRUCTURAL COMPONENTS ARE SOUND.

Curt Manufacturing Inc., warrants this product to be free of defects in material and/or workmanship at the time of retail purchase by the original purchaser. If the product is found to be defective, Curt Manufacturing Inc., may repair or replace the product, at their option, when the product is returned, prepaid, with proof of purchase. Alteration to, misuse of, or improper installation of this product voids the warranty. Curt Manufacturing Inc.'s liability is limited to repair or replacement of products found to be defective, and specifically excludes liability for incidental or consequential loss or damage.