

11557**79-83 DATSUN 280ZX**

12/14/2012

GROSS LOAD CAPACITY WHEN USED AS A WEIGHT CARRYING HITCH: 1,500 LBS. TRAILER WEIGHT & 150 LBS. TONGUE WEIGHT.

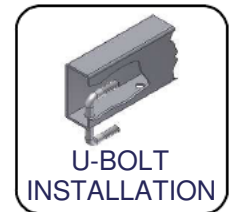
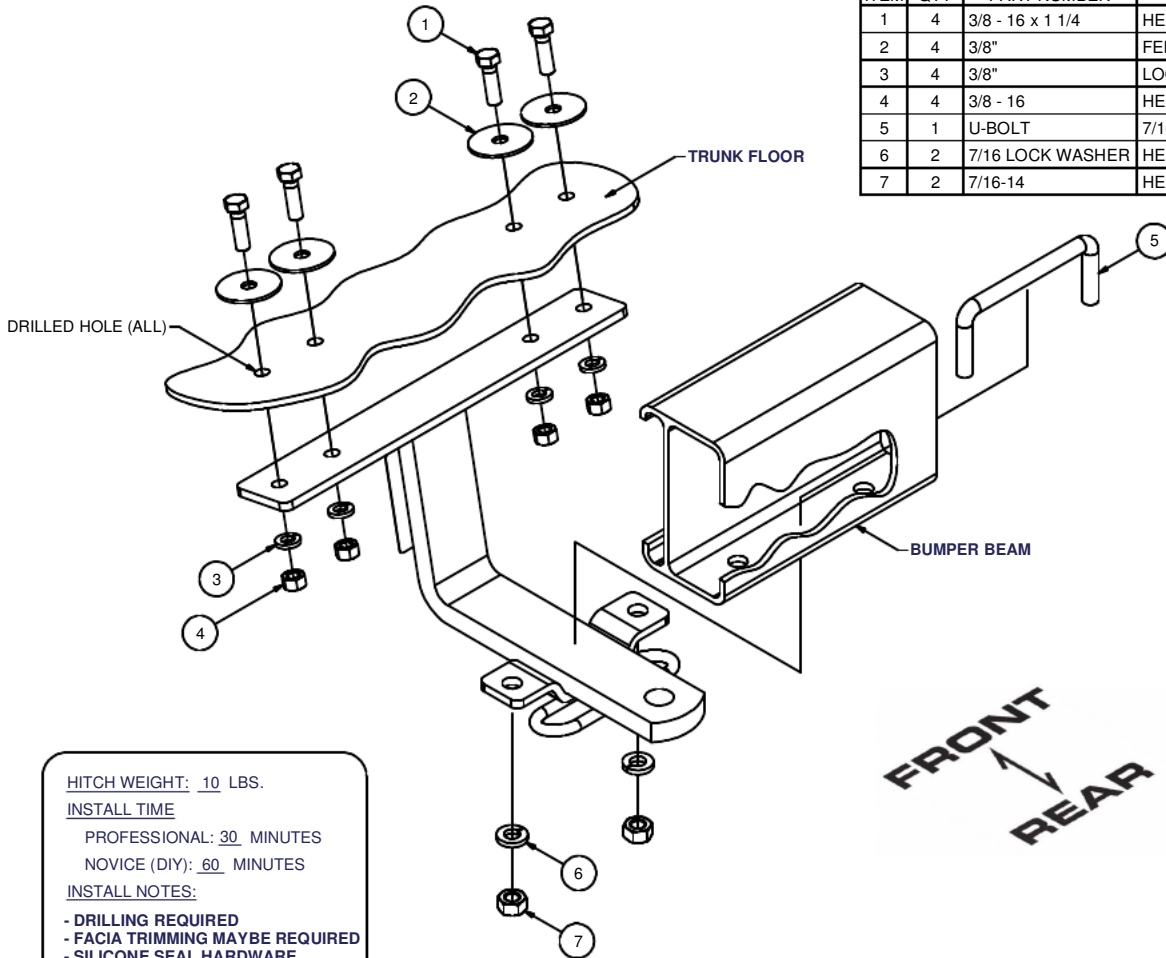
*****DO NOT EXCEED VEHICLE MANUFACTURER'S RECOMMENDED TOWING CAPACITY.*****

WARNING: ALL NON-TRAILER LOADS APPLIED TO THIS PRODUCT MUST BE SUPPORTED BY 18050 STABILIZING STRAPS.

**** FAILURE TO PROPERLY SUPPORT NON-TRAILER LOADS WILL VOID PRODUCT WARRANTY****

HAVING INSTALLATION QUESTIONS? CALL TECHNICAL SUPPORT AT 1-877-287-8634

Parts List			
ITEM	QTY	PART NUMBER	DESCRIPTION
1	4	3/8 - 16 x 1 1/4	HEX BOLT
2	4	3/8"	FENDER WASHER
3	4	3/8"	LOCK WASHER
4	4	3/8 - 16	HEX NUT
5	1	U-BOLT	7/16-14 x 4.75 x 2.25 SQ. U-BOLT
6	2	7/16 LOCK WASHER	HELICAL LOCK WASHER
7	2	7/16-14	HEX NUT



HITCH WEIGHT: 10 LBS.

INSTALL TIME

PROFESSIONAL: 30 MINUTES

NOVICE (DIY): 60 MINUTES

INSTALL NOTES:

- DRILLING REQUIRED
- FACIA TRIMMING MAYBE REQUIRED
- SILICONE SEAL HARDWARE

INSTALLATION STEPS

1. Remove the interior panel and contents at the vary rear of the vehicle that gives access to the tail light assemblies.
2. Hold the hitch in place against the underside of the floor and the rear bumper as shown, centered and square with the vehicle. Remove any material from the bumper that prevents the hitch tongue from fitting flush with the metal bumper. Using the hitch as a template, mark and drill the underside of the trunk floor (4) places, for 3/8" fasteners and the bumper beam (2) places 7/16" fasteners.
3. Carefully place hitch onto u-bolt and fasten loosely with lock washers and nuts. Fasten the bolts for the trunk floor using fender washers inside the trunk.
4. Torque all 3/8" fasteners to 45 lb-ft, and all 7/16" fasteners to 70 lb-ft.
5. Use silicone sealant to seal hardware installed through trunk floor.
6. Reinstall trunk contents.

PERIODICALLY CHECK THIS RECEIVER HITCH TO ENSURE THAT ALL FASTENERS ARE TIGHT AND THAT ALL STRUCTURAL COMPONENTS ARE SOUND.

Curt Manufacturing Inc., warrants this product to be free of defects in material and/or workmanship at the time of retail purchase by the original purchaser. If the product is found to be defective, Curt Manufacturing Inc., may repair or replace the product, at their option, when the product is returned, prepaid, with proof of purchase. Alteration to, misuse of, or improper installation of this product voids the warranty. Curt Manufacturing Inc.'s liability is limited to repair or replacement of products found to be defective, and specifically excludes liability for incidental or consequential loss or damage.