



# 11524 INSTALLATION INSTRUCTIONS

Safety glasses should be worn at all times while installing this product.

YEARS: 2016-PRESENT

MAKE: MINI COOPER

MODEL: CLUBMAN

STYLE: WAGON

**WARNING: NEVER EXCEED YOUR VEHICLE MANUFACTURER'S RECOMMENDED TOWING CAPACITY**  
For more information log onto [www.curtmfg.com](http://www.curtmfg.com) & for helpful towing tips log onto [www.hitchinfo.com](http://www.hitchinfo.com)

**WEIGHT CARRYING:**  
TRAILER WEIGHT: 2,000 LBS.  
TONGUE WEIGHT: 200 LBS.

**WARNING:**  
WE RECOMMEND THE USE OF 18050 STABILIZING STRAPS FOR ALL NON-TRAILER (WHEEL-LESS) LOADS. PLEASE SEE THE CURT CATALOG OR VISIT US ONLINE AT [WWW.CURTMFG.COM](http://WWW.CURTMFG.COM) FOR FURTHER INFORMATION.

**PRO INSTALL TIME: 90 MIN.**  
**NOVICE INSTALL TIME: 180 MIN.**

IF YOU ARE HESITANT TO UNDERTAKE THIS TASK ON YOUR OWN, CONTACT AN AUTHORIZED CURT INSTALLER FOR ADDITIONAL ASSISTANCE.

- INSTALLATION TIPS:**
1. BEFORE YOU BEGIN INSTALLATION, READ ALL INSTRUCTIONS THOROUGHLY.
  2. TO EASE INSTALLATION, 2 PEOPLE MAY BE REQUIRED.
  3. USING PROPER TOOLS WILL GREATLY IMPROVE THE QUALITY OF THE INSTALL AND REDUCE THE TIME REQUIRED.
  4. NEED HELP OR HAVE SOME QUESTIONS? CALL TECHNICAL SUPPORT AT 877.287.8634



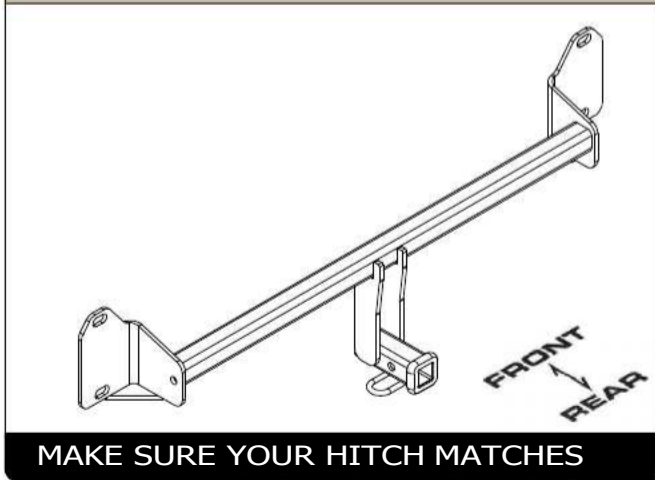
**INSTALLATION REQUIRES:**

 RATCHET	 TORQUE WRENCH	 8" SOCKET EXTENSION
 8mm 10mm 18mm SOCKETS	 PRY BAR	 T-25 TORXBIT SOCKET
 AVIATION SHEARS	 SAFETY GLASSES	

**LEVEL OF DIFFICULTY: CHALLENGING**

EASY	MODERATE	CHALLENGING
	NO DRILLING REQUIRED	
	TEMPORARILY REMOVE BUMPER AND REAR FASCIA	
	HEATSHIELD TRIM REQUIRED	

**HITCH ILLUSTRATION:**



SCAN FOR MORE INFO

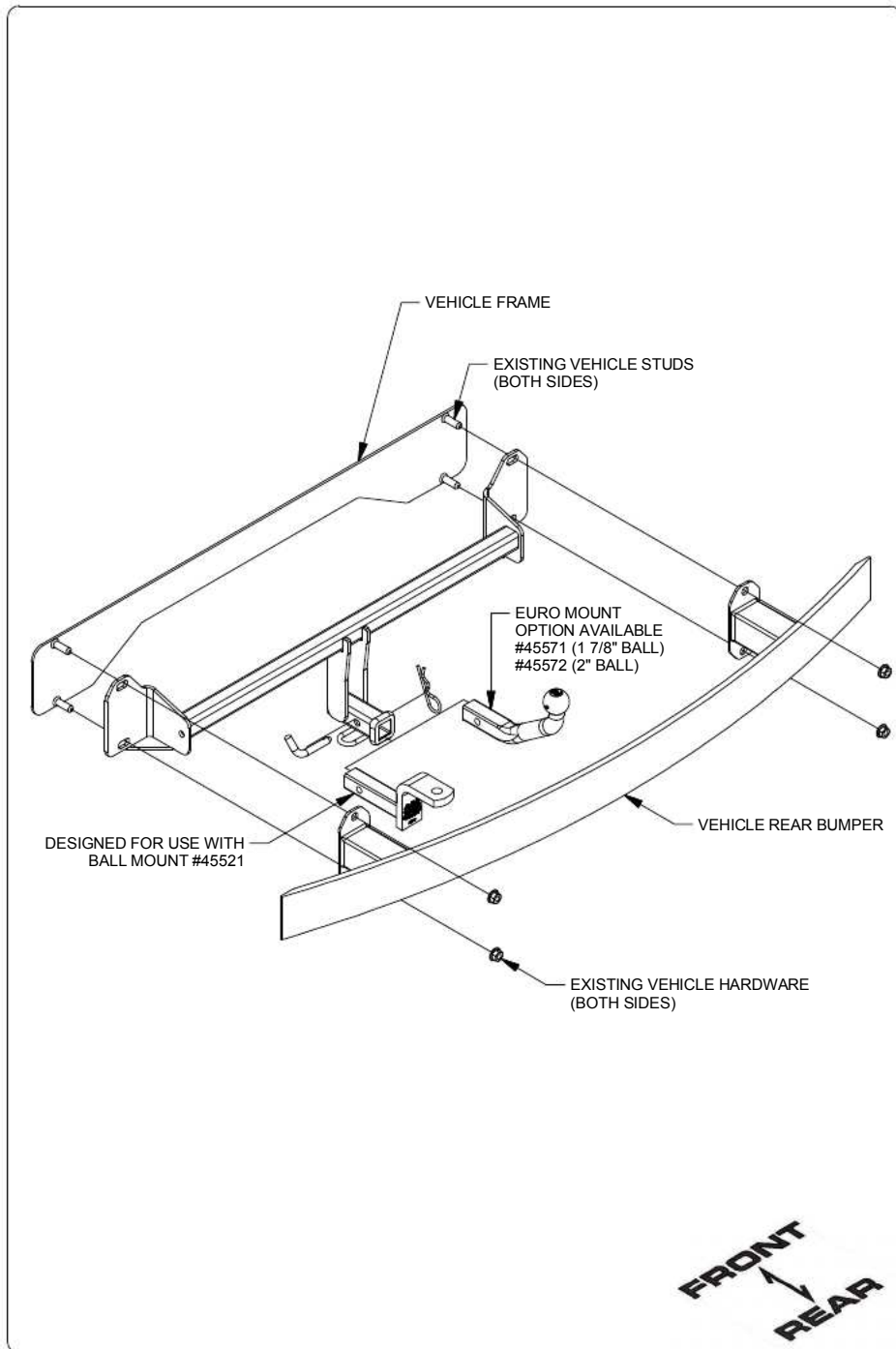
**PERIODICALLY CHECK THIS RECEIVER HITCH TO ENSURE ALL FASTENERS ARE TIGHT AND ALL STRUCTURAL COMPONENTS ARE SOUND**

CURT Manufacturing LLC. warrants this product to be free of defects in material and/or workmanship at the time of retail purchase by the original purchaser. If the product is found to be defective, CURT Manufacturing LLC. may repair or replace the product at their option, when the product is returned, prepaid, with proof of purchase. Alteration to, misuse of, or improper installation of this product voids the warranty. CURT Manufacturing LLC.'s liability is limited to repair or replacement of products found to be defective, and specifically excludes liability for incidental or consequential loss or damage.

For more information log onto [www.curtmfg.com](http://www.curtmfg.com), & for helpful towing tips log onto [www.hitchinfo.com](http://www.hitchinfo.com)

This product complies with safety specifications and requirements for connecting devices and towing systems of the state of New York, V.E.S.C.Regulation V-5 and SAE J684.

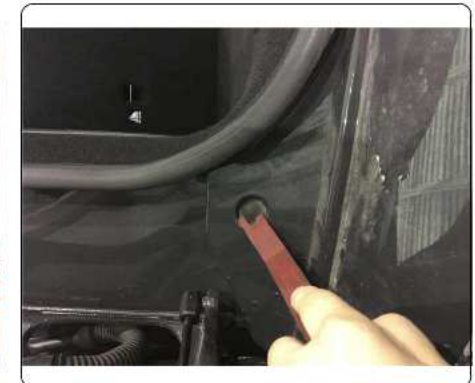
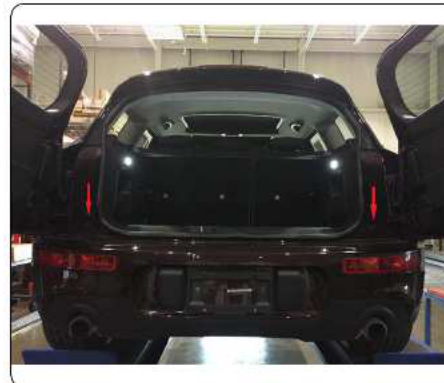
## INSTALLATION WALKTHROUGH:



1. Locate in wheel well and remove (1) screw on each side, and (8) screws on bottom of rear fascia using a 8mm socket.

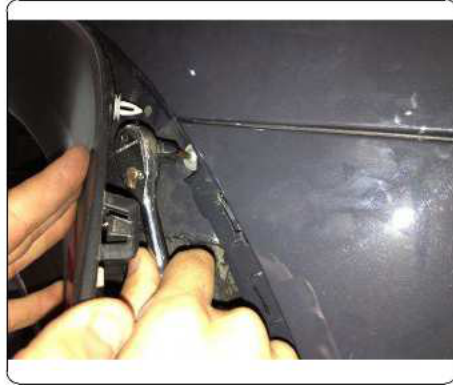


2. Open rear hatch doors to locate and remove (2) push pins using a pry tool.

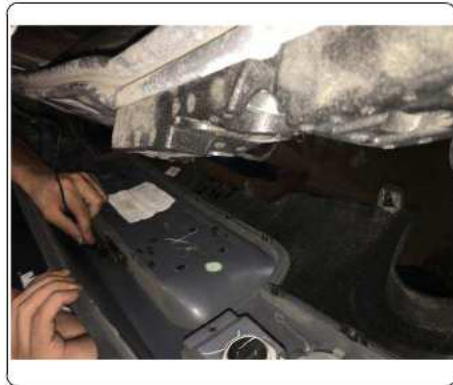


## INSTALLATION WALKTHROUGH:

3. Unclip plastic wheel well trim to expose and unclip electrical harness. Locate and remove (1) screw on each side using T-25 socket.



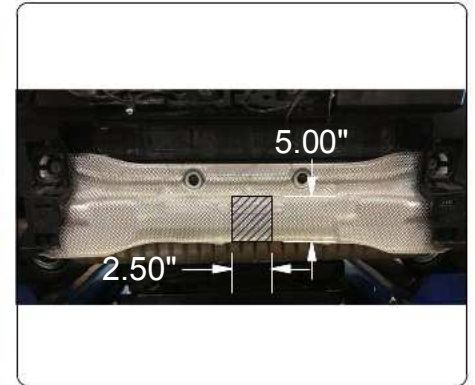
4. Carefully unclip rear fascia, starting from outside working towards the center of the vehicle. Unclip electrical harness from bumper cover if present.



5. Remove rear bumper beam from vehicle by removing (2) nuts on each side using 18mm socket.  
**NOTE:** If hands free split rear doors present remove (2) fasteners and unclip from vehicle.



6. Trim heatshield using aviation shears. Use trim diagram as a reference.  
**NOTE:** All dimensions are approximate, confirm fit prior to trimming.



## INSTALLATION WALKTHROUGH:

7. Raise hitch into position using studs to align, reinstall rear bumper beam over hitch and secure using existing vehicle hardware.



8. Torque all M12 hardware to 86 ft-lbs.
9. Reinstall vehicle components removed using steps 1-6 in reverse order.



## TOWING SAFETY INFORMATION

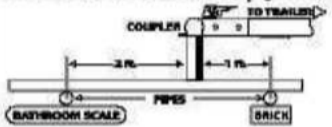
### Gross Trailer Weight / GTW

The Gross Trailer Weight is the weight of the trailer & cargo. Measure this by putting the fully loaded trailer on a vehicle scale.



### Tongue Weight / TW

The downward force that is exerted on the hitch ball by the coupler. The tongue weight will vary depending on where the load is positioned in relationship to the trailer axle(s). To measure the tongue weight, use either a commercial scale or a bathroom scale with the coupler at towing height. When using a bathroom scale with heavier tongue weights, use the method shown and multiply the scale reading by 3.

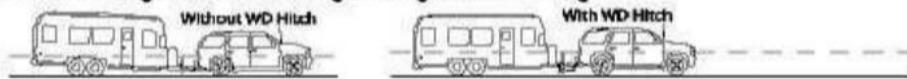


### Weight Carrying / WC

The total weight of both the trailer and the cargo inside. Never exceed the weight capacity of your trailer hitch.

### Weight Distribution / WD

Used to balance the weight of the cargo between the front and rear wheels throughout the trailer, allowing for better steering, braking, and level riding.



### Sway Control

A device used to reduce the lateral movements of the trailer that are caused by the wind. This works in conjunction with a weight distribution hitch. Do not use this on a class 1 or 2 hitch, or with surge brakes.

### How Much Can You Safely Tow?

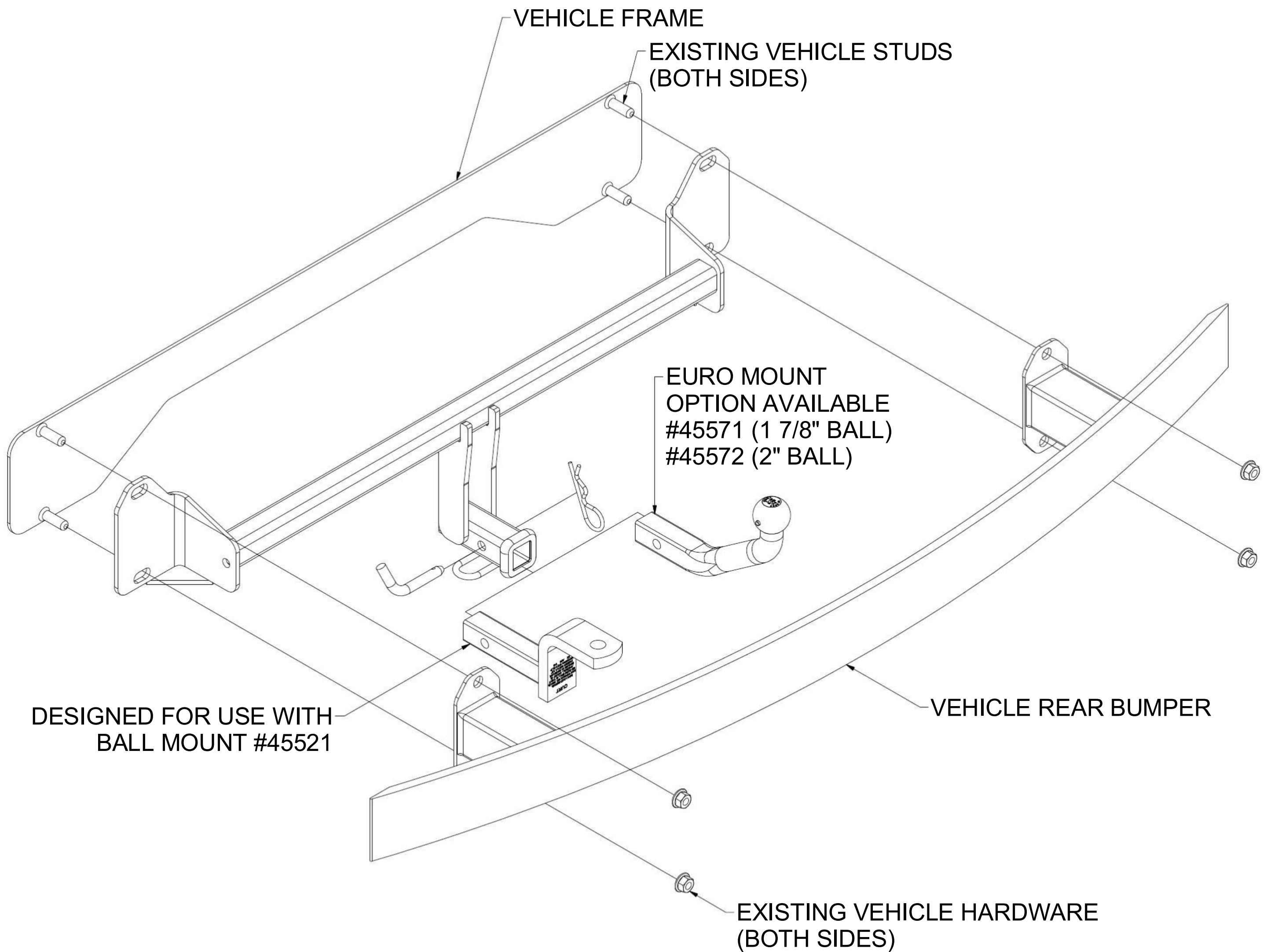
TONGUE WEIGHT (lb.)	TRAILER TYPE									
	CLASS 1	CLASS 2	CLASS 3	CLASS 4	CLASS 5	CLASS 6	CLASS 7	CLASS 8	CLASS 9	CLASS 10
100										
150										
200										
250										
300										
350										
400										
450										
500										
550										
600										
650										
700										
750										
800										
850										
900										
950										
1000										
1050										
1100										
1150										
1200										
1250										
1300										
1350										
1400										
1450										
1500										
1550										
1600										
1650										
1700										
1750										
1800										
1850										
1900										
1950										
2000										
2050										
2100										
2150										
2200										
2250										
2300										
2350										
2400										
2450										
2500										
2550										
2600										
2650										
2700										
2750										
2800										
2850										
2900										
2950										
3000										
3050										
3100										
3150										
3200										
3250										
3300										
3350										
3400										
3450										
3500										
3550										
3600										
3650										
3700										
3750										
3800										
3850										
3900										
3950										
4000										
4050										
4100										
4150										
4200										
4250										
4300										
4350										
4400										
4450										
4500										
4550										
4600										
4650										
4700										
4750										
4800										
4850										
4900										
4950										
5000										
5050										
5100										
5150										
5200										
5250										
5300										
5350										
5400										
5450										
5500										
5550										
5600										
5650										
5700										
5750										
5800										
5850										
5900										
5950										
6000										
6050										
6100										
6150										
6200										
6250										
6300										
6350										
6400										
6450										
6500										
6550										
6600										
6650										
6700										
6750										
6800										
6850										
6900										
6950										
7000										
7050										
7100										
7150										
7200										
7250										
7300										
7350										
7400										
7450										
7500										
7550										
7600										
7650										
7700										
7750										
7800										
7850										
7900										
7950										
8000										
8050										
8100										
8150										
8200										
8250										
8300										
8350										
8400										
8450										
8500										
8550										
8600										
8650										
8700										
8750										
8800										
8850										
8900										
8950										
9000										
9050										
9100										
9150										
9200										
9250										
9300										
9350										
9400										
9450										
9500										
9550										
9600										
9650										
9700										
9750										
9800										

GROSS LOAD CAPACITY WHEN USED AS A WEIGHT CARRYING HITCH: 2,000 LBS. TRAILER WEIGHT & 200 LBS. TONGUE WEIGHT.



**WARNING: \*\*\* DO NOT EXCEED VEHICLE MANUFACTURER'S RECOMMENDED TOWING CAPACITY. \*\*\***

FOR MORE INFORMATION LOG ONTO [WWW.CURTMFG.COM](http://WWW.CURTMFG.COM) & FOR HELPFUL TOWING TIPS LOG ONTO [WWW.HITCHINFO.COM](http://WWW.HITCHINFO.COM)  
HAVING INSTALLATION QUESTIONS? CALL TECHNICAL SUPPORT AT 1-877-287-8634



DESIGNED FOR USE WITH BALL MOUNT #45521

VEHICLE REAR BUMPER

EXISTING VEHICLE HARDWARE (BOTH SIDES)



HITCH WEIGHT: 24 LBS.

INSTALL TIME

PROFESSIONAL: 180 MINUTES

NOVICE (DIY): 90 MINUTES

INSTALL NOTES:

- NO DRILLING REQUIRED
- TEMPORARILY REMOVE BUMPER AND REAR FASCIA
- HEATSHIELD TRIM REQUIRED

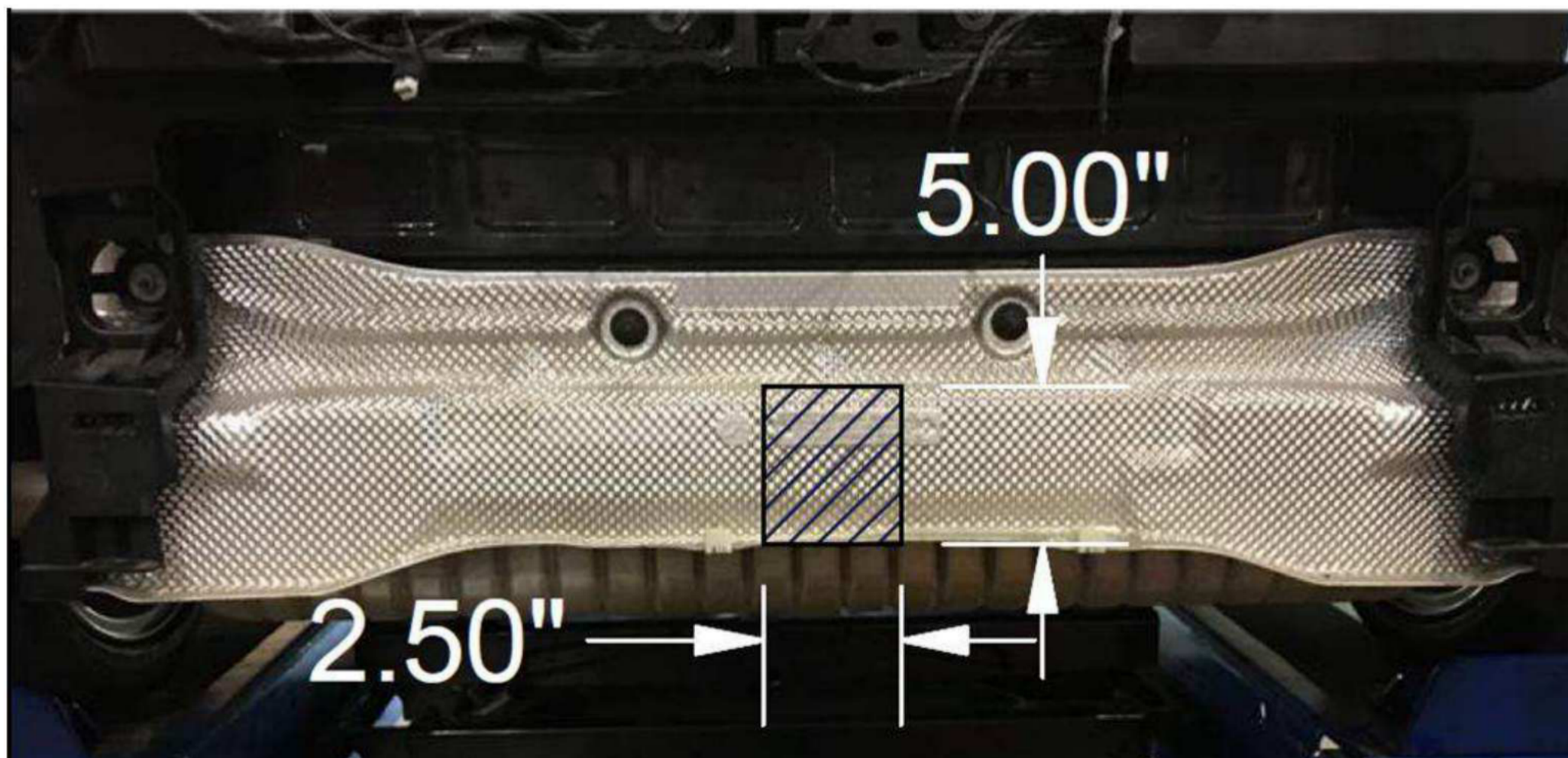
**PERIODICALLY CHECK THIS RECEIVER HITCH TO ENSURE THAT ALL FASTENERS ARE TIGHT AND THAT ALL STRUCTURAL COMPONENTS ARE SOUND.**



Scan for more information

CURT Manufacturing LLC., warrants this product to be free of defects in material and/or workmanship at the time of retail purchase by the original purchaser. If the product is found to be defective, CURT Manufacturing LLC., may repair or replace the product, at their option, when the product is returned, prepaid, with proof of purchase. Alteration to, misuse of, or improper installation of this product voids the warranty. CURT Manufacturing LLC.'s liability is limited to repair or replacement of products found to be defective, and specifically excludes liability for incidental or consequential loss or damage.

This product complies with safety specifications and requirements for connecting devices and towing systems of the state of New York, V.E.S.C.Regulation V-5 and SAE J684.

**TRIM DIAGRAM****INSTALLATION STEPS**

1. Locate in wheel well and remove (1) screw on each side, and (8) screws on bottom of rear fascia using a 8mm socket.
2. Open rear hatch doors to locate and remove (2) push pins using a pry tool.
3. Unclip plastic wheel well trim to expose and unclip electrical harness. Locate and remove (1) screw on each side using T25 socket.
4. Carefully unclip rear fascia, starting from outside working towards the center of the vehicle. Unclip electrical harness from bumper cover if present.
5. Remove rear bumper beam from vehicle by removing (2) nuts on each side using 18mm socket.  
**NOTE:** If hands free split rear doors are present remove (2) fasteners and unclip from vehicle.
6. Trim heatshield using aviation shears. Use trim diagram as a reference.  
**NOTE:** All dimensions are approximate, confirm fit prior to trimming.
7. Raise hitch into position using studs to align, reinstall rear bumper beam over hitch and secure using existing vehicle hardware.
8. Torque all M12 hardware to 86 ft-lbs.
9. Reinstall vehicle components removed using steps 1-6 in reverse order.

**PERIODICALLY CHECK THIS RECEIVER HITCH TO ENSURE THAT ALL FASTENERS ARE TIGHT AND THAT ALL STRUCTURAL COMPONENTS ARE SOUND.**