



Safety glasses should be worn at all times while installing this product.

YEARS: 2013-PRESENT

MAKE: CHEVROLET

MODEL: SPARK

(INCLUDING MODELS WITH GROUND EFFECTS)

STYLE: HATCHBACK

WARNING: NEVER EXCEED YOUR VEHICLE MANUFACTURER'S RECOMMENDED TOWING CAPACITY
 For more information log onto www.curtmfg.com & for helpful towing tips log onto www.hitchinfo.com

WEIGHT CARRYING:
 TRAILER WEIGHT: 2,000 LBS.
 TONGUE WEIGHT: 200 LBS.

WARNING:
 ALL NON-TRAILER (WHEEL-LESS) LOADS APPLIED TO THIS PRODUCT MUST BE SUPPORTED BY 18050 STABILIZING STRAPS. PLEASE SEE THE CURT CATALOG OR VISIT US ONLINE AT WWW.CURTMFG.COM FOR FURTHER INFORMATION.

PRO INSTALL TIME: 20 MIN.
NOVICE INSTALL TIME: 40 MIN.

IF YOU ARE HESITANT TO UNDERTAKE THIS TASK ON YOUR OWN, CONTACT AN AUTHORIZED CURT INSTALLER FOR ADDITIONAL ASSISTANCE.

INSTALLATION REQUIRES:

DIE GRINDER	PRY BAR	RATCHET
SAFETY GLASSES	SPRAY LUBRICANT	SOCKET 11/16 3/4
TORQUE WRENCH		

INSTALLATION TIPS:

- BEFORE YOU BEGIN INSTALLATION, READ ALL INSTRUCTIONS THOROUGHLY.
- TO EASE INSTALLATION, 2 PEOPLE MAY BE REQUIRED.
- USING PROPER TOOLS WILL GREATLY IMPROVE THE QUALITY OF THE INSTALL AND REDUCE THE TIME REQUIRED.
- NEED HELP OR HAVE SOME QUESTIONS? CALL TECHNICAL SUPPORT AT 877.287.8634

LEVEL OF DIFFICULTY: MODERATE

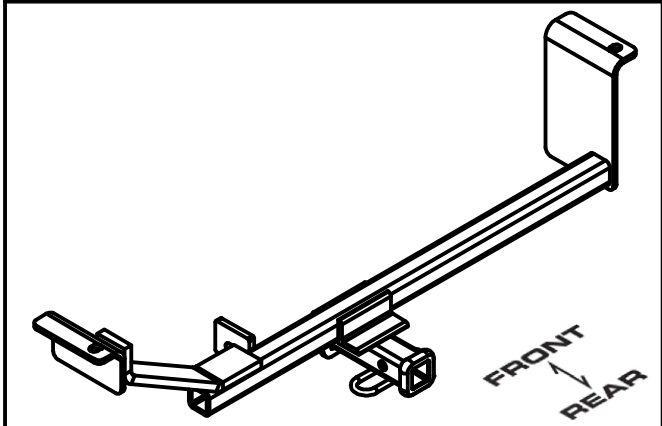
EASY	MODERATE	CHALLENGING
	REVERSE FISHWIRE HARDWARE	
	TEMPORARILY LOWER EXHAUST	
	HOLE ENLARGEMENT REQUIRED	

VEHICLE PHOTO:



REPRESENTATIVE PHOTO

HITCH ILLUSTRATION:



MAKE SURE YOUR HITCH MATCHES

PERIODICALLY CHECK THIS RECEIVER HITCH TO ENSURE ALL FASTENERS ARE TIGHT AND ALL STRUCTURAL COMPONENTS ARE SOUND

CURT Manufacturing LLC. warrants this product to be free of defects in material and/or workmanship at the time of retail purchase by the original purchaser. If the product is found to be defective, CURT Manufacturing LLC. may repair or replace the product at their option, when the product is returned, prepaid, with proof of purchase. Alteration to, misuse of, or improper installation of this product voids the warranty. CURT Manufacturing LLC.'s liability is limited to repair or replacement of products found to be defective, and specifically excludes liability for incidental or consequential loss or damage.

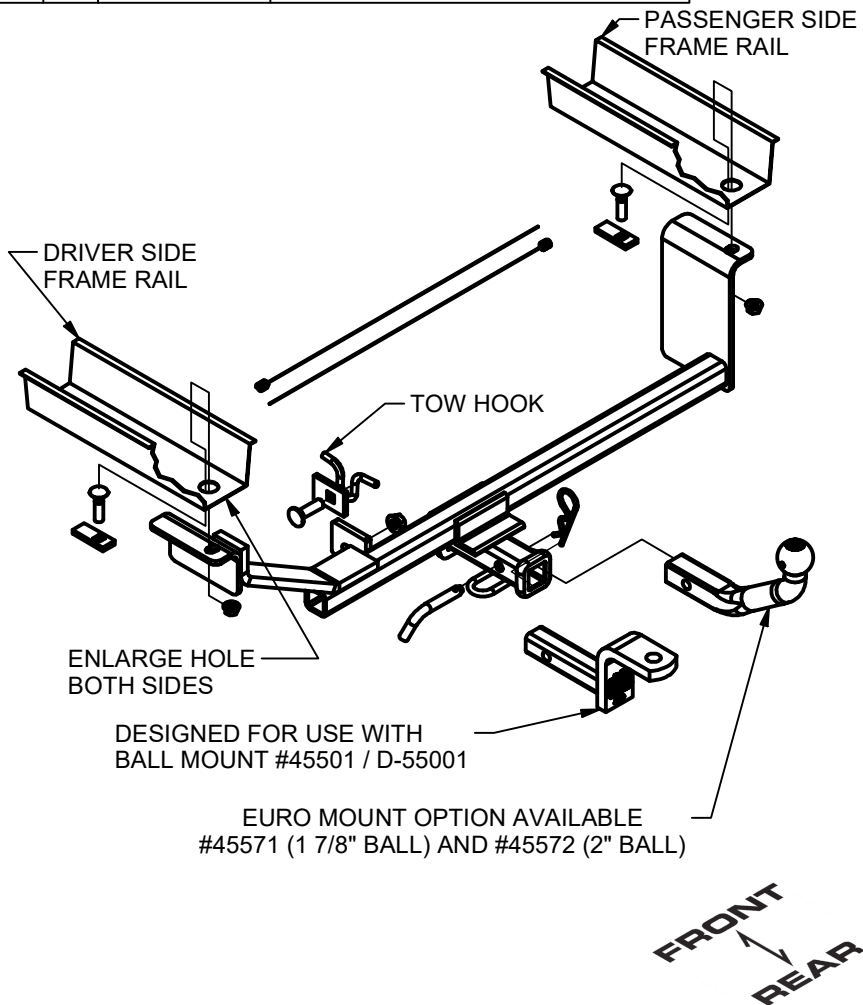
For more information log onto www.curtmfg.com

This product complies with safety specifications and requirements for connecting devices and towing systems of the state of New York, V.E.S.C.Regulation V-5 and SAE J684.

SCAN FOR MORE INFO

INSTALLATION WALKTHROUGH:

Parts List			
ITEM	QTY	PART NUMBER	DESCRIPTION
1	2	10-10314	BOLT,CAR,7/16-14 UNC,1-3/4,GRD8,YZ
2	2	CM-SP2	.250 x .88 x 2.25" SPACER
3	2	20-00103	NUT,SER-FLANGE,7/16-14 UNC,GRD8,YZ
4	2	7_16 FISHWIRE	7/16" FISHWIRE
5	1	10-10272	BOLT,CAR,1/2-13 UNC,1-3/4,GRD8,YZ
6	1	CM-SP26	.250 x 1.50 x 2.25" SPACER
7	1	20-00062	NUT, SER-FLANGE,1/2-13 UNC,GRD8,YZ



1. Lower exhaust by disconnecting exhasut hangers from rubber isolators, one forward and one rearward of muffler.



2. Enlarge hole at the end of each frame rail to accommodate square hole spacers and 7/16" carriage bolts.

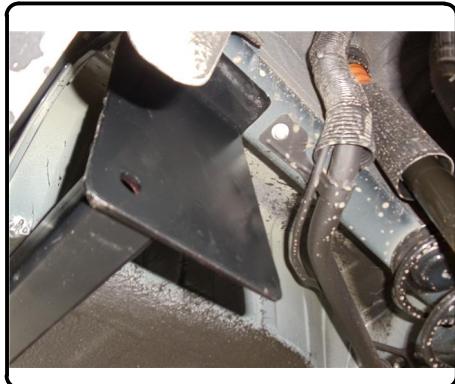


INSTALLATION WALKTHROUGH:

3. Reverse fishwire square hole spacers and 7/16" carriage bolts up through hole enlarged in Step 2 and back down through same hole.



4. Raise hitch into position and loosely attach 7/16" hex flange nuts to carriage bolts.



5. Install 1/2" carriage bolt with large square hole spacer through tow hook and support bar on hitch and fasten with 1/2" flange nut, as shown.



6. Torque 7/16" hardware to 70 lb-ft.
Torque 1/2" hardware to 110 lb-ft.

Installation is complete



11316

CHEVROLET SPARK (INCLUDING MODELS WITH GROUND EFFECTS)

9/30/2020

GROSS LOAD CAPACITY WHEN USED AS A WEIGHT CARRYING HITCH: 2,000 LBS. TRAILER WEIGHT & 200 LBS. TONGUE WEIGHT.

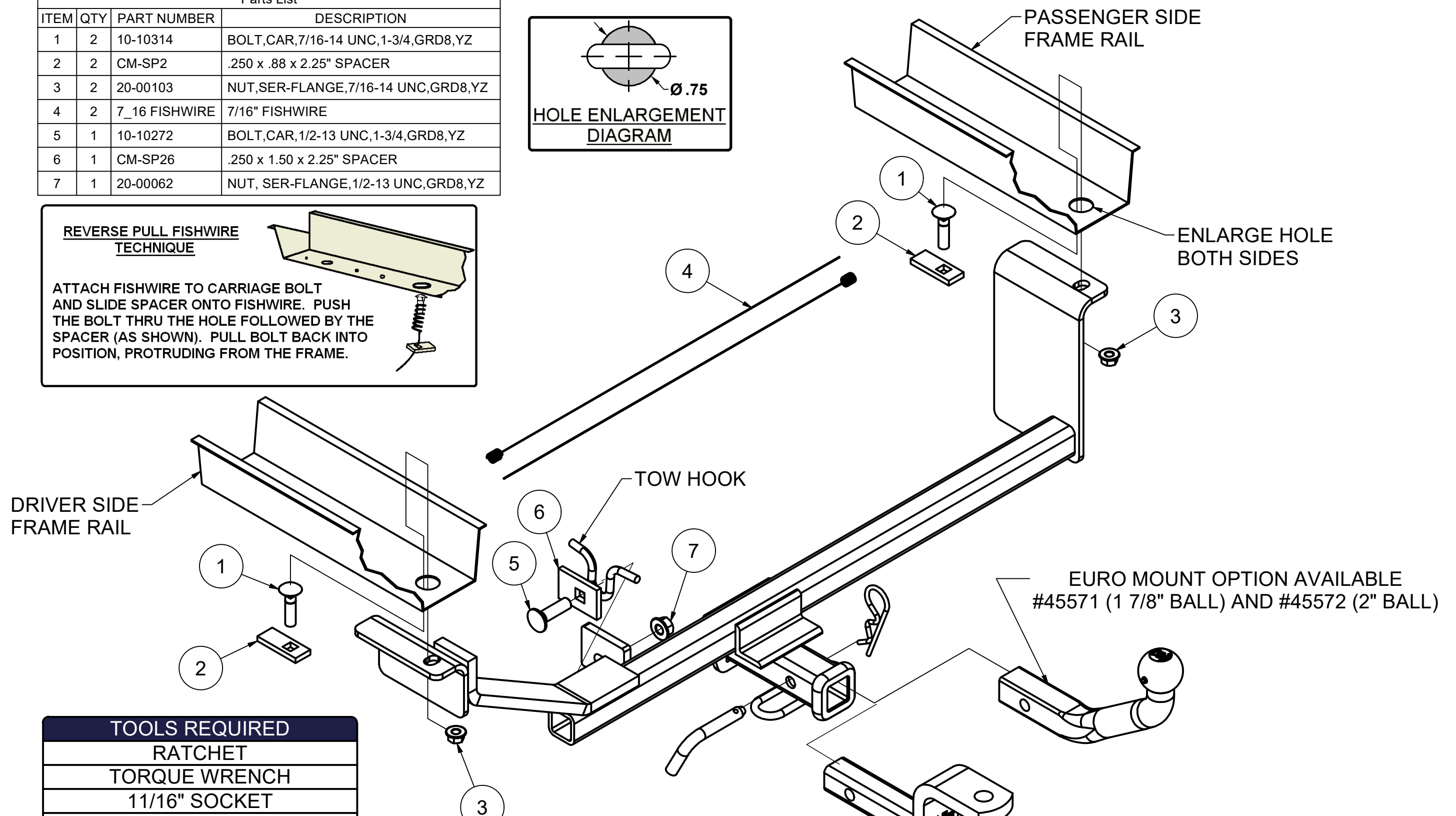
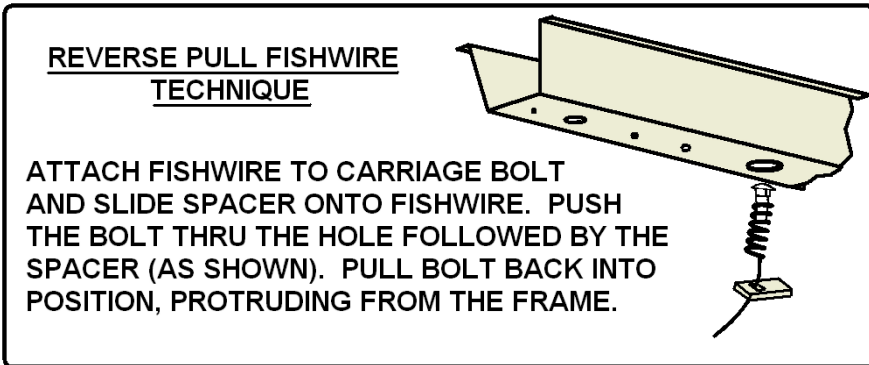
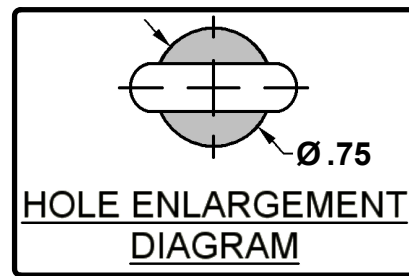
DO NOT EXCEED VEHICLE MANUFACTURER'S RECOMMENDED TOWING CAPACITY.

WARNING: ALL NON-TRAILER LOADS APPLIED TO THIS PRODUCT MUST BE SUPPORTED BY 18050 STABILIZING STRAPS.

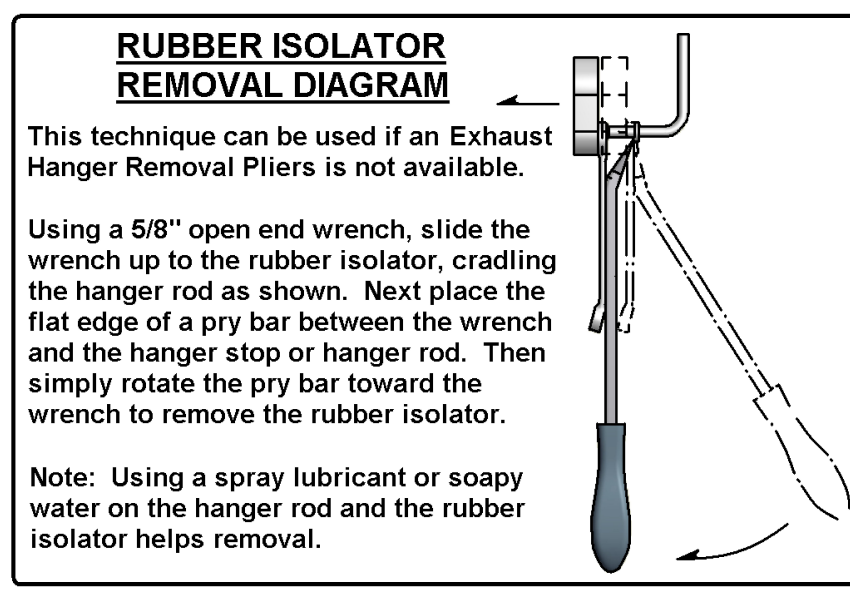
** FAILURE TO PROPERLY SUPPORT NON-TRAILER LOADS WILL VOID PRODUCT WARRANTY**

HAVING INSTALLATION QUESTIONS? CALL TECHNICAL SUPPORT AT 877-287-8634

Parts List			
ITEM	QTY	PART NUMBER	DESCRIPTION
1	2	10-10314	BOLT,CAR,7/16-14 UNC,1-3/4,GRD8,YZ
2	2	CM-SP2	.250 x .88 x 2.25" SPACER
3	2	20-00103	NUT,SER-FLANGE,7/16-14 UNC,GRD8,YZ
4	2	7_16 FISHWIRE	7/16" FISHWIRE
5	1	10-10272	BOLT,CAR,1/2-13 UNC,1-3/4,GRD8,YZ
6	1	CM-SP26	.250 x 1.50 x 2.25" SPACER
7	1	20-00062	NUT, SER-FLANGE,1/2-13 UNC,GRD8,YZ



TOOLS REQUIRED
RATCHET
TORQUE WRENCH
11/16" SOCKET
3/4" SOCKET
SPRAY LUBRICANT
PRY BAR
DIE GRINDER



HITCH WEIGHT: 26 LBS.

INSTALL TIME

PROFESSIONAL: 20 MINUTES

NOVICE (DIY): 45 MINUTES

INSTALL NOTES:

- REVERSE FISHWIRE HARDWARE
- LOWER EXHAUST
- HOLE ENLARGEMENT REQUIRED

DESIGNED FOR USE WITH BALL MOUNT #45501 / D-55001



INSTALLATION STEPS

1. Lower exhaust by disconnecting exhasut hangers from rubber isolators, one forward and one rearward of muffler.
2. Enlarge hole at the end of each frame rail to accommodate square hole spacers and 7/16" carriage bolts.
3. Reverse fishwire square hole spacers and 7/16" carriage bolts up through hole enlarged in Step 2 and back down through same hole.
4. Raise hitch into position and loosely attach 7/16" hex flange nuts to carriage bolts.
5. Install 1/2" carriage bolt with large square hole spacer through tow hook and support bar on hitch and fasten with 1/2" hex flange nut, as shown.
6. Torque 7/16" hardware to 70 lb-ft. Torque 1/2" hardware to 110 lb-ft.
7. Raise exhaust back into position.

PERIODICALLY CHECK THIS RECEIVER HITCH TO ENSURE THAT ALL FASTENERS ARE TIGHT AND THAT ALL STRUCTURAL COMPONENTS ARE SOUND.

Curt Manufacturing LLC., warrants this product to be free of defects in material and/or workmanship at the time of retail purchase by the original purchaser. If the product is found to be defective, Curt Manufacturing LLC., may repair or replace the product, at their option, when the product is returned, prepaid, with proof of purchase. Alteration to, misuse of, or improper installation of this product voids the warranty. Curt Manufacturing LLC.'s liability is limited to repair or replacement of products found to be defective, and specifically excludes liability for incidental or consequential loss or damage.