

11293**MITSUBISHI ECLIPSE**

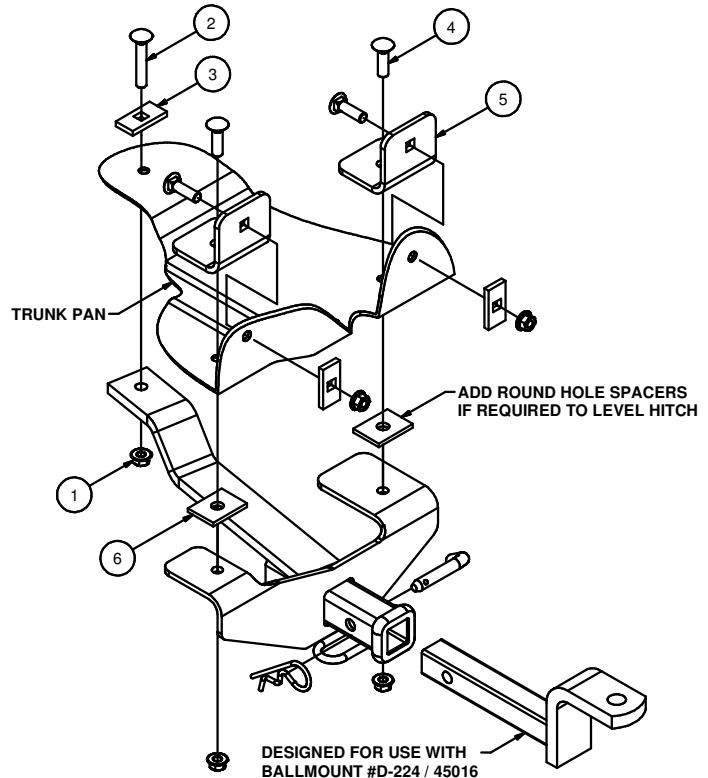
11/26/2012

GROSS LOAD CAPACITY WHEN USED AS A WEIGHT CARRYING HITCH: 2,000 LBS. TRAILER WEIGHT & 200 LBS. TONGUE WEIGHT.

*****DO NOT EXCEED VEHICLE MANUFACTURER'S RECOMMENDED TOWING CAPACITY.*******WARNING: ALL NON-TRAILER LOADS APPLIED TO THIS PRODUCT MUST BE SUPPORTED BY AUXILIARY STABILIZING STRAPS.****** FAILURE TO PROPERLY SUPPORT NON-TRAILER LOADS WILL VOID PRODUCT WARRANTY****

HAVING INSTALLATION QUESTIONS? CALL TECHNICAL SUPPORT AT 1-800-798-0813

| Parts List | | | |
|------------|-----|-----------------|--|
| ITEM | QTY | PART NUMBER | DESCRIPTION |
| 1 | 5 | 7/16-14 | HEX FLANGE NUT |
| 2 | 1 | 7/16-14 x 2 1/2 | CARRIAGE BOLT |
| 3 | 3 | CM-SP7 | .250 x 1.00 x 2.00" SQUARE HOLE SPACER |
| 4 | 4 | 7/16-14 x 1 1/2 | CARRIAGE BOLT |
| 5 | 2 | CM-11293-BP | .250" BACKING PLATE |
| 6 | 2 | CM-SP32 | .188 x 1.50 x 2.00" ROUND HOLE SPACER |



HITCH WEIGHT: 19 LBS.

INSTALL TIME

PROFESSIONAL: 30 MINUTES

NOVICE (DIY): 60 MINUTES

INSTALL NOTES:

- DRILLING REQUIRED
- TEMPORARILY REMOVE SPARE TIRE

INSTALLATION STEPS

1. Remove the spare tire. Remove the drain plug from the passenger side of the trunk.
2. Place the angle bracket with carriage bolt over existing hole inside the trunk; setting against the bottom and back of the trunk pan.
3. Raise the hitch into position under the angle bracket and attach the fasteners as shown. Hand tighten the hitch to the angle bracket fasteners at this time.
4. Align the hitch using the back of the trunk pan and the rib running along the trunk pan with the location of the hole on the hitch bar. Check the location of the hitch on the vehicle. NOTE: The center rib on the trunk pan is not on the center of the vehicle.
5. Using the hitch as a template, drill the hole through the rib and into the trunk. Secure the hitch using fasteners as shown.
6. With the hitch in position and both angle brackets sitting against the rear of the trunk pan, drill the holes through the rear of the trunk pan using the angle brackets as templates.
7. Remove (2) 10mm fasteners from fascia and push the fascia out of the way for access to trunk pan fasteners.
8. Torque all 7/16" fasteners to 70 lb-ft.
9. Seal drilled or existing drain holes, reinstall the spare tire, and re-attach fascia.

PERIODICALLY CHECK THIS RECEIVER HITCH TO ENSURE THAT ALL FASTENERS ARE TIGHT AND THAT ALL STRUCTURAL COMPONENTS ARE SOUND.

Curt Manufacturing Inc., warrants this product to be free of defects in material and/or workmanship at the time of retail purchase by the original purchaser. If the product is found to be defective, Curt Manufacturing Inc., may repair or replace the product, at their option, when the product is returned, prepaid, with proof of purchase. Alteration to, misuse of, or improper installation of this product voids the warranty. Curt Manufacturing Inc.'s liability is limited to repair or replacement of products found to be defective, and specifically excludes liability for incidental or consequential loss or damage.