



CURT™

The **FIRST** Name
in Towing Products™

GOOSENECK HITCHES



Quality craftsmanship and intelligent design define the CURT gooseneck hitch line. Our Double Lock EZr was designed with the dealer and installer in mind. We focused on a faster installation process, saving time and money.

We offer three popular under-bed hitch styles that fit into the same installation kits. This allows dealers to stock a wide variety of hitches while keeping inventory requirements low.

CURT offers many other gooseneck hitches, from simple flat plates to complex folding ball models. To complete the towing setup, we offer a full line of brake controls and wire-harness extensions, all ready to help your customers Bring It®!

With tried and true designs like the Double Lock and Folding Ball, you cannot go wrong with a CURT gooseneck hitch.

Benefits of the CURT gooseneck hitch line



First-to-market focus for custom installation kits



All gooseneck hitch installation kits are made in the USA



Under-bed designs for minimal truck bed interference

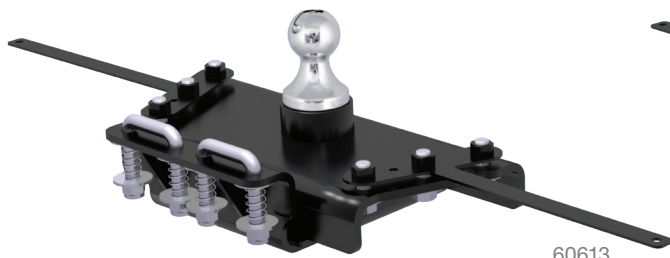


30k

GTW

RAM 2500 & 3500 GOOSENECK HITCHES

- Factory-style gooseneck trailer ball for quick and easy removal
- Quickly bolts in from underneath the truck bed in 45 minutes or less
- Requires no additional hardware or installation kits
- Includes heavy duty, 5/8" safety chain loops



60613



60614

Bulk#	GTW / Vertical Load	Description	Years	Finish
60613	30,000 / 7,500 lbs.	RAM 3500 gooseneck hitch	13 - 14	Carbide
60614	30,000 / 7,500 lbs.	RAM 2500 gooseneck hitch	2014	Carbide
60601	30,000 / 7,500 lbs.	Factory-style replacement ball	--	Chrome



60601

25k

GTW

5TH WHEEL RAIL GOOSENECK HITCHES

- Four-pin installation and removal for easy access to truck bed
- Spyder includes, safety chain hook-ups, welded trailer ball and pins & clips
- Bent plate includes pins & clips and welded trailer ball with 3" offset from front to rear
- Mounts to all industry standard 5th wheel rails

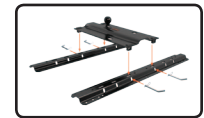


16085



16055

Pkg#	Ball Size	Ball Offset	Finish	GTW	Description
16055	2 5/16"	3"	Carbide	25,000 lbs.	Bent plate gooseneck hitch
16085	2 5/16"	--	Carbide	25,000 lbs.	Spyder gooseneck hitch

Attaches to
5th wheel railsAttaches to
5th wheel rails**20k**

GTW

X5 ADAPTER PLATE DOUBLE LOCK TO 5TH WHEEL

- Converts Double Lock and competitive gooseneck hitches to 5th wheel rails
- For use with CURT and other common 5th wheel hitches up to 20,000 lbs.



16210

Bulk#	Shank Style	Fits
16210	Round shank	CURT 60607, 60615, 60620, 60625
16220	Round shank	CURT EZr 60611 and 60612
16310	Square shank	Competitive products

Replaces Double
Lock trailer ballQuickly provides
5th wheel rails

30k
GTW

UNDER-BED DOUBLE LOCK EZr™ GOOSENECK HITCH & INSTALLATION KITS

Installation kit required
See table below



Double Lock EZr center section and installation kit in truck bed



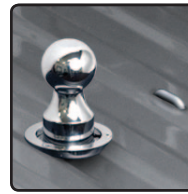
Exclusive center locator saves time



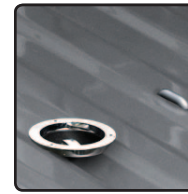
Simply drill up from under the bed



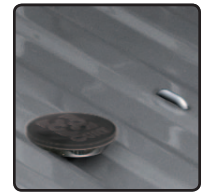
Use the pilot hole for error-free drilling



Ball up, ready for coupling



Ball stored, without rubber cover



Rubber cover included

EASY TO INSTALL

Exclusive Center Locator

- Eliminates the need to measure where the ball hole should be
- Eliminates errors caused by drilling
- **Orange** shavings indicate when to stop drilling the trailer ball hole
- Patent# D685,299 S

Optimum Strength

- Up to 30,000 lbs. GTW
7,500 lbs. vertical load
Never exceed vehicle's max GTW
- Strong, spring-loaded 5/8" safety chain loops and grade 8 hardware
- Fortified center section
- Meets proposed SAE J2638 testing standards

EZr™ Installation Kits

- Designed for fast, easy installation
- No need to lower exhaust on Ford, Chevy or most Dodge / RAM trucks
- No need to relocate cable hanger and ground wire on Dodge / RAM trucks
- Uses carriage bolts when possible so only one wrench is needed
- Eliminates sheet metal cutting along inside of fender to insert rails
- Drill safety chain loop holes from underside of the truck bed, No measuring required

One-Person Installation

- Kits require only one person to install

EASY TO USE

Flip-Over Ball

- Flip-and-store ball helps avoid trailer ball loss and keeps truck bed free of obstruction
- Chrome trim ring for a finished look
- Rubber trim and hole cover provide protection and prevent corrosion

Sturdy, Reversible Handle

- Heavy duty handle can be positioned on either side of the truck

Double Lock Security

- Double-locking pins in trailer ball provide peace of mind

Limited Lifetime Warranty

Pkg#	Description	Make	Ball Size	Finish	GTW / Vertical Load
Double Lock EZr Gooseneck Hitches					
60611	Double Lock EZr gooseneck hitch	Chevrolet / GMC	2 5/16"	Carbide	30,000 / 7,500 lbs.
60612	Double Lock EZr gooseneck hitch	Dodge / RAM and Ford	2 5/16"	Carbide	30,000 / 7,500 lbs.
Double Lock EZr Gooseneck Installation Kits					
Bulk#	Make	Model	Years	EZr Part#	Notes
60605	Chevrolet / GMC	2500 and 3500 Silverado / Sierra	11 - 14	60611	1, ✗
60660	Dodge / RAM	RAM 2500	03 - 13	60612	1, 2, 3, ✗
60660	Dodge / RAM	RAM 3500	03 - 12	60612	1, 2, 3, ✗
60645	Ford	Super Duty F-250 and F-350	11 - 14	60612	✗

1. The passenger side wheel well flange must be bent for frame rail access
 2. Exhaust may have to be permanently lowered on power wagon and mega cab applications
 3. Check inverted ball clearance with heavy loads on two-wheel drive
- ✗ = No frame drilling required

30k
GTW

UNDER-BED DOUBLE LOCK GOOSENECK HITCHES

- Up to 30,000 lbs. GTW / 7,500 lbs. vertical load
Never exceed vehicle's maximum gross weight rating
- Flip-and-store ball helps avoid trailer ball loss and keeps truck bed free of obstruction
- Heavy duty handle can be positioned on either side of the vehicle
- Double-locking pins in trailer ball provides peace of mind
- Removable, chrome 2 5/16" trailer ball
- Chrome trim ring provides a finished look
- Rubber trim and hole cover provide protection and prevent corrosion
- Spring-loaded safety chain loops and grade 8 hardware included
- Durable carbide powder coat finish
- **Limited lifetime warranty**

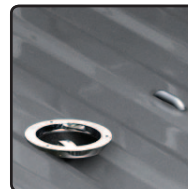


60607

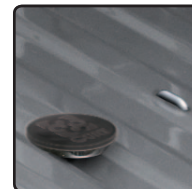
Installation kit required. See guide on curtmfg.com



Ball up, ready for coupling



Ball stored, without rubber cover



Rubber cover included



60615



60620



60625

Pkg#	Description	Make / Model	Ball Size	Finish	GTW / Vertical Load
60607*	Double Lock gooseneck hitch	Fits all applications not listed below	2 5/16"	Carbide	30,000 / 7,500 lbs.
60615	Double Lock gooseneck hitch	Chevrolet 1500, 07 - 13 new body only	2 5/16"	Carbide	30,000 / 7,500 lbs.
60620	Double Lock gooseneck hitch	Nissan Titan, 04 - 12 only	2 5/16"	Carbide	30,000 / 7,500 lbs.
60625	Double Lock gooseneck hitch	Toyota Tundra, 00 - 06 only	2 5/16"	Carbide	30,000 / 7,500 lbs.

Installation kit required for these products, see guide on curtmfg.com

* Attractive, full-color retail packaging

UNDER-BED DOUBLE LOCK GOOSENECK HITCH ACCESSORIES

- Accessories for added clearance and easier installation
- Trailer balls fit all Double Lock gooseneck hitches



60602



60603



60616



60606

Bulk#	Pkg#	Description	Ball Size	Ball Rise	Ball Offset	GTW / Vertical Load
60616	--	Replacement ball for all Double Lock gooseneck hitches	2 5/16"	--	--	30,000 / 7,500 lbs.
--	60602	Moves pivot point rearward for added cab clearance	2 5/16"	--	4"	20,000 / 5,000 lbs.
--	60603	Added clearance for trucks with plastic or rubber bed liners	2 5/16"	1"	--	30,000 / 7,500 lbs.
60606	--	Supports gooseneck hitch for one-person installation	--	--	--	--

30k
GTW

UNDER-BED QUICK GOOSE II GOOSENECK HITCHES

- Up to 30,000 lbs. GTW / 7,500 lbs. vertical load
Never exceed vehicle's maximum gross weight rating
- Two-handle operation, for raising and lowering ball, eliminates need to climb into truck bed
- Drop-ball storage helps avoid trailer ball loss and keeps truck bed free of obstruction
- Chrome 2 5/16" trailer ball
- Heavy duty handles
- Chrome trim ring provides a finished look
- Rubber trim and hole cover provide protection and prevent corrosion
- Spring-loaded safety chain loops and grade 8 hardware included
- Durable carbide powder coat finish
- Attractive, full-color retail packaging
- **Limited lifetime warranty**



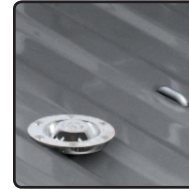
Installation kit required. See guide on curtmfg.com



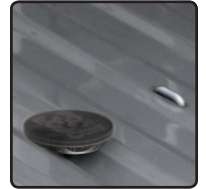
Raise and lower the trailer ball without climbing in truck bed



Ball up, ready for coupling



Ball stored, without rubber cover



Rubber cover included

Pkg#	Description	Make	Ball Size	Finish	GTW / Vertical Load
60630	Quick Goose II gooseneck hitch	Chevrolet / GMC and Ford	2 5/16"	Carbide	30,000 / 7,500 lbs.
60640	Quick Goose II gooseneck hitch	Dodge / RAM and Ford	2 5/16"	Carbide	30,000 / 7,500 lbs.

Installation kit required for these products, see guide on curtmfg.com

30k
GTW

UNDER-BED FOLDING BALL GOOSENECK HITCH

- Up to 30,000 lbs. GTW / 7,500 lbs. vertical load
Never exceed vehicle's maximum gross weight rating
- Permanently attached trailer ball folds down and out of the way, eliminating theft or loss
- Bed remains flat and free of obstruction
- Spring-loaded safety chain loops and grade 8 hardware included
- Patent# D656,437 and D664,076
- Durable carbide powder coat finish
- Attractive, full-color retail packaging
- **Limited lifetime warranty**



Installation kit required. See guide on curtmfg.com



Pull ball pin, raise cover



Lower ball, close cover



Ball stored

Pkg#	Description	Ball Size	Finish	GTW / Vertical Load
61652	Under-bed, folding ball gooseneck hitch	2 5/16"	Carbide	30,000 / 7,500 lbs.

Installation kit required for this product, see guide on curtmfg.com

30k
GTW

OVER-BED FOLDING BALL GOOSENECK HITCH

- Up to 30,000 lbs. GTW / 7,500 lbs. vertical load
Never exceed vehicle's maximum gross weight rating
- Permanently attached trailer ball folds down and out of the way, eliminating theft or loss
- T-handle for easy use
- Spring loaded safety chain loops and grade 8 hardware included
- Patent#: 5,571,270; 5,755,452; 5,435,585
- Attractive, full-color retail package
- **Limited lifetime warranty**



61052

Installation kit required.
See guide on curtmfg.com



Pull ball pin, raise cover



Lower ball, close cover



Ball stored

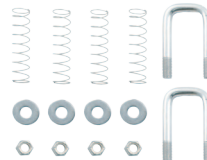
Pkg#	Description	Ball Size	Finish	GTW / Vertical Load
61052	Over-bed, folding ball gooseneck hitch	2 5/16"	Carbide	30,000 / 7,500 lbs.

Installation kit required for this product, see curtmfg.com

30k
GTW

OVER-BED FIXED BALL GOOSENECK HITCH

- Reinforcement required to reach max gross trailer weight rating
- Safety chain hook-ups sold separately
- Durable carbide powder coat finish



66113



61100

Installation kit required.
See guide on curtmfg.com

Bulk#	Description	Plate Size	Ball Size	Finish	GTW
61100	Flat plate with fixed trailer ball	12" x 12"	2 5/16"	Carbide	30,000 lbs.
66113	Safety chain U-bolt kit	--	--	--	--

30k
GTW

OVER-BED FLAT PLATE GOOSENECK HITCH

- Reinforcement required to reach max gross trailer weight rating
- The only ready-to-install flat plate
- Durable carbide powder coat finish



65500

Installation kit required.
See guide on curtmfg.com

Bulk#	Description	Plate Size	Ball Size	Finish	GTW
65500	Flat plate with fixed trailer ball and two 1/2" forged D-rings	13" x 48"	2 5/16"	Carbide	30,000 lbs.



GOOSENECK INSTALLATION KITS ARE PROUDLY MADE IN THE USA

UNDER-BED INSTALLATION KITS

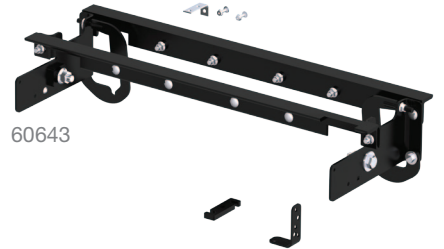
- Rated to vehicle's maximum gross weight rating
Never exceed vehicle's maximum gross weight rating
- Laser cut for precise fit
- Grade 8 mounting hardware included
- CURT installation kits reduce inventory. They are designed to fit multiple vehicles and CURT goosenecks
- Visit curtmfg.com for application specific part numbers



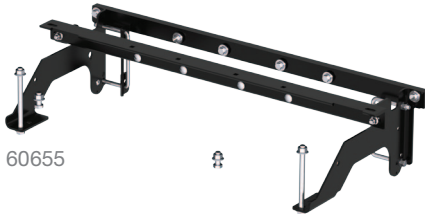
60637



60641



60643



60655



60665



60667

OVER-BED INSTALLATION KITS

- 20,000 lbs. and 30,000 lbs. kits available
Never exceed vehicle's maximum gross weight rating
- Laser cut for precise fit
- Grade 8 mounting hardware included
- CURT installation kits reduce inventory. They are designed to fit multiple vehicles and CURT goosenecks
- Visit curtmfg.com for application specific part numbers



61219



61503



61509



61506

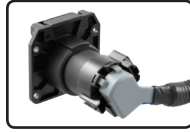


61505



5TH WHEEL & GOOSENECK FACTORY EXTENSION

- Routes a 7-way RV blade socket into truck bed while retaining use of 7-way RV blade at rear of vehicle
- Plugs, or T's, into factory harness
- Right angle plug for easy installation



56000



56001

Pkg#	Length	Fits
56000	10 feet	Chevy, Dodge, Ford, Nissan, Toyota
56001	10 feet	Dodge only
56070	7 feet	Chevy, Dodge, Ford, Nissan, Toyota
56071	7 feet	Dodge only



5TH WHEEL & GOOSENECK UNIVERSAL EXTENSION

- Routes existing 7-way plug at rear of vehicle into truck bed

Pkg#	Length	Description
56080	7'	Fits any 7-way RV blade socket



56080



BRAKE CONTROLS

- Quick plug equipped, making installation a snap
- See curtmfg.com for our complete brake control line
- 51130 Reflex is made in the USA



51140



51130



51120



51110

CURT Brake Controls Quick Reference

Model Name	Pkg#	6-pack Bulk#	Spare Bracket#	Axles				Activation	Display	Mount Angles	Level Adjust	Warranty
				1	2	3	4					
TriFlex	51140	51142	51144	X	X	X	X	Inertia tri-axis accelerometer	Digital	-20° to +70°*	Auto	Limited lifetime
Reflex	51130	51132	--	X	X	X	X	Inertia dual-axis accelerometer	Digital	-20° to +70°*	Auto	Limited lifetime
Discovery	51120	51122	51124	X	X	X	X	Time-based	Digital	Any	Auto	Limited lifetime
Venturer	51110	--	51114	X	X	X	-	Time-based	LED	Any	Auto	Limited lifetime

* TriFlex and Reflex can be mounted up to 20° off the center line of the vehicle and / or up to 20° off horizontal laterally



Scan for more information

Connect with us!



Online
CURTMFG.COM

Toll-free
[877.CURTMFG](tel:877.CURTMFG)