



# CURT™

The **FIRST** Name  
in Towing Products™

## RV TOWING



# Bring It

CURT offers a full line of 5th wheel hitches and rollers in 16K, 20K and 24K capacities. Our flagship Q-series 5th wheel hitch is the quietest on the market; our dual jaws wrap around the trailer's kingpin to eliminate clanking, and numerous rubber inserts inside the hitch body dampen noise.

Our WD line contains complete kits that include anti-sway bars, pre-torqued trailer balls and pre-assembled spring-bar chains. We have also added both higher and lower capacity options, helping our valued dealers support their customers.

### Advantages of the CURT RV Towing Line



Full line of 5th wheel hitches and rollers



Weight distribution kits with sway bar



Wide variety of RV towing accessories

In addition to our 5th wheel and weight distribution hitches, CURT offers a full line of RV towing products including trailer and bumper hitches, sway control units, 5th wheel installation brackets and accessories, brake controls and wiring.

Whether your customer tows a camper or a heavy toy hauler, we have the hitch and towing accessories to help them Bring It®!



# Q-SERIES HITCHES

**16K**  
GTW

## Q16 5TH WHEEL HITCH

- Up to 16,000 lbs. GTW / 4,000 lbs. vertical load  
Never exceed vehicle's maximum gross weight rating
- High-strength interlocking cast jaws fully wrap the kingpin to eliminate noise
- Fully articulating torsion head for controlled coupling and a stable, quiet ride
- Extra wide head opening for easier coupling
- Three-position coupling indicator is clearly visible from the vehicle cab
- Lockable handle self-resets to the couple position when hitch is uncoupled
- Cast yoke, with poly-torsion inserts, suppresses shock loads and reduces noise
- Compatible with kingpin extension boxes, including common pivoting pin boxes
- Fast, one-pin head removal makes moving hitch to another vehicle easy
- Attractive design - looks great in truck beds
- Mounts to industry-standard rails
- Includes polyethylene lube plate
- Meets proposed SAE J2638 testing standards
- Durable carbide powder coat finish
- **Limited lifetime warranty**



16120

Installation kits  
available on [curtmfg.com](http://curtmfg.com)

### Three-position coupling indicator



Back of  
Q16 head

 **UNCOUPLE**

Jaws locked open. Indicates it is safe to pull the truck away from the trailer. Do not couple!

 **COUPLE**

Jaws ready to couple. Indicates it is safe to back the truck in for coupling to your trailer.

 **TOW**

Jaws locked closed. Indicates it is safe to tow the trailer. Visibly inspect to ensure proper coupling.



Extra wide head opening for easy coupling and the high-strength interlocking jaws eliminate noise



Fully articulating torsion head for controlled coupling and a stable, quiet ride



Lockable handle self-resets to the couple position when the hitch is uncoupled



Cast yoke, with poly-torsion inserts, suppresses shock loads and reduces noise



16520



16521



16621

Pkg#	Description	GTW / Vertical Load	Height	Finish
16120	Q16 5th wheel	16,000 / 4,000 lbs.	13" - 17"	Carbide
16121	Q16 5th wheel with base rails (16200)	16,000 / 4,000 lbs.	13" - 17"	Carbide
16520	Q16 5th wheel head unit (for use with the 16560 R16 roller)	16,000 / 4,000 lbs.	--	Carbide
16521	Q16 5th wheel (16520) with R16 roller (16560)	16,000 / 4,000 lbs.	17 1/2" - 21 1/2"	Carbide
16621	Q16 5th wheel (16520) with R16 roller (16560) and base rails (16200)	16,000 / 4,000 lbs.	17 1/2" - 21 1/2"	Carbide
16920	Q16 replacement leg kit and hardware	--	--	Carbide

For replacement parts visit [curtmfg.com](http://curtmfg.com)

**24K**  
GTW

## Q24 5TH WHEEL HITCH



16245

- Up to 24,000 lbs. GTW
- Spherical axial bearing ensures smooth, quiet towing and allows for unimpeded head movement
- Dual jaws provide 360° kingpin contact
- Coupling indicators visible from vehicle cab
- Self-aligning head
- Short throw, single-handle operation
- Wide head opening for easy coupling
- Lockable
- Mounts to industry-standard rails
- Three grease fittings for easy lubrication
- Includes polyethylene lube plate
- Meets proposed SAE J2638 testing standards
- Durable carbide powder coat finish
- Ten year limited warranty

**20K**  
GTW

## Q20 5TH WHEEL HITCH



16130

24K Part#	20K Part#	Description	Height
16245	16130	5th wheel	13" - 17"
16246	16131	5th wheel with base rails*	13" - 17"
16545	16530	5th wheel head (use with roller)	--
16546	16536	5th wheel head with roller	17.5" - 21.5"
16646	16636	5th wheel head with roller and rails*	17.5" - 21.5"

### Three-position coupling indicator



\* Rail part# 16200

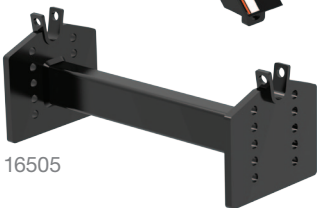
## E-SERIES HITCHES

**16K**  
GTW

## E16 5TH WHEEL HITCH



16115



16505

Adapts the 16115 or 16116 head unit to CURT rollers  
Included in 16515, 16516 and 16616 kits

- Single handle operation
- Auto-locking mechanism
- Dual-pivot head
- Four position height adjustment
- 10° lateral movement
- Anti-rattle skid plate
- Mounts to industry standard rails
- Meets or exceeds current and proposed industry standards
- Durable carbide powder coat finish
- Five year limited warranty

16K Part#	Description	Height
16115	5th wheel	13" - 17"
16116	5th wheel and base rails*	13" - 17"
16515	5th wheel head (use with roller)	--
16516	5th wheel head with roller	14" - 17"
16616	5th wheel head with roller and rails*	14" - 17"

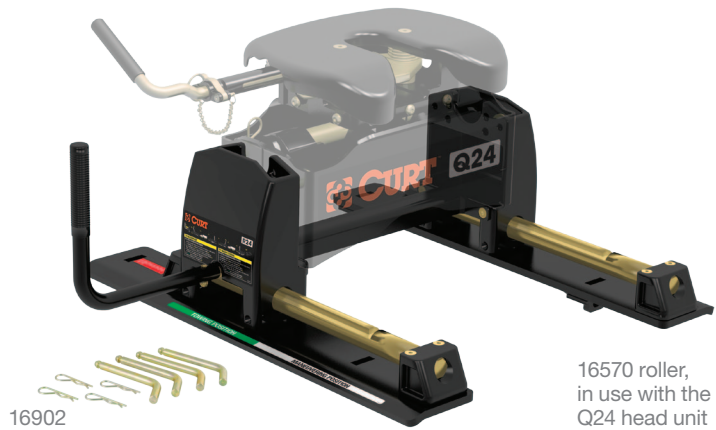
\* Rail part# 16200



# 5TH WHEEL ROLLERS & LEGS

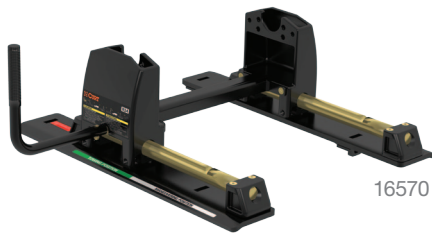
## 5TH WHEEL HITCH ROLLER UNITS

- Up to 24,000 lbs. GTW
- Non-binding rods
- True rolling unit - not just a slider
- 12" travel - most competitive models only offer 10"
- Wheels bear the weight, not the rods - Many competitive models rely on hollow rods to bear the weight
- Mounts to industry-standard rails
- Durable carbide powder coat finish
- **Ten year limited warranty (20K and 24K)**
- **Five year limited warranty (16K)**



16570 roller, in use with the Q24 head unit

### **24K** GTW **R24** ROLLER



16570

### **20K** GTW **R20** ROLLER



16550

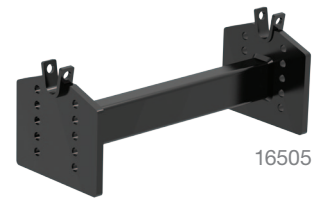
### **16K** GTW **R16** ROLLER



16560

Pkg#	Description	GTW	Finish
16570	R24 5th wheel hitch roller unit	24,000 lbs.	Carbide
16550	R20 5th wheel hitch roller unit	20,000 lbs	Carbide
16560	R16 5th wheel hitch roller unit	16,000 lbs.	Carbide
16505	Included in 16515, 16516 and 16616 kits. Adapts 16115 or 16116 head to CURT rollers	--	Carbide

For replacement parts visit [curtmfg.com](http://curtmfg.com)



16505

## FORD & RAM OEM COMPATIBLE 5TH WHEEL LEGS

- Up to 24,000 lbs. GTW
- Converts any CURT 5th wheel hitch head to Ford and RAM's OEM under-bed hitch platforms
- Quarter-turn anchoring system for quick installation and removal
- Anchors can be adjusted to eliminate chocking between the legs and under-bed rails
- Made in the USA
- Durable carbide powder coat finish
- **Limited lifetime warranty**



16021



16017

Pkg#	Make	GTW	Finish
16021	RAM	Up to 24,000 lbs.	Carbide
16017	Ford	Up to 24,000 lbs.	Carbide

# 5TH WHEEL BRACKETS

## CUSTOM 5TH WHEEL BRACKET KITS

- Reduces or eliminates drilling, which can cut installation times in half
- Use in combination with 16104 / 16204 rails
- No need for universal brackets and hardware
- For application information, see [curtmfg.com](http://curtmfg.com)

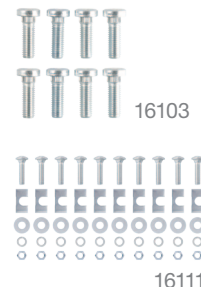


## UNIVERSAL 5TH WHEEL BASE RAILS

- Can be used with all CURT and competitive 5th wheels, rollers, bent plate goosenecks and Spyder goosenecks
- Some vehicles require semi-custom brackets, see [curtmfg.com](http://curtmfg.com)



Gloss#	Carbide#	Zinc#	Multi-Pack#	Description
16100	16200	--	--	Two 5th wheel base rails (with 16101 universal brackets)
16104	16204	--	--	Two 5th wheel base rails only (without 16101 universal brackets)
16101	--	--	--	Universal installation brackets and hardware
--	--	16111	--	Universal installation hardware, no brackets included
--	--	16103	16103010	Replacement rail bolts, needed when reinstalling used rails; 16103 contains 8 bolts, 16103010 contains 10 sets of 8 bolts



# 5TH WHEEL ACCESSORIES

## **20K** X5 DOUBLE LOCK TO 5TH WHEEL ADAPTER

- Converts Double Lock and competitive gooseneck hitches to 5th wheel rails
- For use with CURT and other common 5th wheel hitches up to 20,000 lbs.



Quickly provides 5th wheel rails



16210

## RV TOWING ACCESSORIES

- 16000**
  - Installs onto 5th wheel rails with pins
- 16721**
  - Eliminates grease deposits
  - Reduces normal wear and tear when towing
- 16900**
  - Place between rails and 5th wheel to minimize chocking



16000



16721 & 16721025



16900

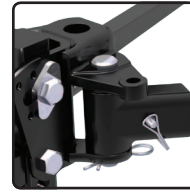
Bulk#	Shank Style	Fits
16210	Round shank	CURT 60607, 60615, 60620, 60625
16220	Round shank	CURT EZr 60611 and 60612
16310	Square shank	Competitive products

Bulk#	Pkg#	Description
--	16000	Includes two pins & clips
16900	16901	5th wheel dampening pad kit
16721	16721025 (bulk 25-pack)	10" 5th wheel lube plate

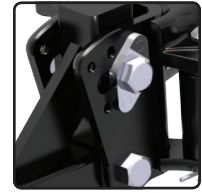
# WEIGHT DISTRIBUTIONS HITCHES

## 2 PIN-STYLE TRUNNION BAR WD HITCHES AND KITS

- Up to 10,000 lbs. GTW / 1,000 lbs. TW  
Never exceed vehicle's maximum gross weight rating
- Evens load, improving control
- Built-in sway control attachment tabs and heavy duty, cast head
- Tilt adjustment feature simplifies setup and installation
- Pin-style attachment spring bars improves strength and durability
- Hook-up brackets and 2" x 2" adjustable shank included
- Durable carbide powder coat finish



Pin-style spring bars improve strength



Tilt adjustment for easy setup & install



17340



17323

Pkg#	GTW	TW	Description
<b>Pin-Style Weight Distribution Hitches</b>			
17340	5,000 - 6,000 lbs.	500 - 600 lbs.	Weight distribution hitch only
17341	6,000 - 8,000 lbs.	600 - 800 lbs.	Weight distribution hitch only
17342	8,000 - 10,000 lbs.	800 - 1,000 lbs.	Weight distribution hitch only
<b>Pin-Style Complete Kits</b>			
17323	8,000 - 10,000 lbs.	800 - 1,000 lbs.	Includes WD hitch (17342), sway bar (17200), pre-torqued 2 5/16" trailer ball (40006), chains pre-assembled to spring bars

## SWAY CONTROL

Sway control units reduce lateral movement, commonly caused by the wind, while pulling a trailer or camper. Two sway control units should be used for maximum control and stability.



Round bar weight distribution system with sway control

Pkg#	Description
17200	Kit includes: - Sway control unit - Trailer-mounted attachment ball and bolts (17201) - Hitch-mounted attachment ball (40093) - Weld-on tab (45822) - Mount reinforcement plate - Attachment clips



17200

## 2 INCH ROUND & TRUNNION BAR WD HITCHES AND KITS

- Round bar up to 14,000 lbs. GTW / 1,400 lbs. TW
- Trunnion bar up to 15,000 lbs. GTW / 1,500 lbs. TW
- Light duty trunnion bar up to 5,000 lbs. GTW / 300 lbs. TW
- Available in kits, including sway control, pre-torqued 2 5/16" trailer ball and chains pre-assembled to spring bars
- Light duty WD is specially designed for use with lightweight trailers and pop-up campers
- Even load, improving control
- Built-in sway control attachment tabs
- Hook-up brackets and 2" x 2" adjustable shank included
- Durable carbide powder coat finish

Pkg#	GTW	TW	Arms
<b>Round Bar Weight Distribution Hitches</b>			
17000	5,000 - 6,000 lbs.	500 - 600 lbs.	--
17001	6,000 - 8,000 lbs.	600 - 800 lbs.	--
17002	8,000 - 10,000 lbs.	800 - 1,000 lbs.	--
17007	10,000 - 14,000 lbs.	1,000 - 1,400 lbs.	--
<b>Round Bar Complete Kits</b>			
17022	8,000 - 10,000 lbs.	800 - 1,000 lbs.	--
17222	10,000 - 14,000 lbs.	1,000 - 1,400 lbs.	--
<b>Trunnion Bar Weight Distribution Hitches</b>			
17300	5,000 - 6,000 lbs.	500 - 600 lbs.	30 5/8"
17301	6,000 - 8,000 lbs.	600 - 800 lbs.	30 5/8"
17302	8,000 - 10,000 lbs.	800 - 1,000 lbs.	30 5/8"
17330	5,000 - 6,000 lbs.	500 - 600 lbs.	28 3/8"
17331	6,000 - 8,000 lbs.	600 - 800 lbs.	28 3/8"
17332	8,000 - 10,000 lbs.	800 - 1,000 lbs.	28 3/8"
17333	10,000 - 15,000 lbs.	1,000 - 1,500 lbs.	28 3/8"
<b>Trunnion Bar Complete Kits</b>			
17322	8,000 - 10,000 lbs.	800 - 1,000 lbs.	28 3/8"
17422	10,000 - 15,000 lbs.	1,000 - 1,500 lbs.	28 3/8"
<b>Trunnion Bar Weight Distribution Hitches</b>			
17345	3,000 - 5,000 lbs.	300 - 500 lbs.	--



## 2 INCH RV TRAILER HITCHES

- For 2" receiver tubes
- Fits frames up to 72"
- Adjustable length



Part#	Description
13701	Fits frames up to 51" wide, 2" drop 5,000/500 lbs. GTW or 6,000/600 lbs. WD
13702	Fits frames up to 51" wide 5,000/500 lbs. GTW or 6,000/600 lbs. WD
13703	Fits frames up to 72" wide, 3,500/350 lbs. GTW

## 2 INCH RV BUMPER HITCHES

- Mounting hardware included



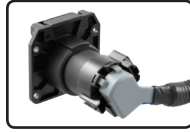
Pkg#	GTW/TW	Description
19100	3,500/350 lbs.	Fits 4" square channel bumpers
19101	3,500/350 lbs.	Fits 2" square channel bumpers





# 5TH WHEEL & GOOSENECK FACTORY EXTENSION

- Routes a 7-way RV blade socket into truck bed while retaining use of 7-way RV blade at rear of vehicle
- Plugs, or T's, into factory harness
- Right angle plug for easy installation



56000



56001

Pkg#	Length	Fits
56000	10 feet	Chevy, Dodge, Ford, Nissan, Toyota
56001	10 feet	Dodge only
56070	7 feet	Chevy, Dodge, Ford, Nissan, Toyota
56071	7 feet	Dodge only



# 5TH WHEEL & GOOSENECK UNIVERSAL EXTENSION

- Routes existing 7-way plug at rear of vehicle into truck bed

Pkg#	Length	Description
56080	7'	Fits any 7-way RV blade socket



56080



# BRAKE CONTROLS

- Quick plug equipped, making installation a snap
- See [curtmfg.com](http://curtmfg.com) for our complete brake control line
- 51130 Reflex is made in the USA



51140



51130



51120



51110

## CURT Brake Controls Quick Reference

Model Name	Pkg#	6-pack Bulk#	Spare Bracket#	Axles				Activation	Display	Mount Angles	Level Adjust	Warranty
				1	2	3	4					
TriFlex	51140	51142	51144	X	X	X	X	Inertia tri-axis accelerometer	Digital	-20° to +70°*	Auto	Limited lifetime
Reflex	51130	51132	--	X	X	X	X	Inertia dual-axis accelerometer	Digital	-20° to +70°*	Auto	Limited lifetime
Discovery	51120	51122	51124	X	X	X	X	Time-based	Digital	Any	Auto	Limited lifetime
Venturer	51110	--	51114	X	X	X	-	Time-based	LED	Any	Auto	Limited lifetime

\* TriFlex and Reflex can be mounted up to 20° off the center line of the vehicle and / or up to 20° off horizontal laterally



Scan for more information

Connect with us!



Online  
[CURTMFG.COM](http://CURTMFG.COM)

Toll-free  
[877.CURTMFG](tel:877.CURTMFG)