

INSTALLATION MANUAL

205790

Level of Difficulty

Easy

Installation difficulty levels are based on time and effort involved and may vary depending on the installer level of expertise, condition of the vehicle and proper tools and equipment.

Parts List

Item	Qty	Description
1	1	Driver / left mounting bracket
2	1	Passenger / right mounting bracket
3	1	Driver / left adjustable mounting bracket
4	1	Passenger / right adjustable mounting bracket
5	6	Hex bolt, 5/8"-11 x 1-3/4"
6	2	Shoulder bolt, 5/8" x 7/8" x 1/2"-13
7	2	Flat washer, 5/8"
8	4	Flat washer, 9/16"
9	4	Belleville washer, .63" x 1.25" x .04" x .042"
10	4	Flange nut, 5/8"-11
11	2	Nylock nut, 5/8"-11
12	2	Nylock nut, 1/2"-13

Tools Required

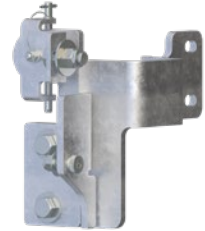
Ratchet	Socket, 15/16"
Torque wrench	Socket, 3/4"
Wrench, 15/16"	Allen wrench, 5/16"
Socket, 18mm	--

Torque Specifications

1/2" bolt	65 ft-lbs.
5/8" bolt	128 ft-lbs.
3/4" bolt	228 ft-lbs.
M10 bolt	55 ft-lbs.

Use above torque setting unless otherwise noted

Product Photo



NOTICE

Visit www.retracmirrors.com for a full-color copy of this instruction manual, as well as helpful videos, guides and much more!

Before you begin installation, read all instructions thoroughly.

Proper tools will improve the quality of installation and reduce the time required.

Periodic inspection of your product should be performed to ensure all hardware and / or components remain secure.

To help prevent damage to the product or vehicle, refer to the specified torque specifications when securing hardware during the installation process.

Maintenance

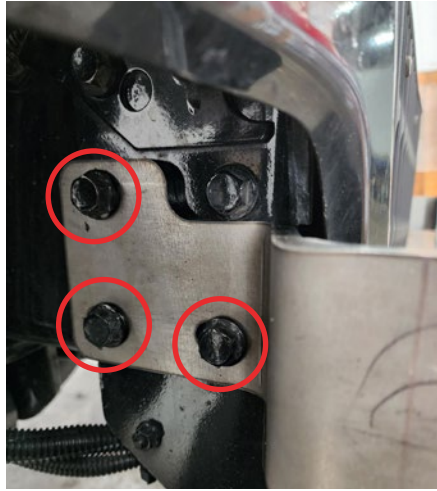
Mild automotive detergent may be used to clean the product. Do not use dish detergent, abrasive cleaners, abrasive pads, wire brushes or other similar products that may damage the finish.

Product Registration and Warranty

RETRAC stands behind our products with industry-leading warranties. To get copies of the product warranties, register your purchase or provide feedback, visit: warranty.curtgroup.com/surveys

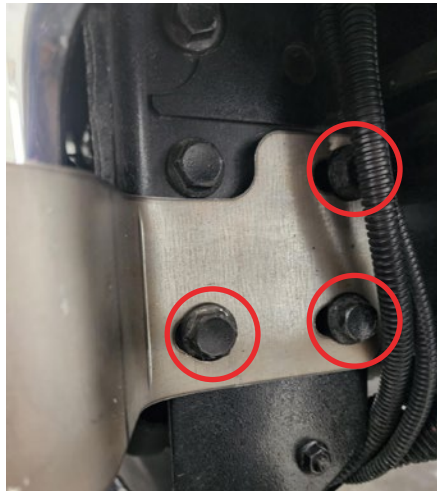
Step 1

Remove the three factory bolts circled in the picture on the passenger side. Install the passenger-side mounting bracket using the factory bolts.



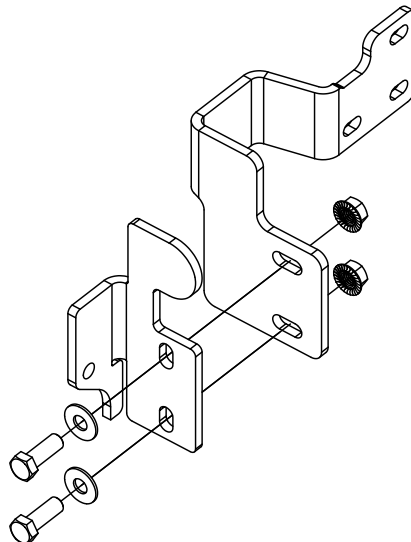
Step 2

Repeat on the driver side using the factory bolts to install the mounting bracket.



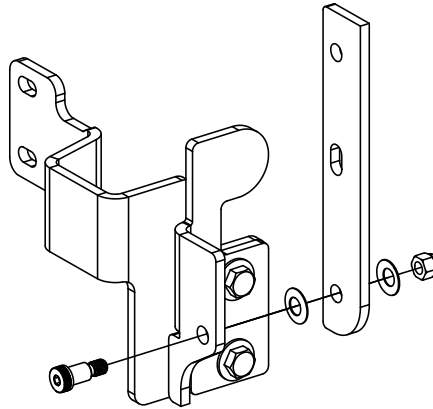
Step 3

Using the 5/8"-11 x 1-3/4" bolts, 9/16" flat washers and 5/8"-11 flange nuts, secure the adjustable mounting brackets to the mounting brackets. Hand tighten the hardware at this time (passenger side shown).



Step 4

Using the 5/16" allen wrench and 3/4" socket, install the guard onto the mounting brackets with the 5/8" x 7/8" shoulder bolts, .63 x 1.25 x .040 x .082 belleville washers (large diameter to the guard bracket face) and 1/2"-13 nylock nuts using the bottom holes (passenger side shown).

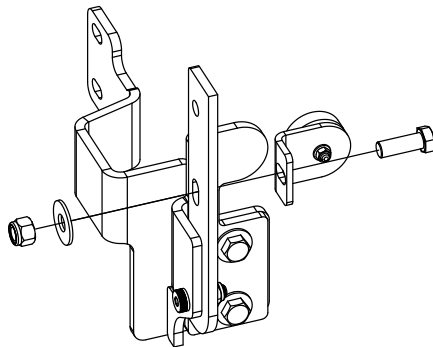


Step 5

Using a 15/16" socket and wrench, secure the magnet bracket assemblies to the mounting bracket of the grille guard with the 5/8"-11 x 1-3/4" bolts, 5/8" flat washer and 5/8"-11 nylock nuts. The safety pin bracket must be on the driver side.

Adjust the adjustable mounting brackets as needed to align the guard on the truck. If front end radar is equipped, center the radar between guard crossbars. Tighten remaining bolts.

Note: Magnets and brackets are pre-assembled and some adjustment may be necessary after the grille guard is installed on the truck.



Step 6

Close the guard and check to make sure the magnets line up correctly. Adjust if needed.

If radar interference occurs, ensure all hardware is tight and/or adjust the guard as needed.

With the grille guard installed, periodic inspections should be performed to ensure all mounting hardware remains tight.

To protect your investment, see the 'Notes and Maintenance' section on page one.

Congratulations on the installation of your new RETRAC grille guard.

