

INSTALLATION INSTRUCTIONS AND PARTS LIST

MODEL: 583098, 583102, 583108, 583114, 583125, 584098, 584102, 584114, 584125 O-MEGA II 6" OVAL
STEPS
UNIVERSAL APPLICATION

1. READ INSTRUCTIONS COMPLETELY AND CHECK TO MAKE SURE THAT ALL REQUIRED PARTS (LISTED ON THE SERVICE PARTS LIST) ARE ON HAND BEFORE STARTING THE INSTALLATION.
2. FOLLOW THE INSTRUCTIONS INCLUDED WITH THE SPECIFIC BRACKET PACKAGE THAT YOU ARE USING, TO MOUNT THE BRACKETS TO YOUR VEHICLE.
3. BEFORE ATTACHING THE O-MEGA STEPS TO THE BRACKETS, PLACE THE STEP PADS (ITEM #2) ON TOP OF THE STEP PLATES. USE THE TABLE ON SHEET #2, AS A GUIDE TO POSITION THE STEP PAD FOR YOUR PARTICULAR VEHICLE. WHEN INSTALLING THE PADS ON THE STEPS, DRILL (5) 1/8" HOLE USING THE STEP PAD AS A GUIDE. ATTACH WITH (5) 8-18X1/2" TEK SCREWS (ITEM #6) PROVIDED. REPEAT FOR ALL STEP PADS. **(NOTE: DUE TO THE SHORTNESS OF SOME BOXES, MOUNT THE BOX STEP PAD FIRST, APPROXIMATELY 1/2" FROM THE END CAP AND THEN MOUNT THE MIDDLE STEP PAD ACCORDINGLY.)**
4. INSTALL THE REQUIRED NUMBER OF SQUARE HEAD BOLTS INTO THE DESIGNATED SLOTS IN THE BOTTOM OF THE STEP PLATES.
5. INSTALL THE END CAPS (ITEM #3) AS SHOWN IN *fig. 1*, TIGHTENING THE NUTS TO 5 LB FT.
6. POSITION THE O-MEGA STEP ON THE MOUNTING BRACKETS SO THAT THE SQUARE HEAD SCREWS (ITEM #4) ARE LOCATED IN THE SLOTS OF THE MOUNTING BRACKETS AND THE STEP IS CENTERED, FRONT TO REAR, ON THE VEHICLE. INSTALL 5/16" SERRATED FLANGE NUTS (ITEM #5) ON THE SQUARE HEAD SCREWS (ITEM #4) AND TIGHTEN TO 19 LB FT.

SERVICE PARTS LIST

ITEM	PART NO.	QTY	DESCRIPTION
1	553074	2	EXTRUSION-AL,95.0,OMEGA STP,SILVEER
1	553075	2	EXTRUSION-AL,99.0,OMEGA STP,SILVER
1	553076	2	EXTRUSION-AL,105.0,OMEGA STP,SILVER
1	553077	2	EXTRUSION-AL,111.0,OMEGA STP,SILVER
1	553078	2	EXTRUSION-AL,122.0,OMEGA STP,SILVER
1	553062	2	EXTRUSION-AL,95.0,OMEGA STP,BLACK
1	553063	2	EXTRUSION-AL,99.0,OMEGA STP,BLACK
1	553065	2	EXTRUSION-AL,111.0,OMEGA STP,BLACK
1	553066	2	EXTRUSION-AL,122.0,OMEGA STP,BLACK
2	107957	6	ALUM,STP-PAD,BLK,OMEGA-STEP
3	107956	4	CAP-END,PLSTC,2.95 X 6.70
4	106880	28	SCREW-SQ HD,5/16-18 X 1,MAGNIGUARD
5	102680	28	NUT-SERR FLG,HX,SST,WX,5/16-18
6	107958	30	SCREW-PPH,TEK,#8-18 X 1/2",SST,BZP



STEP PAD LOCATION GUIDE

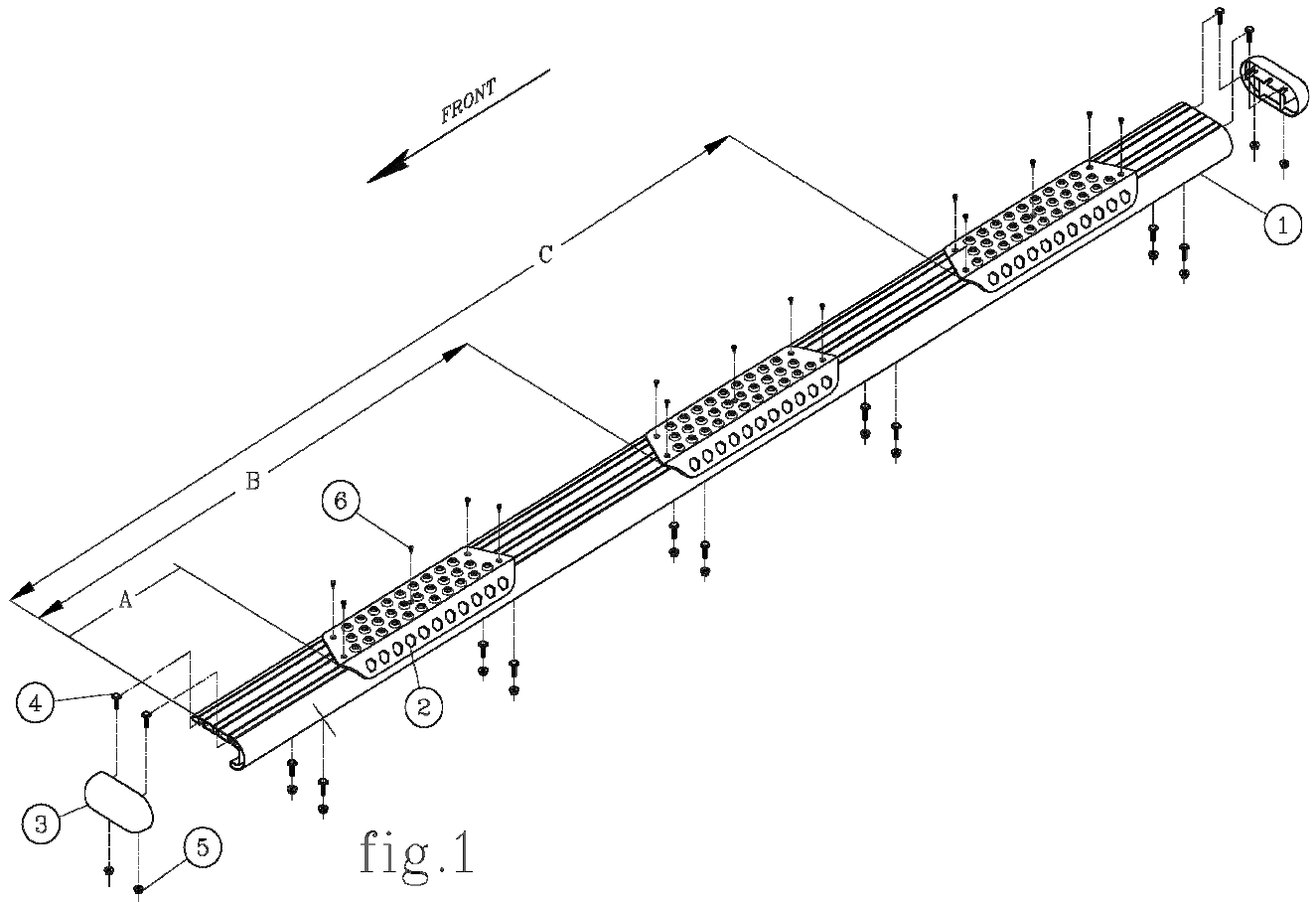


fig.1

VEHICLE MODEL	PAD A	PAD B
SILVERADO/SIERRA DOUBLE CAB	14-3/4	46-3/4
SILVERADO/SIERRA EXTENDED CAB	14-3/4	41-3/4
SILVERADO/SIERRA CREW CAB	14-3/4	54-1/4
CHEVROLET EXPRESS VAN & GMC SAVANA VAN	7-1/2	N/A
RAM QUAD CAB	10-1/2	46
RAM CREW CAB	10-1/2	48
RAM MEGA CAB	10-1/2	52-1/16
FORD F150 SUPER CAB	18-1/4	46-1/4
FORD F150 SUPER CREW CAB	18-1/4	56-1/2
FORD F150 SUPER CREW CAB	18-1/4	56-1/2
FORD SUPER DUTY SUPER CAB	6-7/8	39-1/16
FORD SUPER DUTY CREW CAB	6-7/8	52-7/8
FORD	7-1/2	N/A

NOTE: THE ABOVE PAD LOCATIONS ARE ONLY SUGGESTIONS AND MAY BE PLACED AT THE PURCHASERS DISCRETION.

INSTALLATION INSTRUCTIONS AND PARTS LIST

FOR MOUNTING 401525/571525 GRIP STEPS/MEGA-OMEGA STEPS,
LONG/LONG, 2015-NEWER FORD TRANSIT VANS.

READ INSTRUCTIONS COMPLETELY AND CHECK TO MAKE SURE THAT ALL REQUIRED PARTS
(LISTED ON SERVICE PARTS LIST) ARE ON HAND BEFORE STARTING THE INSTALLATION.

PASSENGER SIDE INSTALLATION

1. MEASURE FROM THE REAR OF THE FRONT FENDER OPENING, AND MARK THE PINCH WELD FOR DRILLING THE FRONT HOLE OF EACH BRACKET AS SHOWN IN FIG. 2. AND THE REAR HOLE OF EACH BRACKET, REAR HOLE DISTANCE IS 3" FROM THE FRONT HOLE ON THE FIRST 4 BRACKETS, AND 1-1/4" ON THE 5TH REAR MOST BRACKET.
2. DRILL 11/32" HOLE IN EACH OF THE LOCATIONS MARKED OUT ON THE PINCHWELD.

NOTE: SLIDE A FLAT PIECE OF METAL SUCH AS A PUTTY KNIFE BETWEEN THE PINCHWELD, AND THE PLASTIC ROCKER MOLDING, TO AVOID DAMAGING MOLDING DURING DRILLING.

3. INSTALL BOLT PLATE RETAINERS (ITEM #4, 5) AND 5/16-18 X 1" CARRIAGE BOLTS (ITEM #6) BETWEEN THE ROCKER MOLDING, AND THE PINCHWELD, WITH CARRIAGE BOLTS GOING THROUGH THE HOLES DRILLED IN THE PINCHWELD.

NOTE: IT MAY BE NECESSARY TO RELEASE THE LOWER CLIPS OF THE ROCKER MOLDING, TO ALLOW IT TO BE PULLED BACK ENOUGH TO GET CARRIAGE BOLTS AND RETAINER PLATES INSTALLED.

4. PLACE BRACKETS (ITEM #1, 2, 3) UP TO ROCKER, AND FASTEN TO THE 5/16-18 X 1" CARRIAGE BOLTS (ITEM #6) THAT YOU'VE ALREADY PUT THROUGH THE PINCHWELD, USING THE 5/16-18 SERRATED FLANGE NUTS (ITEM #7). LEAVE THESE FASTENERS FINGER TIGHT AT THIS TIME. **SEE FIG. 1 FOR PROPER BRACKET LOCATIONS.**
5. IN THE TOP HOLES OF EACH BRACKET DRILL A 17/64" HOLE THROUGH THE SHEET METAL OF THE ROCKER PANEL, AS SHOWN IN FIG. 1.
6. INSTALL THE 5/16-18 X 1" THREAD CUTTING BOLT (ITEM #8), AND THE 5/16" LOCK WASHER (ITEM #9) INTO EACH OF THE 17/64" HOLES THAT WERE DRILLED. TIGHTEN TO 10 LB. FT.

NOTE: DUE NOT TIGHTEN THE 5/16-18 X 1" THREAD CUTTING BOLTS (ITEM #8) TO MORE THAN 10 LB. FT. OF TORQUE. OVER TORQUEING THESE WILL RESULT IN STRIPPING OUT THE ROCKER PANEL.

7. TIGHTEN ALL REMAINING 5/16-18 FASTENERS 19 LB. FT.

DRIVERS SIDE INSTALLATION

1. REPEAT STEPS 1 THROUGH 7. (SEE FIGURES 2, AND 4 FOR MEASUREMENTS AND LOCATIONS.)

NOTE: DUE TO THE THICKNESS OF THE MATERIAL IN THE ROCKER PANEL FOR THE TOP 2 HOLES ON THE SECOND BRACKET BACK ON THE DRIVERS SIDE, YOU WILL NEED TO DRILL THOSE 2 HOLES WITH A 19/64" BIT.

2. ATTACHING THE STEP ASSEMBLY:
PLEASE REVIEW THE INSTALLATION INSTRUCTIONS THAT ARE INCLUDED IN YOUR STEP ASSEMBLY FOR SPECIFIC DETAILS.



1200 E. Birch St.

Brandon, SD 57005

REV A 13APR15
552583 SHEET 1 OF 6 07OCT14

INSTALLATION INSTRUCTIONS AND PARTS LIST

SERVICE PARTS LIST

ITEM	PART NO.	QTY	DESCRIPTION
1	552580	4	MTG-BRKT, FRNT, LH/RH, GRIP STEP
1	552608	4	MTG-BRKT, FRNT, LH/RH, MEGA STEP
2	552581	4	MTG-BRKT, MIDDLE, LH/RH, GRIP STEP
2	552609	4	MTG-BRKT, MIDDLE, LH/RH, MEGA STEP
3	552582	2	MTG-BRKT, REAR, LH/RH, GRIP STEP
3	552610	2	MTG-BRKT, REAR, LH/RH, MEGA STEP
4	552611	8	BOLT-RETAINER PLATE, FRONT, ZP, 401525
5	552612	2	BOLT-RETAINER PLATE, REAR, ZP, 401525
6	108683	20	BLT-CRG, 5/16-18 X 1, SST
7	102680	20	SRRTD FLNG-NUT, 5/16-18, SST
8	109177	20	THRD CTTNG-SCRW, 5/16-18 X 1, ZP
9	100030	20	WASHER-LK, 5/16, ZP
10	552616	1	MTG-BRKT, LH, AC, 401525
10	552617	1	MTG-BRKT, LH, AC, 571525



1200 E. Birch St.

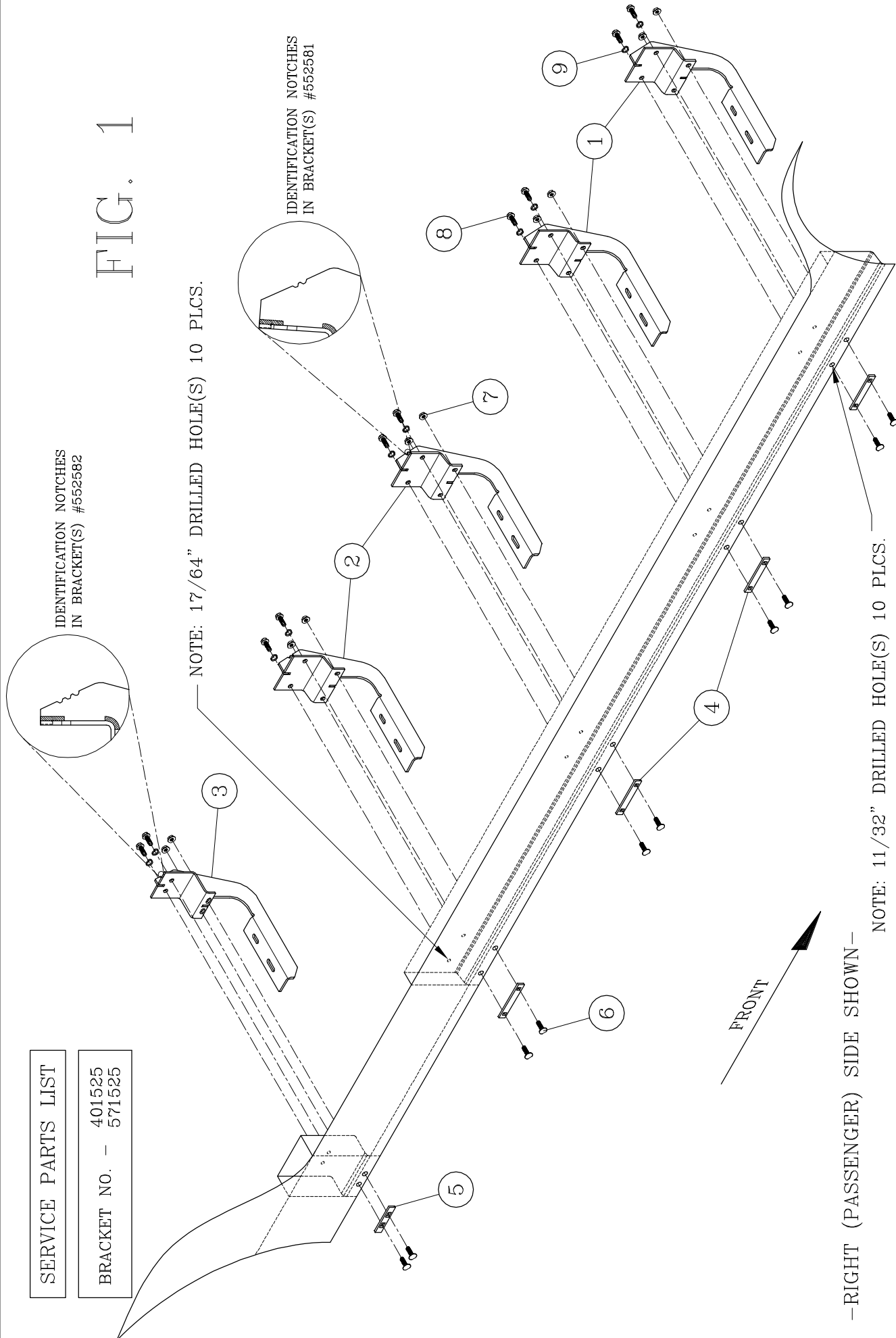
Brandon, SD 57005

REV A 13APR15
552583 SHEET 2 OF 6 07OCT14

SERVICE PARTS LIST

BRACKET NO. - 401525
571525

FIG. 1



-RIGHT (PASSENGER) SIDE SHOWN-

NOTE: 11/32" DRILLED HOLE(S) 10 PLCS.



(A LUVISUS Company)
1200 E. Birch St.
Brandon, MS 37805

FIG. 2

SERVICE PARTS LIST

BRACKET NO. - 401525
571525

IDENTIFICATION NOTCHES
IN BRACKET(S) #552582

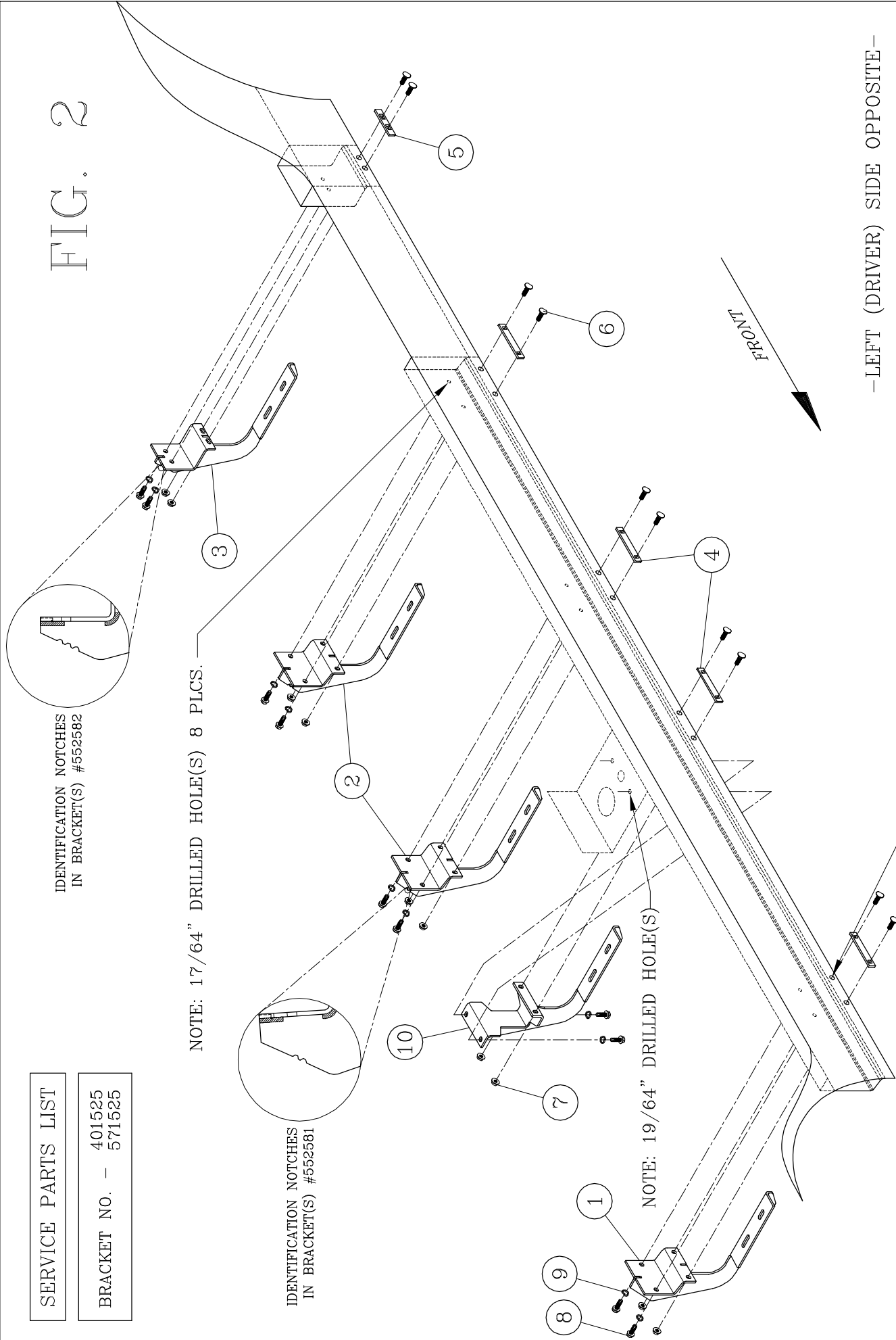
NOTE: 17/64" DRILLED HOLE(S) 8 PLCS.

IDENTIFICATION NOTCHES
IN BRACKET(S) #552581

NOTE: 19/64" DRILLED HOLE(S)

NOTE: 11/32" DRILLED HOLE(S) 10 PLCS.

-LEFT (DRIVER) SIDE OPPOSITE-



1200 E. Birch St.
A Luvorne Company
Brandon, SD 57805

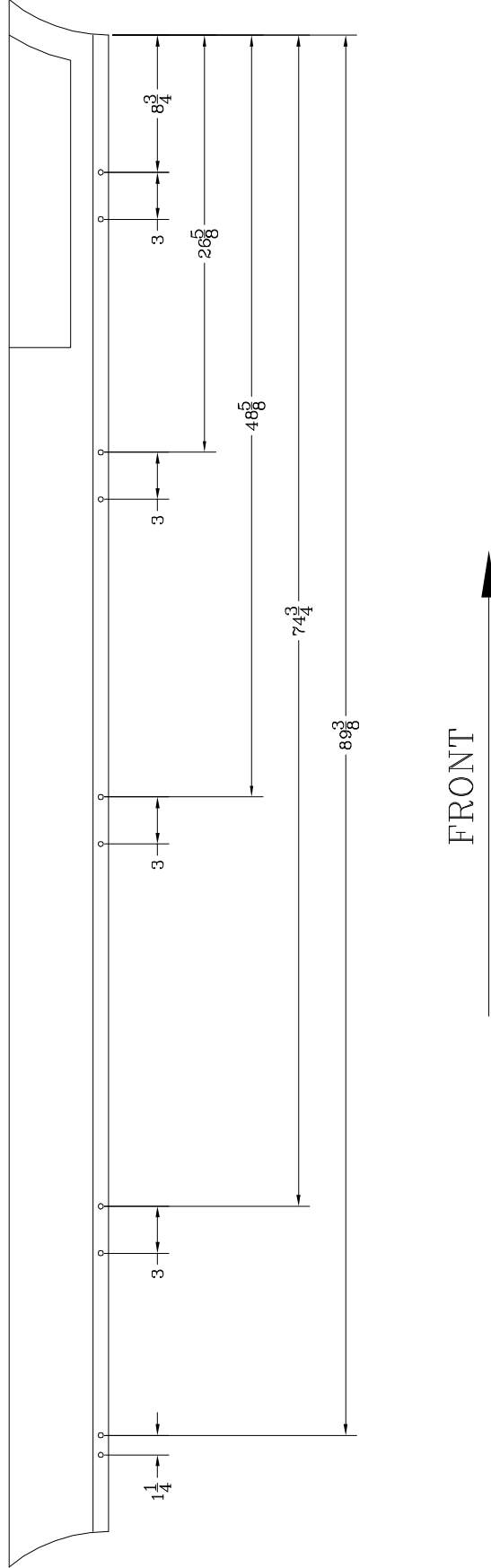
SERVICE PARTS LIST

BRACKET NO. - 401525
571525

FIG. 3

-RIGHT (PASSENGER) SIDE SHOWN-

NOTE:
THESE DIMENSIONS MAY NEED TO BE ADJUSTED FORWARD, OR BACKWARD
TO AVOID DRILLING THROUGH SPOT WELDS IN THE PINCH SEAM.



(A LOVERNE Company)
1288 E. Birch St. Brookton, SD 57005

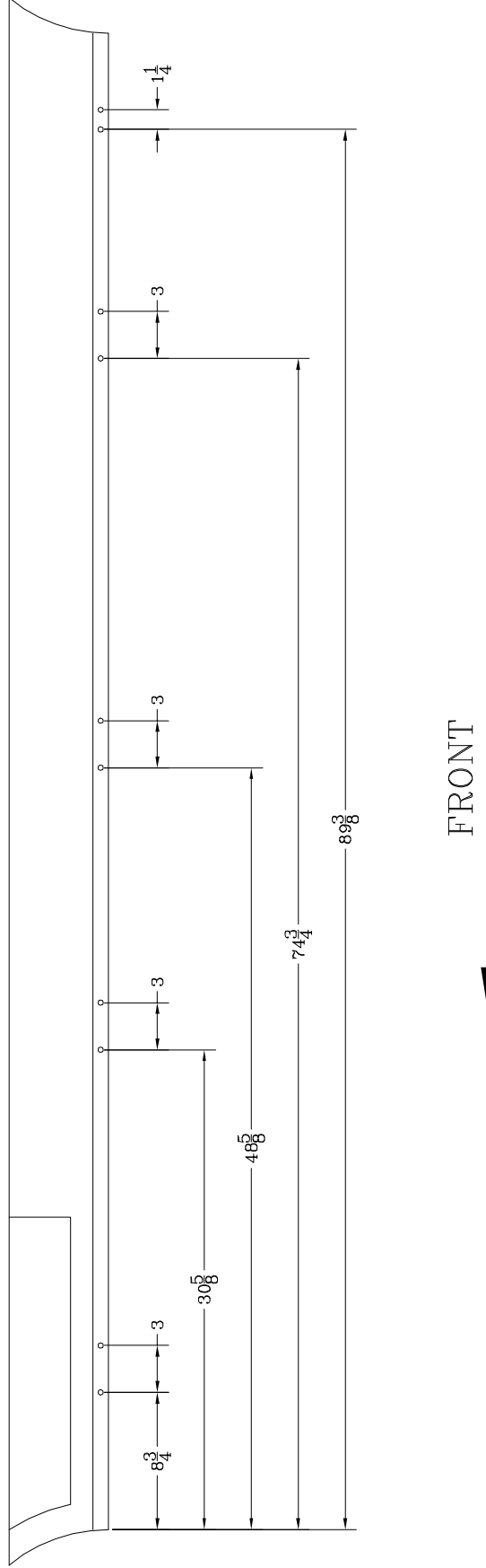
SERVICE PARTS LIST

BRACKET NO. - 401525
571525

FIG. 4

-LEFT (DRIVERS) SIDE SHOWN-

NOTE:
THESE DIMENSIONS MAY NEED TO BE ADJUSTED FORWARD, OR BACKWARD
TO AVOID DRILLING THROUGH SPOT WELDS IN THE PINCH SEAM.



(A LOVERNE Company)
1288 E. Birch St. Brookton, SD 57005