

INSTALLATION MANUAL

4055111

Level of Difficulty

Easy

This is the first of two manuals required to complete this installation. The second manual is included with your running boards / side steps.

Parts List

4	VersaTrac™ mounting bracket, universal
1	VersaTrac™ mounting bracket, driver side, front
1	VersaTrac™ mounting bracket, passenger side, rear
12	Hex bolt, M8 (S)
12	Flat washer, M8 (S)
12	Lock washer, M8 (S)
12	Hex bolt, M8 (B)
12	Flat washer, M8 (B)
12	Lock washer, M8 (B)
12	Hex nut, M8 (B)
6	Hex bolt, M10
6	Flat washer, M10
6	Lock washer, M10
6	Flat washer, M12
6	Lock washer, M12
6	Hex nut, M12
6	T-bolt, M12 tab
6	Plastic bolt retainer
1	Spacer plate

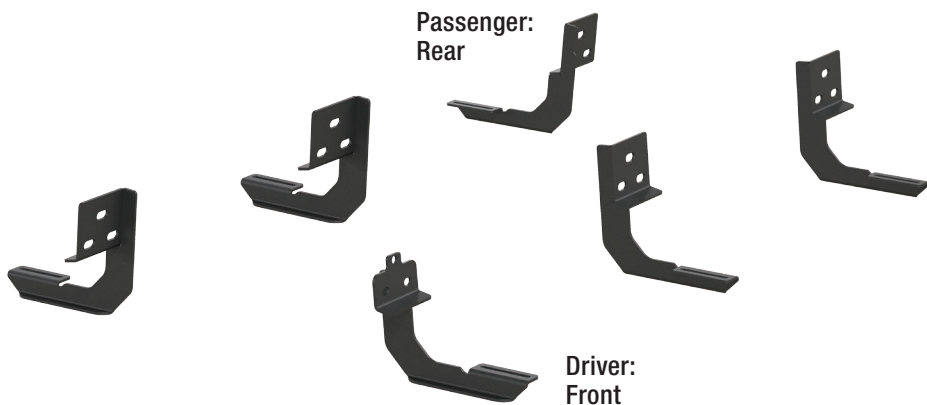
(S) = Silver hardware, (B) = Black hardware

Running boards / side steps sold separately

Tools Required

Ratchet	Socket set
Torque wrench	Level
Utility knife	--

Product Photo



Notes and Maintenance

Before you begin installation, read all instructions thoroughly.

Proper tools will improve the quality of installation and reduce the time required.

Mild automotive detergent may be used to clean the product. Do not use dish detergent, abrasive cleaners, abrasive pads, wire brushes or other similar products that may damage the finish.

Refer to the table below when securing hardware during the installation process to help prevent damage to the product or vehicle.

Torque Specifications

Metric			SAE		
	M6 bolt	3 ft-lbs.		1/4" bolt	3 ft-lbs.
M8 bolt	7 ft-lbs.	5/16" bolt	7 ft-lbs.		
M10 bolt	16 ft-lbs.	3/8" bolt	16 ft-lbs.		
M12 bolt	28 ft-lbs.	7/16" bolt	20 ft-lbs.		
--	--	1/2" bolt	28 ft-lbs.		

Use above torque setting unless otherwise noted

Product Registration

CURT Group stands behind our products with industry leading warranties. You can help us continue to improve our product line and help us understand your needs by registering your purchase by visiting:

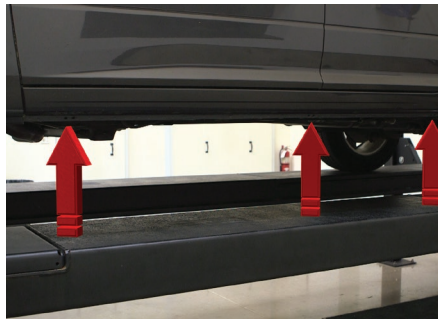
warranty.curtgroup.com/surveys

At CURT Group, customer is king. We value your feedback and we use that information to make improvements on our products. Please, take a minute and let us know how we are doing.

Step 1

Starting on the driver side, locate the three mounting tabs along the bottom edge of the vehicle body.

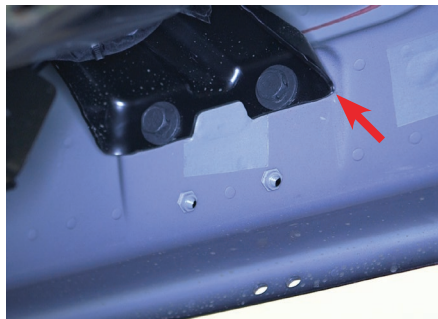
Locate the front mounting point.



Step 2

Using a utility knife, cut and remove the tape plug covering the third mounting point for the front mounting bracket.

Note: If vehicle is 2009 - 2015, there may not be a support bracket (indicated by the red arrow) at this location. In this case, use the provided spacer plate between the driver-side front mounting bracket and the rocker panel.



Step 3

Insert an M12 T-bolt plate into the opening. Slide a plastic bolt retainer over the thread of the bolt to hold the bolt in place.

Place the front driver-side bracket onto the vehicle and secure the top portion with an M12 lock washer, flat washer and hex nut.

Snug the hardware, but do not fully tighten.



Step 4

Finish securing the front mounting bracket to the vehicle by inserting two silver M8 hex bolts, lock washers, and flat washers into the bottom holes of the mounting bracket.

Note: On vehicles not equipped with M8 threaded inserts, align the M10 nut on the M12 T-bolt plate with either hole location on the bracket. Secure using an M10 hex bolt, lock washer and flat washer.



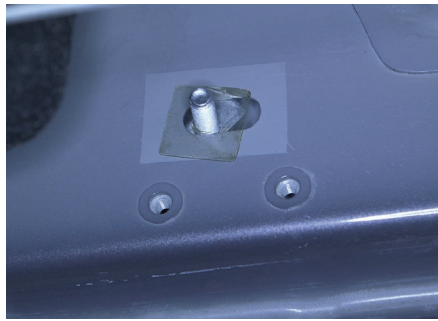
Step 5

Locate the middle mounting location and one of the universal mounting brackets.

Insert an M12 T-bolt plate into the top mounting position. Slide a plastic bolt retainer over the thread of the bolt to hold the bolt in place. Place the mounting bracket over the stud and secure with an M12 flat washer, lock washer and hex nut.

Secure the bottom of the bracket with two silver M8 hex bolts, lock washers and flat washers. Snug the hardware, but do not fully tighten.

Note: On vehicles not equipped with M8 threaded inserts, align the M10 nut on the M12 T-bolt plate with either hole location on the bottom of the bracket. Secure using an M10 hex bolt, lock washer and flat washer.



Step 6

Locate the rear mounting location and repeat step 5 to secure one of the remaining universal brackets to the rear location on the driver side.



Step 7

Repeat step 5 for the front, middle and rear mounting locations on the passenger side.

IMPORTANT: The front and middle locations will use universal brackets. The rear passenger-side bracket is not universal and is identified with a notch cut into the back of the bracket as shown.

Note: To complete the installation, refer to the manual included with your running boards / side steps.

