

# INSTALLATION MANUAL

# 4055102

### Level of Difficulty

Easy

Installation difficulty levels are based on time and effort involved and may vary depending on the installer level of expertise, condition of the vehicle and proper tools and equipment.

**This is the first of two manuals required to complete this installation. The second manual is included with your running boards / side steps.**

### Parts List

6	VersaTrac™ mounting bracket, universal
2	VersaTrac™ mounting bracket, passenger / right, front, upper
2	VersaTrac™ mounting bracket, passenger / right, front, lower
14	Clip nut, M8*
30	Hex bolt, M8 - 1.25 x 25mm (B)
30	Lock washer, M8 (B)
30	Flat washer, M8 (B)
16	Hex nut, M8 (B)
2	Hex bolt, M10 - 1.50 x 30mm (B)
2	Lock washer, M10
2	Flat washer, M10

\* Depending on the year of the vehicle, clip nuts may or may not be needed.

(B) = Black hardware

Running boards / side steps sold separately

### Tools Required

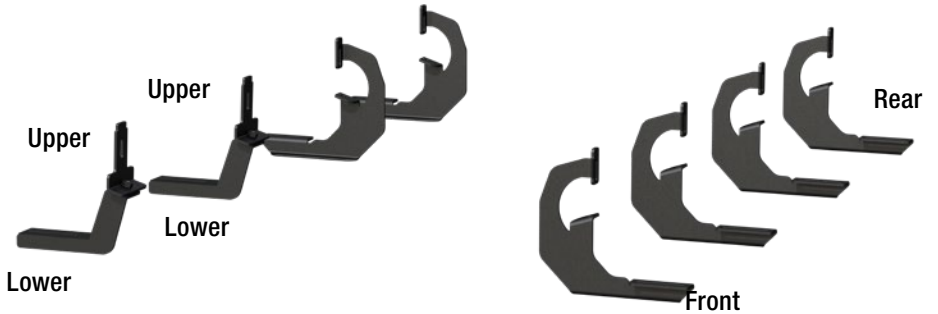
Ratchet	Socket set
Torque wrench	Socket extension
Level	--

### Torque Specifications

Metric	M6 bolt	3 ft-lbs.
	M8 bolt	7 ft-lbs.
	M10 bolt	16 ft-lbs.
	M12 bolt	28 ft-lbs.
SAE	1/4" bolt	3 ft-lbs.
	5/16" bolt	7 ft-lbs.
	3/8" bolt	16 ft-lbs.
	7/16" bolt	20 ft-lbs.
	1/2" bolt	28 ft-lbs.

Use above torque setting unless otherwise noted

### Product Photo



### Notes and Maintenance

Before you begin installation, read all instructions thoroughly.

Proper tools will improve the quality of installation and reduce the time required.

Mild automotive detergent may be used to clean the product. Do not use dish detergent, abrasive cleaners, abrasive pads, wire brushes or other similar products that may damage the finish.

Refer to the table to the left when securing hardware during the installation process to help prevent damage to the product or vehicle.

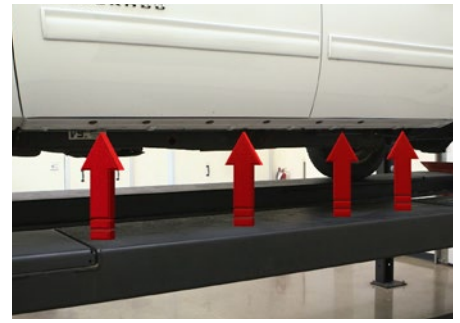
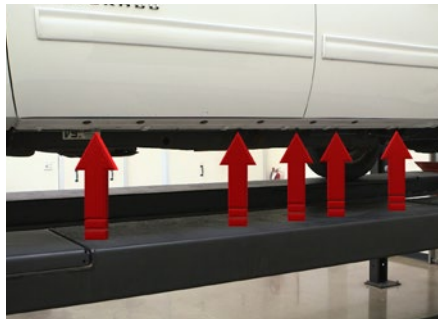
### Product Registration and Warranty

LUVERNE stands behind our products with industry-leading warranties. To get copies of the product warranties, register your purchase or provide feedback, visit: [warranty.curtgroup.com/surveys](http://warranty.curtgroup.com/surveys)

### Step 1

Starting on the driver side, locate the five mounting tabs along the bottom edge of the vehicle body.

This installation will use the first, second, fourth and fifth mounting tabs.



### Step 2

Starting at the front driver-side mounting location, locate the threaded hole on the inside of the body panel.

Attach the bracket to the body panel using an M8 hex bolt, lock washer and flat washer.

Snug the hardware, but do not fully tighten.

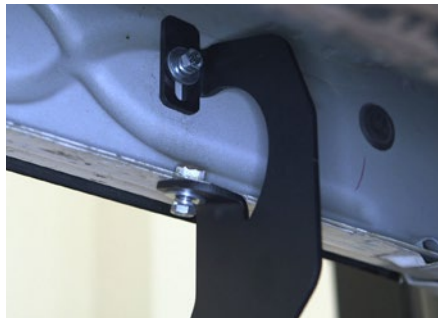


### Step 3

Secure the bracket with a second M8 hex bolt, lock washer and flat washer, using the factory-threaded nut on the edge of the body panel.

Snug the hardware, but do not fully tighten.

Repeat steps 2 and 3 to install the second bracket over the second mounting tab location from step 1.



### Step 4

Locate the fourth and fifth tab locations from step 1.

Insert a clip nut through the access hole and align it over the adjacent smaller hole. Insert a second clip nut over the lower mounting tab.

Secure the bracket to the vehicle with an M8 hex bolt, lock washer and flat washer in each mounting location.

Repeat steps 1 through 4 on the passenger side of the vehicle.



## Step 5

Locate the front mounting point on the passenger side of the vehicle to install the front two passenger mounting brackets.

**Note:** If there is a Def tank you will not be able to insert the M8 hardware on front upper bracket.

Place the upper mounting bracket against the rocker panel. Align the weld nut on the upper mounting bracket with the mounting hole in the rocker panel. Secure the top mounting bracket to the rocker panel using an M8 hex bolt, M8 lock washer and M8 flat washer.

Align one of the passenger front lower mounting brackets with the upper mounting bracket. Secure the two mounting brackets together using an M10 hex bolt, M10 lock washer and M10 flat washer.

Torque all M10 hardware to 31.6 ft-lbs.

Repeat this process to install the second passenger mounting bracket.

Snug the hardware, but do not fully tighten.

**Note:** To complete the installation, refer to the manual included with your running boards / side steps.

