

INSTALLATION MANUAL

400940

This is the first of two manuals required to complete this installation. The second manual is included with your side bars / running boards.

Level of Difficulty

Easy

Parts List

1	Driver / left running board*
1	Passenger / right running board*
4	Mounting bracket, universal
2	Mounting bracket, center
1	W2W mounting bracket, LH
1	W2W mounting bracket, RH
1	W2W support bracket, LH
1	W2W support bracket, RH
18	Flat washer, M8
18	Lock washer, M8
18	Hex nut, M8
4	Flat washer, 3/8", black
4	Hex screw, 3/8" x 7/8", black
4	Hex nut, 3/8", black
2	Stud, 3/16" x 3"
2	Rubber washer, 3/8" x 1-3/4"
6	Flange nut, 3/8"
2	Flat washer, 3/8"
2	Hex nut, 5/8"
2	Lock washer, 5/8"
2	Flat washer, 5/8"
2	Carriage bolt, 5/8"x 1-1/2"

*Running boards sold separately

Tools Required

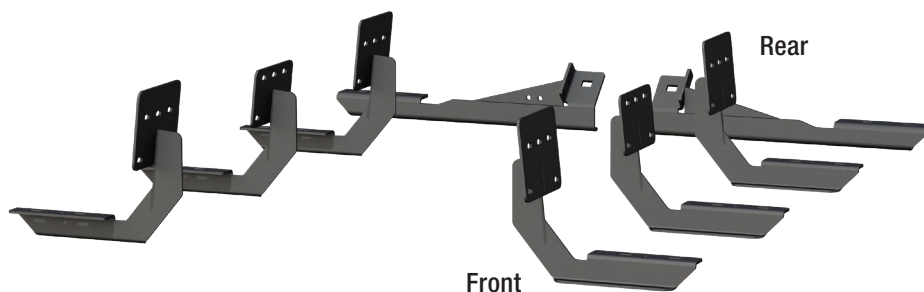
Ratchet	Socket set
Torque wrench	Level

Torque Specifications

3/8 bolt	16 ft-lbs.
5/8 bolt	100 ft-lbs.
M8 bolt	7 ft-lbs.

Use above torque setting unless otherwise noted

Product Photo



NOTICE

Before you begin installation, read all instructions thoroughly.

Proper tools will improve the quality of installation and reduce the time required.

To help prevent damage to the product or vehicle, refer to the specified torque specifications when securing hardware during the installation process.

Maintenance

To protect the product, wax after installing. Regular waxing is recommended to add a protective layer over the finish. Do not use any type of polish or wax that may contain abrasives that could damage the finish.

For polished, gloss and other smooth finishes, polish may be used to clear small scratches and scuffs on the finish.

Mild automotive detergent may be used to clean the product. Do not use dish detergent, abrasive cleaners, abrasive pads, wire brushes or other similar products that may damage the finish.

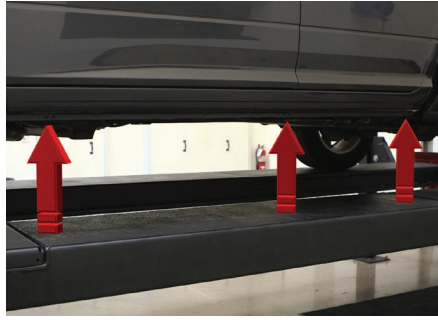
Product Registration and Warranty

CURT Group stands behind our products with industry-leading warranties.

Provide feedback and help us to improve our products by registering your purchase at: warranty.curtgroup.com/surveys

Step 1

Starting on the driver side, locate the three mounting tabs along the bottom edge of the vehicle.



Step 2

Starting at the front mounting location, remove any debris from the factory studs.

Attach a mounting bracket using an M8 flat washer, lock washer and hex nut.

NOTICE

Apply anti-seize to the studs to keep the nuts from seizing up.

Repeat this process for the middle and rear mounting locations.

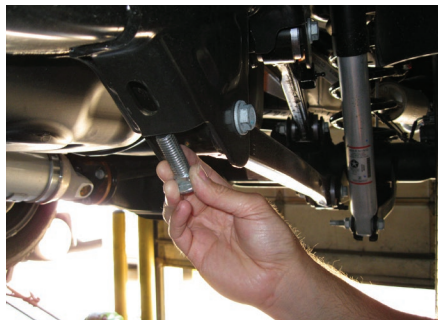
Snug the hardware, but do not fully tighten.



Step 3

At the rear mounting location, insert the 5/8" carriage bolt from the inside of the frame and secure the W2W bracket using the 5/8" hardware.

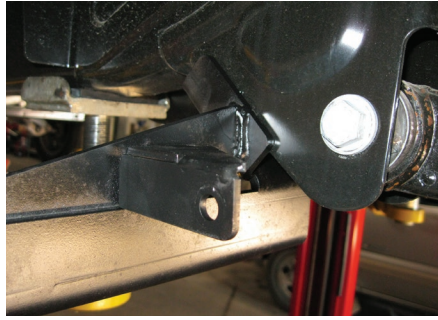
Snug the hardware, but do not fully tighten.



Step 4

At the rear mounting location, secure the W2W support bracket to the W2W bracket using the black 3/8" hardware.

Tighten hardware.

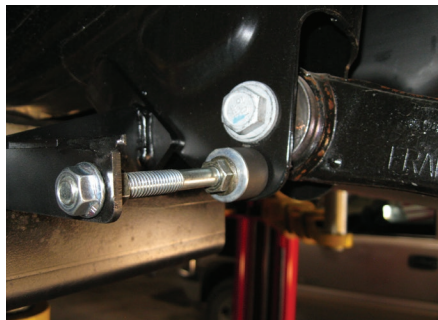
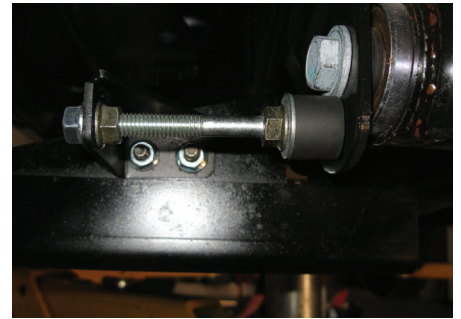
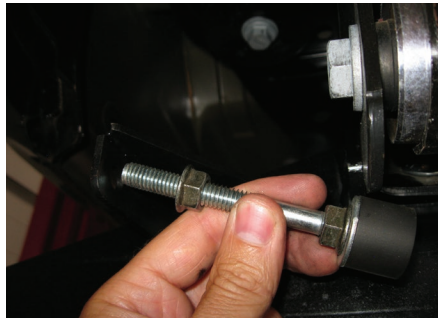


Step 5

Assemble the load reaction stud and secure to the W2W support bracket as shown.

NOTICE

Once the running boards / side steps have been secured and the 5/8" hardware from Step 4 has been tightened, adjust the load reaction stud so that it is pressed firmly against the frame of the vehicle. Do not over tighten as this may create squeaking and rattles.



Step 6

Repeat Steps 3 through 5 on the passenger side of the vehicle.

NOTICE

To complete the installation, refer to the manual included with your running boards / side steps.