

Level of Difficulty

Moderate

Installation difficulty levels are based on time and effort involved and may vary depending on the installer level of expertise, condition of the vehicle and proper tools and equipment.

Parts List

Qty	Description
1	Grille guard*
1	2015-2017 Driver / left upper mounting bracket
1	2015-2017 Passenger / right upper mounting bracket
1	2018-2020 Driver / left upper mounting bracket
1	2018-2020 Passenger / right upper mounting bracket
1	2021-Current Driver / left upper mounting bracket
1	2021-Current Passenger / right upper mounting bracket
2	Double nut plate, M12 - 1.75mm
4	Hex bolt, M12 - 1.75mm x 35mm
4	Lock washer, M12
4	Flat washer, M12 x 32mm OD x 3mm
4	Hex bolt, M10 - 1.5mm x 30mm
8	Flat washer, M10 x 24mm OD x 2.2mm
4	Nylock nut, M10 - 1.5mm
2	Hex bolt, M8 - 1.25mm x 40mm
2	Hex bolt, M8 - 1.25mm x 30mm
6	Flat washer, M8 x 22mm OD x 2mm
2	Lock washer, M8
2	Nylock nut, M8 - 1.25mm

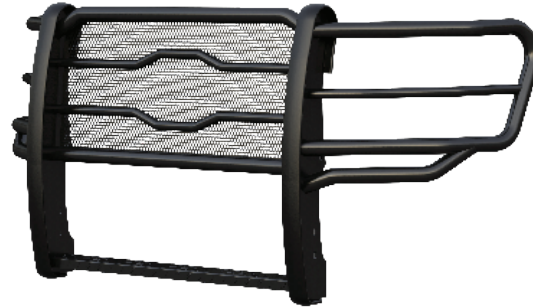
* Grille guard sold separately

Torque Specifications

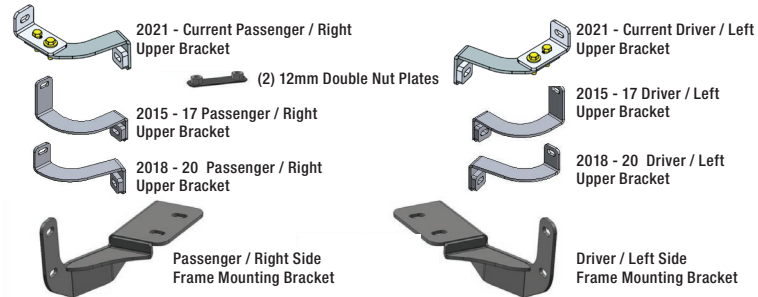
M8 bolt	22 ft.-lbs.
M10 bolt	42 ft.-lbs.
M12 bolt	74 ft.-lbs.
M16 bolt	150 ft.-lbs.
7/16" bolt	30 ft.-lbs.
1/2" bolt	40 ft.-lbs.

Use above torque setting unless otherwise noted

Product Photo



Brackets and Hardware



NOTICE

Visit www.luvernetruck.com for a full-color copy of this instruction manual, as well as helpful videos, guides and much more!

Before you begin installation, read all instructions thoroughly.

Proper tools will improve the quality of installation and reduce the time required.

Periodic inspection of your product should be performed to ensure all hardware and / or components remain secure.

To help prevent damage to the product or vehicle, refer to the specified torque specifications when securing hardware during the installation process.

Maintenance

Mild automotive detergent may be used to clean the product. Do not use dish detergent, abrasive cleaners, abrasive pads, wire brushes or other similar products that may damage the finish.

Product Registration and Warranty

LUVERNE stands behind our products with industry-leading warranties. To get copies of the product warranties, register your purchase or provide feedback, visit: warranty.curtgroup.com/surveys

Tools Required

Ratchet	Torque wrench	Socket set	Socket extensions
---------	---------------	------------	-------------------

Step 1

Remove the front bumper by removing the two nuts on the front of the vehicle, near the tow hooks and one nut on the back side of the bumper.

Repeat on the other side of the vehicle.



Step 2

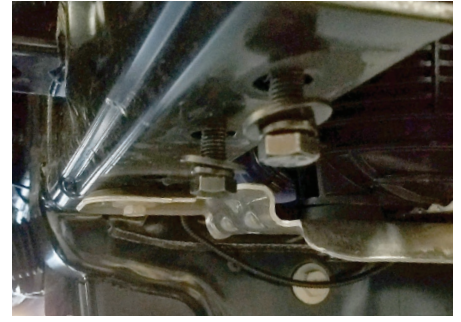
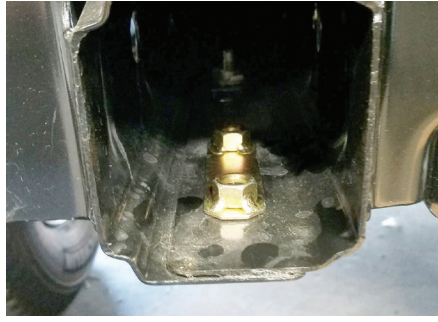
With the bumper removed, remove the tow hook cover and tow hook from each side of the vehicle.



Step 3

Install the nut plate in the frame with the M12 hex bolts, lock washers and flat washers.

Snug the hardware, but do not fully tighten.



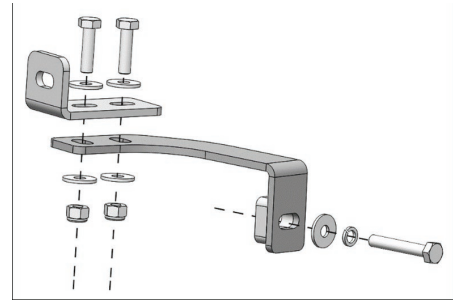
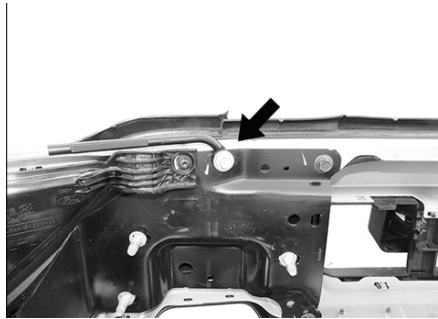
Step 4

Remove the hex bolt from the bumper support on the back of the bumper. Slightly loosen but do not remove the outer bolt on the driver-side end of the support.

Slide the driver/left side top Bracket between the support and the back of the bumper. Secure the top support bracket to the top bracket with two (2) M8 x 30mm hex bolts, four (4) M8 flat washers, and two (2) M8 lock nuts.

Connect the top bracket to the support bracket and bumper with the one (1) M8 x 50mm hex bolt, one (1) M8 lock washer, and one (1) M8 flat washer. With the bracket mounting plate straight up and down, fully tighten the 50mm hex bolt.

Repeat to install the passenger/right side top bracket and top support bracket.



Step 5

With the bracket installed on the back of the bumper, reinstall the bumper to the truck using the factory nuts you removed in step 1.

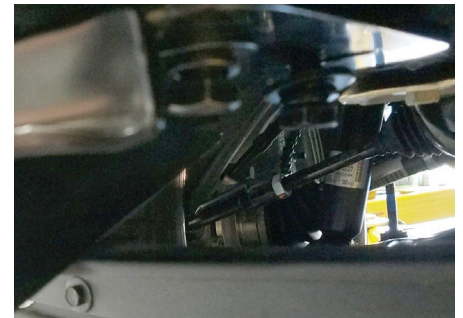


Step 6

Carefully remove the bolts on the bottom of the frame and install the bottom mounting bracket through the tow hook opening below the frame.

Snug the hardware, but do not fully tighten.

Note: A long screw driver or magnet on a rod can be used to adjust the nut plate.



Step 7

With the brackets installed, lift the guard (with assistance) into place and install one M8 x 30mm hex bolt, two M8 flat washers and one M8 nylock nut into the top bracket.

Install four M10 x 30mm hex bolts, eight M10 flat washers and four M10 nylock nuts on the lower bracket.



Step 8

Once properly adjusted, fully tighten the four M12 hex bolts securing the frame brackets to the bottom of the frame and / or tow hook. Tighten the bolts securing the guard onto the bottom bracket, followed by the top bracket bolts.



Step 9

With the grilled guard installed, periodic inspections should be performed to ensure all mounting hardware remains tight.

To protect your investment, see the 'Notes and Maintenance' section on page one.

Congratulations on the installation of your new LUVERNE Prowler Max™ Grille Guard.

