

INSTALLATION INSTRUCTIONS

FOR MOUNTING

LUVERNE BULL BARS WITH THE FOLLOWING MODEL NOS.:

300220, 300260, 300320, 300360 – BULL BAR ASSEMBLY

300551 – BRACKET PACKAGE

2005-2011 TOYOTA TACOMA



1. READ THE INSTRUCTIONS COMPLETELY AND CHECK TO MAKE SURE THAT ALL OF THE REQUIRED PARTS ARE ON HAND BEFORE STARTING THE INSTALLATION. THE CARTONS SHOULD CONTAIN:
 - (1) BULL BAR
 - (1) BRACKET PACKAGE:
 - (1) MOUNTING BRACKET, LH
 - (1) MOUNTING BRACKET, RH
 - (1) FASTENER PACKAGE
2. LOCATE AND REMOVE THE (2) FACTORY NUTS ON THE OUTSIDE EDGE OF THE BUMPER MOUNTING BLOCK AS SHOWN **FIG 1**.
3. PLACE MOUNTING BRACKET (ITEM #3) OVER STUDS AND REPLACE (FACTORY) NUTS, LEAVE FINGER TIGHT.
4. FROM BEHIND THE FRAME, SLIDE BOLT AND WASHER (ITEMS #5&6) THROUGH HOLE IN FRAME THROUGH TO THE BIGGER ROUND HOLE ON FRONT OF FRAME AND PLACE SPACER-PLATE (ITEM #4) BETWEEN FRAME AND BRACKET. THEN ATTACH NUT (ITEM #9) AND HAND TIGHTEN ALL FASTENERS. AS SHOWN **FIG 1**.
5. REPEAT STEPS 1-4 ON THE LEFT HAND SIDE WITH BRACKET (ITEM #2).

NOTE: BASED ON YOUR STATE AND LOCAL LAWS, DETERMINE IF YOU NEED TO RELOCATE YOUR LICENSE PLATE PRIOR TO STEP #6. REMOVE/RELOCATE/INSTALL YOUR LICENSE PLATE BRACKET AND LICENSE PLATE BEFORE MOUNTING THE BULL BAR TO YOUR VEHICLE (SEE FIG 1).



(A LUVARNE Company)

1200 E. Birch St.

Brandon, SD 57005

REVA 20JAN16
305038 SHEET 1 OF 3 07MAR11

6. INSTALL THE BULL BAR TO THE MOUNTING BRACKETS. THE WELDED TABS ON THE BULL BAR FIT ON THE INBOARD SIDE OF THE MOUNTING BRACKETS. FASTEN WITH THE 3/8-16 X 1-1/4 BOLTS (ITEM #7), 3/8" FLAT WASHERS (ITEM #10) (ONE ON THE BOLT SIDE, ONE ON THE NUT SIDE OF THE BRACKET), AND 3/8-16 SERRATED FLANGE NUTS (ITEM #8). ADJUST THE BULL BAR IN AND OUT AND UP AND DOWN AS NEEDED, THEN TIGHTEN THE FASTENERS.
7. TORQUE FACTORY NUTS TO FACTORY SPECS.

SERVICE PARTS LIST

ITEM	PART NO.	QTY	DESCRIPTION
1	300220	1	BULL BAR, 4" BOT MNT, SST,W/O SKD PL
1	300260	1	BULL BAR, 4" BOT MNT, BLK,W/O SKD PL
1	300320	1	BULL BAR, 3" BOT MNT, SST,W/O SKD PL
1	300360	1	BULL BAR, 3" BOT MNT, BLK,W/O SKD PL
2	305036	1	MOUNTING BRACKET, LH
3	305037	1	MOUNTING BRACKET, RH
4	305040	2	SPACER PLT,.25 X 3.78 X 2.41,BLK
5	103773	2	SCR-HEX HD,7/16-14 X 4.00,ZP
6	100081	2	FLAT WASHER, 7/16", ZP
7	100047	4	SCR-HEX HD,3/8-16 X 1.1/4, ZP
8	100181	4	NUT-SERR FLG,3/8-16, ZP
9	103737	2	NUT-SERR FLG,7/16-14,ZP
10	100062	8	WASHER-FL,3/8", ZP
11	108023	4	HEX HEAD SCREW, SELF TAP, 1/4-20, ZP
12	100170	4	NUT, PLASTIC, SQUARE, 1/4", WHITE



(A LIVERNE Company)

1200 E. Birch St.

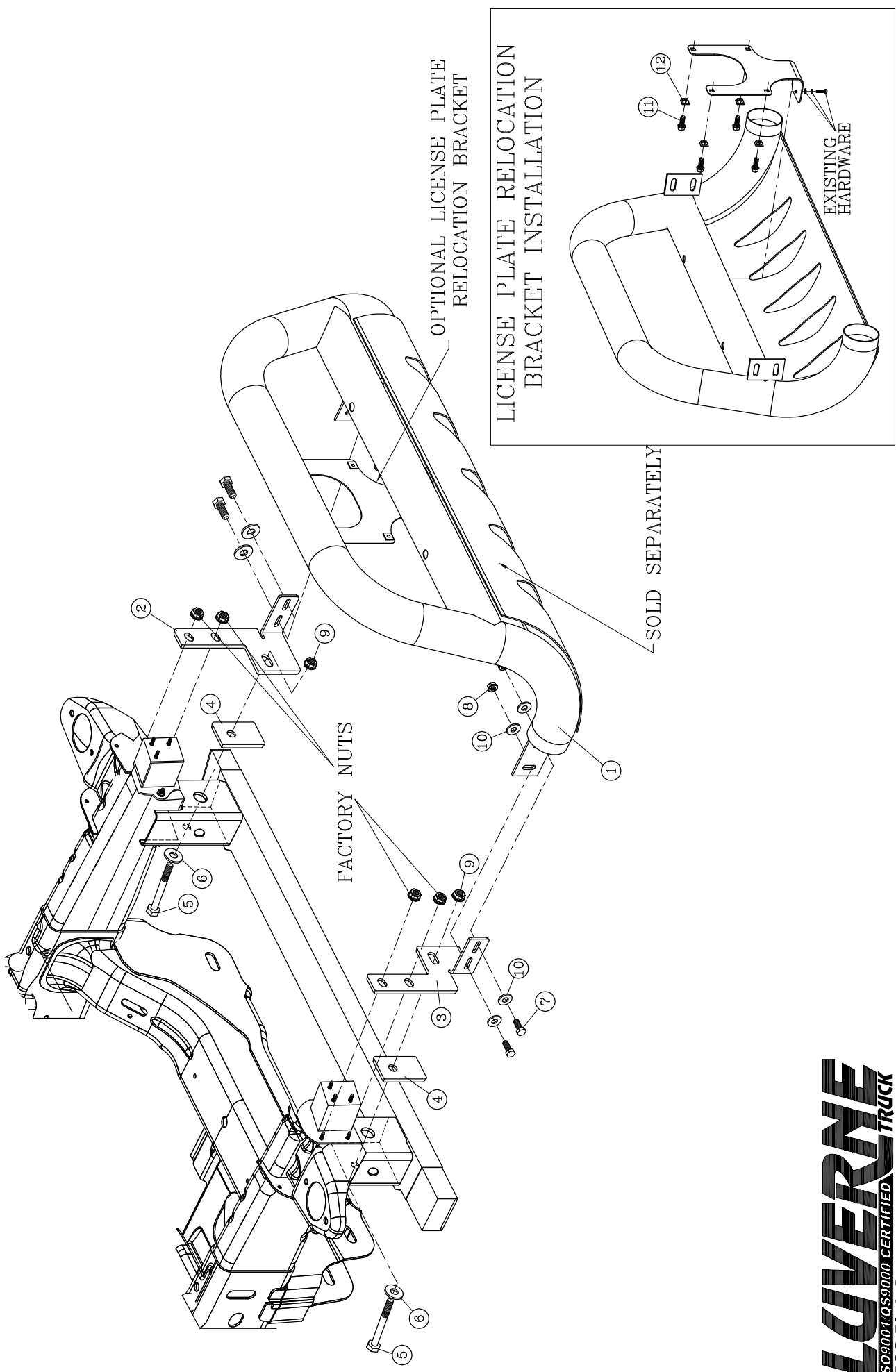
Brandon, SD 57005

REVA 20JAN16
305038 SHEET 2 OF 3 07MAR11

SERVICE PARTS LIST

MODEL NO. - 300551

fig. 1



LOWVERNE
ISO9001 QS9000 CERTIFIED TRUCK
EQUIPMENT
INC.
1200 Birch Street
Brandon, SD 57005