

# INSTALLATION INSTRUCTIONS AND PARTS LIST

VEHICLE APPLICATION:

**MODEL 251034 (22.00" X 23.00") MUDGUARD**

2010 AND NEWER DODGE RAM 2500/3500 DUAL WHEEL TRUCKS

1. READ INSTRUCTIONS COMPLETELY AND CHECK TO MAKE SURE THAT ALL REQUIRED PARTS (LISTED ON SERVICE PARTS LIST) ARE ON HAND BEFORE STARTING THE INSTALLATION.
2. PEEL AWAY THE VINYL COVERING AND CLEAN THE STAINLESS STEEL MUD GUARD INSERTS TO REMOVE ANY VINYL COVERING RESIDUE. (A GOOD GLASS CLEANER IS SUGGESTED).
3. INSTALL THE MUD GUARDS AS FOLLOWS: (SEE SHEET #2)
  - 3.1 REMOVE THE FACTORY WHEEL WELL RETAINING SCREWS FROM THE WHEEL WELL FLANGE, CUT AN 8" SLIT IN THE CORNER OF THE WHEEL WELL LINER FOR THE MUD GUARD TO SLIDE INTO PLACE AS SHOWN IN (FIG 1). POSITION THE MUD GUARD AGAINST THE WHEEL WELL FLANGE AND REPLACE THE FACTORY RETAINING SCREWS WITH (ITEM #3) SEMS SCREW M4.8 X 25MM. MOVE MUD GUARD IN OR OUT AS DESIRED, LEVEL THE MUD GUARD AND TIGHTEN SEM SCREWS.
  - 3.2 USING THE TOP HOLE OPPOSITE OF THE TOP HOLE IN WHEEL WELL FLANGE AS A PILOT DRILL A ¼" DIA. HOLE THRU THE PLASTIC WHEEL WELL LINER AND FASTEN WITH (ITEMS # 2, 4 AND 5) #10-24 BUTTON HEAD SCREW , WASHERS AND NUT AS SHOWN.
  - 3.3 PLACE BRACKET (ITEM #7) UP AGAINST BOX STIFFENER AS SHOWN IN (FIG 1) USING THE HOLE IN BRACKET TO DRILL A 3/16" PILOT HOLE INTO STIFFENER AND SCREW IN A ¼" X ¾" THREAD FORMING SCREW (ITEM #6). AS SHOWN.
  - 3.4 PRESS BOTTOM OF BRACKET TOWARDS THE MUD GUARD AND DRILL A ¼" PILOT HOLE USING THE HOLE IN BRACKET THRU WHEEL WELL PLASTIC LINER. FASTEN MUD GUARD AND PLASTIC LINER TO SUPPORT BRACKET WITH #10-24 UNC BUTTON HD SCREW, WASHERS AND NUT. (ITEMS # 2, 4 AND 5). TIGHTEN ALL FASTENERS.

SERVICE PARTS LIST

DODGE RAM  
 2010 2500/3500 HD DUAL WHEEL PICKUPS  
 MODEL: 251034 MUDGUARD

ITEM	PART NO.	QTY	DESCRIPTION
1	550230	2	SPLASH GUARD- MOLDED, 20.25" X 23.00", DDG, RH/LH
2	105511	12	WASHER- FLAT, SST, .203 X .625 X .062
3	106638	4	SCREW-SEMS, HEX HD,TYPE B,M4.8 X 25mm,BZP
4	106639	4	SCR-BTN HD SOC,#10-24UNC X 1.00"
5	104261	4	NUT- HEX, SERRATED FLANGE,SST,#10-24
6	102694	2	SCR-HEX WSHR HD,TF,AB,SST,1/4 X 3/4
7	550227	2	BRKT-MTG, 14.00 X 1.50,STEEL,(GALV)

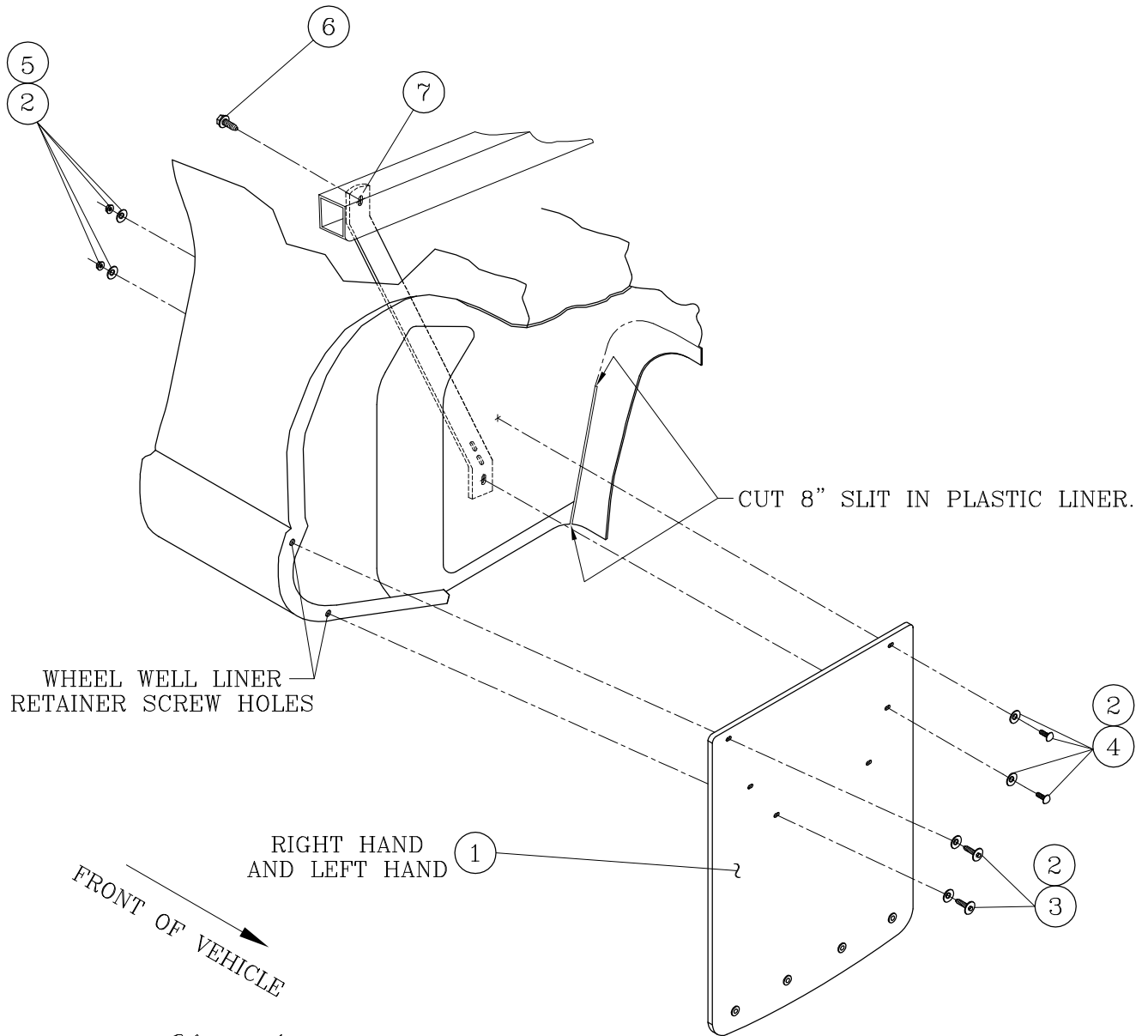


fig.1

RIGHT SIDE SHOWN