

Level of Difficulty

Moderate

Installation difficulty levels are based on time and effort involved and may vary depending on the installer level of expertise, condition of the vehicle and proper tools and equipment.

Parts List

Qty	Description
1	Ring Assembly
1	Mounting Bracket, driver side
1	Mounting Bracket, passenger side
6	Hex bolt, M12
6	Hex nut, M12
12	Flat washer, M12
6	Lock washer, M12
4	Hex bolt, M10
4	Flat washer, M10
4	Lock washer, M10

Tools Required

Socket Wrench	Socket Extension, Short
Socket, 8mm	Wrench, 18mm
Socket, 10mm	Torx Driver, T-30
Socket, 18mm	Utility Knife
Socket, Short Well, 15mm	Panel trim removal tools
Socket, Deep Well, 15mm	--

Torque Specifications

M6 bolt	8 ft-lbs.
M12 bolt	70 ft-lbs.

Use above torque setting unless otherwise noted

Product Photo



NOTICE

Visit www.luvernetruck.com for a full-color copy of this instruction manual, as well as helpful videos, guides and much more!

Before you begin installation, read all instructions thoroughly.

Proper tools will improve the quality of installation and reduce the time required.

Periodic inspection of your product should be performed to ensure all hardware and / or components remain secure.

To help prevent damage to the product or vehicle, refer to the specified torque specifications when securing hardware during the installation process.

Maintenance

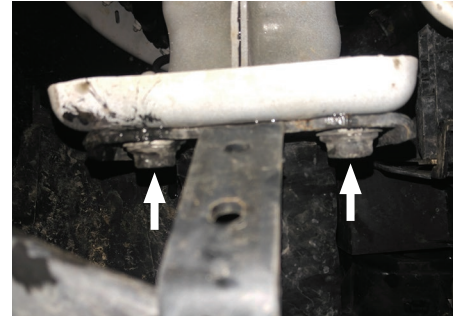
Mild automotive detergent may be used to clean the product. Do not use dish detergent, abrasive cleaners, abrasive pads, wire brushes or other similar products that may damage the finish.

Product Registration and Warranty

LUVERNE stands behind our products with industry-leading warranties. To get copies of the product warranties, register your purchase or provide feedback, visit: warranty.curtgroup.com/surveys

Step 1

On the driver side of the vehicle, locate and remove the two lower bumper mounting bolts. Attach the driver-side mounting bracket reusing the factory hardware.



Step 2

On the passenger side of the vehicle, locate and remove the three 8mm bolts securing the plastic under-tray. Pull the under-tray down and out of the way.

Repeat step 1 to install the passenger-side mounting bracket.



Step 3

Secure the grille guard to the lower mounting brackets using the supplied M12 hardware.

Tighten all grille guard mounting hardware.



Step 4

Mark the plastic under-tray from step 2 where it contacts the mounting bracket and use a utility knife or other cutting tool to cut a slot in the under-tray.

Reattach the under-tray using the hardware removed in step 2.

Step 5

Congratulations on the installation of your new LUVERNE SolidShield™ grille guard.

With the grille guard installed, periodic inspections should be performed to ensure all mounting hardware remains tight.

To protect your investment, see the 'notes and maintenance' section on page one.

