

Level of Difficulty

Moderate

Installation difficulty levels are based on time and effort involved and may vary depending on the installer level of expertise, condition of the vehicle and proper tools and equipment.

Parts List

Qty	Description
1	Grill Guard
1	Driver/Left Frame Mounting Bracket
1	Passenger/Right Frame Mounting Bracket
1	Driver/Left Center Bracket
1	Passenger/Right Center Bracket
2	Tall Tube Spacers (Center Bracket), 3/4" OD x 3/8"
2	Tall tube spacers (Frame Bracket), 12mm x 16mm
6	Button Head Bolts, M12 x 35
12	Flat Washer, M12
6	Lock Washer, M12
6	Hex Nut, M12
2	Hex Bolts, M10 x 45
2	Button Head Bolts, M10 x 30
8	Flat washer, M10
2	Locker Washer, M10
2	Hex Nut, M10
2	Nylock Nut, M10
2	Hex Bolt, M8 x 40
2	Flat Washer, M8
2	Lock Washer, M8
2	Button Head Bolts, M6 x 20
2	Flat Washer, M6
2	Combo Bolts, M6 x 20
1	Hex Wrench, 8mm
1	Hex Wrench, 6mm
1	Hex Wrench, 4mm

Tools Required

Socket wrench	Drill
Socket, 13mm	Wrench, 13mm
Socket, 17mm	Wrench, 17mm
Socket, 19mm	Wrench, 19mm
Socket extensions	Torx socket, T-30
Drill bit, 1/8"	Safety glasses
Drill bit, 1/2"	--

Product Photo



NOTICE

Visit www.luvernetruck.com for a full-color copy of this instruction manual, as well as helpful videos, guides and much more!

Before you begin installation, read all instructions thoroughly.

Proper tools will improve the quality of installation and reduce the time required.

Periodic inspection of your product should be performed to ensure all hardware and / or components remain secure.

To help prevent damage to the product or vehicle, refer to the specified torque specifications when securing hardware during the installation process.

Maintenance

Mild automotive detergent may be used to clean the product. Do not use dish detergent, abrasive cleaners, abrasive pads, wire brushes or other similar products that may damage the finish.

Product Registration and Warranty

LUVERNE stands behind our products with industry-leading warranties. To get copies of the product warranties, register your purchase or provide feedback, visit: warranty.curtgroup.com/surveys

Torque Specifications

M6 bolt	7 ft-lbs.
M8 bolt	16 ft-lbs.
M10 bolt	35 ft-lbs.
M12 bolt	60 ft-lbs.

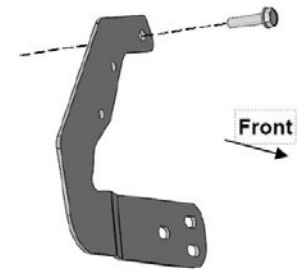
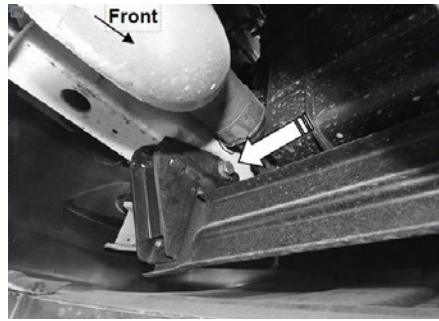
Use above torque setting unless otherwise noted

Step 1

On the driver side of the vehicle, locate and remove the factory bolt on the side of the frame rail. Secure the driver-side frame bracket to the vehicle, reusing the factory bolt. Leave the hardware loose at this time.

Repeat on the passenger side of the vehicle.

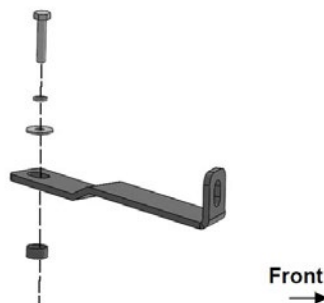
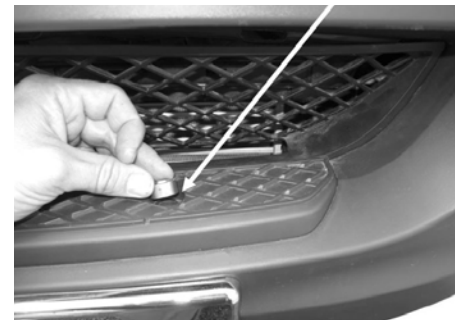
Note: On diesel vans these bolts cannot be fully removed due to interference with the intercooler and intercooler hoses. They can be backed out just enough however to slide the bracket over the bolt.



Step 2

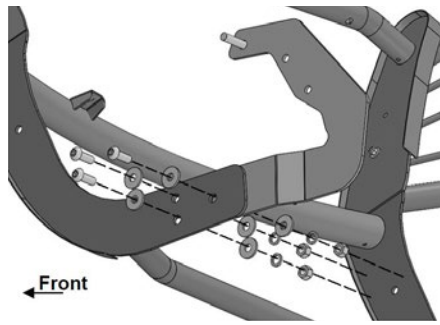
Remove the two Torx bolts in the bottom of the opening in the front bumper step area. Place a 3/4" tube spacer (the larger and shorter spacers) into the recesses in the bumper cover. Position the driver-side center bracket over the spacer and secure using an M8 x 40 button head bolt, M8 lock washer and M8 flat washer. Leave the hardware loose at this time.

Repeat for the passenger-side bracket.



Step 3

With assistance, position the grille guard up to the outside of the frame mounting brackets. Line up the rear-most holes in the mounting brackets with the grille guard and secure using an M12 x 30 button head bolt, M12 lock washer, two M12 flat washers and an M12 hex nut. Rotate the guard up into position and install the M12 hardware in the remaining holes. Leave the hardware loose at this time.



Step 4

Secure the driver-side center bracket to the grille guard using an M10 x 30 button head bolt, two M10 flat washers and an M10 nylock nut. Leave the hardware loose at this time.

Repeat on the passenger side of the vehicle.



Step 5

Align the grille guard and tighten all hardware.

Step 6

Use the frame mounting brackets as a templating location to mark the drilling location on the bottom of the frame channel.

NOTICE

For 2WD models, use the upper hole.
For 4WD models, use the lower hole.



Step 7

Remove the grille guard and frame brackets from the vehicle.

NOTICE

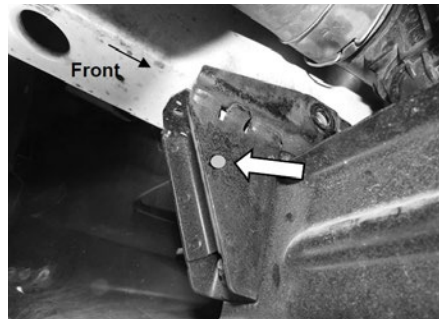
It is not necessary to remove the center brackets.

Step 8

Use a 1/2" drill bit to drill out the marked locations.

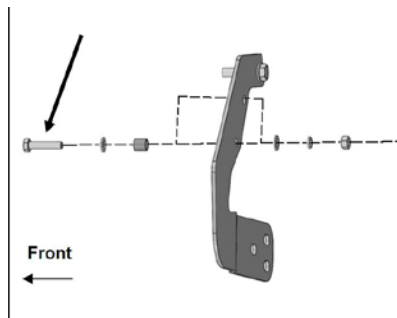
NOTICE

To make drilling easier and more accurate, start by using an 1/8" drill bit, followed by the 1/2" drill bit.



Step 9

Reattach the top of the frame brackets to the frame. Use the two M10 x 40 hex bolts, four M10 flat washers, two 12mm tube spacers, two M10 lock washers and two M10 hex nuts to secure the frame brackets to the frame.



Step 10

Reinstall the grille guard as instructed in steps 3 through 5. Align the guard and tighten all hardware.