

Level of Difficulty

Easy

Installation difficulty levels are based on time and effort involved and may vary depending on the installer level of expertise, condition of the vehicle and proper tools and equipment.

Parts List

Item	Qty	Description
1	1	Upright, driver / left side
2	1	Upright, passenger / right side
3	1	Mounting bracket, driver / left side
4	1	Mounting bracket, passenger / right side
5	1	Adjustable mounting bracket, driver / left side
6	1	Adjustable mounting bracket, passenger / right side
7	2	Channel bracket, universal
8	1	Grille guard
9	1	Magnet kit
10	4	Carriage bolt, 1/2"-13 x 1-1/2"
11	6	Hex bolt, 5/8"-11 x 1-3/4"
12	4	Hex bolt, 7/16"-14 x 1-1/4"
13	2	Shoulder bolt, 5/8" x 7/8" x 1/2"-13
14	4	Flange nut, 5/8"-11
15	2	Nylock nut, 5/8"-11
16	6	Nylock nut, 1/2"-13
17	4	Belleville washer, .63" x 1.25" x .04" x .082"
18	4	Flat washer, 7/16"
19	8	Flat washer, 9/16"
20	2	Flat washer, 5/8"

Tools Required

Ratchet	Torque wrench
Socket, 21mm	Allen wrench, 5/16"
Socket, 24mm	Wrench, 3/4"
Socket, 5/8"	Wrench, 15/16" (x2)
Socket extension	Impact driver (optional)

Product Photo



NOTICE

Visit www.luvernetruck.com for a full-color copy of this instruction manual, as well as helpful videos, guides and much more!

Before you begin installation, read all instructions thoroughly.

Proper tools will improve the quality of installation and reduce the time required.

Periodic inspection of your product should be performed to ensure all hardware and / or components remain secure.

To help prevent damage to the product or vehicle, refer to the specified torque specifications when securing hardware during the installation process.

Maintenance

Mild automotive detergent may be used to clean the product. Do not use dish detergent, abrasive cleaners, abrasive pads, wire brushes or other similar products that may damage the finish.

Product Registration and Warranty

LUVERNE stands behind our products with industry-leading warranties. To get copies of the product warranties, register your purchase or provide feedback, visit: warranty.curtgroup.com/surveys

Torque Specifications

7/16" bolt	30 ft.-lbs.
1/2" bolt	65 ft.-lbs.
5/8" bolt	128 ft.-lbs.
M16 bolt	140 ft.-lbs.

Use above torque setting unless otherwise noted

Step 1

Remove the driver-side tow hook bolts using a 21mm socket and 24mm socket. **Note:** An impact driver and socket extension on the 21mm bolt head is recommended for easier removal.

Install the driver-side mounting bracket and tow hook using the factory hardware. Repeat on the passenger side of the vehicle. Verify the brackets are even and stick out from the bumper the same amount before torquing hardware.



Step 2

Lay the uprights on a flat surface with the bottom rounded corner of the upright to the middle. Set the grille guard ring in place and insert four 7/16"-14 x 1-1/4" hex bolts and 7/16" washers to secure the ring to the uprights. Use a 5/8" socket to tighten.



Step 3

Place a channel bracket inside the upright. Secure to the upright with two carriage bolts, washers and nylock nuts. Use a 3/4" wrench to tighten but do not fully tighten at this time.



Step 4

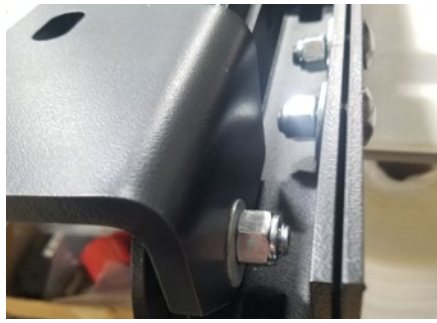
Insert a shoulder bolt through the pivot hole in the upright and channel bracket. Place a belleville washer on the shoulder bolt with the small diameter touching the channel bracket.



Step 5

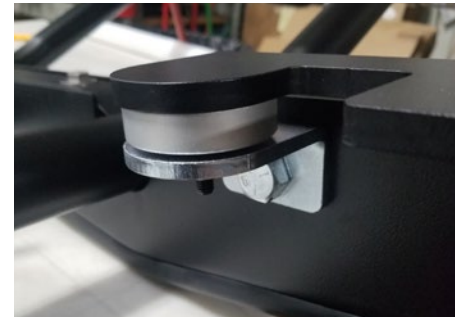
Place a pivot bracket on the shoulder bolt. The magnet and bolt flange will go to the inside of the uprights. Place the 2nd belleville washer on the shoulder bolt with the large diameter towards the pivot bracket, followed by a 1/2" nylock nut.

Tighten with a 5/16" allen wrench and 3/4" wrench.



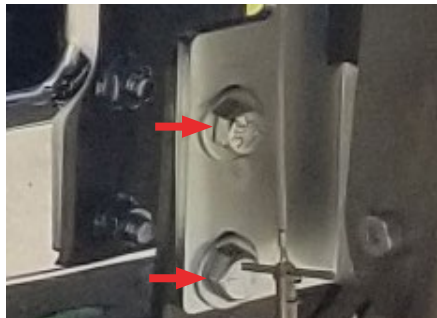
Step 6

Attach the magnet to the top hole with a 5/8-11 x 1-3/4" bolt, large diameter washer, and 5/8" nylock nut. The safety pin magnet bracket will go on the driver side. Do not fully tighten the hardware.



Step 7

Use 5/8"-11 x 1-3/4" bolts, flat washer and 5/8" serrated flange nuts to secure the pivot brackets to the mounting brackets. Adjust and center as needed before tightening.



Step 8

Adjust the magnet and guard angle to preferred location, then tighten the magnet bolts. Snug the channel bracket carriage bolts, but do not over tighten as it will make the guard harder to open and close.

TROUBLESHOOTING

Issue

Guard not opening / closing easily.

Solution

Check to make sure the pivot brackets are parallel with the uprights. If brackets are parallel, loosen carriage bolts in the channel bracket in small increments until guard moves easier.