

LIVERNE

TRUCK EQUIPMENT

205920

FORD TRANSIT VAN 2014-CURRENT

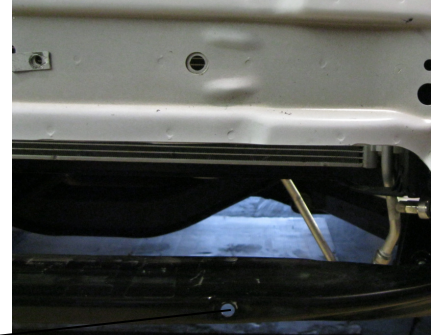
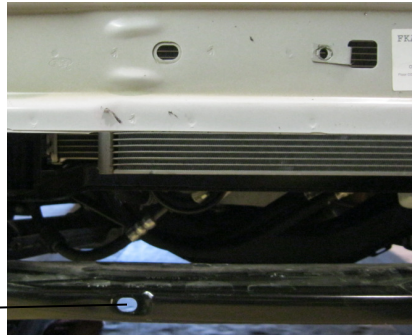
INSTALLATION INSTRUCTIONS

READ THE INSTRUCTIONS COMPLETELY AND CHECK TO MAKE SURE THAT ALL OF THE REQUIRED PARTS ARE ON HAND BEFORE STARTING THE INSTALLATION.

1. REMOVE THE LOWER AIR DAM.



2. LOCATE THE TWO HOLES IN THE LOWER CROSS BRACE AS SHOWN IN *fig. 3*. FROM THE BACKSIDE, USING THE CENTER OF THE CROSSBRACE HOLES AS A GUIDE, DRILL A 1/4" DIAMETER HOLE THROUGH THE PLASTIC BUMPER COVER. (BUMPER COVER REMOVED FOR CLARIFICATION).



3. FROM THE FRONT SIDE, USING THE 1/4" HOLES AS A GUIDE, DRILL 1" DIAMETER HOLES WITH A 1" HOLE SAW.



4. INSTALL THE BRACKET (ITEM #2) THROUGH THE BOTTOM HOLES USING THE TWO 7/16"-14 X 3-1/4" HEX SCREWS (ITEM #7), 7/16"-14 SERRATED FLANGE NUTS (ITEM #12) AND THE 3/4" X 2-7/16" SPACERS (ITEM #5). SNUG UP BOLTS TO HOLD THE MOUNTING BRACKET IN POSITION.

LIVERNE

TRUCK EQUIPMENT

5. MARK THE TOP HOLES IN THE PLASTIC BUMPER COVER THROUGH THE HOLES IN THE MOUNTING BRACKET. (A **SHARPIE PEN WORKS VERY WELL**) KEEP THE MARKING DEVICE PERPENDICULAR TO THE EMBOSSED SURFACE AROUND THE HOLE WHICH MAKES IT ANGLED IN AT ABOUT 3-1/2 DEGREES.
6. REMOVE THE MOUNTING BRACKET AND DRILL TWO 1" DIAMETER HOLES THROUGH THE PLASTIC BUMPER COVER. CLEAN UP THE EDGES OF THE FOUR HOLES IF REQUIRED.

7. INSTALL THE MOUNTING BRACKET (ITEM #2) USING THE TWO 7/16"-14 X 2-1/2" HEX SCREWS (ITEM #8), 7/16"-14 SERRATED FLANGE NUTS (ITEM #12) AND THE 3/4" X 1-11/16" SPACERS (ITEM #4) IN THE TOP HOLES AND THE TWO 7/16-14 X 3-1/4" HEX SCREWS (ITEM #7), 7/16"-14 SERRATED FLANGE NUTS (ITEM #12) AND THE 3/4" X 2-7/16" SPACERS (ITEM #5) IN THE BOTTOM HOLES. FASTEN THROUGH THE FORWARD FACING HOLES IN THE BRACKET.



8. TIGHTEN THE BOLTS FASTENING THE MOUNTING BRACKET TO THE VEHICLE AND INSTALL THE PLASTIC BOLT COVERS (ITEM #17) ON THE HEADS OF THE FOUR MOUNTING BOLTS.
9. BEFORE YOU MOUNT THE TUFF GUARD INTO PLACE, DEPENDING ON YOUR STATE, THERE IS AN OPTIONAL LICENSE PLATE BRACKET (ITEM #3) THAT WILL NEED TO BE INSTALLED ON ONE OF THE TUBES, USING THE TWO SELF DRILLING SCREWS (ITEM #10).
10. FASTEN THE TUFF GUARD TO THE BRACKET INSTALLED ON THE TRUCK USING THE FOUR 1/2"-13 X 1-1/4" CARRIAGE BOLTS (ITEM #6), 1/2" LOCK WASHERS (ITEM #14), 1/2" FLAT WASHERS (ITEM #15) AND 1/2"-13 ACORN NUTS (ITEM #11). SNUG UP THE NUTS.
11. TIGHTEN THE BOLTS FASTENING THE GRILLE GUARD TO THE MOUNTING BRACKET.
12. REINSTALL THE LOWER AIR DAM.



SERVICE PARTS LIST

ITEM	PART NO.	QTY	DESCRIPTION
1	205530	1	GUARD-TUBULAR, 3" BLACK
2	205921	1	MOUNTING BRACKET - BLACK
3	205865	1	LICENSE PLATE BRACKET
4	109721	2	MOUNTING BRACKET SPACER - TOP
5	109722	2	MOUNTING BRACKET SPACER - BOTTOM
6	109515	4	BOLT-CARRIAGE, 1/2"-13 X 1-1/4", BZP
7	100073	2	SCREW-HEX HEAD, 7/16"-14 X 3-1/2", ZP
8	100074	2	SCREW-HEX HEAD, 7/16"-14 X 2-1/2", ZP
9	108023	4	SCREW-SELF TAPPING, 1/4"-20 X 1/2", ZP
10	103778	2	SCREW-DRILL, 1/4" X 3/4", ZP , STL
11	109510	4	NUT-ACORN, 1/2"-13, BLACK ZP
12	103737	4	NUT-HEX FLANGE, 7/16"-14, ZP
13	100170	4	NUT-PLASTIC EXPANDING, 1/4", WHITE
14	109511	4	WASHER-LOCK, 1/2", BLACK ZP
15	100940	4	WASHER-FLAT, SAE, 1/2", BLACK ZP
16	102500	4	TUBE INSERT - 3"
17	108563	4	NUT CAP - 7/16", BLACK, NC 191
18	100252	1	SERIAL NUMBER DECAL

SERVICE PARTS DRAWING

MODEL NO. - 205920

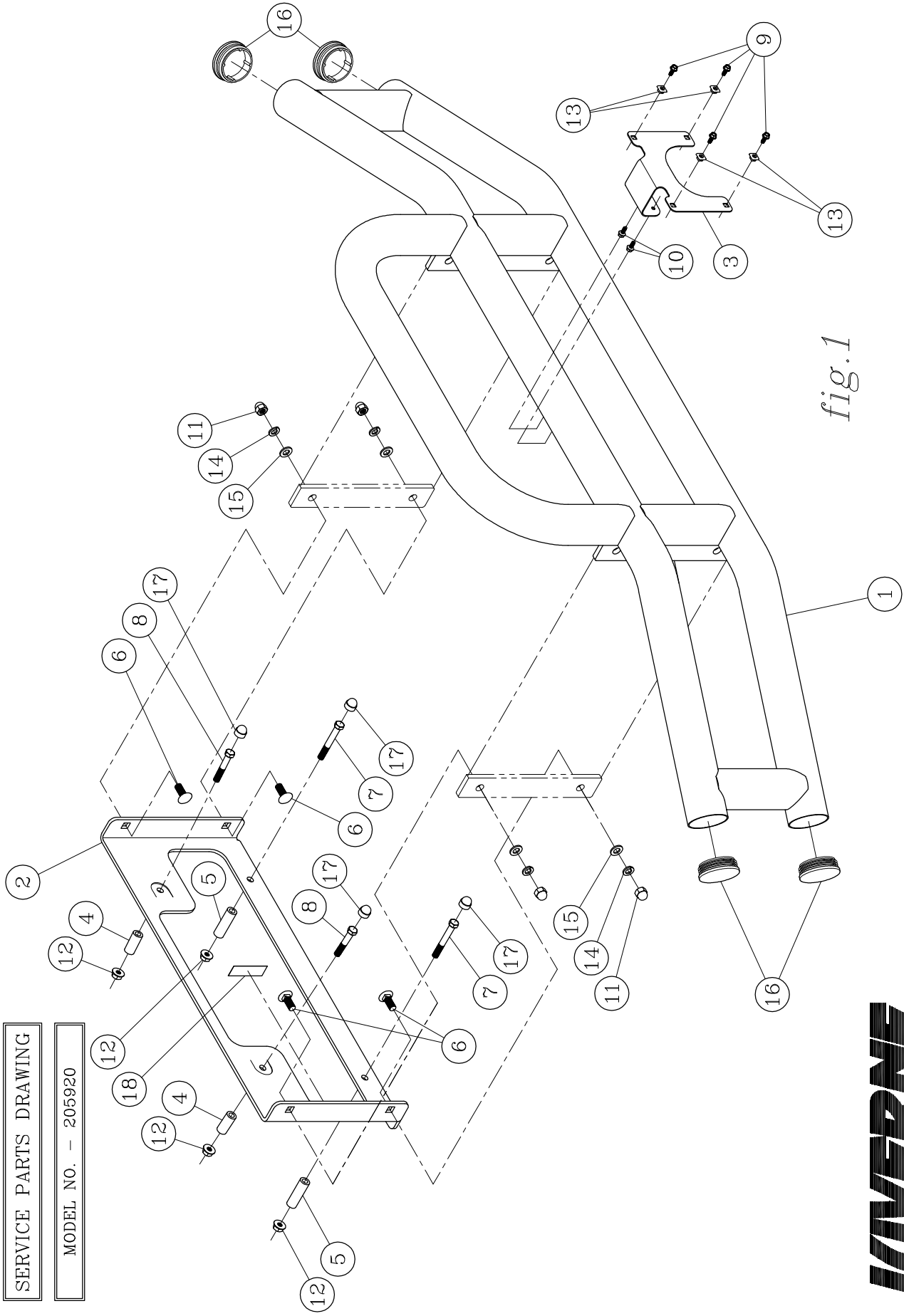


fig.1

